

DRAWING LIST

GENERAL DRAWINGS

Table with 2 columns: Drawing ID, Description. Includes B124-10-01 COVER SHEET, B124-10-02 DRAWING LIST, DESIGN DATA AND ABBREVIATIONS, B124-10-03 EXISTING GENERAL ARRANGEMENT, B124-10-04 GENERAL ARRANGEMENT

SUBSTRUCTURES - PIER MODIFICATIONS

Table with 2 columns: Drawing ID, Description. Includes B124-10-05 SHORING SCHEME FOR BEARING REPLACEMENT, B124-10-06 BEARING REPLACEMENT DETAILS, B124-10-07 PIER CORROSION PROTECTION

DECK REHABILITATION & MODIFICATIONS

Table with 2 columns: Drawing ID, Description. Includes B124-10-08 DECK CONCRETE & REINFORCING DETAILS, B124-10-09 DECK EXTENSION CONCRETE & REINFORCING DETAILS, B124-10-10 FINAL PAVEMENT ELEVATIONS FOR DECK

BARRIERS, APPROACH SLABS AND GUARDRAILS

Table with 2 columns: Drawing ID, Description. Includes B124-10-11 CONCRETE BARRIERS LAYOUT & REINFORCING DETAILS I, B124-10-12 CONCRETE BARRIERS REINFORCING DETAILS II, B124-10-13 ALUMINUM TRAFFIC BARRIER RAIL LAYOUT & DETAILS I, B124-10-14 ALUMINUM TRAFFIC BARRIER RAIL DETAILS II, B124-10-15 APPROACH SLABS CONCRETE AND REINFORCING DETAILS I, B124-10-16 APPROACH SLABS CONCRETE AND REINFORCING DETAILS II

REINFORCED CONCRETE PAVEMENT AND EXPANSION JOINTS

Table with 2 columns: Drawing ID, Description. Includes B124-10-17 MSE WALL LAYOUT AND DETAILS & REINFORCED CONCRETE PAVEMENT LAYOUT, B124-10-18 REINFORCED CONCRETE PAVEMENT & EXPANSION JOINT DETAILS, B124-10-19 EXPANSION JOINT DETAILS I, B124-10-20 EXPANSION JOINT DETAILS II, B124-10-21 REINFORCED CONCRETE PAVEMENT LAYOUTS I, B124-10-22 REINFORCED CONCRETE PAVEMENT LAYOUTS II, B124-10-23 REINFORCED CONCRETE PAVEMENT LAYOUTS III, B124-10-24 REINFORCED CONCRETE PAVEMENT LAYOUTS IV, B124-10-25 REINFORCING SCHEDULE I, B124-10-26 REINFORCING SCHEDULE II, B124-10-27 REINFORCING SCHEDULE III, B124-10-28 REINFORCING SCHEDULE IV

ROADWORKS

Table with 2 columns: Drawing ID, Description. Includes B124-10-29 RAMP CONSTRUCTION STAGING, B124-10-30 REMOVALS 1 OF 3, B124-10-31 REMOVALS 2 OF 3, B124-10-32 REMOVALS 3 OF 3, B124-10-33 HORIZONTAL ROADWAY GEOMETRY 1 OF 3, B124-10-34 HORIZONTAL ROADWAY GEOMETRY 2 OF 3, B124-10-35 HORIZONTAL ROADWAY GEOMETRY 3 OF 3, B124-10-36 PAVEMENT ELEVATIONS 1 OF 3, B124-10-37 PAVEMENT ELEVATIONS 2 OF 3, B124-10-38 PAVEMENT ELEVATIONS 3 OF 3, B124-10-39 JUBILEE AVENUE RAMP PROFILE 1 OF 2, B124-10-40 JUBILEE AVENUE RAMP PROFILE 2 OF 2, B124-10-41 PEMBINA HIGHWAY RAMP PROFILE 1 OF 2, B124-10-42 PEMBINA HIGHWAY RAMP PROFILE 2 OF 2, B124-10-43 PAVING AND GRADING 1 OF 3, B124-10-44 PAVING AND GRADING 2 OF 3, B124-10-45 PAVING AND GRADING 3 OF 3, B124-10-46 PAVEMENT SECTIONS, B124-10-47 OVERHEAD SIGN S-678 PLAN & DETAILS, B124-10-48 ALUMINUM BALANCED BARRIER LOCATIONS 1 OF 2, B124-10-49 ALUMINUM BALANCED BARRIER LOCATIONS 2 OF 2, B124-10-50 JUBILEE AVENUE PLAN/PROFILE SHEET 1 OF 2, B124-10-51 JUBILEE AVENUE PLAN/PROFILE SHEET 2 OF 2

DESIGN DATA

DESIGN SPECIFICATIONS

LIVE LOADING

CANADIAN HIGHWAY BRIDGE DESIGN CODE
CAN / CSA - S6 - 06

CONCRETE

CHBDC CL-625

REINFORCING STEEL

f_c = 35 MPa HPC OVERLAY CSA CLASS OF EXPOSURE C-XL
f_c = 35 MPa SUPERSTRUCTURE (DECK REPLACEMENT) CSA CLASS OF EXPOSURE C-1
f_c = 35 MPa SUBSTRUCTURE CSA CLASS OF EXPOSURE C-1

FOR FRAFFIC BARRIERS ON ON BRIDGE DECK, DECK EXTENSIONS, AND WING-WALLS.
• STAINLESS STEEL TO ASTM A955M GRADE 60[420] 2205 DUPLEX (UNS S31803)
OR 316LN (UNS 31653)

FOR APPROACH SLABS, TRAFFIC BARRIERS ON APPROACH SLABS, MEDIANS ON APPROACH SLABS, REINFORCED CONCRETE PAVEMENTS, AND TRAFFIC BARRIERS ON REINFORCED CONCRETE PAVEMENTS ALONG MSE RETAINING WALL, OVERHEAD SIGN PILE FOUNDATION
• MMFX-II REINFORCING STEEL BARS BY MMFX STEEL CORPORATION OR
• LOW CARBON, CHROMIUM (CORROSION-RESISTANT UNCOATED STEEL) BARS WITH A MINIMUM OF 8% BY WEIGHT CHROMIUM, MEETING ALL THE REQUIREMENT OF ASTM A615 GRADE 75 AND ASTM A 1035-04

FOR OTHER STRUCTURAL ELEMENTS NOT NOTED ABOVE
• REINFORCING STEEL BARS TO CAN/CSA G30.18-M92, GRADE 400W

GLASS FIBRE

REINFORCED POLYMER (GFRP) ASLAN 100 FIBREGLASS REBAR OR APPROVED EQUAL FOR DECK IN ACCORDANCE WITH B6

COVER TO REINFORCING STEEL/GFRP:

70mm (TO TOP OF HPC OVERLAY)
20mm
38mm (EXISTING)
60mm
60mm

ALUMINUM BRIDGE PEDESTRIAN RAILS AND POSTS

ASTM B221-M83 ALLOY 6061-T6 OR ALLOY 6351-T6

ROADWAY GEOMETRY

CONFORMS TO REQUIREMENTS OF THE LATEST CITY OF WINNIPEG STREETS AND TRANSPORTATION STANDARD MANUAL AND 1999 TRANSPORTATION ASSOCIATION OF CANADA GEOMETRIC DESIGN GUIDE

DESIGN NOTES

ALL DIMENSIONS SHOWN ON THESE DRAWINGS ARE BASED ON AVAILABLE INFORMATION. THE CONTRACTOR SHALL FIELD MEASURE AND VERIFY ALL DIMENSIONS PRIOR TO COMMENCING CONSTRUCTION, OR PRIOR TO PREPERATION OF SHOP DRAWINGS, AND SHALL MAKE APPROPRIATE ADJUSTMENTS TO THE APPLICABLE DETAILS AND DIMENSIONS ACCEPTABLE TO THE CONTRACT ADMINISTRATOR. THE CONTRACTOR SHALL THEN FABRICATE AND CONSTRUCT THE WORKS IN ACCORDANCE WITH THE CORRECTED DIMENSIONS, INCIDENTAL TO THE WORKS AND AT NO ADDITIONAL COST.

LIST OF ABBREVIATIONS

Table with 4 columns: Abbreviation, Full Name, Abbreviation, Full Name. Includes ABUT, APPROX, @, AL, ALT, &, B TO B, BC, BOT, BRG, BRKT, CL, CL, C TO C, CLR, CONC, CTR, C/W, DBA, Ø, DL, I.F., INSIDE FACE, INT, INTERMEDIATE, J, EXPANSION JOINT GAP, LL, LIVE LOAD, LG, LONG, LLH, LONG LEG HORIZONTAL, MAX, MAXIMUM, MID, MIDDLE, MIG, METAL INERT GAS, MIN, MINIMUM, N, NORTH, NF, NEAR FACE, NO, NUMBER, NTS, NOT TO SCALE, OC, ON CENTRE, OD, OUTSIDE DIAMETER, O.F., OUTSIDE FACE, OPT, OPTIONAL, OSL, OUTSTANDING LEG, PCS, PIECES, PERP, PERPENDICULAR, PL, PLATE, PT, POST TENSIONING, PTFE, POLYTETRAFLUORETHYLENE, PREP, PREPARATION, PROP, PROPOSED, R, RADIUS, RAD, RADIAL, RDWY, ROADWAY, REQ, REQUIRED, S, SOUTH, SPS, SPACES, SS, STAINLESS STEEL, STD, STANDARD, SU, SUBSTRUCTURE UNIT, T, TOP, T&B, TOP & BOTTOM, T.O., TOP OF, TYP, TYPICAL, U/N, UNLESS NOTED, UNO, UNLESS NOTED OTHERWISE, U/S, UNDER SIDE, VERT, VERTICAL, W, WEST

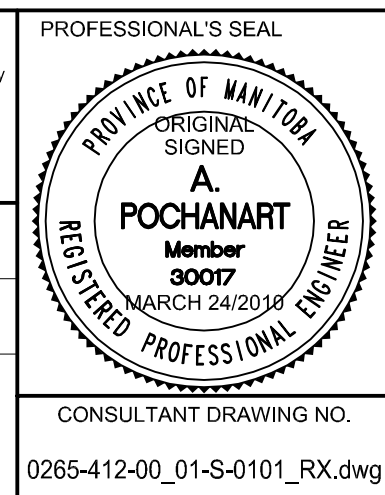
METRIC
WHOLE NUMBERS INDICATE MILLIMETRES
DECIMALIZED NUMBERS INDICATE METRES



BID OPPORTUNITY NO. 133-2010

Table with 2 columns: Location Approved, Date. Includes SUPR. U/G STRUCTURES COMMITTEE, NOTE: LOCATION OF UNDERGROUND STRUCTURES AS SHOWN ARE BASED ON THE BEST INFORMATION AVAILABLE. BUT NO GUARANTEE IS GIVEN THAT ALL EXISTING UTILITIES ARE SHOWN OR THAT THE GIVEN LOCATIONS ARE EXACT. CONFIRMATION OF EXISTENCE AND EXACT LOCATION OF ALL SERVICES MUST BE OBTAINED FROM THE INDIVIDUAL UTILITIES BEFORE PROCEEDING WITH CONSTRUCTION.

Table with 2 columns: DESIGNED BY, CHECKED BY, DRAWN BY, APPROVED BY, HOR. SCALE, VERT. SCALE, DATE. Includes AP, SBB / CGC, DJH, DJH, AS NOTED, AS NOTED, YYMMDD



THE CITY OF WINNIPEG PUBLIC WORKS DEPARTMENT ENGINEERING DIVISION
JUBILEE AVENUE OVERPASS REHABILITATION
DRAWING LIST, DESIGN DATA & ABBREVIATIONS
CITY DRAWING NUMBER B124-10-02
SHEET 02 OF 51
DRAWING No. 02 REV 0