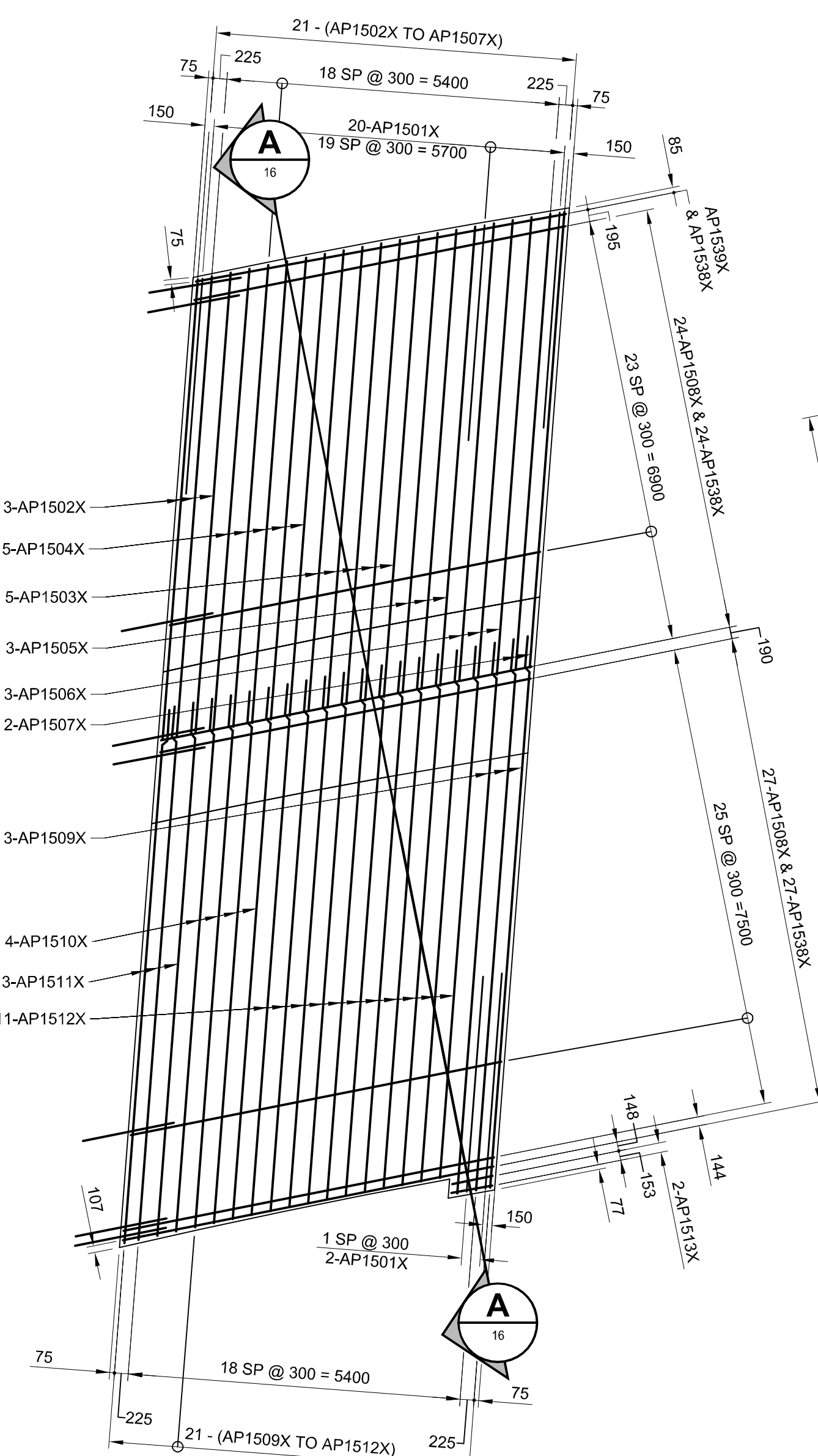
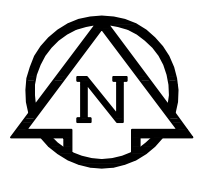
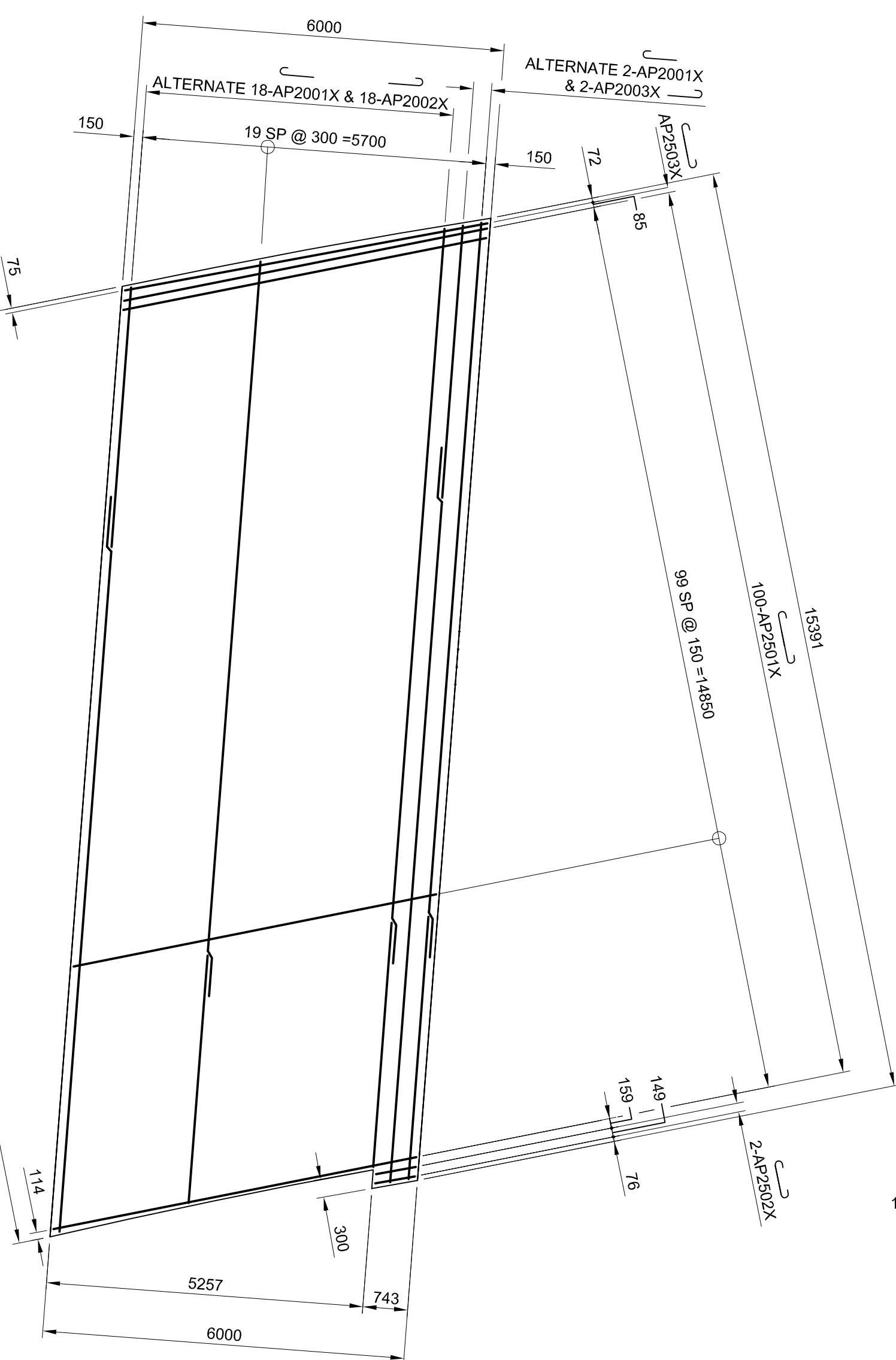


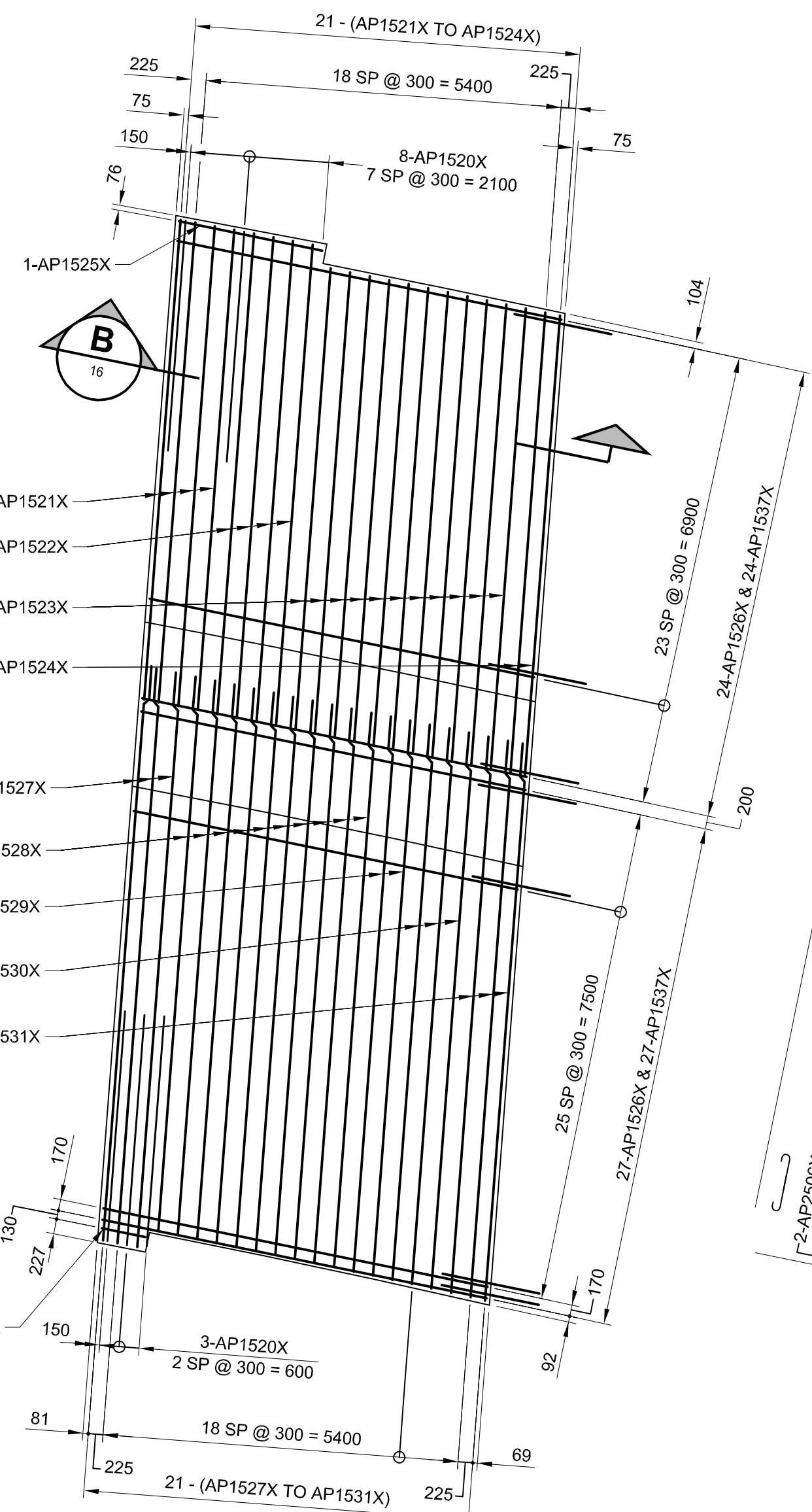
A1 SIZE 23.4" x 33.1" (594mm x 841mm) PLOT: 10/03/24 11:04:17 AM AECOM FILE NAME: 0265-412-00_01-S-0721_RX.dwg Saved By: crossmanc



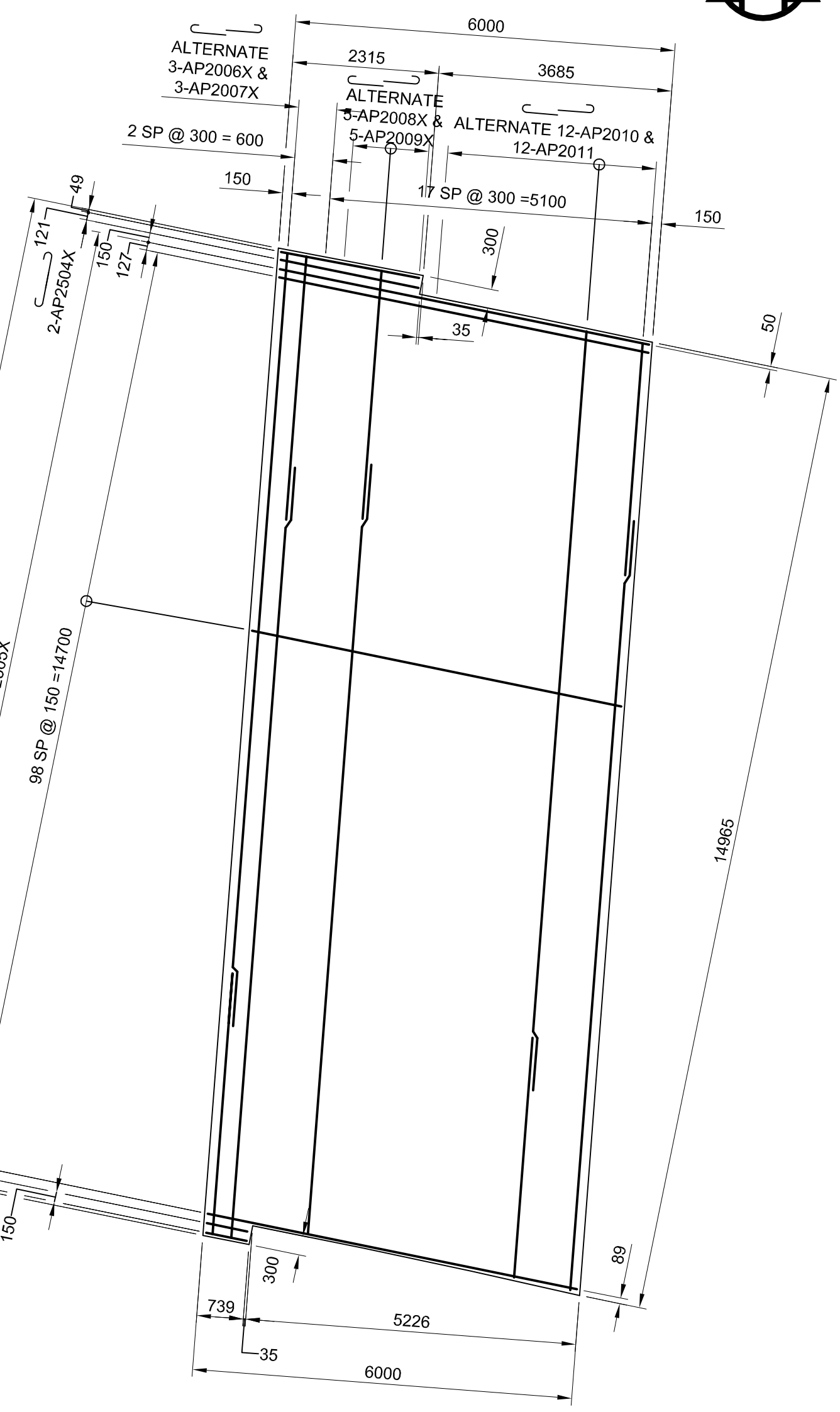
PLAN
mm SCALE 1:75
WEST APPROACH SLAB
TOP MAT REINFORCING DETAILS



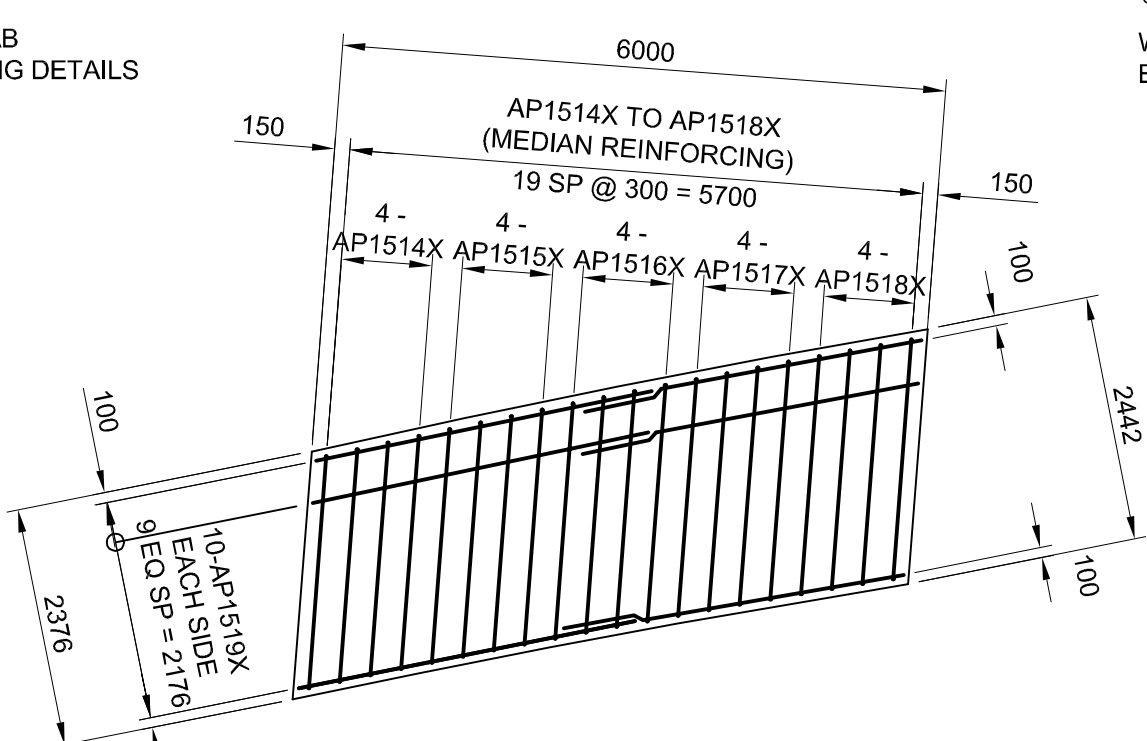
PLAN
mm SCALE 1:75
WEST APPROACH SLAB
BOTTOM MAT REINFORCING DETAILS



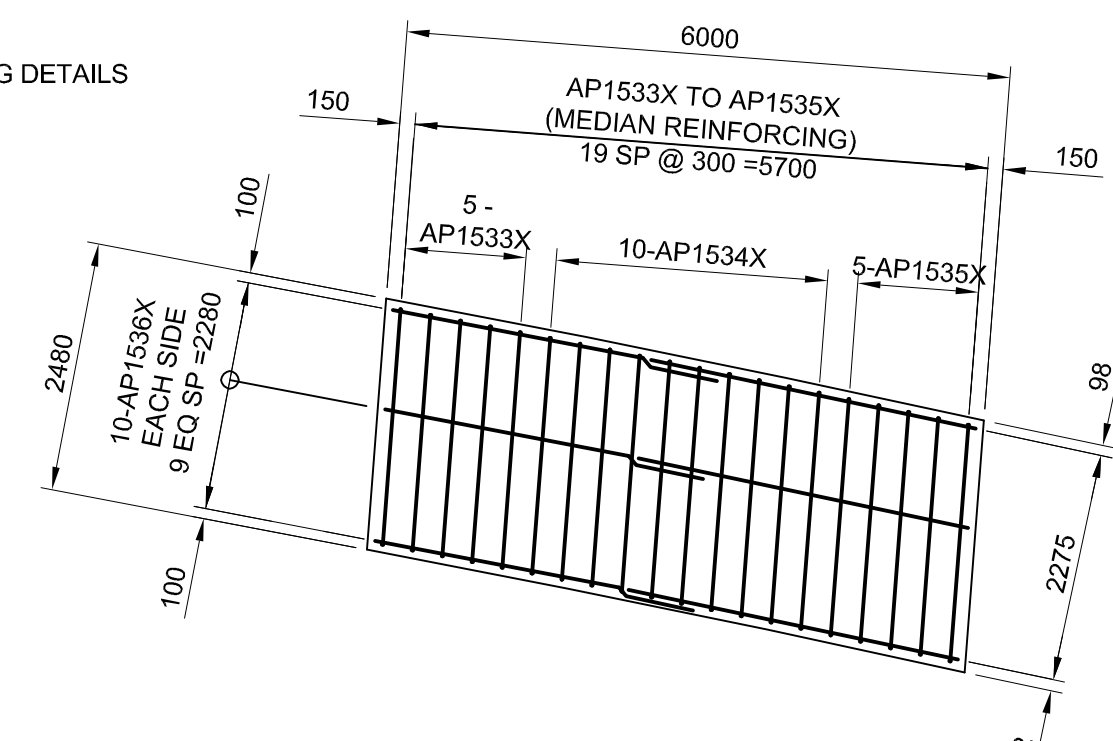
PLAN
mm SCALE 1:75
EAST APPROACH SLAB
TOP MAT REINFORCING DETAILS



PLAN
mm SCALE 1:75
EAST APPROACH SLAB
BOTTOM MAT REINFORCING DETAILS



PLAN
mm SCALE 1:75
WEST APPROACH SLAB
MEDIAN REINFORCING DETAILS



PLAN
mm SCALE 1:75
EAST APPROACH SLAB
MEDIAN REINFORCING DETAILS

METRIC
WHOLE NUMBERS INDICATE MILLIMETRES
DECIMALIZED NUMBERS INDICATE METRES

LOCATION APPROVED UNDERGROUND STRUCTURES		BM 00-000 ELEV 200.000m
SUPR. U/G STRUCTURES COMMITTEE	DATE	
NOTE: LOCATION OF UNDERGROUND STRUCTURES AS SHOWN ARE BASED ON THE BEST INFORMATION AVAILABLE. BUT NO GUARANTEE IS GIVEN THAT ALL EXISTING UTILITIES ARE SHOWN OR THAT THE GIVEN LOCATIONS ARE EXACT. CONFIRMATION OF EXISTENCE AND EXACT LOCATION OF ALL SERVICES MUST BE OBTAINED FROM THE INDIVIDUAL UTILITIES BEFORE PROCEEDING WITH CONSTRUCTION.		
NO.	REVISIONS	BY
0	ISSUED FOR CONSTRUCTION	10/03/24 CPK
B	ISSUED FOR 100% REVIEW	10/03/08 DJH
A	ISSUED FOR 30% REVIEW	10/01/28 DJH

AECOM		This drawing has been prepared for the use of AECOM's client and may not be used, reproduced or relied upon by third parties, except as agreed by AECOM and its client, as required by law or for use by governmental reviewing agencies. AECOM accepts no responsibility, and denies any liability whatsoever, to any party that modifies this drawing without AECOM's express written consent. Do not scale this document. All measurements must be obtained from stated dimensions.	
DESIGNED BY	AP	CHECKED BY	SBB / CGC
DRAWN BY	DJH	APPROVED BY	
HOR. SCALE	AS NOTED	RELEASED FOR CONSTRUCTION	
VERT. SCALE	AS NOTED		
DATE	YYMMDD	DATE	

AECOM
Certificate of Authorization
AECOM Canada Ltd.
Original dated on:
No. 4671 Date: 2010/03/24

PROFESSIONAL'S SEAL
PROVINCE OF MANITOBA
ORIGINAL SIGNED
A. POCHANART
Member
9007
MARCH 24/2015
REGISTERED PROFESSIONAL ENGINEER
CONSULTANT DRAWING NO.
0265-412-00_01-S-0721_RX.dwg

THE CITY OF WINNIPEG
PUBLIC WORKS DEPARTMENT
ENGINEERING DIVISION

JUBILEE AVENUE OVERPASS REHABILITATION

APPROACH SLABS CONCRETE & REINFORCING DETAILS I

CITY DRAWING NUMBER: B124-10-15
SHEET 15 OF 51
DRAWING No. 15
REV 0

BID OPPORTUNITY NO. 133-2010