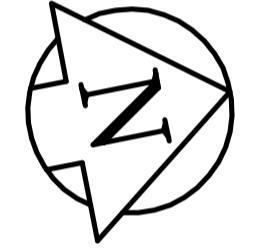
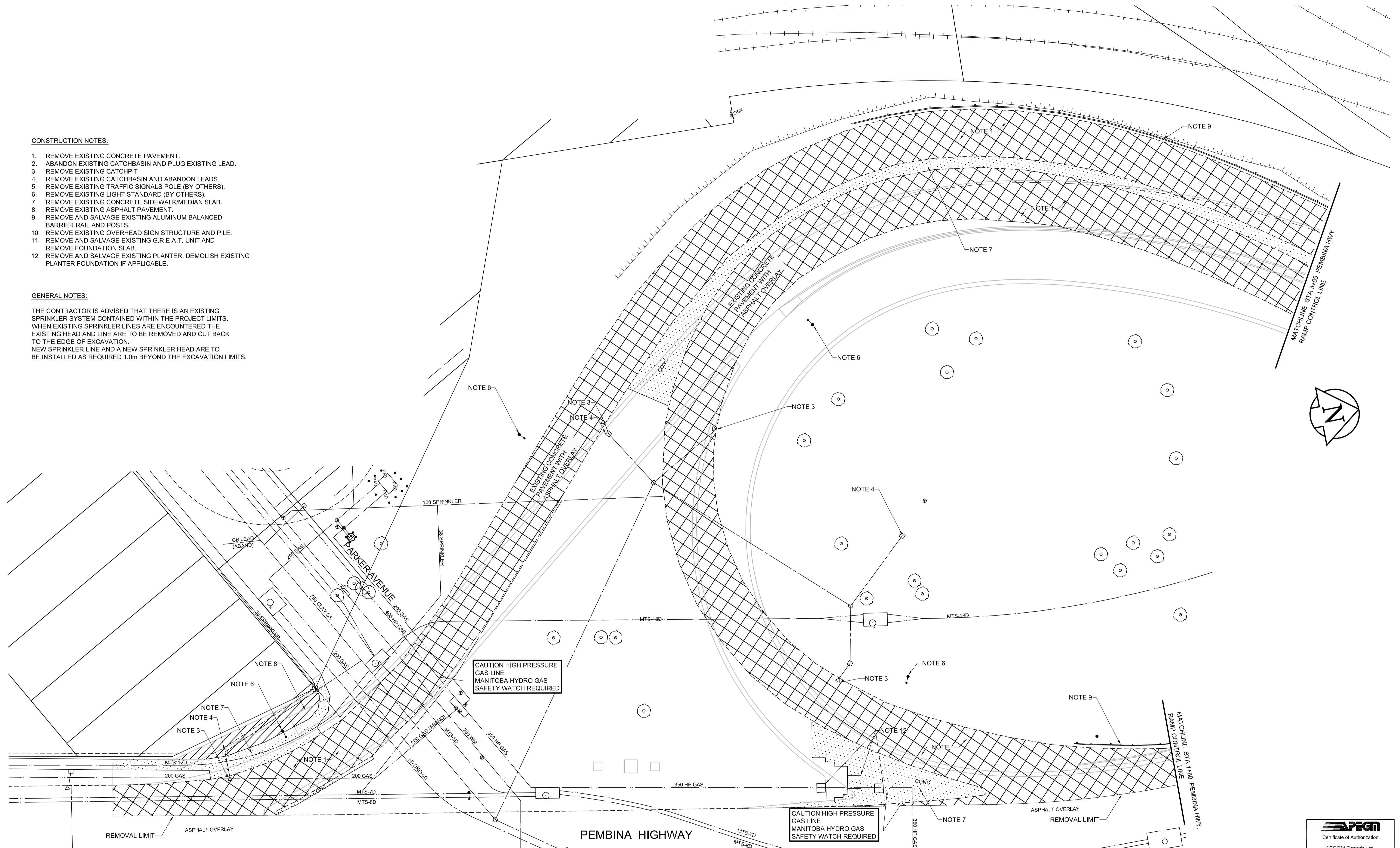


CONSTRUCTION NOTES:

1. REMOVE EXISTING CONCRETE PAVEMENT.
2. ABANDON EXISTING CATCHBASIN AND PLUG EXISTING LEAD.
3. REMOVE EXISTING CATCHPIT
4. REMOVE EXISTING CATCHBASIN AND ABANDON LEADS.
5. REMOVE EXISTING TRAFFIC SIGNALS POLE (BY OTHERS).
6. REMOVE EXISTING LIGHT STANDARD (BY OTHERS).
7. REMOVE EXISTING CONCRETE SIDEWALK/MEDIAN SLAB.
8. REMOVE EXISTING ASPHALT PAVEMENT.
9. REMOVE AND SALVAGE EXISTING ALUMINUM BALANCED BARRIER RAIL AND POSTS.
10. REMOVE EXISTING OVERHEAD SIGN STRUCTURE AND PILE.
11. REMOVE AND SALVAGE EXISTING G.R.E.A.T. UNIT AND REMOVE FOUNDATION SLAB.
12. REMOVE AND SALVAGE EXISTING PLANTER, DEMOLISH EXISTING PLANTER FOUNDATION IF APPLICABLE.

GENERAL NOTES:

THE CONTRACTOR IS ADVISED THAT THERE IS AN EXISTING SPRINKLER SYSTEM CONTAINED WITHIN THE PROJECT LIMITS. WHEN EXISTING SPRINKLER LINES ARE ENCOUNTERED THE EXISTING HEAD AND LINE ARE TO BE REMOVED AND CUT BACK TO THE EDGE OF EXCAVATION. NEW SPRINKLER LINE AND A NEW SPRINKLER HEAD ARE TO BE INSTALLED AS REQUIRED 1.0m BEYOND THE EXCAVATION LIMITS.



METRIC
WHOLE NUMBERS INDICATE MILLIMETRES
DECIMALIZED NUMBERS INDICATE METRES



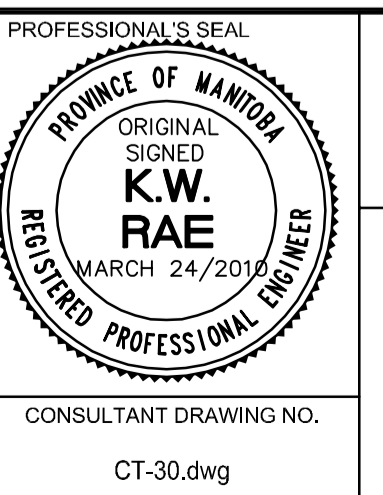
BID OPPORTUNITY NO. 133-2010

	GAS		MANHOLE
	MTS		CATCH BASIN / CATCH PIT
	HYDRO		CURB INLET WITH BOX
	CATV/FO		TREE
	TRAFFIC SIGNALS/PIT		TEST HOLE
	LAND DRAINAGE SEWER		PROPERTY LINE
	SANITARY/COMBINED SEWER		SURVEY BAR
	SSP/DCP		FENCE
	WATERMAIN		BOC/EOPAVT
	SUBDRAIN		ELEVATION
	DITCH		TRAFFIC SIGN
	EXISTING		NEW

	CONCRETE PAVEMENT REMOVAL
	CONC. SIDEWALK/MEDIAN REMOVAL
	ASPHALT PAVEMENT PLANNING/REMOVAL
	LOCATION APPROVED
	UNDERGROUND STRUCTURES

NOTE:
LOCATION OF UNDERGROUND STRUCTURES AS SHOWN ARE BASED ON THE BEST INFORMATION AVAILABLE. BUT NO GUARANTEE IS GIVEN THAT ALL EXISTING UTILITIES ARE SHOWN OR THAT THE GIVEN LOCATIONS ARE EXACT. CONFIRMATION OF EXISTENCE AND EXACT LOCATION OF ALL SERVICES MUST BE OBTAINED FROM THE INDIVIDUAL UTILITIES BEFORE PROCEEDING WITH CONSTRUCTION.

DESIGNED BY	KWR	CHECKED BY	WRJ
DRAWN BY	BC	APPROVED BY	
HOR. SCALE	1:250	RELEASED FOR CONSTRUCTION	
VERT. SCALE	N/A	DATE	



THE CITY OF WINNIPEG
PUBLIC WORKS DEPARTMENT
ENGINEERING DIVISION

JUBILEE AVENUE OVERPASS ASSOCIATED ROADWORKS
REMOVALS
SHEET 1 OF 3

CITY DRAWING NUMBER: B124-10-30
SHEET 30 OF 51
DRAWING No. 30
REV 0