

CAUTION HIGH PRESSURE GAS LINE. MANITOBA HYDRO GAS. SAFETY WATCH REQUIRED

- CONSTRUCTION NOTES:**
1. REMOVE EXISTING CONCRETE PAVEMENT.
  2. ABANDON EXISTING CATCHBASIN AND PLUG EXISTING LEAD.
  3. REMOVE EXISTING DRAINAGE INLET
  4. REMOVE EXISTING CATCHBASIN AND ABANDON LEADS.
  5. REMOVE EXISTING TRAFFIC SIGNALS POLE (BY OTHERS).
  6. REMOVE EXISTING LIGHT STANDARD (BY OTHERS).
  7. REMOVE EXISTING CONCRETE SIDEWALK/MEDIAN SLAB.
  8. REMOVE EXISTING ASPHALT PAVEMENT.
  9. REMOVE AND SALVAGE EXISTING ALUMINUM BALANCED BARRIER RAIL AND POSTS.
  10. REMOVE EXISTING OVERHEAD SIGN STRUCTURE AND PILE.
  11. REMOVE AND SALVAGE EXISTING G.R.E.A.T. UNIT AND REMOVE FOUNDATION SLAB.

**GENERAL NOTES:**

THE CONTRACTOR IS ADVISED THAT THERE IS AN EXISTING SPRINKLER SYSTEM CONTAINED WITHIN THE PROJECT LIMITS. WHEN EXISTING SPRINKLER LINES ARE ENCOUNTERED THE EXISTING HEAD AND LINE ARE TO BE REMOVED AND CUT BACK TO THE EDGE OF EXCAVATION. NEW SPRINKLER LINE AND A NEW SPRINKLER HEAD ARE TO BE INSTALLED AS REQUIRED 1.0m BEYOND THE EXCAVATION LIMITS.

**METRIC**  
WHOLE NUMBERS INDICATE MILLIMETRES  
DECIMALIZED NUMBERS INDICATE METRES



BID OPPORTUNITY NO. 133-2010

	GAS		MANHOLE
	MTS		CATCH BASIN / CATCH PIT
	HYDRO		CURB INLET WITH BOX
	CATV/FO		TREE
	TRAFFIC SIGNALS/PIT		TEST HOLE
	LAND DRAINAGE SEWER		PROPERTY LINE
	SANITARY/COMBINED SEWER		SURVEY BAR
	SSP/DCP		FENCE
	WATERMAIN		BOC/EOPAVT
	SUBDRAIN		ELEVATION
	DITCH		TRAFFIC SIGN
	EXISTING		LEGEND - PLAN
	NEW		NEW

	CONCRETE PAVEMENT REMOVAL
	CONC. SIDEWALK/MEDIAN REMOVAL
	ASPHALT PAVEMENT PLANNING/REMOVAL

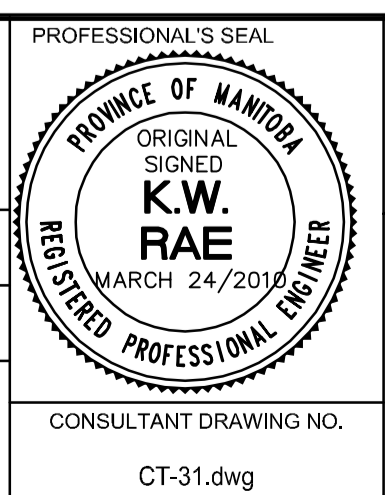
**LOCATION APPROVED UNDERGROUND STRUCTURES**

SUPR. U/G STRUCTURES COMMITTEE DATE

**NOTE:** LOCATION OF UNDERGROUND STRUCTURES AS SHOWN ARE BASED ON THE BEST INFORMATION AVAILABLE. BUT NO GUARANTEE IS GIVEN THAT ALL EXISTING UTILITIES ARE SHOWN OR THAT THE GIVEN LOCATIONS ARE EXACT. CONFIRMATION OF EXISTENCE AND EXACT LOCATION OF ALL SERVICES MUST BE OBTAINED FROM THE INDIVIDUAL UTILITIES BEFORE PROCEEDING WITH CONSTRUCTION.

<b>AECOM</b>	DESIGNED BY	KWR	CHECKED BY	WRJ
	DRAWN BY	BC	APPROVED BY	
	0 ISSUED FOR CONSTRUCTION	10/03/24	BC	
	B ISSUED FOR 100% REVIEW	10/03/08	BC	
	A ISSUED FOR 30% REVIEW	10/01/28	BC	
	NO. REVISIONS	YYMMDD	BY	DATE

HOR. SCALE 1:250  
VERT. SCALE N/A



**THE CITY OF WINNIPEG**  
PUBLIC WORKS DEPARTMENT  
ENGINEERING DIVISION

**JUBILEE AVENUE OVERPASS ASSOCIATED ROADWORKS**  
REMOVALS  
SHEET 2 OF 3

CITY DRAWING NUMBER B-124-10-31  
SHEET 31 OF 51  
DRAWING No. 31 REV 0

CONSULTANT DRAWING NO. CT-31.dwg