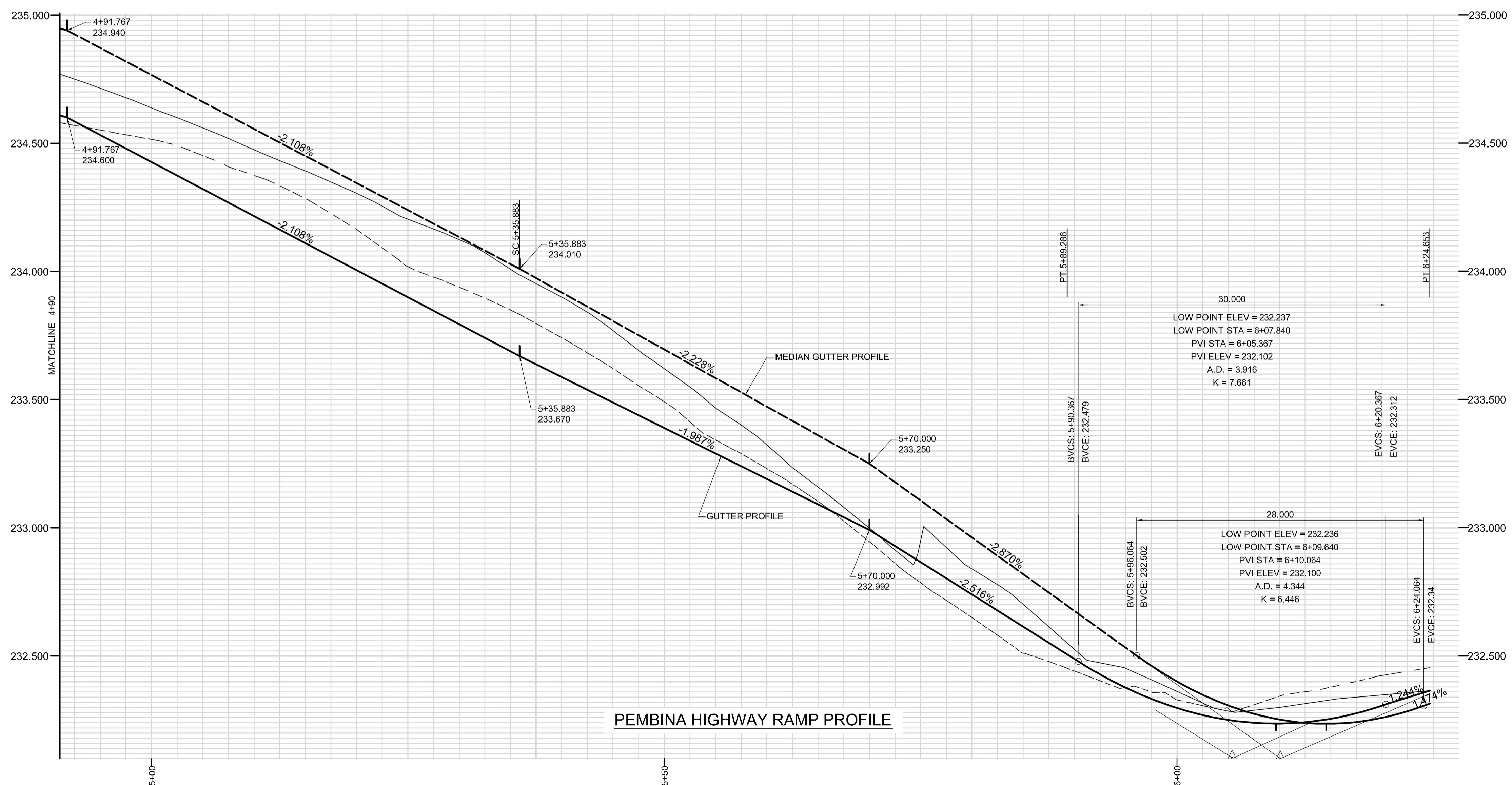
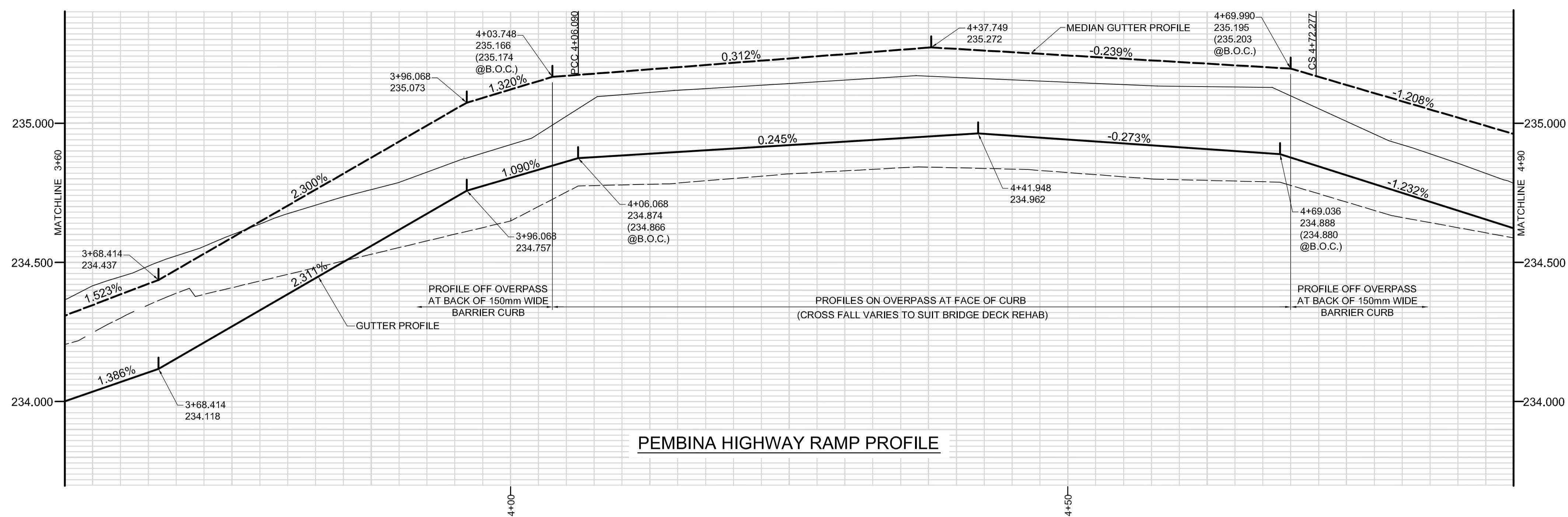


A1 SIZE 23.4" x 33.1" (594mm x 841mm)



AECOM
 Certificate of Authorization
 AECOM Canada Ltd.
 Original dated on:
 No. 4671 Date: 2010/03/24

METRIC
 WHOLE NUMBERS INDICATE MILLIMETRES
 DECIMALIZED NUMBERS INDICATE METRES

BD OPPORTUNITY NO. 133-2010

--- --	MEDIAN GUTTER PROFILE	--- --
---	GUTTER PROFILE	---

---	LOCATION APPROVED	---
---	UNDERGROUND STRUCTURES	---

SUPR. U/G STRUCTURES DATE COMMITTEE

NOTE:
 LOCATION OF UNDERGROUND STRUCTURES AS SHOWN ARE BASED ON THE BEST INFORMATION AVAILABLE. BUT NO GUARANTEE IS GIVEN THAT ALL EXISTING UTILITIES ARE SHOWN OR THAT THE GIVEN LOCATIONS ARE EXACT. CONFIRMATION OF EXISTENCE AND EXACT LOCATION OF ALL SERVICES MUST BE OBTAINED FROM THE INDIVIDUAL UTILITIES BEFORE PROCEEDING WITH CONSTRUCTION.

BM .	ELEV .

NO.	ISSUED FOR CONSTRUCTION	DATE	BY
0	ISSUED FOR CONSTRUCTION	10/03/24	BC
A	ISSUED FOR 100% REVIEW	10/03/08	BC
NO.	REVISIONS	DATE	BY

AECOM

DESIGNED BY: KWR CHECKED BY: WRJ
 DRAWN BY: BC APPROVED BY: (Signature)
 HOR. SCALE: 1:250 RELEASED FOR CONSTRUCTION
 VERT. SCALE: 1:10 DATE: (Date)

PROFESSIONAL'S SEAL
 PROVINCE OF MANITOBA
 ORIGINAL SIGNED
K.W. RAE
 REGISTERED PROFESSIONAL ENGINEER
 MARCH 24/2010
 CONSULTANT DRAWING NO. CT-42.dwg

THE CITY OF WINNIPEG
 PUBLIC WORKS DEPARTMENT
 ENGINEERING DIVISION

JUBILEE AVENUE OVERPASS ASSOCIATED ROADWORKS
 PEMBINA HIGHWAY RAMP PROFILE
 SHEET 1 OF 2

CITY DRAWING NUMBER	REV
B124-10-42	
SHEET 42 OF 51	
DRAWING No.	
42	0