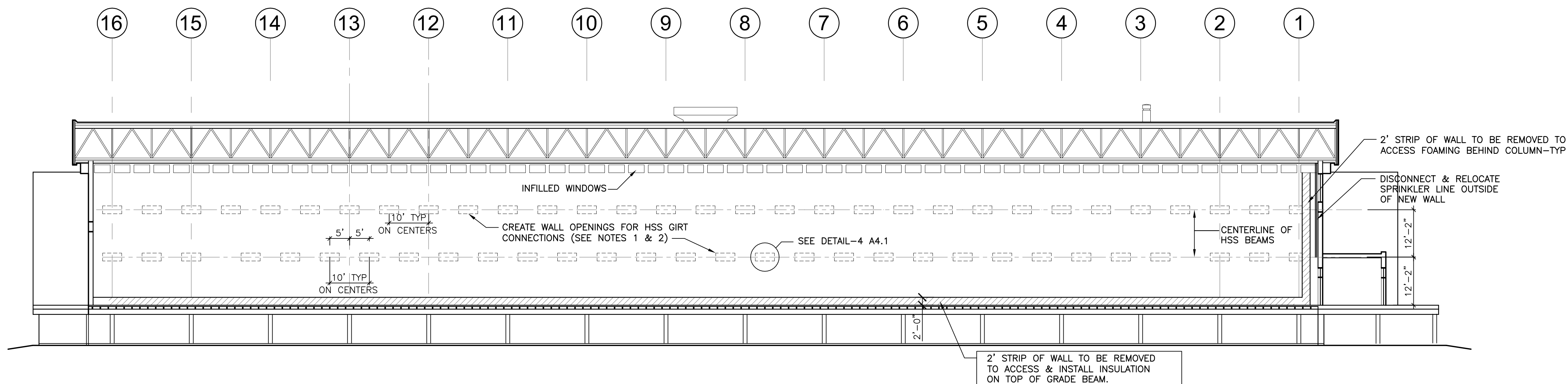


1 NEW INTERIOR ELEVATION (SOUTH)
SCALE: 1/16"=1'-0"



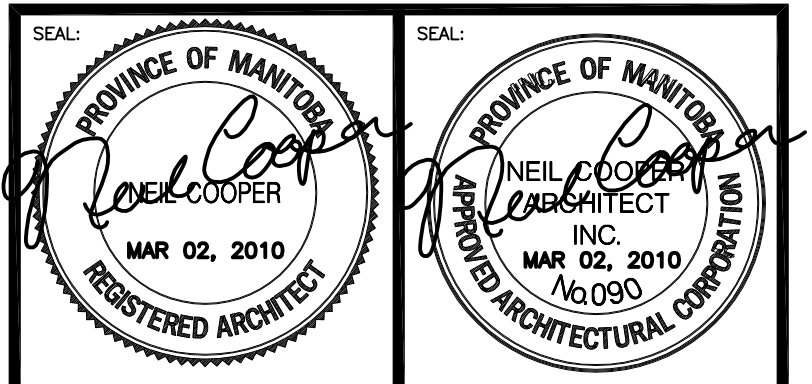
2 EXIST INTERIOR ELEVATION (SOUTH)
SCALE: 1/16"=1'-0"

- NOTES:
1. EXISTING CEMENT PLASTER CONTAINS ASBESTOS FIBERS.
 2. CONTRACTOR TO EMPLOY REMEDIATION PROCEDURES IN DEALING WITH ACCESS HOLES.

COLOUR SCHEME:

- QUARZPUTZ ACCENT BASE
 COLOUR-1 DRYVIT 409A
 COLOUR-2 DRYVIT 421A
 COLOUR-3 DRYVIT 415A
 COLOUR-4 DRYVIT 513A
 COLOUR-5 DRYVIT 515A

REV	DESCRIPTION	DATE	BY
0	ISSUED FOR TENDER	MAR 02, 2010	AL



THIS DRAWING MUST NOT BE SCALED.
 THE GENERAL CONTRACTOR SHALL VERIFY ALL DIMENSIONS, DATUMS AND LEVELS PRIOR TO COMMENCEMENT OF WORK AND IS HELD RESPONSIBLE FOR REPORTING ANY DISCREPANCY OR OMISSION TO NEIL COOPER ARCHITECT INC. IMMEDIATELY.
 THIS DRAWING IS THE EXCLUSIVE PROPERTY OF NEIL COOPER ARCHITECT INC. AND CAN BE REPRODUCED ONLY WITH THE PERMISSION OF NEIL COOPER ARCHITECT INC. IN WHICH CASE THE REPRODUCTION MUST BEAR THEIR NAME AS THE ARCHITECTURAL FIRM.

DRAWING: SOUTH WALL INTERIOR ELEVATION
 PROJECT: PAN AM POOL BLDG ENVELOPE RETROFIT PHASE 2
 25 Poseidon Bay, Winnipeg, Manitoba

Neil Cooper Architect Inc.
 10-395 Berry Street, Winnipeg, Manitoba R3J 1N6

Tuplin Group Inc.
 Unit L 301 Weston Street, Winnipeg, Manitoba R3E 3H4

DRAWN BY: AG/AL	CHECKED BY: NC	SHEET NO: A3.1R-0	REV NO:
DATE: JUNE 22, 2009		REV NO:	
SCALE: As Noted		REV NO:	

FILE: 08062\PAN AM POOL\ CONT DOC.\ CONT. DWGS.\PHASE 2\A5.1