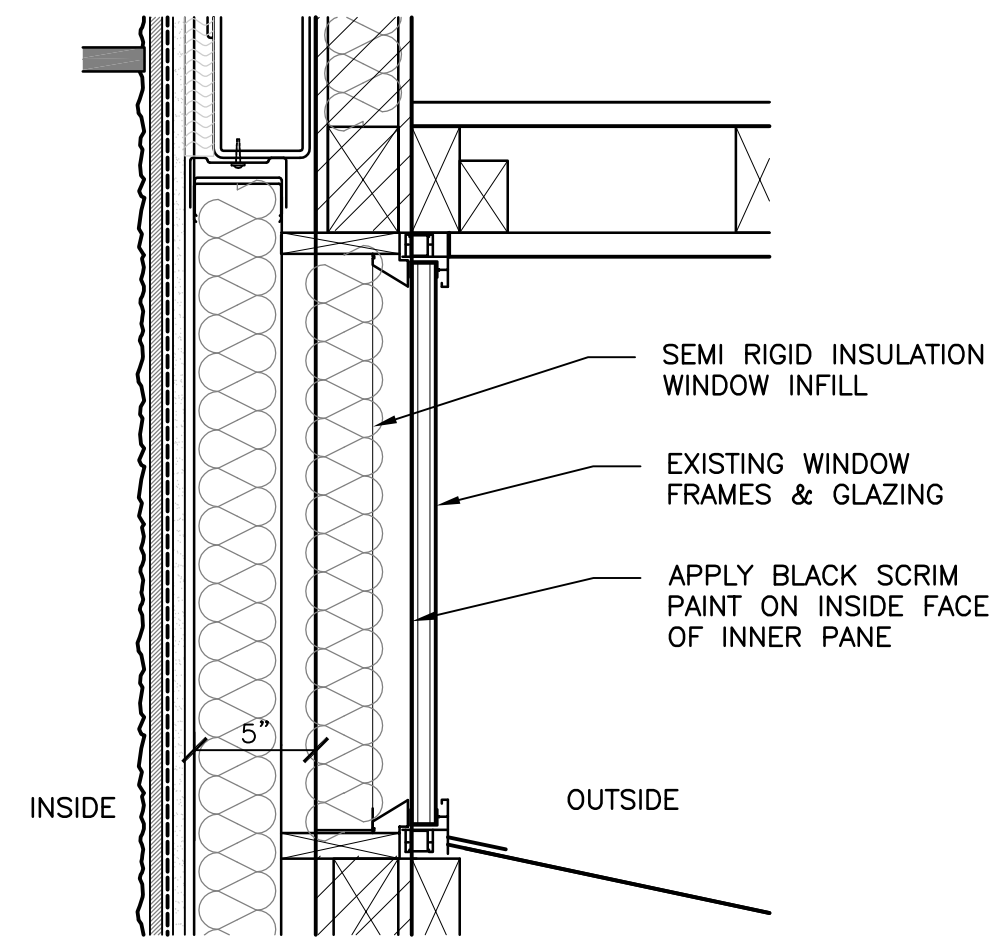
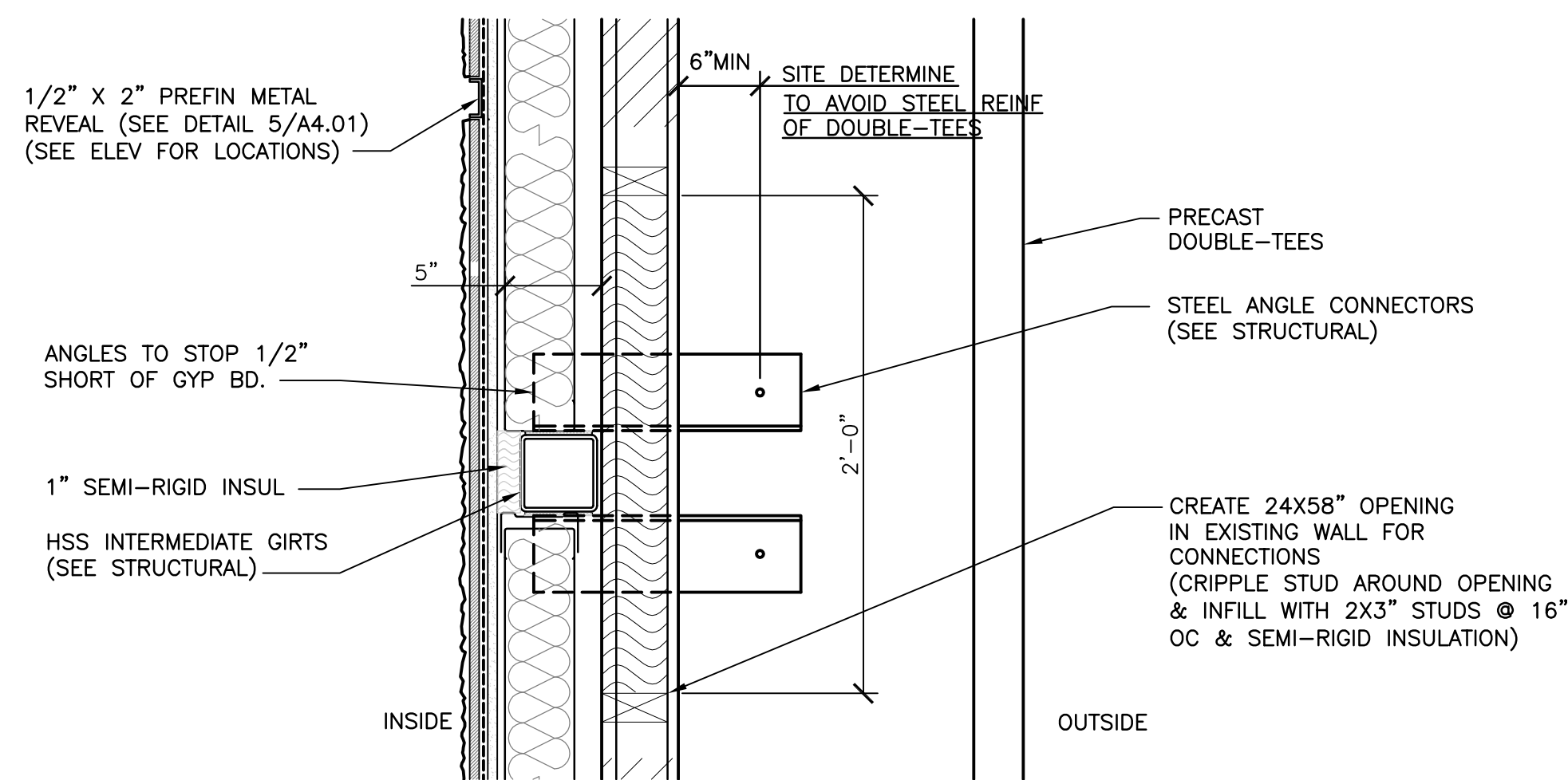


1 WALL END DETAIL (TOP)
SCALE: 1 1/2"=1'-0"

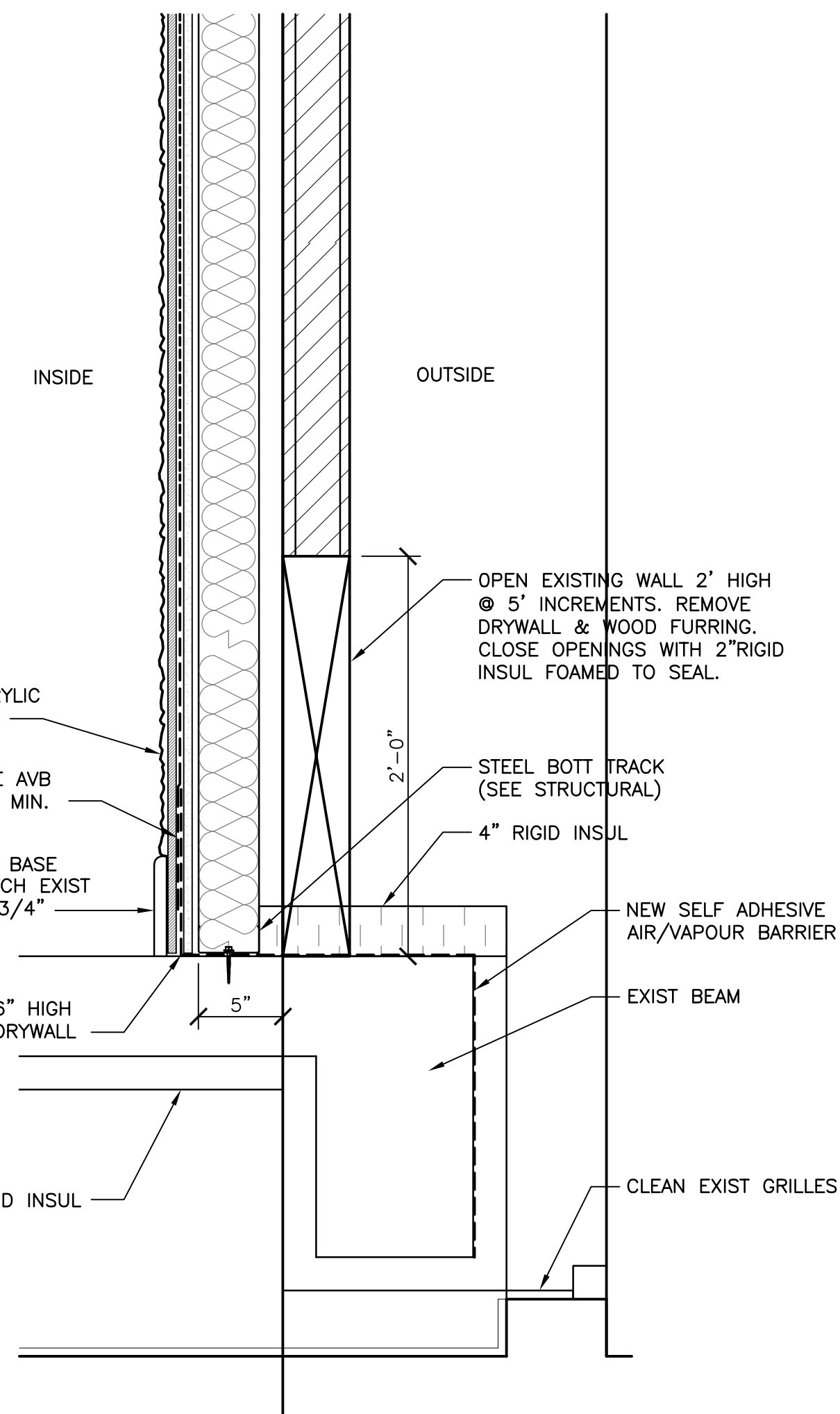
NOTE:
CUT ON EXISTING TRUSS DRYWALL COVER ON BOTH SIDES FOR THE HSS GIRT TO CONTACT TRUSSES (REPAIR DAMAGED AREAS AFTER INSTALLATION)



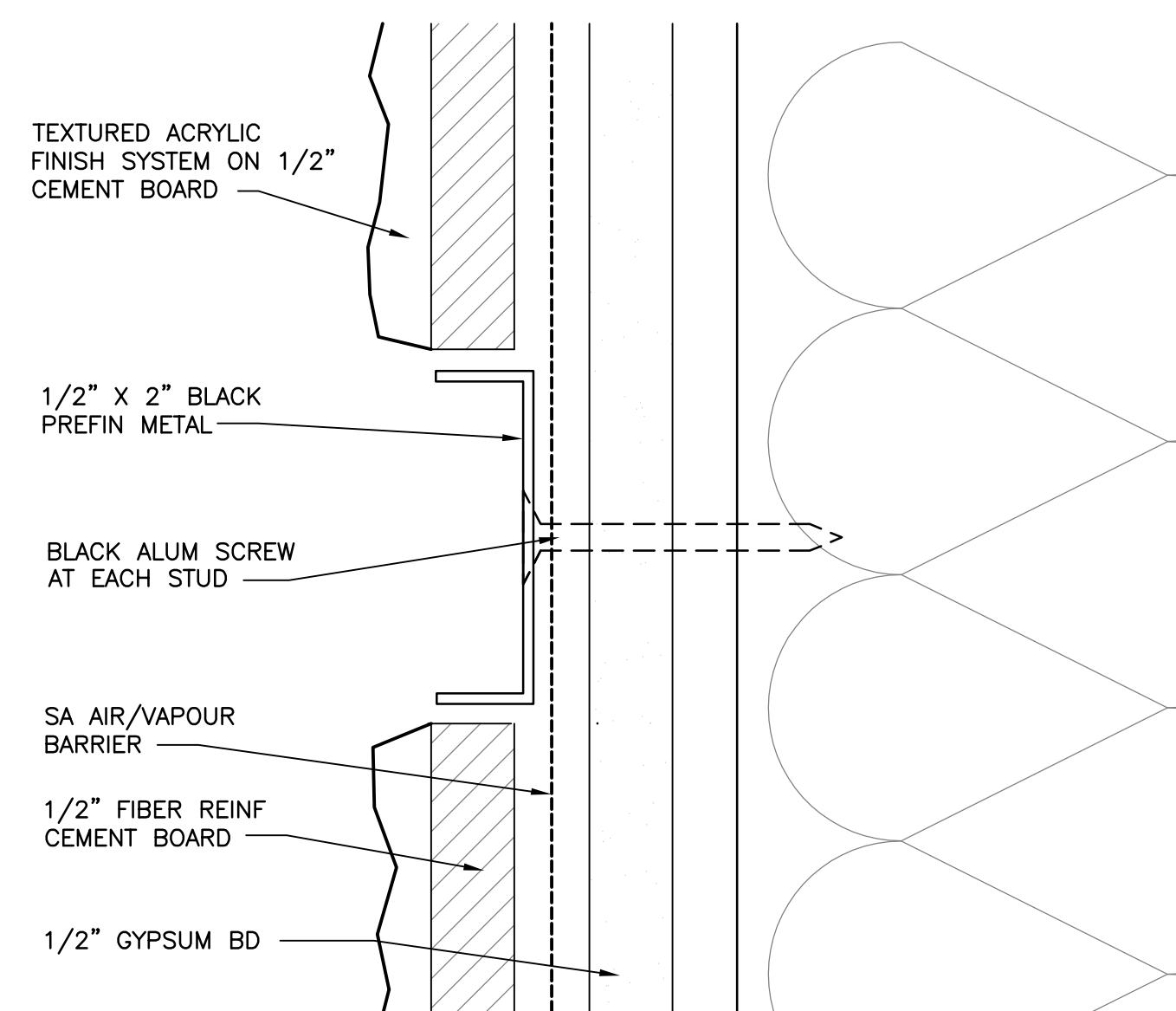
2 WINDOW INFILL DETAIL
SCALE: 1 1/2"=1'-0"



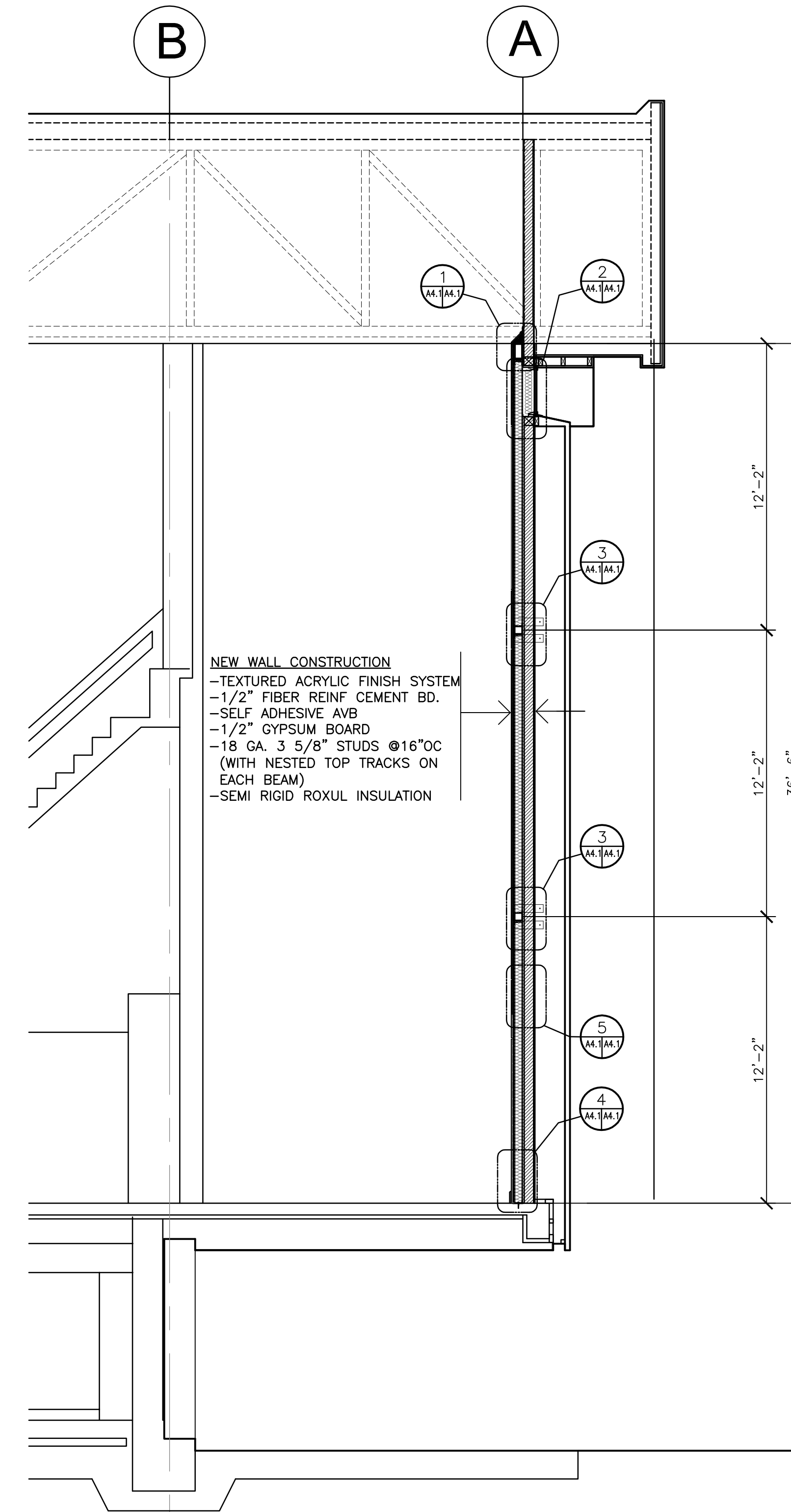
3 HSS GIRTS CONNECTION DETAIL
SCALE: 1 1/2"=1'-0"



4 WALL BASE CONNECTION DETAIL
SCALE: 1 1/2"=1'-0"

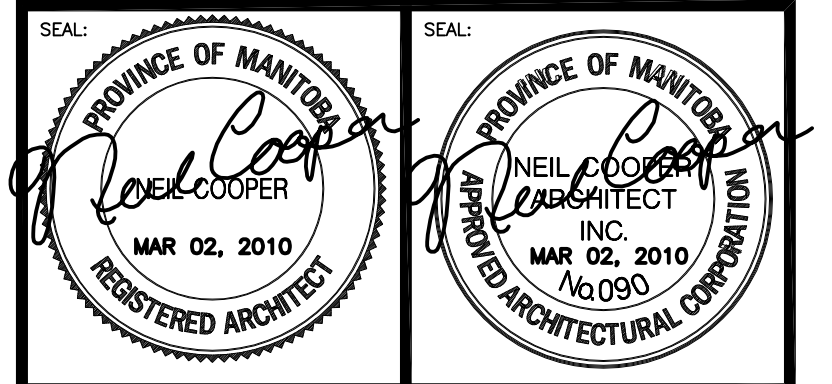


5 REVEAL DETAIL
SCALE: 1'=1'-0"



6 WALL SECTION
SCALE: 1/4"=1'-0"

REV	DESCRIPTION	DATE	BY
0	ISSUED FOR TENDER	MAR 02, 2010	AL



THIS DRAWING MUST NOT BE SCALED.
THE GENERAL CONTRACTOR SHALL VERIFY ALL DIMENSIONS, DATUMS AND LEVELS PRIOR TO COMMENCEMENT OF WORK AND IS HELD RESPONSIBLE FOR REPORTING ANY DISCREPANCY OR OMISSION TO NEIL COOPER ARCHITECT INC. IMMEDIATELY.

THIS DRAWING IS THE EXCLUSIVE PROPERTY OF NEIL COOPER ARCHITECT INC. AND CAN BE REPRODUCED ONLY WITH THE PERMISSION OF NEIL COOPER ARCHITECT INC. IN WHICH CASE THE REPRODUCTION MUST BEAR THEIR NAME AS THE ARCHITECTURAL FIRM.

DRAWING:

SOUTH WALL SECTION & DETAILS

PROJECT:
PAN AM POOL BLDG ENVELOPE RETROFIT PHASE 2
25 Poseidon Bay, Winnipeg, Manitoba

Neil Cooper Architect Inc.
10-395 Berry Street, Winnipeg, Manitoba R3J 1N6

Tuplin Group Inc.
Unit L 301 Weston Street, Winnipeg, Manitoba R3E 3H4

DRAWN BY:	CHECKED BY:	SHEET NO.:	REV NO.:
AG/AL	NC	A4.1R-0	
DATE:	JUNE 22, 2009		
SCALE:	As Noted		

FILE: 08062\PAN AM POOL\ CONT. DWS.\PHASE 2\A4.1 R0