

**CITY OF WINNIPEG**

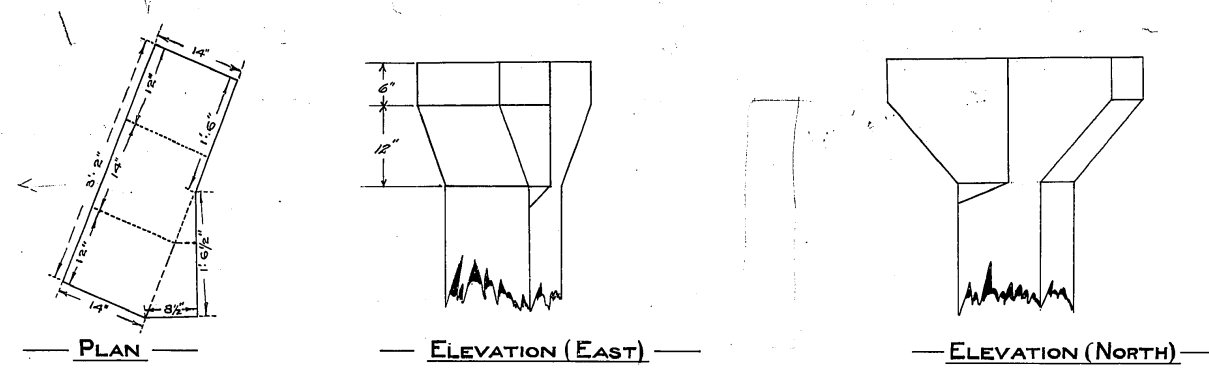
**18,000,000 GAL. RESERVOIR**

**DETAILS OF APRON EAST & WEST SIDES**

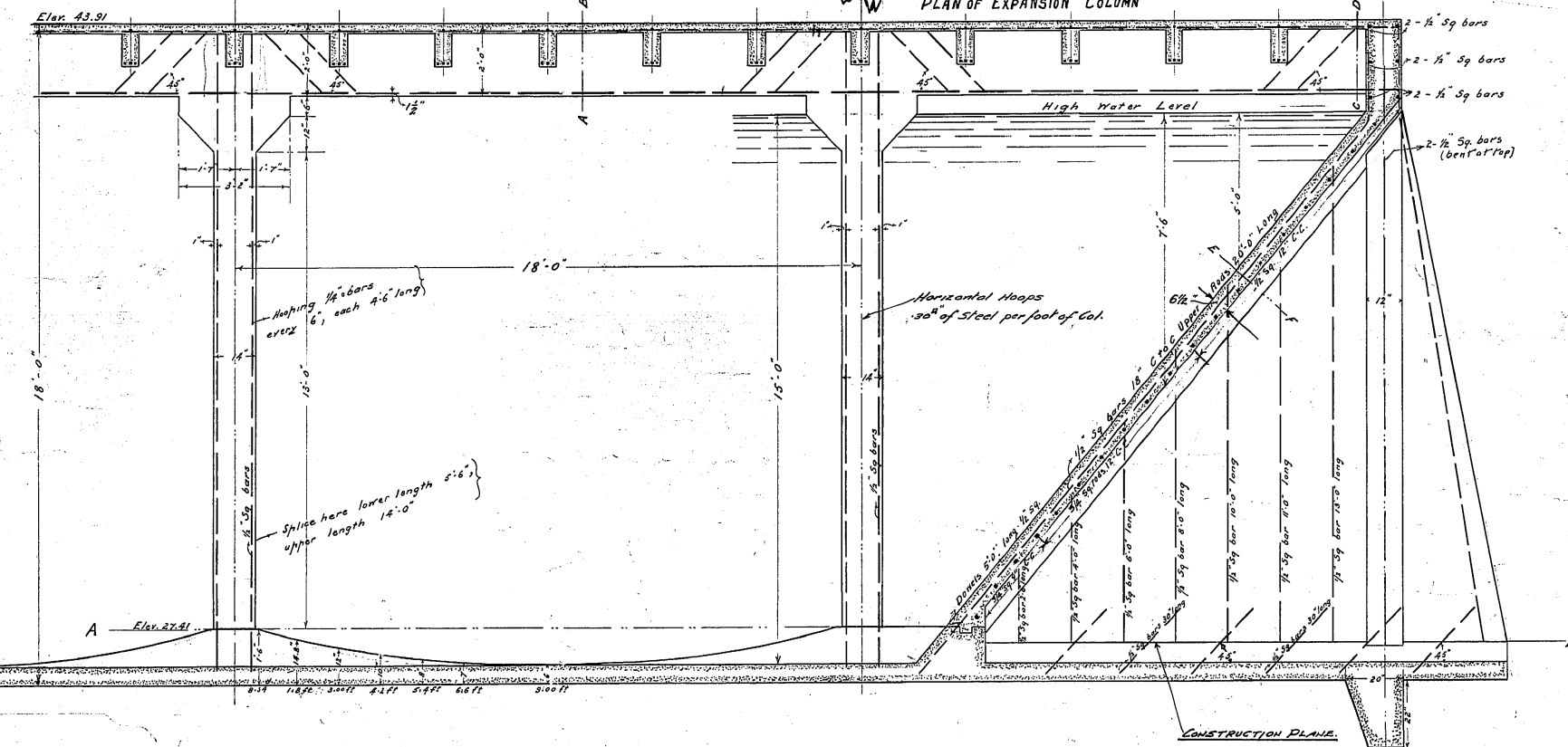
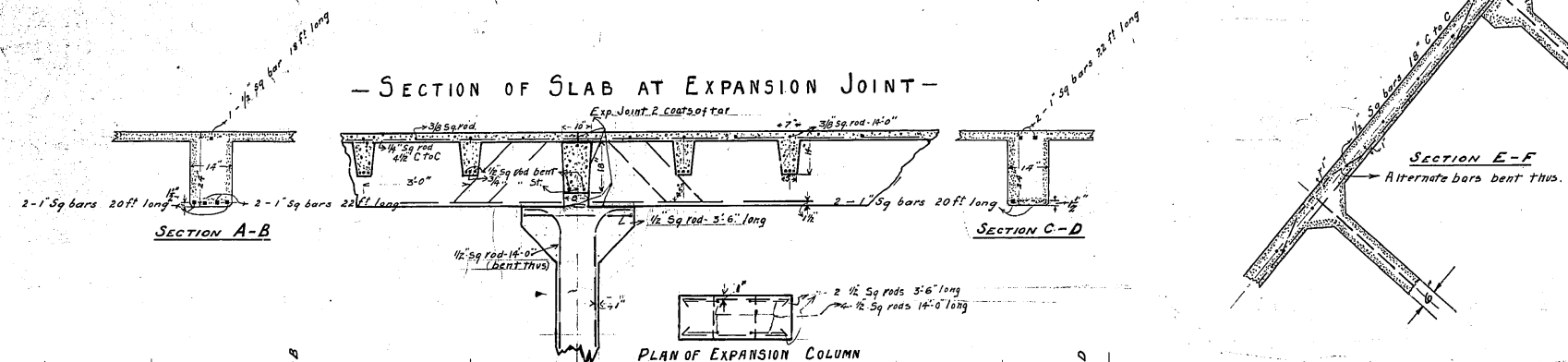
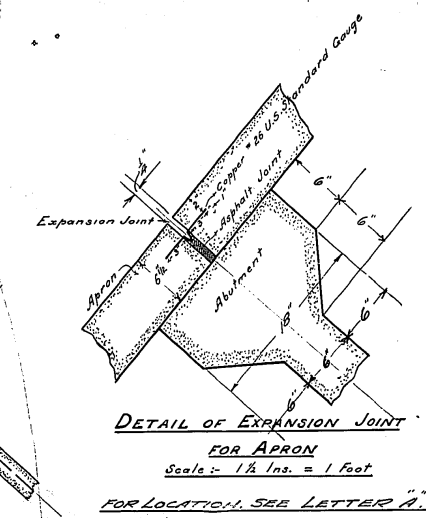
& SPECIAL CAPS FOR COLUMN.  
SCALE = 1/2 IN. = 1 FOOT

CITY ENGINEER'S OFFICE  
WINNIPEG MAN. DEC 26/12

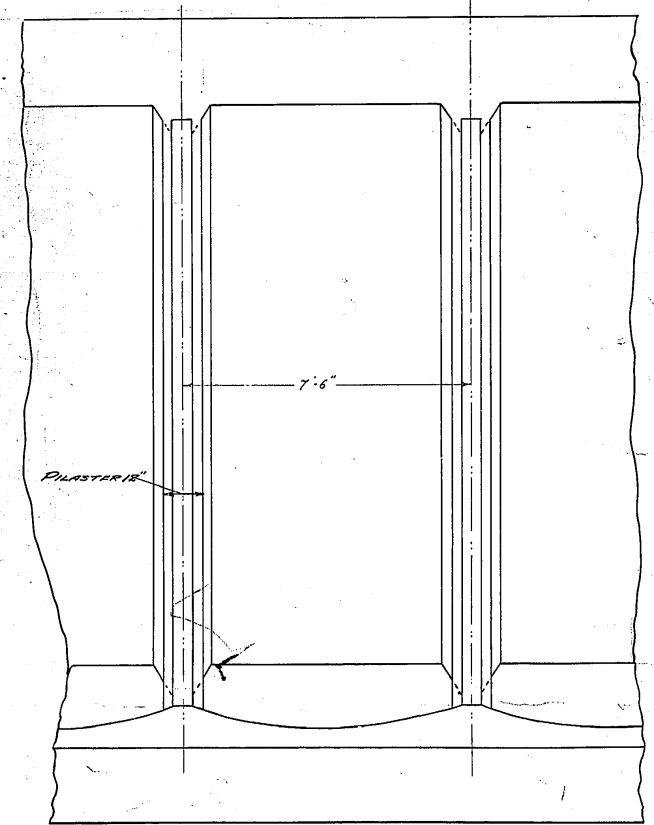
H.N. RUTTAN  
CITY ENGINEER



— PLAN —  
— ELEVATION (EAST) —  
— ELEVATION (NORTH) —  
— DETAILS OF SPECIAL CAP FOR INTERSECTION OF PRIMARY BEAMS SOUTH SIDE —  
— SCALE: 1/2 IN. = 1 FT. — MARK I, PLAN # 5880.



SECTION O-P DWG NO 5878



ELEVATION OF EAST & WEST SIDES.

5296  
#5875  
#5296