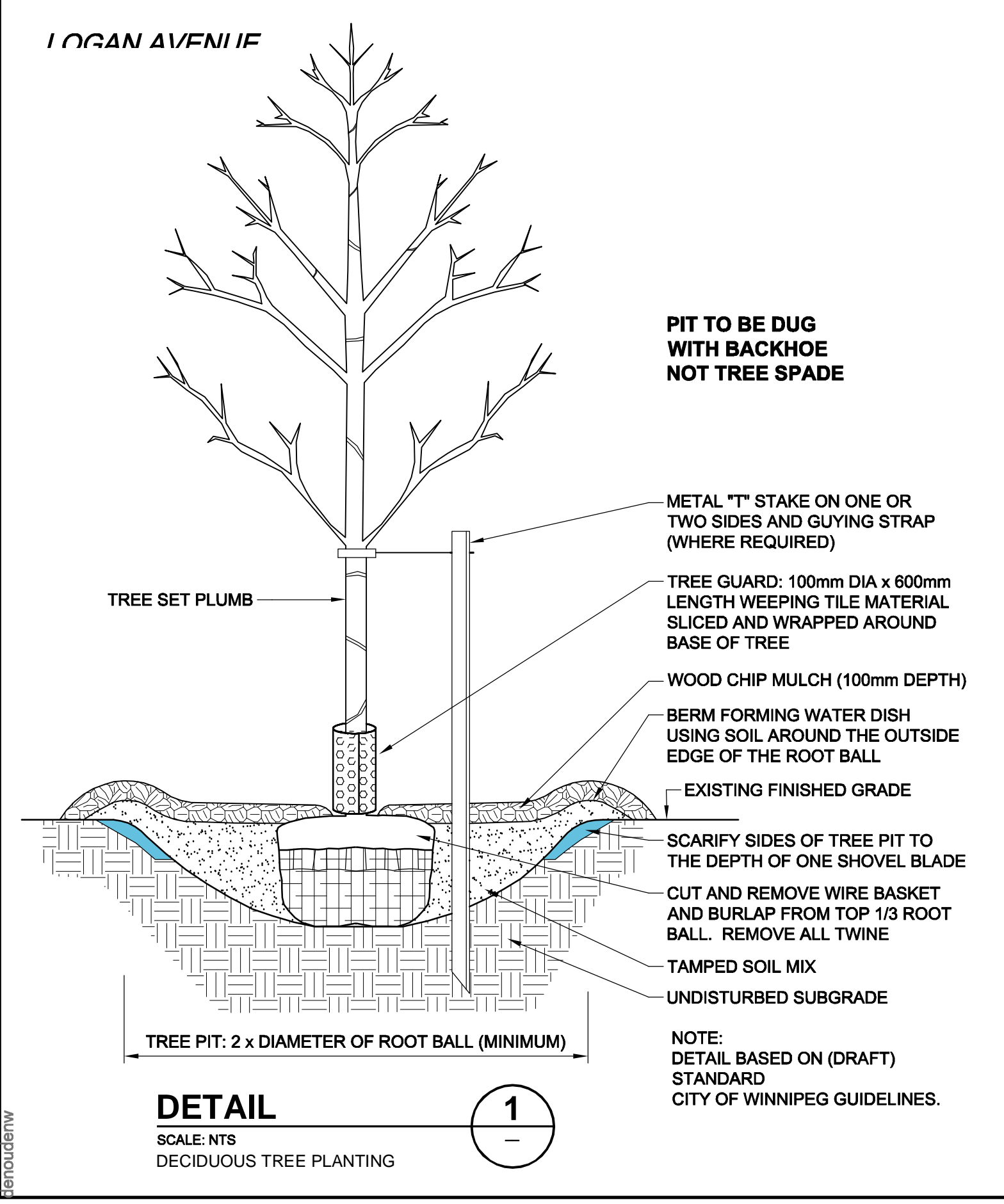
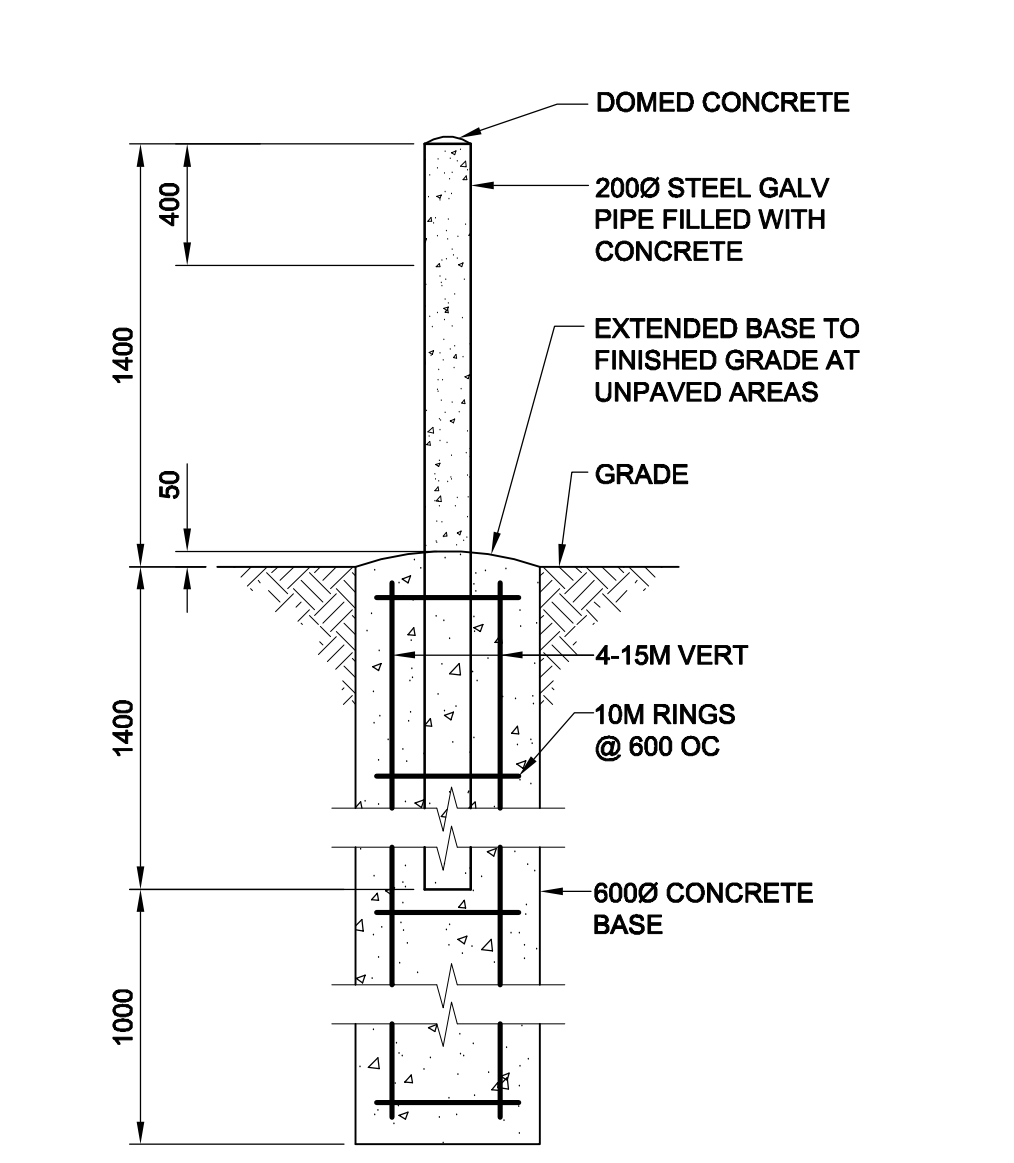
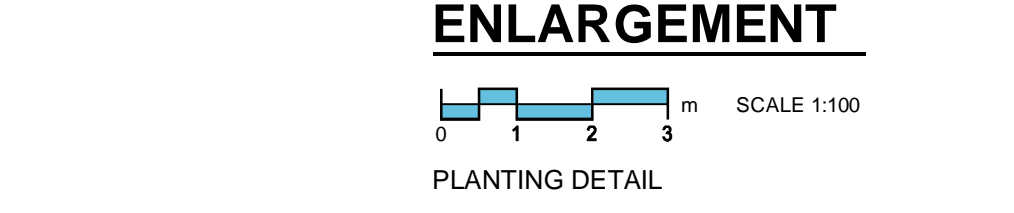
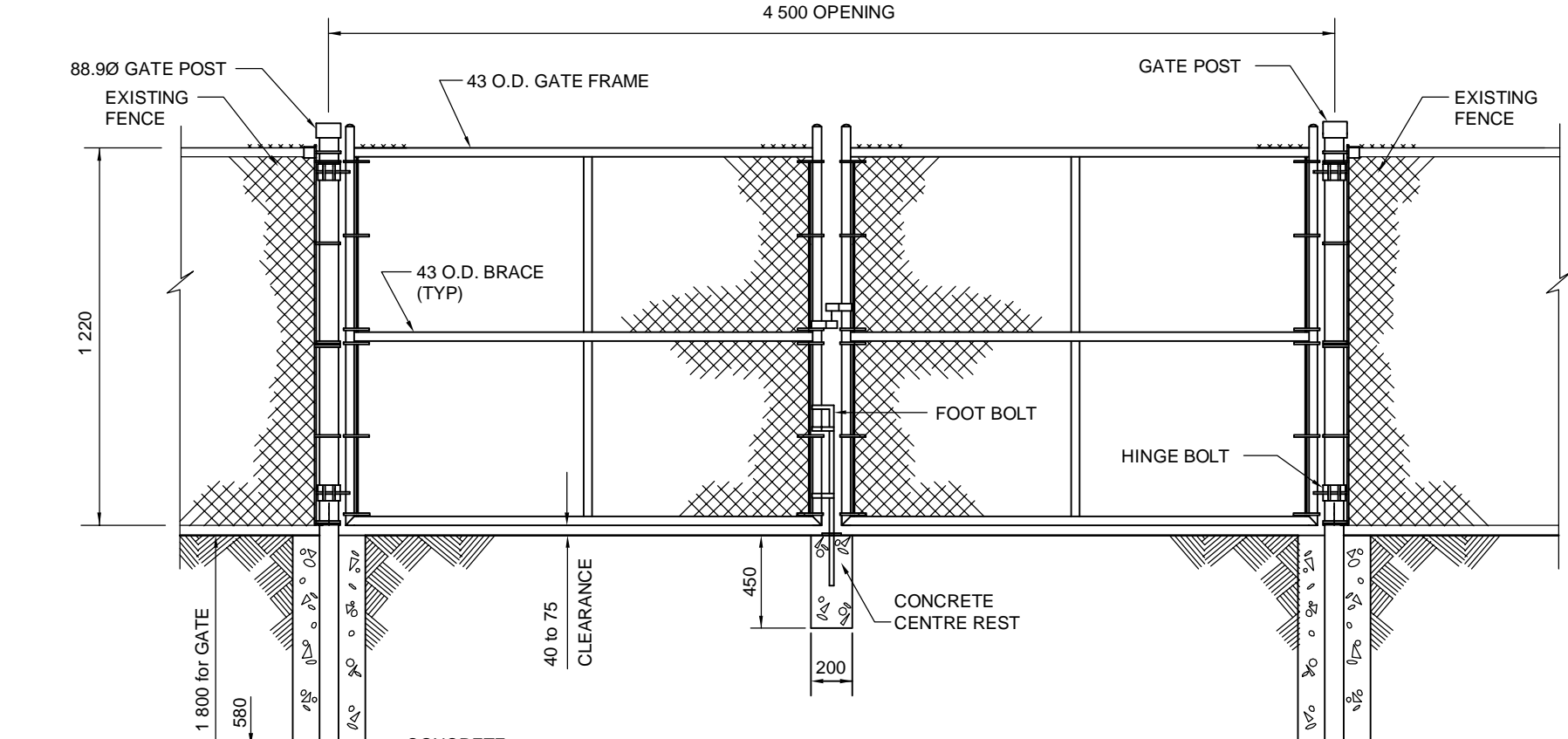
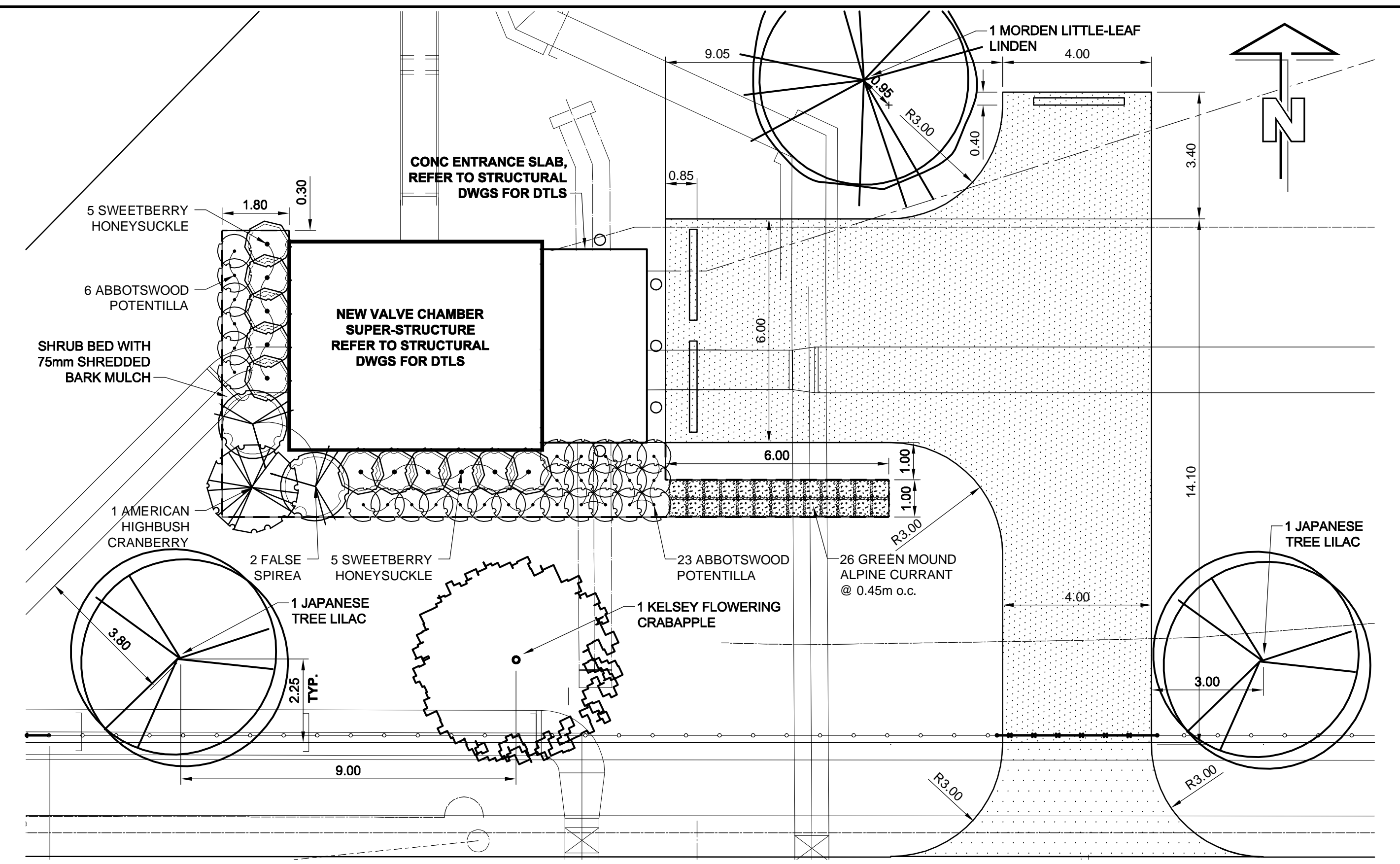
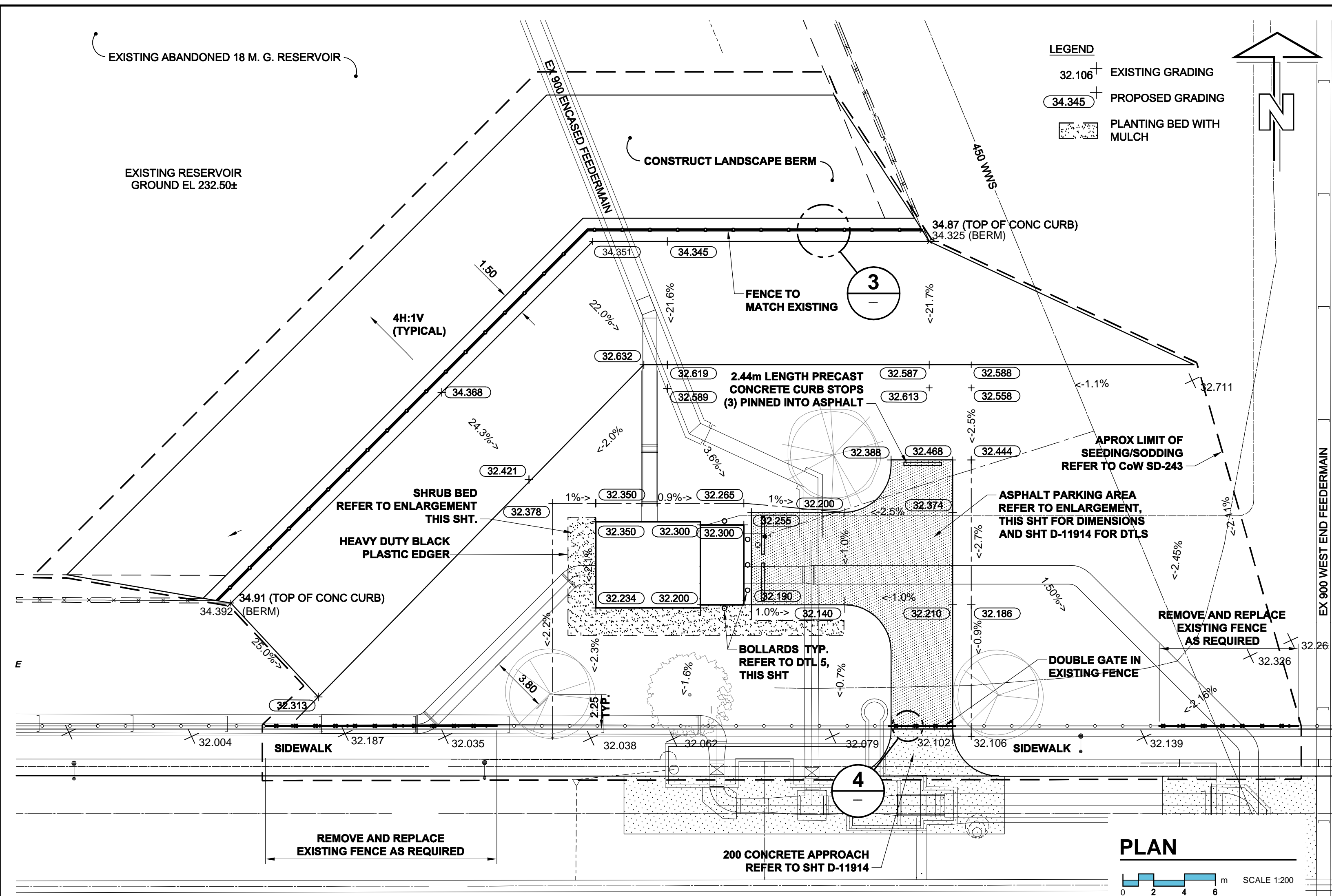


D SIZE 22" x 34" (559mm x 864mm)

PLOT: 10/02/09 4:47:23 PM

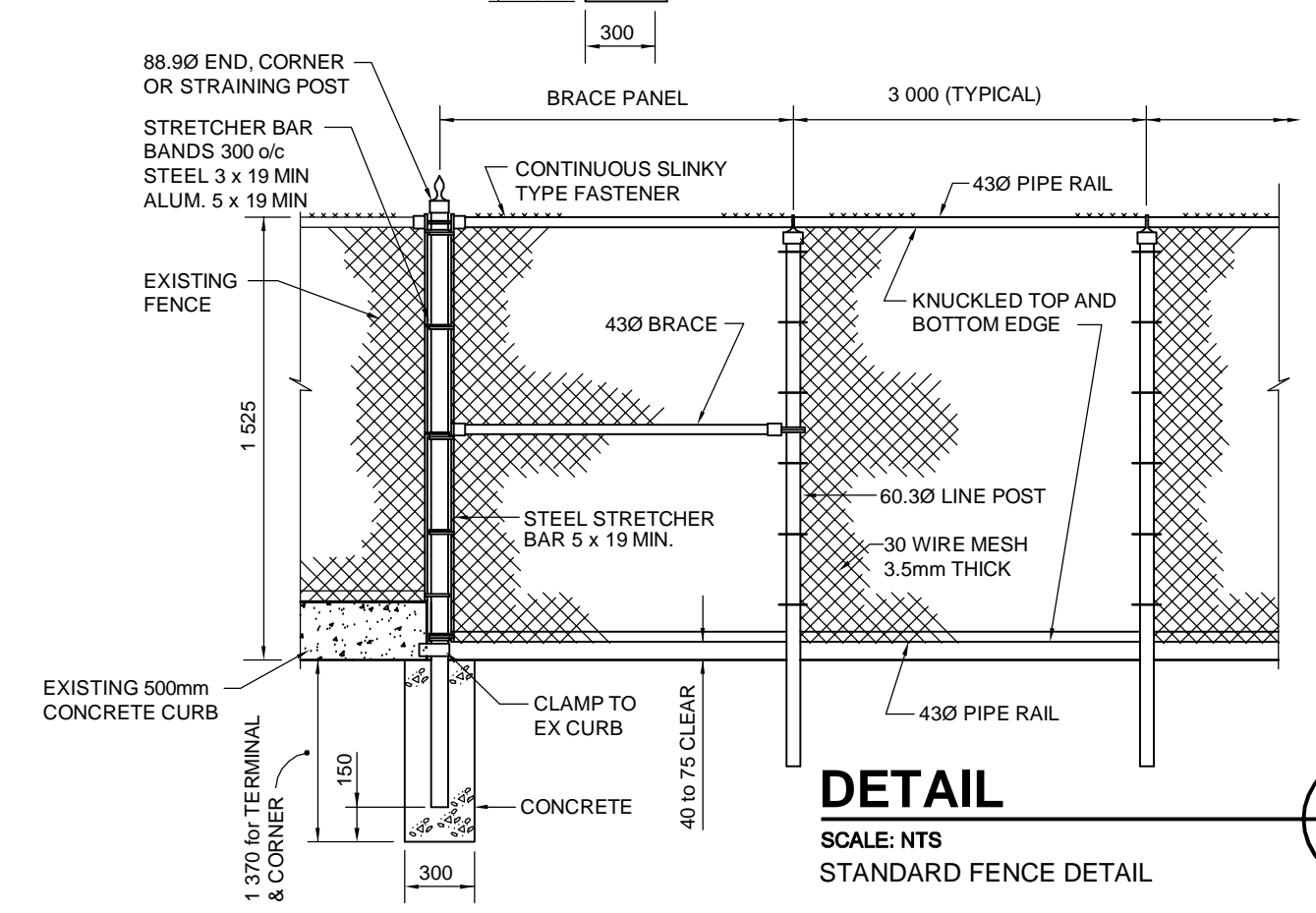
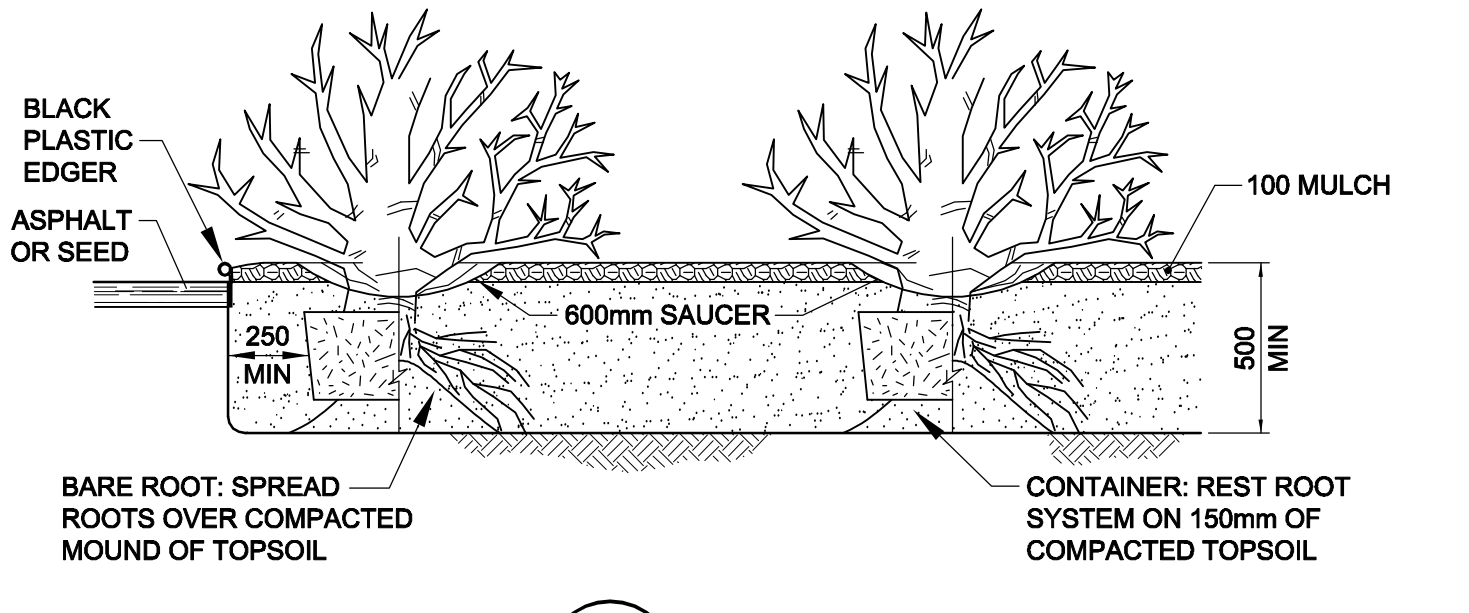
AECOM REVIEW DRFT CHK WCO
AECOM FILE NAME: D265-250-00_01-L-1001_RX.dwg Saved By: [unreadable]



PLANT LIST

No.	COMMON NAME	BOTANICAL NAME	SIZE/HEIGHT	NOTES
DECIDUOUS TREES				
1	Morden Little-Leaf Linden	Tilia cordata 'Morden'	65mm caliper	B&B/Container
1	Kelsey Flowering Crabapple	Malus x adstringens 'Kelsey'	45mm caliper	B&B/Container
2	Japanese Tree Lilac	Syringa reticulata	45mm caliper	B&B/Container
DECIDUOUS SHRUBS				
1	American Highbush Cranberry	Viburnum trilobum	1.20m ht.	B&B/Container
2	False Spirea	Sorbaria sorbifolia	0.75m ht.	B&B/Container
10	Sweetberry Honeysuckle	Lonicera caerulea var. edulis	0.75m ht.	B&B/Container
29	Abbotswood Potentilla	Potentilla fruticosa 'Abbotswood'	0.60m ht.	B&B/Container
26	Green Mound Alpine Currant	Ribes alpinum 'Green Mound'	0.60m ht.	B&B/Container

SPECIFICATION: All plant material to be supplied and installed in accordance with the latest edition of Landscape Canada's Metric Guide Specifications for Nursery Stock.



LOCATION APPROVED UNDERGROUND STRUCTURES

SUPR. U/G STRUCTURES COMMITTEE DATE

NOTE: LOCATION OF UNDERGROUND STRUCTURES AS SHOWN ARE BASED ON THE BEST INFORMATION AVAILABLE. BUT NO GUARANTEE IS GIVEN THAT ALL EXISTING UTILITIES ARE SHOWN OR THAT THE GIVEN LOCATIONS ARE EXACT. CONFIRMATION OF EXISTENCE AND EXACT LOCATION OF ALL SERVICES MUST BE OBTAINED FROM THE INDIVIDUAL UTILITIES BEFORE PROCEEDING WITH CONSTRUCTION.

NO.	ISSUED FOR CONSTRUCTION	DATE	BY
0	ISSUED FOR CONSTRUCTION	10/02/09	LJV
NO.	REVISIONS	YYMMDD	BY

AECOM

DESIGNED BY: LJV/MGM
 CHECKED BY: Don Hester
 DRAWN BY: LJV
 APPROVED BY: Bryan Weber
 HOR. SCALE: AS NOTED
 VERT. SCALE: -
 DATE: 10/02/09
 RELEASED FOR CONSTRUCTION: K. Zurek, Feb 9/10

PROFESSIONAL'S SEAL
 ORIGINAL SEALED BY: L. JOY VIBERG, FEB 8/10
 CONSULTANT DRAWING NO.: D265-250-00_01-L-1001_RX.dwg

BID OPPORTUNITY NO. 16-2010

THE CITY OF WINNIPEG WATER AND WASTE DEPARTMENT

BRANCH I AQUEDUCT VALVE CHAMBER AT McPHILLIPS STREET PUMPING STATION

LANDSCAPING SITE LAYOUT & LANDSCAPING

SHEET 2 OF 28
 CITY DRAWING NUMBER
 REV 0
D-11912