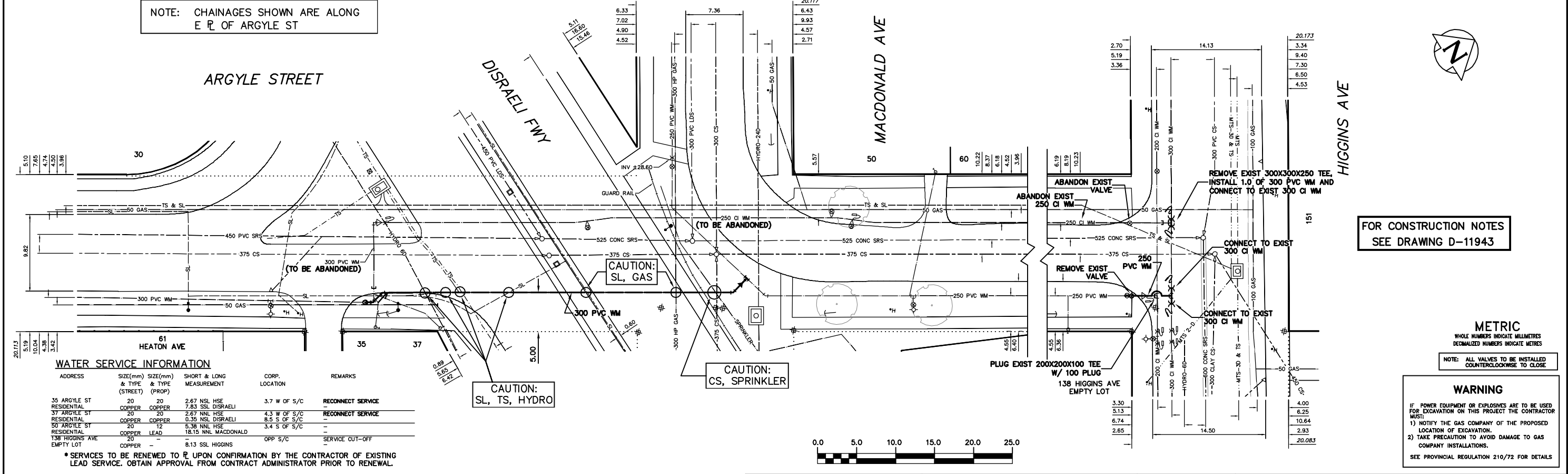


NOTE: CHAINAGES SHOWN ARE ALONG E R OF ARGYLE ST



FOR CONSTRUCTION NOTES
SEE DRAWING D-11943

METRIC
WHOLE NUMBERS INDICATE MILLIMETRES
DECIMALIZED NUMBERS INDICATE METRES

WARNING
IF POWER EQUIPMENT OR EXPLOSIVES ARE TO BE USED FOR EXCAVATION ON THIS PROJECT THE CONTRACTOR MUST:
1) NOTIFY THE GAS COMPANY OF THE PROPOSED LOCATION OF EXCAVATION.
2) TAKE PRECAUTION TO AVOID DAMAGE TO GAS COMPANY INSTALLATIONS.
SEE PROVINCIAL REGULATION 210/72 FOR DETAILS

WATER SERVICE INFORMATION

ADDRESS	SIZE(mm) & TYPE (STREET)	SIZE(mm) & TYPE (PROP)	SHORT & LONG MEASUREMENT	CORP. LOCATION	REMARKS
35 ARGYLE ST RESIDENTIAL	20 COPPER	20 COPPER	2.67 NSL HSE 7.83 SSL DISRAELI	3.7 W OF S/C	RECONNECT SERVICE
37 ARGYLE ST RESIDENTIAL	20 COPPER	20 COPPER	2.67 NSL HSE 0.35 NSL DISRAELI	4.3 W OF S/C 8.5 S OF S/C	RECONNECT SERVICE
50 ARGYLE ST RESIDENTIAL	20 COPPER	12 COPPER	5.38 NSL HSE 18.15 NNL MACDONALD	3.4 S OF S/C	
138 HIGGINS AVE EMP TY LOT	20 COPPER	20 COPPER	8.13 SSL HIGGINS	OPP S/C	SERVICE CUT-OFF

* SERVICES TO BE RENEWED TO R UPON CONFIRMATION BY THE CONTRACTOR OF EXISTING LEAD SERVICE. OBTAIN APPROVAL FROM CONTRACT ADMINISTRATOR PRIOR TO RENEWAL.

EXISTING	LEGEND-PLAN	PROPOSED	EXISTING	LEGEND-PLAN	PROPOSED	EXISTING	LEGEND-PROFILE	PROPOSED
200 WM	WATERMAIN	200 WM	SL, HYDRO	150 WM	WATERMAIN	150 WM	WATERMAIN	150 WM
525 LDS	LAND DRAINAGE SEWER	525 LDS	50 GAS	300 LDS	LAND DRAINAGE SEWER	300 LDS	LAND DRAINAGE SEWER	300 LDS
375 WWS	WASTEWATER SEWER	375 WWS	250 WWS	250 WWS	WASTEWATER SEWER	250 WWS	WASTEWATER SEWER	250 WWS
○	MANHOLE	●	* * * * *	⊕	PROFILE	⊕	PROFILE	⊕
□	CATCH BASIN	■	* * H * T	⊕	POLE - HYDRO, MTS	⊕	GROUND ABOVE PIPE	⊕
▽	CURB INLET	▽	○	⊕	CURB STOP	⊕	⊕ DITCH (NORTH & WEST)	⊕
∇	REDUCER	∇	←	⊕	GUY ANCHOR	⊕	⊕ DITCH (SOUTH & EAST)	⊕
X	COUPLER	X	→	⊕	LIGHT STANDARD	⊕	⊕ GUTTER (NORTH & WEST)	⊕
⊕	ANODE	⊕	○	⊕	TREE	⊕	⊕ GUTTER (SOUTH & EAST)	⊕

LOCATION APPROVED
UNDERGROUND STRUCTURES

SUPV. U/G STRUCTURES COMMITTEE DATE

NOTE:
LOCATION OF UNDERGROUND STRUCTURES AS SHOWN ARE BASED ON THE BEST INFORMATION AVAILABLE BUT NO GUARANTEE IS GIVEN THAT THE GIVEN LOCATIONS ARE EXACT. CONFIRMATION OF EXISTENCE AND EXACT LOCATION OF ALL SERVICES MUST BE OBTAINED FROM THE INDIVIDUAL UTILITIES BEFORE PROCEEDING WITH CONSTRUCTION.

CITY OF WINNIPEG
WATER AND WASTE
ENGINEERING DIVISION

DESIGNED BY AS CHECKED BY SC/KZ
DRAWN BY CJH APPROVED BY KZ

HOR. SCALE 1:250
VERTICAL SCALE 1:50

RELEASED FOR CONSTRUCTION
DATE 2010 03 08

ENGINEER'S SEAL
ORIGINAL MYLAR SIGNED BY
A.J. SINGBEIL
10/03/08

BID OPPORTUNITY 192-2010
FILENAME: D-11941.dwg
PLOT DATE: 2010 03 09

THE CITY OF WINNIPEG
WATER AND WASTE DEPARTMENT

2010 WATERMAIN RENEWALS
CONTRACT NO 1
ARGYLE STREET
45 S OF DISRAELI FREEWAY TO
HIGGINS AVENUE

SHEET 1 OF 14
CITY DRAWING NUMBER
D-11941