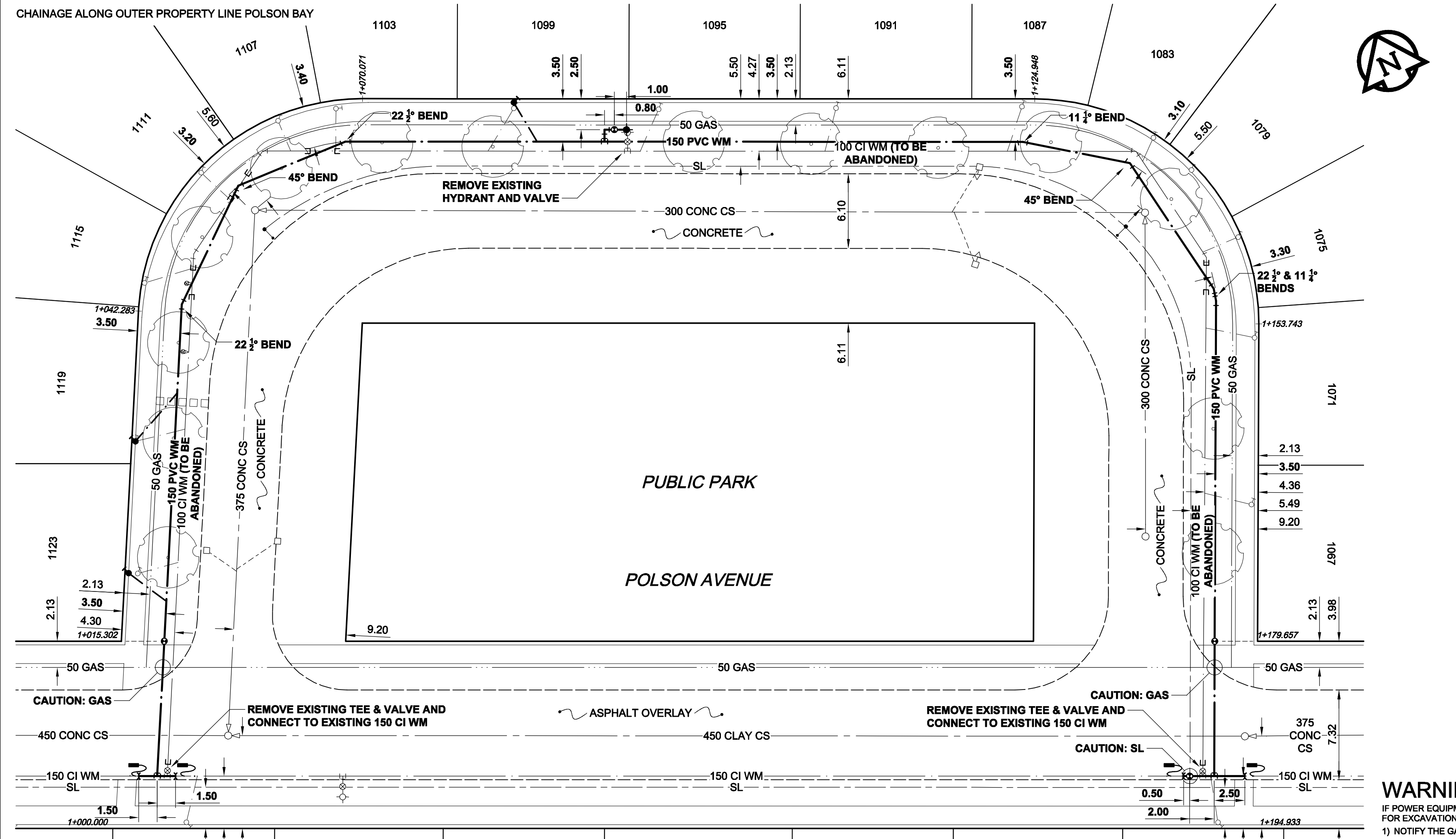
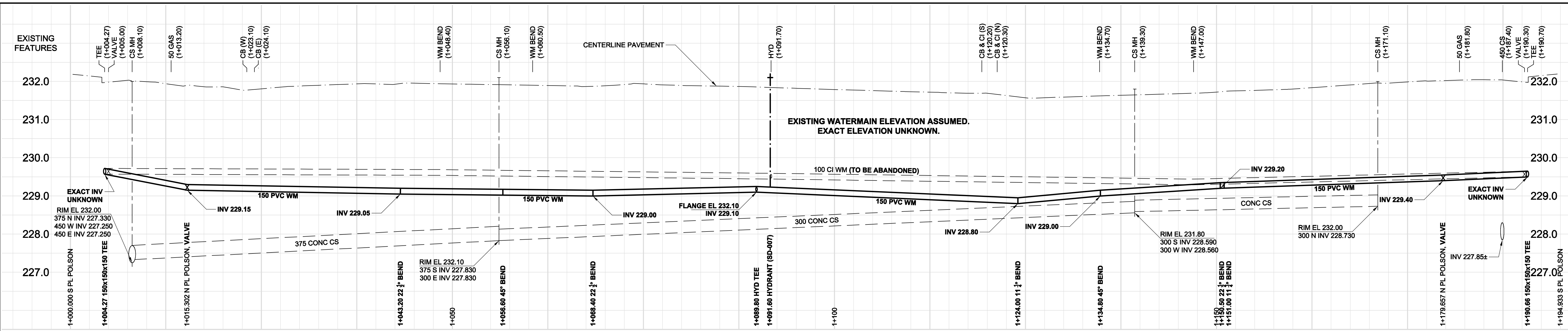


D SIZE 22" x 34" (559mm x 864mm)

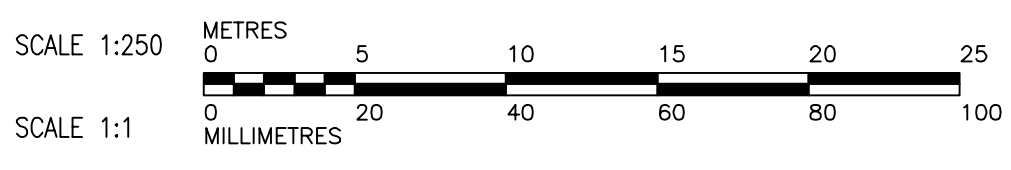
PLOT: 10/04/06 3:02:09 PM

AECOM FILE NAME: 069748050_01-C-1001_RX.dwg Saved By: [Name]



ADDRESS / NATURE OF SERVICE	SIZE	MATERIAL	DISTANCE SC TO PROPERTY	POSITION OF SC (CURB STOP)	POSITION OF CC (CORP)	COMMENTS:
1050 POLSON AV RESIDENTIAL	3/4 in (19 mm)	COPPER	(0.5 m)	Long: (68.0 m) E of EL McPHILLIPS	Long: (0.9 m) W of SC	
1046 POLSON AV RESIDENTIAL	3/4 in (19 mm)	COPPER	(0.5 m)	Long: (82.3 m) E of EL McPHILLIPS	Long: (0.9 m) E of SC	
1022 POLSON AV RESIDENTIAL	3/4 in (19 mm)	COPPER	(0.5 m)	Long: (18.4 m) W of 2ND HYD E McPHILLIPS	Long: (0.6 m) E of SC	
1123 POLSON AV RESIDENTIAL	3/4 in (19 mm)	COPPER	(0.5 m)	Long: (5.8 m) N of NL POLSON AV	Long: (0.9 m) N of SC	RENEW TO PL
1119 POLSON AV RESIDENTIAL	3/4 in (19 mm)	COPPER	(0.5 m)	Long: (16.5 m) N of NL POLSON AV	Long: (0.9 m) N of SC	RENEW TO PL
1115 POLSON AV RESIDENTIAL	3/4 in (19 mm)	COPPER	(0.5 m)	Long: (29.6 m) N of NL POLSON AV	Long: (1.2 m) N of SC	
1111 POLSON AV RESIDENTIAL	3/4 in (19 mm)	COPPER	(0.5 m)	Long: (38.8 m) W of EL POLSON AV	Long: (1.2 m) N of SC	
1107 POLSON AV RESIDENTIAL	3/4 in (19 mm)	COPPER	(0.5 m)	Long: (46.9 m) W of EL POLSON AV	Long: OPP of SC	
1103 POLSON AV RESIDENTIAL	3/4 in (19 mm)	COPPER	(0.5 m)	Long: (0.3 m) E of 1ST HYD E McPHILLIPS	Long: OPP of SC	
1099 POLSON AV RESIDENTIAL	3/4 in (19 mm)	COPPER	(0.5 m)	Long: (14.9 m) E of 1ST HYD E McPHILLIPS	Long: (2.1 m) W of SC	RENEW TO PL
1095 POLSON AV RESIDENTIAL	3/4 in (19 mm)	COPPER	(0.5 m)	Long: (26.8 m) E of 1ST HYD E McPHILLIPS	Long: (1.5 m) W of SC	
1091 POLSON AV RESIDENTIAL	3/4 in (19 mm)	COPPER	(0.5 m)	Long: (41.3 m) E of 1ST HYD E McPHILLIPS	Long: (0.9 m) W of SC	
1087 POLSON AV RESIDENTIAL	3/4 in (19 mm)	COPPER	(0.5 m)	Long: (1.2 m) E of WL HOUSE	Long: (1.2 m) W of SC	
1083 POLSON AV RESIDENTIAL	3/4 in (19 mm)	COPPER	(0.3 m)	Long: (34.1 m) E of 1ST HYD E McPHILLIPS	Long: (0.3 m) E of SC	
1079 POLSON AV RESIDENTIAL	3/4 in (19 mm)	COPPER	(0.3 m)	Long: (41.5 m) E of 1ST HYD E McPHILLIPS	Long: (0.8 m) N of SC	
1075 POLSON AV RESIDENTIAL	3/4 in (19 mm)	COPPER	(0.3 m)	Long: (33.2 m) N of NL POLSON AV	Long: (0.8 m) N of SC	
1071 POLSON AV RESIDENTIAL	3/4 in (19 mm)	COPPER	(0.3 m)	Long: (25.0 m) N of NL POLSON AV	Long: (0.8 m) N of SC	
1067 POLSON AV RESIDENTIAL	3/4 in (19 mm)	COPPER	(0.3 m)	Long: (11.3 m) N of NL POLSON AV	Long: (0.3 m) S of NL HOUSE	

- CONSTRUCTION NOTES:**
1. EXPOSE WATERMAIN CONNECTIONS AND CONFIRM INVERTS PRIOR TO CONSTRUCTION
 2. INSTALL WATERMAIN BY TRENCHLESS METHODS.
 3. ALL MATERIALS SHALL CONFORM TO THE CITY OF WINNIPEG STANDARD CONSTRUCTION SPECIFICATIONS.
 4. MINIMUM COVER TO TOP OF PROPOSED WATERMAIN SHALL BE 2.5m FROM STREET CENTERLINE.
 5. INSTALL ALL HYDRANTS WITH FLANGE ELEVATION 50mm TO 150mm ABOVE FINISHED GRADE.
 6. REPLACE ALL EXISTING LEAD SERVICES FROM THE PROPOSED WATERMAIN TO PROPERTY LINE.
 7. NOTIFY ALL AFFECTED RESIDENTS AND BUSINESSES 24 HOURS IN ADVANCE OF ANY WATER SHUTDOWN OR DISRUPTION OF SERVICE.
 8. LOCATION OF WATER SERVICES SHOWN ON DRAWINGS ARE APPROXIMATE. THE CONTRACTOR SHALL FIELD LOCATE ALL WATER SERVICES PRIOR TO CONSTRUCTION.
 9. BACKFILL UNDER OR WITHIN 1.0m OF PAVEMENTS, INCLUDING SIDEWALKS SHALL BE CLASS 3 BACKFILL EXCEPT AS NOTED. BACKFILL IN BOULEVARDS SHALL BE CLASS 5 BACKFILL.

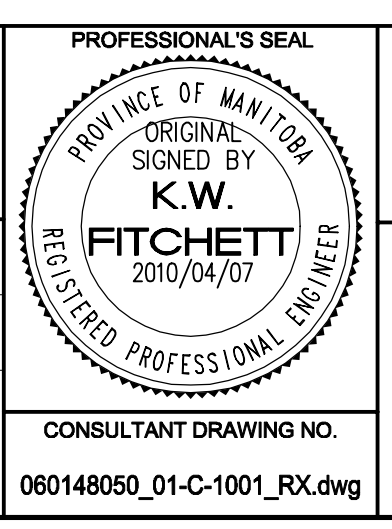


WARNING
 IF POWER EQUIPMENT OR EXPLOSIVES ARE TO BE USED FOR EXCAVATION ON THIS PROJECT, THE CONTRACTOR MUST:
 1) NOTIFY THE GAS COMPANY OF THE PROPOSED LOCATION OF EXCAVATION.
 2) TAKE PRECAUTION TO AVOID DAMAGE TO GAS COMPANY INSTALLATIONS.
 SEE PROVINCIAL REGULATION 140/92 FOR DETAILS.



METRIC
 WHOLE NUMBERS INDICATE MILLIMETRES
 ЦЕЛЫЕ ЧИСЛА УКАЗЫВАЮТ МИЛЛИМЕТРЫ

DESIGNED BY	GSK	CHECKED BY	GSK
DRAWN BY	ADL	APPROVED BY	KWF
HOR. SCALE	1:250	RELEASED FOR CONSTRUCTION	K. ZUREK
VERT. SCALE	1:50		
DATE	10/04/01	DATE	10/04/07



THE CITY OF WINNIPEG
WATER AND WASTE DEPARTMENT

2010 WATERMAIN RENEWALS CONTRACT 9

POLSON AVENUE
FIRST BAY EAST OF McPHILLIPS STREET

SHEET 1 OF 8
 CITY DRAWING NUMBER
D-12005

EXISTING	LEGEND - PLAN	NEW	EXISTING	LEGEND - PLAN	NEW	EXISTING	LEGEND - PROFILE	NEW
150 WM	WATERMAIN	150 WM	150 WM	WATERMAIN	150 WM	300 LDS	LAND DRAINAGE SEWER	300 LDS
300 LDS	LAND DRAINAGE SEWER	250 WWS	250 WWS	WASTE WATER SEWER	250 WWS	MANHOLE	MANHOLE	MANHOLE
CATCH BASIN	CATCH BASIN	CULVERT	CULVERT	PIPE ABANDONMENTS	PIPE ABANDONMENTS	SURVEY BAR	SURVEY BAR	SURVEY BAR
HYDRANT	HYDRANT	VALVE	VALVE	REDUCER	REDUCER	COUPLING	COUPLING	COUPLING
ANODE	ANODE	MTS	MTS	GAS	GAS	TESTHOLE	TESTHOLE	TESTHOLE
LAMP STANDARD	LAMP STANDARD	TREE	TREE					

LOCATION APPROVED
 UNDERGROUND STRUCTURES

SUPR. U/G STRUCTURES DATE COMMITTEE

NOTE: LOCATION OF UNDERGROUND STRUCTURES AS SHOWN ARE BASED ON THE BEST INFORMATION AVAILABLE. BUT NO GUARANTEE IS GIVEN THAT ALL EXISTING UTILITIES ARE SHOWN OR THAT THE GIVEN LOCATIONS ARE EXACT. CONFIRMATION OF EXISTENCE AND EXACT LOCATION OF ALL SERVICES MUST BE OBTAINED FROM THE INDIVIDUAL UTILITIES BEFORE PROCEEDING WITH CONSTRUCTION.

BM	25-051	88R510 - In median of Inkster Blvd. @ Wignton St., Top of 0.6m dia. x 2.4m iron pipe, 5.5 W. of C.L. asphalt Pav't Wignton St. produced from the N. & 8.4m N. of C.L. asphalt Pav't of E. bound traffic lanes of Inkster Blvd.	ELEV	232.073m
NO.	REVISIONS	YYMMDD	BY	