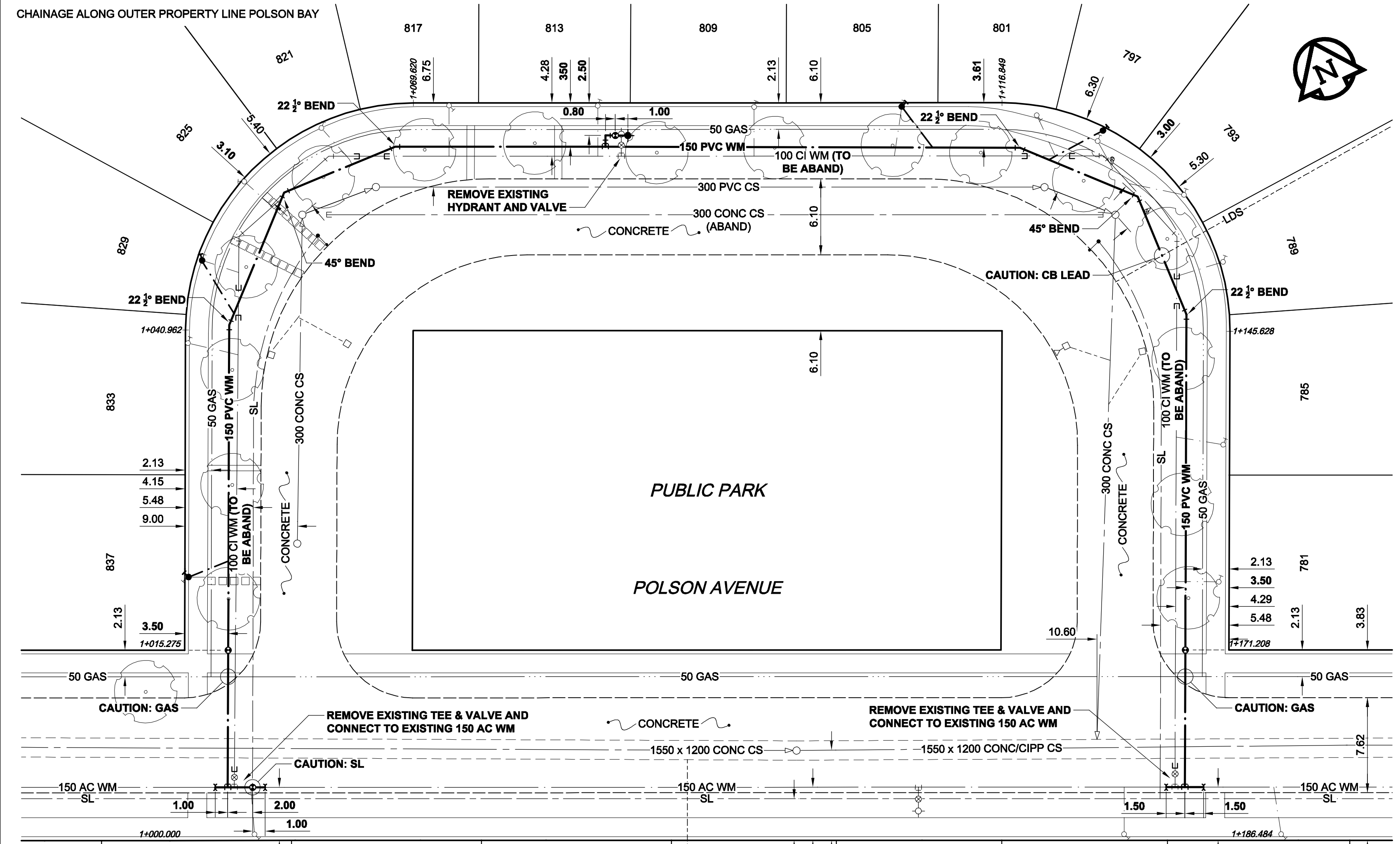
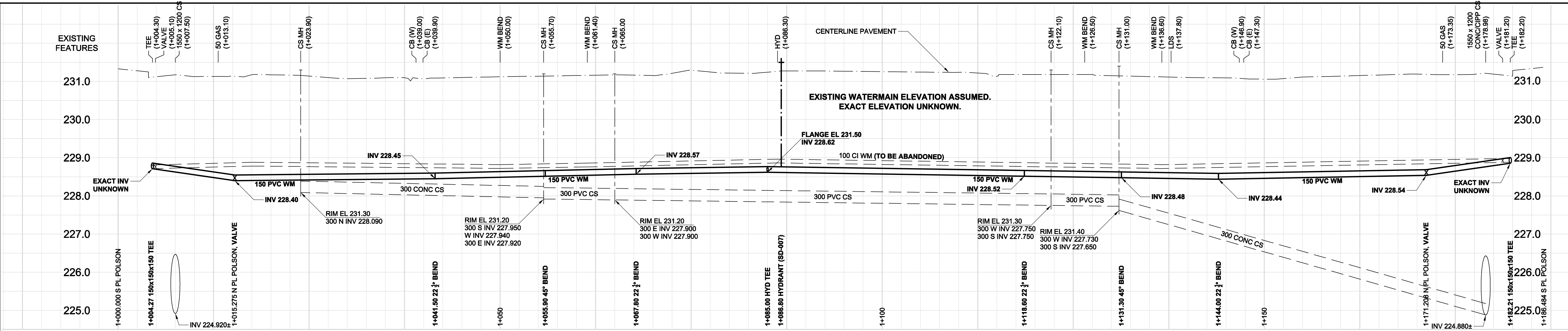


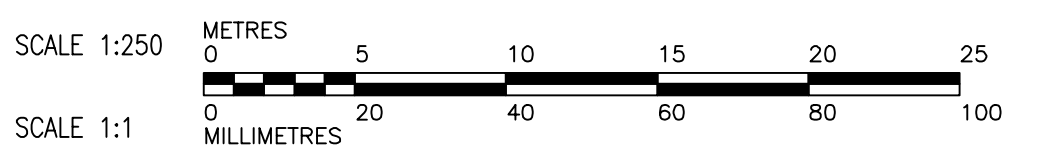
D SIZE 22" x 34" (559mm x 864mm)

PLOT: 10/04/06 3:05:23 PM

AECOM FILE NAME: 069748950_01-C-1002_RX.dwg Saved By: [Name]



ADDRESS / NATURE OF SERVICE	SIZE	MATERIAL	DISTANCE SC TO PROPERTY	POSITION OF SC (CURB STOP)	POSITION OF CC (CORP)	COMMENTS:
812 POLSON AV RESIDENTIAL	3/4 in (19 mm)	COPPER	(0.5 m)	Long: (63.3 m) W of EL HOUSE Short: (0.5 m) W of EL HOUSE	Long: (0.3 m) W of SC	
792 POLSON AV RESIDENTIAL	3/4 in (19 mm)	COPPER	(0.5 m)	Long: (16.5 m) E of EL HOUSE Short: (0.8 m) W of EL HOUSE	Long: OPP of SC	
788 POLSON AV RESIDENTIAL	3/4 in (19 mm)	COPPER	(0.5 m)	Long: (29.1 m) E of EL HOUSE Short: (4.3 m) W of EL HOUSE	Long: OPP of SC	
837 POLSON AV RESIDENTIAL	3/4 in (19 mm)	COPPER	(0.5 m)	Long: (3.4 m) N of EL POLSON Short: (2.0 m) S of EL HOUSE	Long: OPP of SC	RENEW TO PL
833 POLSON AV RESIDENTIAL	3/4 in (19 mm)	COPPER	(0.5 m)	Long: (24.1 m) N of EL POLSON Short: (1.5 m) S of EL HOUSE	Long: OPP of SC	
829 POLSON AV RESIDENTIAL	3/4 in (19 mm)	COPPER	(0.5 m)	Long: (31.4 m) N of EL POLSON Short: (2.0 m) S of EL HOUSE	Long: OPP of SC	RENEW TO PL
825 POLSON AV RESIDENTIAL	3/4 in (19 mm)	COPPER	(0.5 m)	Long: (38.6 m) N of EL POLSON Short: (4.7 m) W of EL HOUSE	Long: OPP of SC	
821 POLSON AV RESIDENTIAL	3/4 in (19 mm)	COPPER	(0.5 m)	Long: (48.5 m) W of EL 1ST HYD W SINCLAIR Short: (4.3 m) E of WL HOUSE	Long: (0.9 m) E of SC	
817 POLSON AV RESIDENTIAL	3/4 in (19 mm)	COPPER	(0.5 m)	Long: (38.7 m) W of EL 1ST HYD W SINCLAIR Short: (0.6 m) W of EL HOUSE	Long: OPP of SC	
813 POLSON AV RESIDENTIAL	3/4 in (19 mm)	COPPER	(0.5 m)	Long: (26.5 m) E of EL HOUSE Short: (0.9 m) W of EL HOUSE	Long: OPP of SC	
809 POLSON AV RESIDENTIAL	3/4 in (19 mm)	COPPER	(0.5 m)	Long: (10.7 m) E of EL HYD COB POLSON Short: (1.2 m) W of EL HOUSE	Long: OPP of SC	
805 POLSON AV RESIDENTIAL	3/4 in (19 mm)	COPPER	(0.5 m)	Long: (2.1 m) W of EL 1ST HYD W SINCLAIR Short: (1.5 m) W of EL HOUSE	Long: OPP of SC	RENEW TO PL
801 POLSON AV RESIDENTIAL	3/4 in (19 mm)	COPPER	(0.5 m)	Long: (8.8 m) E of EL 1ST HYD W SINCLAIR Short: (1.5 m) W of EL HOUSE	Long: OPP of SC	TAPPED OPP SIDE MAIN
797 POLSON AV RESIDENTIAL	3/4 in (19 mm)	COPPER	(0.5 m)	Long: (1.5 m) W of EL HOUSE Short: (3.0 m) E of WL HOUSE	Long: OPP of SC	RENEW TO PL
793 POLSON AV RESIDENTIAL	3/4 in (19 mm)	COPPER	(0.5 m)	Long: (37.3 m) N of EL POLSON AV Short: (4.7 m) E of WL HOUSE	Long: OPP of SC	MAIN TAPPED OPP SIDE
789 POLSON AV RESIDENTIAL	3/4 in (19 mm)	COPPER	(0.5 m)	Long: (48.5 m) N of EL POLSON AV Short: (4.3 m) N of EL HOUSE	Long: OPP of SC	
785 POLSON AV RESIDENTIAL	3/4 in (19 mm)	COPPER	(0.5 m)	Long: (16.9 m) N of EL POLSON AV Short: (0.9 m) N of EL HOUSE	Long: OPP of SC	
781 POLSON AV RESIDENTIAL	3/4 in (19 mm)	COPPER	(0.5 m)	Long: (6.8 m) N of EL POLSON AV Short: (3.7 m) N of EL HOUSE	Long: OPP of SC	



WARNING
IF POWER EQUIPMENT OR EXPLOSIVES ARE TO BE USED FOR EXCAVATION ON THIS PROJECT, THE CONTRACTOR MUST:
1) NOTIFY THE GAS COMPANY OF THE PROPOSED LOCATION OF EXCAVATION.
2) TAKE PRECAUTION TO AVOID DAMAGE TO GAS COMPANY INSTALLATIONS.
SEE PROVINCIAL REGULATION 140/92 FOR DETAILS.

APEGM
Certificate of Authorization
AECOM Canada Ltd.
No. 4671 Date: 2010/04/07

- CONSTRUCTION NOTES:**
- EXPOSE WATERMAIN CONNECTIONS AND CONFIRM INVERTS PRIOR TO CONSTRUCTION
 - INSTALL WATERMAIN BY TRENCHLESS METHODS.
 - ALL MATERIALS SHALL CONFORM TO THE CITY OF WINNIPEG STANDARD CONSTRUCTION SPECIFICATIONS.
 - MINIMUM COVER TO TOP OF PROPOSED WATERMAIN SHALL BE 2.5m FROM STREET CENTERLINE.
 - INSTALL ALL HYDRANTS WITH FLANGE ELEVATION 50mm TO 150mm ABOVE FINISHED GRADE.
 - REPLACE ALL EXISTING LEAD SERVICES FROM THE PROPOSED WATERMAIN TO PROPERTY LINE.
 - NOTIFY ALL AFFECTED RESIDENTS AND BUSINESSES 24 HOURS IN ADVANCE OF ANY WATER SHUTDOWN OR DISRUPTION OF SERVICE.
 - LOCATION OF WATER SERVICES SHOWN ON DRAWINGS ARE APPROXIMATE. THE CONTRACTOR SHALL FIELD LOCATE ALL WATER SERVICES PRIOR TO CONSTRUCTION.
 - BACKFILL UNDER OR WITHIN 1.0m OF PAVEMENTS, INCLUDING SIDEWALKS SHALL BE CLASS 3 BACKFILL EXCEPT AS NOTED. BACKFILL IN BOULEVARDS SHALL BE CLASS 5 BACKFILL. BACKFILL UNDER POLSON AVENUE PAVEMENT SHALL BE CLASS 2.

EXISTING	LEGEND - PLAN	NEW	EXISTING	LEGEND - PLAN	NEW	EXISTING	LEGEND - PROFILE	NEW
150 WM	WATERMAIN	150 WM	CURB STOP	REDUCER	150 WM	WATERMAIN	WATERMAIN	150 WM
300 LDS	HYDRANT	300 LDS	REDUCER	COUPLING	300 LDS	WATERMAIN	HYDRANT	300 LDS
250 WWS	VALVE	250 WWS	ANODE	COUPLING	250 WWS	WATERMAIN	VALVE	250 WWS
	LAND DRAINAGE SEWER		HYDRO	COUPLING		WATERMAIN	LAND DRAINAGE SEWER	
	WASTE WATER SEWER		MTS	COUPLING		WATERMAIN	WASTE WATER SEWER	
	MANHOLE		GAS	COUPLING		WATERMAIN	PAVEMENT CROWN	
	CATCH BASIN		TESTHOLE	COUPLING		WATERMAIN	N/W PROPERTY LINE	
	CURB INLET		LAMP STANDARD	COUPLING		WATERMAIN	S/E PROPERTY LINE	
	CULVERT		TREE	COUPLING		WATERMAIN	N/W GUTTER	
	PIPE ABANDONMENTS			COUPLING		WATERMAIN	S/E GUTTER	
	SURVEY BAR			COUPLING		WATERMAIN		

LOCATION APPROVED UNDERGROUND STRUCTURES
SUPR. U/G STRUCTURES DATE COMMITTEE
NOTE: LOCATION OF UNDERGROUND STRUCTURES AS SHOWN ARE BASED ON THE BEST INFORMATION AVAILABLE. BUT NO GUARANTEE IS GIVEN THAT ALL EXISTING UTILITIES ARE SHOWN OR THAT THE GIVEN LOCATIONS ARE EXACT. CONFIRMATION OF EXISTENCE AND EXACT LOCATION OF ALL SERVICES MUST BE OBTAINED FROM THE INDIVIDUAL UTILITIES BEFORE PROCEEDING WITH CONSTRUCTION.

NO.	REVISIONS	DATE	BY
0	ISSUED FOR TENDER	10/04/07	JP
A	ISSUED FOR REVIEW	10/04/01	ADL

AECOM
DESIGNED BY: GSK
DRAWN BY: ADL
HOR. SCALE: 1:250
VERT. SCALE: 1:50
DATE: 10/04/01

CHECKED BY: GSK
APPROVED BY: KWF
RELEASED FOR CONSTRUCTION: K. ZUREK
DATE: 10/04/07

FITCHETT
PROFESSIONAL SEAL
REGISTERED PROFESSIONAL ENGINEER
CONSULTANT DRAWING NO. 060148050_01-C-1002_RX.dwg

THE CITY OF WINNIPEG
Winnipeg
2010 WATERMAIN RENEWALS CONTRACT 9
POLSON AVENUE
FIRST BAY WEST OF SINCLAIR STREET

SHEET 2 OF 8
CITY DRAWING NUMBER
D-12006
REV 0