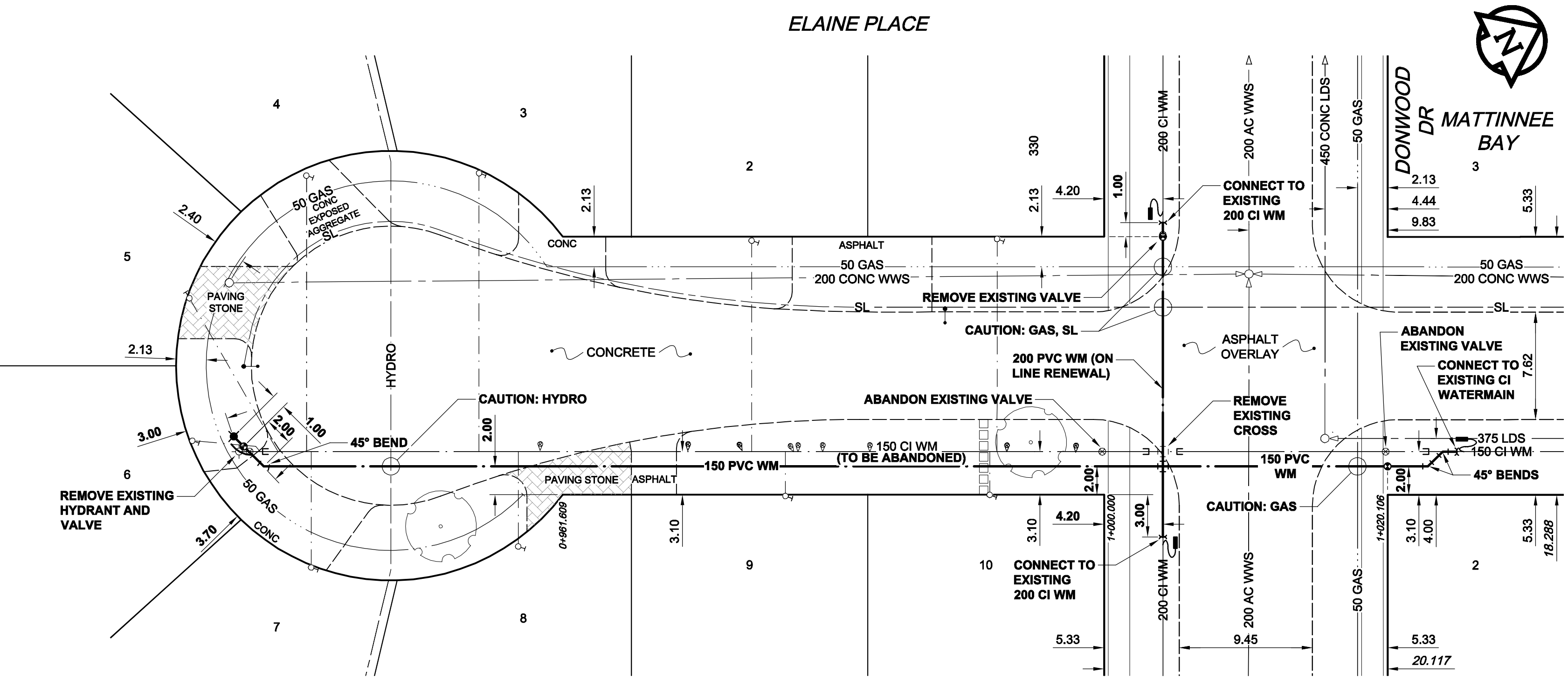
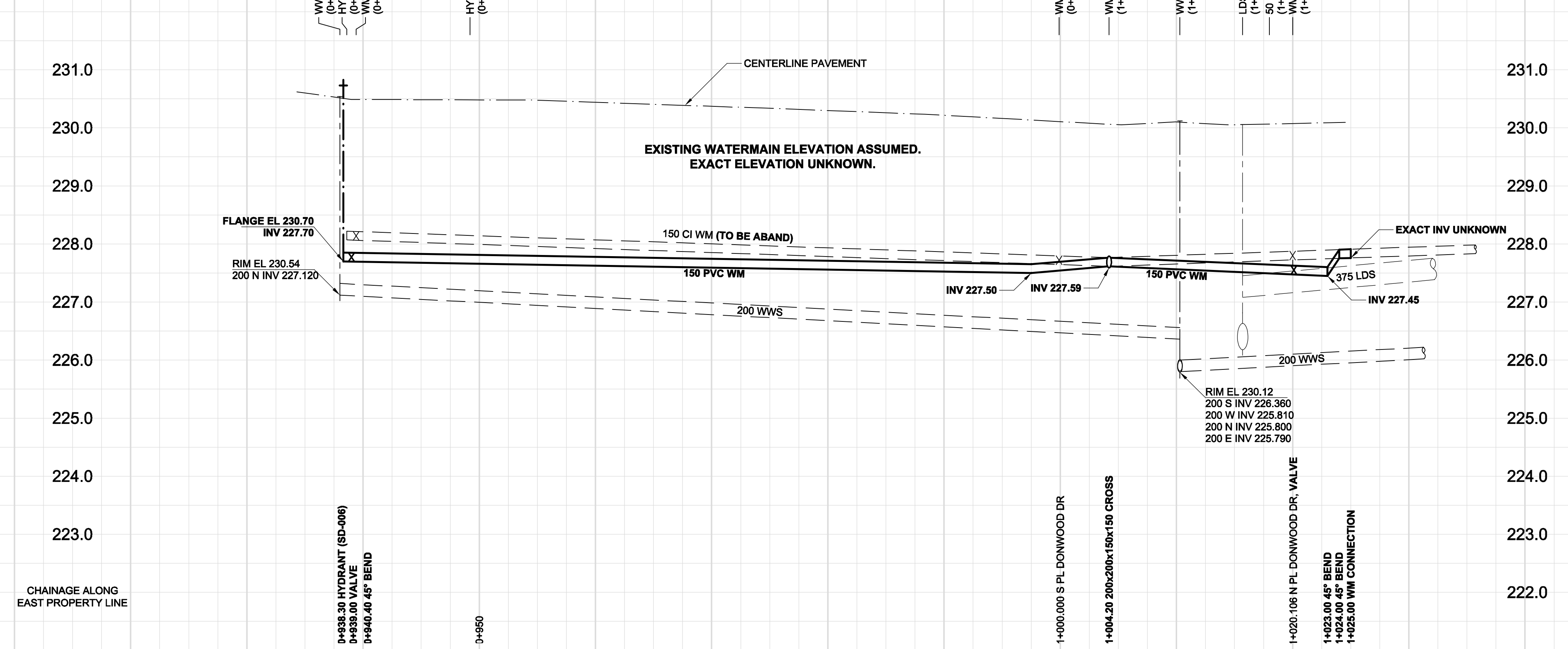


D SIZE 22" x 34" (559mm x 864mm) PLOT: 10/04/05 1:44:42 PM AECOM FILE NAME: 060148050\_01-C-1005\_RX.dwg Saved By: [REDACTED]

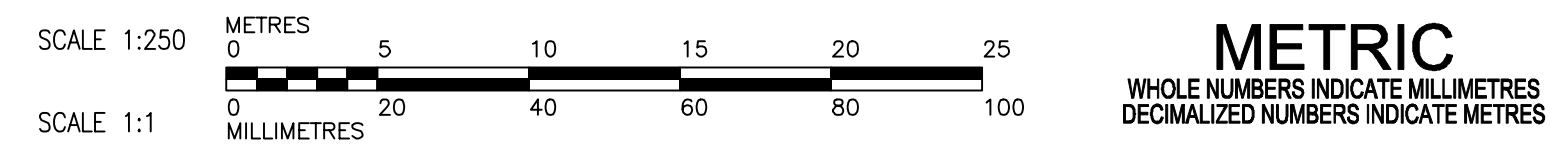
EXISTING FEATURES



ADDRESS / NATURE OF SERVICE	SIZE	MATERIAL	DISTANCE SC TO PROPERTY	POSITION OF SC (CURB STOP)	POSITION OF CC (CORP)	COMMENTS:
330 DOWNWOOD DR RESIDENTIAL	3/4 in (19 mm)	COPPER	(7.9 m)	Long: (8.1 m) Short: (4.1 m)	of HOUSE	
10 ELAINE PL RESIDENTIAL	3/4 in (19 mm)	COPPER	(0.3 m)	Long: Short: (5.5 m)	of N HOUSE COR	
9 ELAINE PL RESIDENTIAL	3/4 in (19 mm)	COPPER	(0.3 m)	Long: Short: (4.6 m)	of N HOUSE COR	
8 ELAINE PL RESIDENTIAL	3/4 in (19 mm)	COPPER	(0.3 m)	Long: Short: (9.8 m)	of S H/L	
7 ELAINE PL RESIDENTIAL	3/4 in (19 mm)	COPPER	(0.3 m)	Long: Short: (5.2 m)	of W LINE	
6 ELAINE PL RESIDENTIAL	3/4 in (19 mm)	COPPER	(0.3 m)	Long: Short: (5.1 m)	of W LINE	
5 ELAINE PL RESIDENTIAL	3/4 in (19 mm)	COPPER	(0.3 m)	Long: Short: (3.4 m)	of N LINE	
4 ELAINE PL RESIDENTIAL	3/4 in (19 mm)	COPPER	(0.3 m)	Long: Short: (6.4 m)	of N LINE	
3 ELAINE PL RESIDENTIAL	3/4 in (19 mm)	COPPER	(0.3 m)	Long: Short: (7.0 m)	of N LINE	
2 ELAINE PL RESIDENTIAL	3/4 in (19 mm)	COPPER	(0.3 m)	Long: Short: (7.3 m)	of N LINE	

- CONSTRUCTION NOTES:**
- EXPOSE WATERMAIN CONNECTIONS AND CONFIRM INVERTS PRIOR TO CONSTRUCTION
  - INSTALL WATERMAIN BY TRENCHLESS METHODS.
  - ALL MATERIALS SHALL CONFORM TO THE CITY OF WINNIPEG STANDARD CONSTRUCTION SPECIFICATIONS.
  - MINIMUM COVER TO TOP OF PROPOSED WATERMAIN SHALL BE 2.5m FROM STREET CENTERLINE.
  - INSTALL ALL HYDRANTS WITH FLANGE ELEVATION 50mm TO 150mm ABOVE FINISHED GRADE.
  - REPLACE ALL EXISTING LEAD SERVICES FROM THE PROPOSED WATERMAIN TO PROPERTY LINE.
  - NOTIFY ALL AFFECTED RESIDENTS AND BUSINESSES 24 HOURS IN ADVANCE OF ANY WATER SHUTDOWN OR DISRUPTION OF SERVICE.
  - LOCATION OF WATER SERVICES SHOWN ON DRAWINGS ARE APPROXIMATE. THE CONTRACTOR SHALL FIELD LOCATE ALL WATER SERVICES PRIOR TO CONSTRUCTION.
  - BACKFILL UNDER OR WITHIN 1.0m OF PAVEMENTS, INCLUDING SIDEWALKS SHALL BE CLASS 3 BACKFILL EXCEPT AS NOTED. BACKFILL IN BOULEVARDS SHALL BE CLASS 5 BACKFILL.

**WARNING**  
 IF POWER EQUIPMENT OR EXPLOSIVES ARE TO BE USED FOR EXCAVATION ON THIS PROJECT, THE CONTRACTOR MUST NOTIFY THE GAS COMPANY OF THE PROPOSED LOCATION OF EXCAVATION. TAKE PRECAUTION TO AVOID DAMAGE TO GAS COMPANY INSTALLATIONS. SEE PROVINCIAL REGULATION 140/92 FOR DETAILS

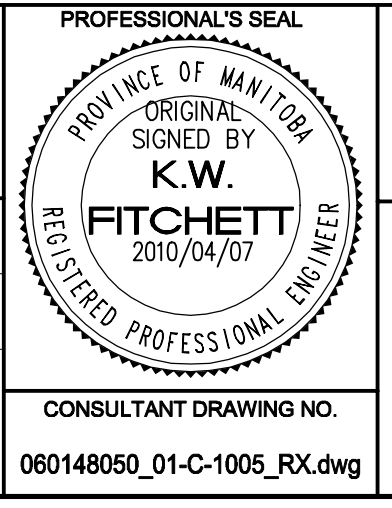


EXISTING	LEGEND - PLAN	NEW	EXISTING	LEGEND - PLAN	NEW	EXISTING	LEGEND - PROFILE	NEW
150 WM	WATERMAIN	150 WM	CURB STOP	150 WM	WATERMAIN	150 WM	WATERMAIN	150 WM
300 LDS	HYDRANT VALVE	300 LDS	REDUCER COUPLING	300 LDS	HYDRANT VALVE	300 LDS	HYDRANT VALVE	300 LDS
250 WWS	LAND DRAINAGE SEWER	250 WWS	ANODE	250 WWS	LAND DRAINAGE SEWER	250 WWS	LAND DRAINAGE SEWER	250 WWS
○	WASTE WATER SEWER	○	HYDRO	○	WASTE WATER SEWER	○	WASTE WATER SEWER	○
○	MANHOLE	○	MTS	○	MANHOLE	○	MANHOLE	○
□	CATCH BASIN	□	GAS	□	CATCH BASIN	□	CATCH BASIN	□
△	CURB INLET	△	TESTHOLE	△	CURB INLET	△	CURB INLET	△
▭	CULVERT	▭	LAMP STANDARD	▭	CULVERT	▭	CULVERT	▭
—	PIPE ABANDONMENTS	—	TREE	—	PIPE ABANDONMENTS	—	PIPE ABANDONMENTS	—
+	SURVEY BAR	+		+	SURVEY BAR	+	SURVEY BAR	+

**LOCATION APPROVED UNDERGROUND STRUCTURES**  
 SUPR. U/G STRUCTURES DATE COMMITTEE  
 NOTE: LOCATION OF UNDERGROUND STRUCTURES AS SHOWN ARE BASED ON THE BEST INFORMATION AVAILABLE. BUT NO GUARANTEE IS GIVEN THAT ALL EXISTING UTILITIES ARE SHOWN OR THAT THE GIVEN LOCATIONS ARE EXACT. CONFIRMATION OF EXISTENCE AND EXACT LOCATION OF ALL SERVICES MUST BE OBTAINED FROM THE INDIVIDUAL UTILITIES BEFORE PROCEEDING WITH CONSTRUCTION.

NO.	REVISIONS	DATE	BY
0	ISSUED FOR TENDER	10/04/07	JP
A	ISSUED FOR REVIEW	10/04/01	ADL
		YYMMDD	

DESIGNED BY	GSK	CHECKED BY	GSK
DRAWN BY	ADL	APPROVED BY	KWF
HOR. SCALE	1:250	RELEASED FOR CONSTRUCTION	K. ZUREK
VERT. SCALE	1:50		
DATE	10/04/01		



**THE CITY OF WINNIPEG WATER AND WASTE DEPARTMENT**

**2010 WATERMAIN RENEWALS CONTRACT 9**

**ELAINE PLACE**

SHEET 5 OF 8  
 CITY DRAWING NUMBER  
**D-12009** REV 0

CONSULTANT DRAWING NO. 060148050\_01-C-1005\_RX.dwg

BID OPPORTUNITY NO. 212-2010