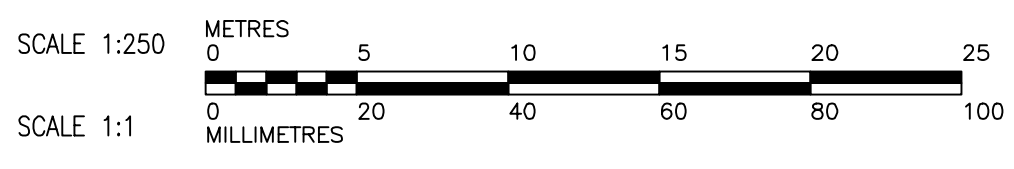
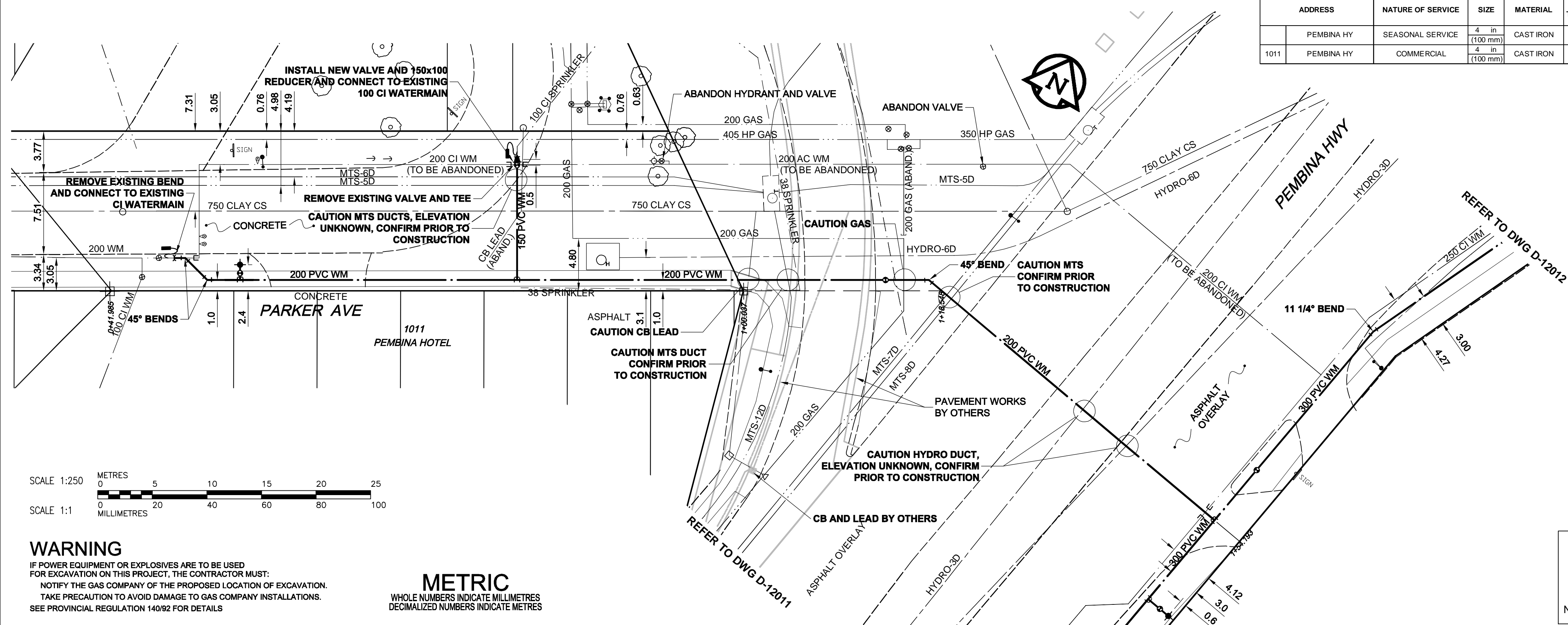


ADDRESS	NATURE OF SERVICE	SIZE	MATERIAL	DISTANCE SC TO PROPERTY	POSITION OF SC (curb stop)		POSITION OF CC (corp)		COMMENTS:
1011 PEMBINA HY	SEASONAL SERVICE	4 in (100 mm)	CAST IRON	(2.4 m)	Long: (12.5 m) W of	Short: of	Long: (12.5 m) W of	Short: of	1ST HYDRANT WEST OF PEMBINA IRRIGATION SERVICE
1011 PEMBINA HY	COMMERCIAL	4 in (100 mm)	CAST IRON	(0.3 m)	Long: (68.3 m) W of	Short: of	Long: (68.3 m) W of	Short: of	1ST HYDRANT W OF PEMBINA



**WARNING**  
IF POWER EQUIPMENT OR EXPLOSIVES ARE TO BE USED FOR EXCAVATION ON THIS PROJECT, THE CONTRACTOR MUST: NOTIFY THE GAS COMPANY OF THE PROPOSED LOCATION OF EXCAVATION. TAKE PRECAUTION TO AVOID DAMAGE TO GAS COMPANY INSTALLATIONS. SEE PROVINCIAL REGULATION 140/92 FOR DETAILS.

**METRIC**  
WHOLE NUMBERS INDICATE MILLIMETRES  
DECIMALIZED NUMBERS INDICATE METRES

- CONSTRUCTION NOTES:**
- EXPOSE WATERMAIN CONNECTIONS AND CONFIRM INVERTS PRIOR TO CONSTRUCTION
  - INSTALL WATERMAIN BY TRENCHLESS METHODS.
  - ALL MATERIALS SHALL CONFORM TO THE CITY OF WINNIPEG STANDARD CONSTRUCTION SPECIFICATIONS.
  - MINIMUM COVER TO TOP OF PROPOSED WATERMAIN SHALL BE 2.5m FROM STREET CENTERLINE.
  - INSTALL ALL HYDRANTS WITH FLANGE ELEVATION 50mm TO 150mm ABOVE FINISHED GRADE.
  - REPLACE ALL EXISTING LEAD SERVICES FROM THE PROPOSED WATERMAIN TO PROPERTY LINE.
  - NOTIFY ALL AFFECTED RESIDENTS AND BUSINESSES 24 HOURS IN ADVANCE OF ANY WATER SHUTDOWN OR DISRUPTION OF SERVICE.
  - LOCATION OF WATER SERVICES SHOWN ON DRAWINGS ARE APPROXIMATE. THE CONTRACTOR SHALL FIELD LOCATE ALL WATER SERVICES PRIOR TO CONSTRUCTION.
  - BACKFILL UNDER OR WITHIN 1.0m OF PAVEMENTS, INCLUDING SIDEWALKS SHALL BE CLASS 3 BACKFILL EXCEPT AS NOTED BELOW. BACKFILL UNDER OR WITHIN 1.0m OF PEMBINA HWY OR JUBILEE AVENUE PAVEMENT SHALL BE CLASS 1 BACKFILL. BACKFILL IN BOULEVARDS SHALL BE CLASS 5 BACKFILL.
  - ALL WATERMAIN PIPE, FITTINGS, AND APPURTENANCES TO HAVE NITRILE GASKETS

**AECOM**  
Certificate of Authorization  
AECOM Canada Ltd.  
No. 4671 Date: 2010/04/07

EXISTING	LEGEND - PLAN	NEW	EXISTING	LEGEND - PLAN	NEW	EXISTING	LEGEND - PROFILE	NEW
150 WM	WATERMAIN	150 WM	○	CURB STOP	+	150 WM	WATERMAIN	+
○	HYDRANT	○	○	REDUCER	+	○	HYDRANT	+
○	VALVE	○	○	COUPLING	+	○	VALVE	+
300 LDS	LAND DRAINAGE SEWER	300 LDS	○	ANODE	+	○	LAND DRAINAGE SEWER	+
250 WWS	WASTE WATER SEWER	250 WWS	○	HYDRO	+	○	WASTE WATER SEWER	+
○	MANHOLE	○	○	MTS	+	○	PAVEMENT CROWN	+
○	CATCH BASIN	○	○	GAS	+	○	N/W PROPERTY LINE	+
○	CURB INLET	○	○	TESTHOLE	+	○	S/E PROPERTY LINE	+
○	CULVERT	○	○	LAMP STANDARD	+	○	N/W GUTTER	+
○	PIPE ABANDONMENTS	○	○	TREE	+	○	S/E GUTTER	+
○	SURVEY BAR	○	○			○		

**LOCATION APPROVED**  
UNDERGROUND STRUCTURES  
SUPR. U/G STRUCTURES DATE COMMITTEE  
**NOTE:** LOCATION OF UNDERGROUND STRUCTURES AS SHOWN ARE BASED ON THE BEST INFORMATION AVAILABLE. BUT NO GUARANTEE IS GIVEN THAT ALL EXISTING UTILITIES ARE SHOWN OR THAT THE GIVEN LOCATIONS ARE EXACT. CONFIRMATION OF EXISTENCE AND EXACT LOCATION OF ALL SERVICES MUST BE OBTAINED FROM THE INDIVIDUAL UTILITIES BEFORE PROCEEDING WITH CONSTRUCTION.

NO.	REVISIONS	DATE	BY
0	ISSUED FOR TENDER	10/04/07	JP
A	ISSUED FOR REVIEW	10/04/01	JP
		YYMMDD	

**AECOM**  
DESIGNED BY GSK  
CHECKED BY GSK  
DRAWN BY JP  
APPROVED BY KWF  
HOR. SCALE 1:250  
VERT. SCALE 1:50  
DATE 10/04/07  
RELEASED FOR CONSTRUCTION  
K. ZUREK  
DATE 10/04/07

PROFESSIONAL'S SEAL  
PROVINCE OF MANITOBA  
ORIGINAL SIGNED BY  
**K.W.**  
2010/04/07  
REGISTERED PROFESSIONAL ENGINEER  
CONSULTANT DRAWING NO.  
060148050\_01-C-1006\_RX.dwg

**THE CITY OF WINNIPEG**  
Winnipeg  
**WATER AND WASTE DEPARTMENT**  
2010 WATERMAIN RENEWALS  
CONTRACT 9  
PARKER AVENUE  
PEMBINA HIGHWAY TO 55m WEST OF PEMBINA HIGHWAY  
SHEET 6 OF 8  
CITY DRAWING NUMBER  
D-12010  
REV 0  
BID OPPORTUNITY NO. 212-2010