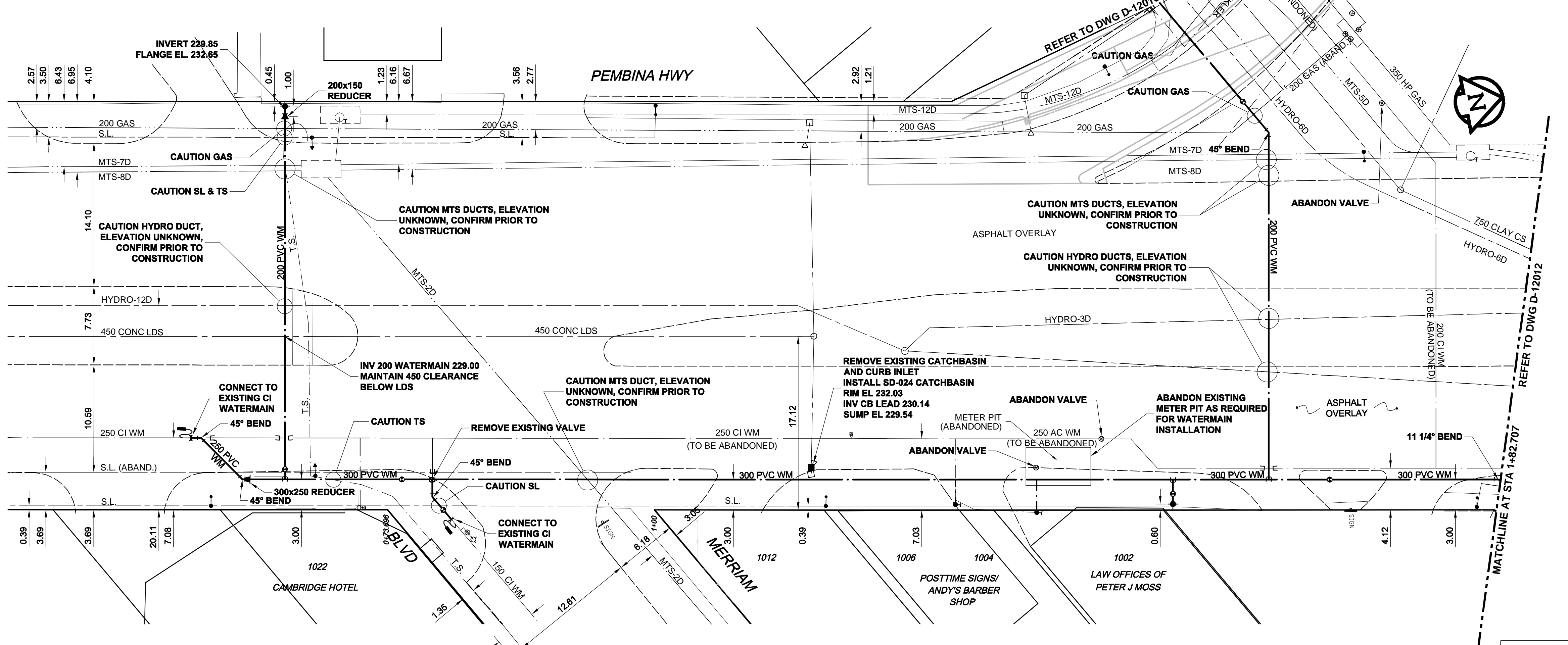
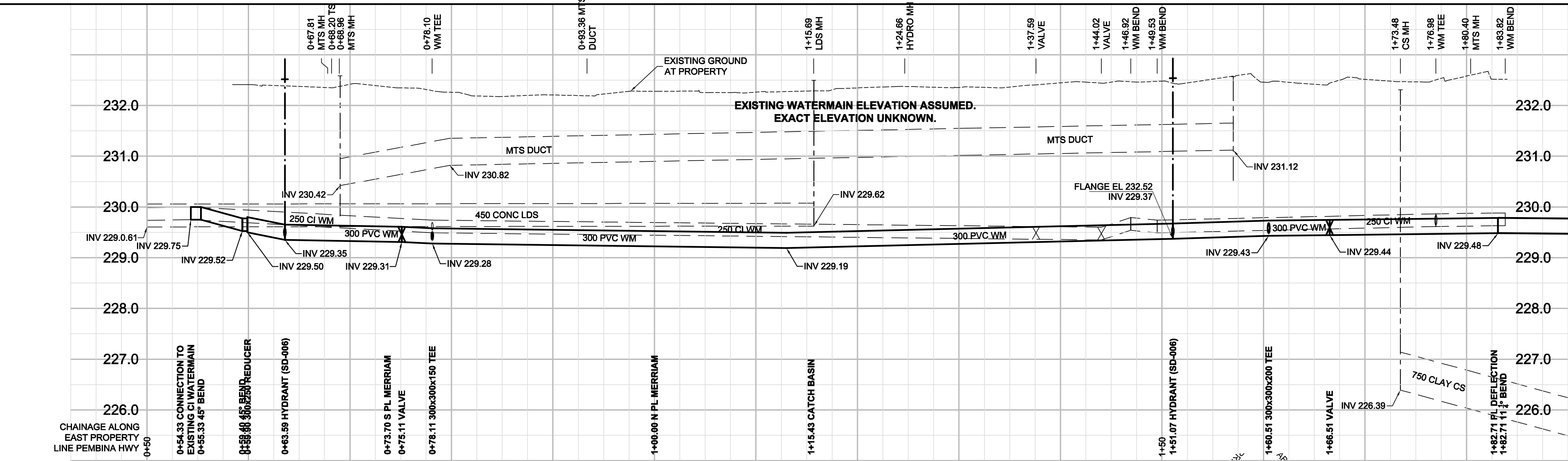


D SIZE 22" x 34" (559mm x 864mm)

PLOT: 10/04/06 11:34:24 AM

AECOM FILE NAME: 0607148050_01-C-1007_RX.dwg Saved By: [Name]

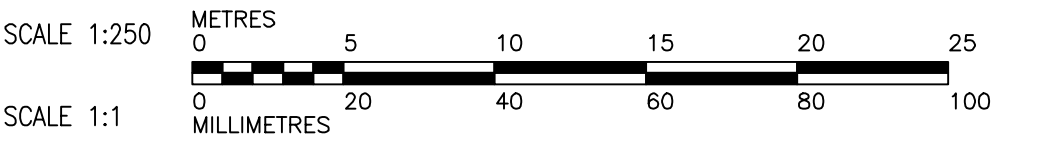


- CONSTRUCTION NOTES:**
1. EXPOSE WATERMAIN CONNECTIONS AND CONFIRM INVERTS PRIOR TO CONSTRUCTION
 2. INSTALL WATERMAIN BY TRENCHLESS METHODS.
 3. ALL MATERIALS SHALL CONFORM TO THE CITY OF WINNIPEG STANDARD CONSTRUCTION SPECIFICATIONS.
 4. MINIMUM COVER TO TOP OF PROPOSED WATERMAIN SHALL BE 2.5m FROM STREET CENTERLINE.
 5. INSTALL ALL HYDRANTS WITH FLANGE ELEVATION 50mm TO 150mm ABOVE FINISHED GRADE.
 6. REPLACE ALL EXISTING LEAD SERVICES FROM THE PROPOSED WATERMAIN TO PROPERTY LINE.
 7. NOTIFY ALL AFFECTED RESIDENTS AND BUSINESSES 24 HOURS IN ADVANCE OF ANY WATER SHUTDOWN OR DISRUPTION OF SERVICE.
 8. LOCATION OF WATER SERVICES SHOWN ON DRAWINGS ARE APPROXIMATE. THE CONTRACTOR SHALL FIELD LOCATE ALL WATER SERVICES PRIOR TO CONSTRUCTION.
 9. BACKFILL UNDER OR WITHIN 1.0m OF PAVEMENTS, INCLUDING SIDEWALKS SHALL BE CLASS 3 BACKFILL EXCEPT AS NOTED BELOW. BACKFILL UNDER OR WITHIN 1.0m OF PEMBINA HWY OR JUBILEE AVENUE PAVEMENT SHALL BE CLASS 1 BACKFILL. BACKFILL IN BOULEVARDS SHALL BE CLASS 5 BACKFILL.
 10. ALL WATERMAIN PIPE, FITTINGS, AND APPURTENANCES TO HAVE NITRILE GASKETS

WARNING
IF POWER EQUIPMENT OR EXPLOSIVES ARE TO BE USED FOR EXCAVATION ON THIS PROJECT, THE CONTRACTOR MUST: NOTIFY THE GAS COMPANY OF THE PROPOSED LOCATION OF EXCAVATION. TAKE PRECAUTION TO AVOID DAMAGE TO GAS COMPANY INSTALLATIONS. SEE PROVINCIAL REGULATION 140/92 FOR DETAILS.

METRIC
WHOLE NUMBERS INDICATE MILLIMETRES
DECIMALIZED NUMBERS INDICATE METRES

ADDRESS	NATURE OF SERVICE	SIZE	MATERIAL	DISTANCE SC TO PROPERTY	POSITION OF SC (curb stop)			POSITION OF CC (corp)			COMMENTS:		
					Long	Short	of	Long	Short	of			
1022 PEMBINA HY	COMMERCIAL	1 in (25 mm)	COPPER	(0.0 m)	Long	(1.7 m)	S	of	Long	OPP	of	225 mm SERVICES 0.15 APART	
1004 PEMBINA HY	COMMERCIAL	3/4 in (19 mm)	COPPER	(0.0 m)	Long	(2.4 m)	N	of	Short	(1.5 m)	S	of	RENEW AS 25mm TO PROPERTY
1002 PEMBINA HY	COMMERCIAL	3/4 in (19 mm)	COPPER	(0.0 m)	Long	(3.0 m)	S	of	Long	CONNECTED TO SERVICE 1004	of	RENEW AS 25mm TO PROPERTY	



EXISTING	LEGEND - PLAN	NEW	EXISTING	LEGEND - PLAN	NEW	EXISTING	LEGEND - PROFILE	NEW
150 WM	WATERMAIN	150 WM	150 WM	WATERMAIN	150 WM	300 LDS	LAND DRAINAGE SEWER	300 LDS
300 LDS	LAND DRAINAGE SEWER	300 LDS	250 WWS	WASTE WATER SEWER	250 WWS	MANHOLE	MANHOLE	MANHOLE
250 WWS	WASTE WATER SEWER	250 WWS	CATCH BASIN	CATCH BASIN	CATCH BASIN	CURB INLET	CURB INLET	CURB INLET
PIPE ABANDONMENTS	PIPE ABANDONMENTS	PIPE ABANDONMENTS	SURVEY BAR	SURVEY BAR	SURVEY BAR	HYDRANT	HYDRANT	HYDRANT
VALVE	VALVE	VALVE	REDUCER	REDUCER	REDUCER	COUPLING	COUPLING	COUPLING
ANODE	ANODE	ANODE	HYDRO	HYDRO	HYDRO	MTS	MTS	MTS
GAS	GAS	GAS	TESTHOLE	TESTHOLE	TESTHOLE	LAMP STANDARD	LAMP STANDARD	LAMP STANDARD
TREE	TREE	TREE	TREE	TREE	TREE	TREE	TREE	TREE

LOCATION APPROVED UNDERGROUND STRUCTURES
SUPR. U/G STRUCTURES DATE COMMITTEE
NOTE: LOCATION OF UNDERGROUND STRUCTURES AS SHOWN ARE BASED ON THE BEST INFORMATION AVAILABLE. BUT NO GUARANTEE IS GIVEN THAT ALL EXISTING UTILITIES ARE SHOWN OR THAT THE GIVEN LOCATIONS ARE EXACT. CONFIRMATION OF EXISTENCE AND EXACT LOCATION OF ALL SERVICES MUST BE OBTAINED FROM THE INDIVIDUAL UTILITIES BEFORE PROCEEDING WITH CONSTRUCTION.

NO.	REVISIONS	DATE	BY
0	ISSUED FOR TENDER	10/04/07	JP
A	ISSUED FOR REVIEW	10/04/01	JP
		YYMMDD	

AECOM
DESIGNED BY: GSK
DRAWN BY: JP
CHECKED BY: GSK
APPROVED BY: KWF
RELEASED FOR CONSTRUCTION: K. ZUREK
DATE: 10/04/07



THE CITY OF WINNIPEG WATER AND WASTE DEPARTMENT
2010 WATERMAIN RENEWALS CONTRACT 9
PEMBINA HIGHWAY
MERRIAM BOULEVARD TO JUBILEE AVENUE

SHEET 7 OF 8
CITY DRAWING NUMBER
D-12011

BID OPPORTUNITY NO. 212-2010