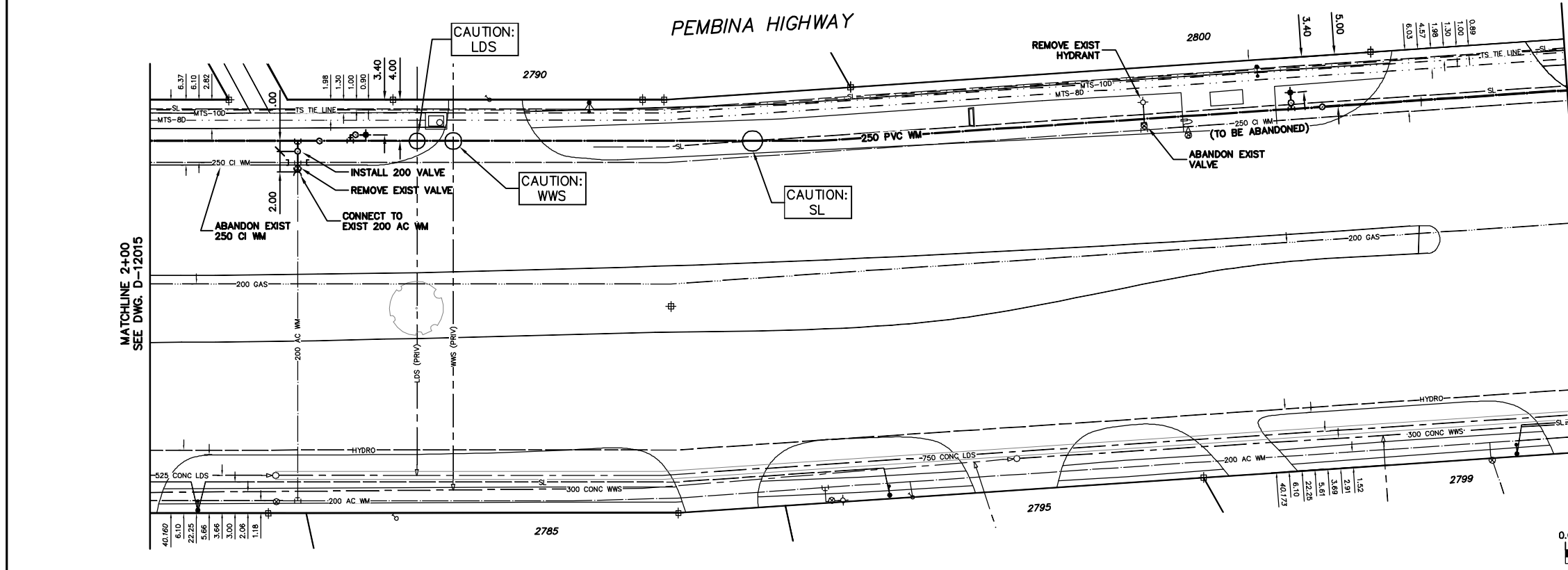


WATER SERVICE INFORMATION

ADDRESS	SIZE(mm) & TYPE (STREET)	SIZE(mm) & TYPE (PROP)	SHORT & LONG MEASUREMENT	CORP. LOCATION
2785 PEMBINA HWY	-	-	5.10 NNL BLDG	-
COMMERCIAL	-	-	244.06 NNL KIRKBRIDGE	-
2790 PEMBINA HWY	-	50 COPPER	OPP NW BLDG CRN	-
COMMERCIAL	-	-	200.14 NNL KILLARNEY	-
2795 PEMBINA HWY	-	-	OPP NTL BLDG	OPP S/C
COMMERCIAL	-	-	195.54 NNL KIRKBRIDGE	-
2799 PEMBINA HWY	25	25	3.75 NNL BLDG	OPP S/C
COMMERCIAL	-	-	139.94 NNL KIRKBRIDGE	-
2800 PEMBINA HWY	-	-	-	-
COMMERCIAL	-	-	-	-

* SERVICES TO BE RENEWED TO R ALL OTHERS TO BE RECONNECTED

NOTE: CHAINAGES SHOWN ARE ALONG E R OF PEMBINA HWY.



- CONSTRUCTION NOTES**
1. EXPOSE EXISTING WATERMAIN & CONFIRM INVERTS PRIOR TO CONSTRUCTION.
 2. LOCATION OF ALL SERVICES TO BE CONFIRMED IN THE FIELD.
 3. INSTALL WATERMAIN BY TRENCHLESS METHODS.
 4. TRENCHES AND EXCAVATIONS WITHIN 1 METRE OF A PAVED AREA INCLUDING SIDEWALKS SHALL BE CLASS 3 BACKFILL.
 5. ALL MATERIALS SHALL CONFORM TO THE CITY OF WINNIPEG STANDARD CONSTRUCTION SPECIFICATIONS.
 6. MINIMUM COVER TO TOP OF WATERMAIN SHALL BE 2.4 m.
 7. REPLACE ALL EXISTING LEAD SERVICES FROM PROPOSED WATERMAIN TO R.
 8. NOTIFY ALL AFFECTED RESIDENTS AND BUSINESSES 24 HOURS IN ADVANCE OF ANY WATER SHUTDOWNS OR DISRUPTION OF SERVICE.

METRIC
WHOLE NUMBERS INDICATE MILLIMETRES
DECIMALIZED NUMBERS INDICATE METRES

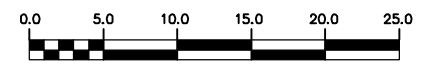
NOTE: ALL VALVES TO BE INSTALLED CLOCKWISE TO CLOSE

WARNING

IF POWER EQUIPMENT OR EXPLOSIVES ARE TO BE USED FOR EXCAVATION ON THIS PROJECT THE CONTRACTOR MUST:

- 1) NOTIFY THE GAS COMPANY OF THE PROPOSED LOCATION OF EXCAVATION.
- 2) TAKE PRECAUTION TO AVOID DAMAGE TO GAS COMPANY INSTALLATIONS.

SEE PROVINCIAL REGULATION 210/72 FOR DETAILS



EXISTING	LEGEND-PLAN	PROPOSED	EXISTING	LEGEND-PLAN	PROPOSED	EXISTING	LEGEND-PROFILE	PROPOSED
○	200 WM	○	SL, HYDRO	○	150 WM	○	WATERMAIN	○
⊕	HYDRANT	⊕	MTS	⊕	HYDRANT	⊕	HYDRANT	⊕
⊙	VALVE	⊙	TRAFFIC SIGNALS	⊙	VALVE	⊙	VALVE	⊙
—	525 LDS	—	GAS	—	50 GAS	—	LAND DRAINAGE SEWER	—
—	LAND DRAINAGE SEWER	—	50 GAS	—	300 LDS	—	WASTEWATER SEWER	—
—	375 WWS	—	SURVEY BAR	—	250 WWS	—	250 WWS	—
○	MANHOLE	○	FENCE	○	PROFILE	○	PROFILE	○
□	CATCH BASIN	□	POLE - HYDRO, MTS	□	GROUND ABOVE PIPE	□	GROUND ABOVE PIPE	□
▽	CURB INLET	▽	CURB STOP	▽	☉ DITCH (NORTH & WEST)	▽	☉ DITCH (NORTH & WEST)	▽
∇	REDUCER	∇	GUY ANCHOR	∇	☉ DITCH (SOUTH & EAST)	∇	☉ DITCH (SOUTH & EAST)	∇
X	COUPLER	X	LIGHT STANDARD	X	☉ GUTTER (NORTH & WEST)	X	☉ GUTTER (NORTH & WEST)	X
⊕	ANODE	⊕	TREE	⊕	☉ GUTTER (SOUTH & EAST)	⊕	☉ GUTTER (SOUTH & EAST)	⊕

LOCATION APPROVED UNDERGROUND STRUCTURES

SUPV. U/G STRUCTURES COMMITTEE DATE

NOTE: LOCATION OF UNDERGROUND STRUCTURES AS SHOWN ARE BASED ON THE BEST INFORMATION AVAILABLE BUT NO GUARANTEE IS GIVEN THAT ALL EXISTING UTILITIES ARE SHOWN OR THAT THE GIVEN LOCATIONS ARE EXACT. CONFIRMATION OF EXISTENCE AND EXACT LOCATION OF ALL SERVICES MUST BE OBTAINED FROM THE INDIVIDUAL UTILITIES BEFORE PROCEEDING WITH CONSTRUCTION.

NO.	REVISIONS	DATE	BY

CITY OF WINNIPEG
WATER AND WASTE
ENGINEERING DIVISION

DESIGNED BY: DB
CHECKED BY: KZ/SC

DRAWN BY: CJH
APPROVED BY: KZ

HOR. SCALE: 1:250
VERTICAL: 1:50

DATE: 2010 03 25

ENGINEER'S SEAL

ORIGINAL MYLAR SIGNED BY: K.R. ZUREK
DATE: 10/03/25

BID OPPORTUNITY 216-2010
FILENAME: D-12016.dwg
PLOT DATE: 2010 03 25

THE CITY OF WINNIPEG
WATER AND WASTE DEPARTMENT

2010 WATERMAIN RENEWALS
CONTRACT 2
PEMBINA HIGHWAY
100 S OF GREENCREST AVENUE TO
100 N OF KILLARNEY AVENUE

SHEET 4 OF 9
CITY DRAWING NUMBER
D-12016