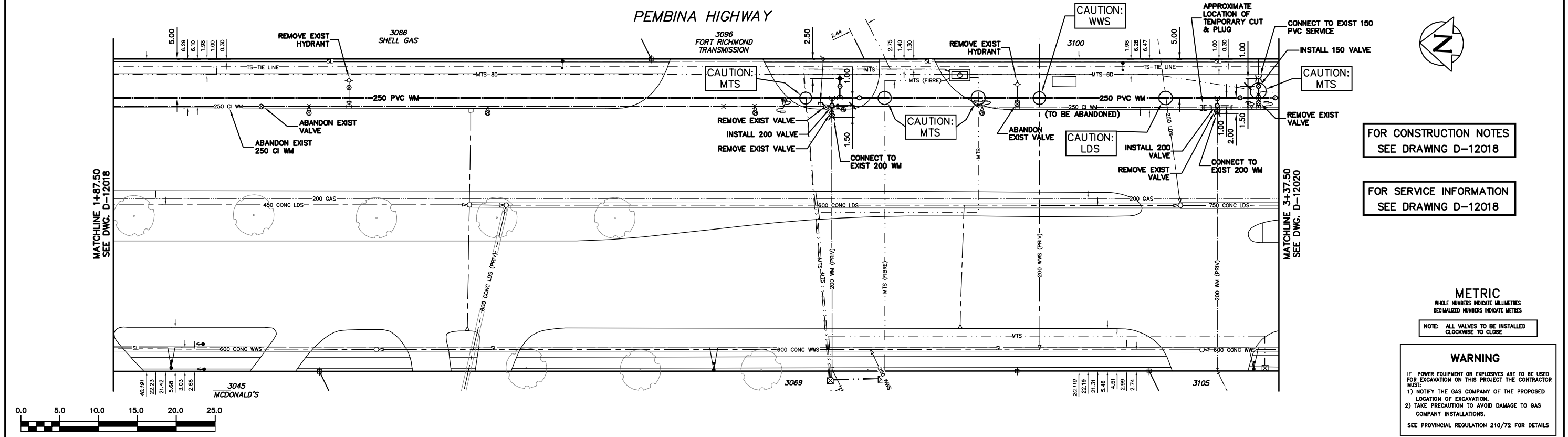


NOTE: CHAINAGES SHOWN ARE ALONG E.P. OF PEMBINA HWY.

NOTE: WATER SERVICE TO 3100 PEMBINA HWY SHALL NOT BE FED BY TEMPORARY HOSE LINE. CONTRACTOR TO TEMPORARILY CUT & PLUG EXIST MAIN AT APPROXIMATE LOCATIONS AS SHOWN ON DRAWING TO MAINTAIN SERVICE. SHUT DOWNS SHALL BE KEPT TO A MINIMUM.



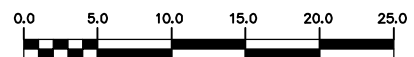
FOR CONSTRUCTION NOTES SEE DRAWING D-12018

FOR SERVICE INFORMATION SEE DRAWING D-12018

METRIC
WHOLE NUMBERS INDICATE MILLIMETRES
DECIMALIZED NUMBERS INDICATE METRES

NOTE: ALL VALVES TO BE INSTALLED CLOCKWISE TO CLOSE

WARNING
IF POWER EQUIPMENT OR EXPLOSIVES ARE TO BE USED FOR EXCAVATION ON THIS PROJECT THE CONTRACTOR MUST:
1) NOTIFY THE GAS COMPANY OF THE PROPOSED LOCATION OF EXCAVATION.
2) TAKE PRECAUTION TO AVOID DAMAGE TO GAS COMPANY INSTALLATIONS.
SEE PROVINCIAL REGULATION 210/72 FOR DETAILS



EXISTING	LEGEND-PLAN	PROPOSED	EXISTING	LEGEND-PLAN	PROPOSED	EXISTING	LEGEND-PROFILE	PROPOSED
○	200 WM	○	SL, HYDRO	○	150 WM	○	WATERMAIN	○
⊕	HYDRANT	⊕	MTS	⊕	HYDRANT	⊕	HYDRANT	⊕
⊙	VALVE	⊙	TRAFFIC SIGNALS	⊙	VALVE	⊙	VALVE	⊙
⊗	525 LDS	⊗	GAS	⊗	50 GAS	⊗	LAND DRAINAGE SEWER	⊗
⊘	LAND DRAINAGE SEWER	⊘	50 GAS	⊘	300 LDS	⊘	WASTEWATER SEWER	⊘
⊙	375 WWS	⊙	SURVEY BAR	⊙	250 WWS	⊙	WASTEWATER SEWER	⊙
○	WASTEWATER SEWER	○	FENCE	○	250 WWS	○	250 WWS	○
○	MANHOLE	○	POLE - HYDRO, MTS	○	250 WWS	○	250 WWS	○
□	CATCH BASIN	□	CURB STOP	□	250 WWS	□	250 WWS	□
▽	CURB INLET	▽	GUY ANCHOR	▽	250 WWS	▽	250 WWS	▽
▽	REDUCER	▽	LIGHT STANDARD	▽	250 WWS	▽	250 WWS	▽
X	COUPLER	X	TREE	X	250 WWS	X	250 WWS	X
⊕	ANODE	⊕		⊕	250 WWS	⊕	250 WWS	⊕

LOCATION APPROVED UNDERGROUND STRUCTURES	
SUPV. U/G STRUCTURES COMMITTEE	DATE
NOTE: LOCATION OF UNDERGROUND STRUCTURES AS SHOWN ARE BASED ON THE BEST INFORMATION AVAILABLE BUT NO GUARANTEE IS GIVEN THAT ALL EXISTING UTILITIES ARE SHOWN OR THAT THE GIVEN LOCATIONS ARE EXACT. CONFIRMATION OF EXISTENCE AND EXACT LOCATION OF ALL SERVICES MUST BE OBTAINED FROM THE INDIVIDUAL UTILITIES BEFORE PROCEEDING WITH CONSTRUCTION.	

CITY OF WINNIPEG WATER AND WASTE ENGINEERING DIVISION	
DESIGNED BY: DB	CHECKED BY: KZ/SC
DRAWN BY: CJH	APPROVED BY: KZ
HOR. SCALE: 1:250	RELEASED FOR CONSTRUCTION
VERTICAL: 1:50	
DATE: 2010 03 25	DATE:

ENGINEER'S SEAL
ORIGINAL MYLAR SIGNED BY
K.R. ZUREK
10/03/25

THE CITY OF WINNIPEG
WATER AND WASTE DEPARTMENT

2010 WATERMAIN RENEWALS
CONTRACT 2
PEMBINA HIGHWAY
87.50 S OF DALHOUSIE DRIVE TO
237.50 S OF DALHOUSIE DRIVE

SHEET 7 OF 9
CITY DRAWING NUMBER
D-12019