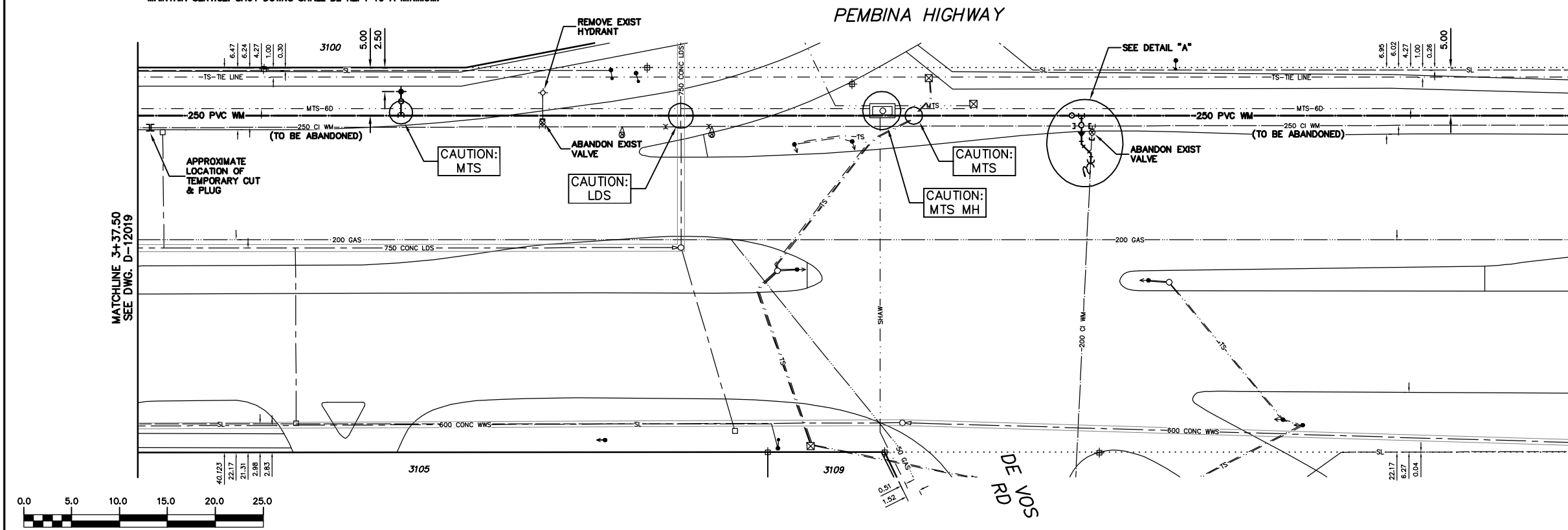


NOTE: WATER SERVICE TO 3100 PEMBINA HWY SHALL NOT BE FED BY TEMPORARY HOSE LINE. CONTRACTOR TO TEMPORARILY CUT & PLUG EXIST MAIN AT APPROXIMATE LOCATIONS AS SHOWN ON DRAWING TO MAINTAIN SERVICE. SHUT DOWNS SHALL BE KEPT TO A MINIMUM.

NOTE: CHAINAGES SHOWN ARE ALONG E R OF PEMBINA HWY.



FOR CONSTRUCTION NOTES  
SEE DRAWING D-12019

FOR SERVICE INFORMATION  
SEE DRAWING D-12018

METRIC  
WHOLE NUMBERS INDICATE MILLIMETRES  
DECIMALIZED NUMBERS INDICATE METRES

NOTE: ALL VALVES TO BE INSTALLED  
CLOCKWISE TO CLOSE

**WARNING**

IF POWER EQUIPMENT OR EXPLOSIVES ARE TO BE USED FOR EXCAVATION ON THIS PROJECT THE CONTRACTOR MUST:  
1) NOTIFY THE GAS COMPANY OF THE PROPOSED LOCATION OF EXCAVATION.  
2) TAKE PRECAUTION TO AVOID DAMAGE TO GAS COMPANY INSTALLATIONS.  
SEE PROVINCIAL REGULATION 210/72 FOR DETAILS

| EXISTING | LEGEND-PLAN         | PROPOSED | EXISTING               | LEGEND-PLAN | PROPOSED | EXISTING | LEGEND-PROFILE         | PROPOSED |
|----------|---------------------|----------|------------------------|-------------|----------|----------|------------------------|----------|
| ○        | 200 WM              | ○        | SL, HYDRO              | ○           | ○        | ○        | 150 WM                 | ○        |
| ⊕        | HYDRANT             | ⊕        | MTS                    | ⊕           | ⊕        | ⊕        | HYDRANT                | ⊕        |
| ⊙        | VALVE               | ⊙        | TRAFFIC SIGNALS        | ⊙           | ⊙        | ⊙        | VALVE                  | ⊙        |
| ⊖        | 525 LDS             | ⊖        | GAS                    | ⊖           | ⊖        | ⊖        | 50 GAS                 | ⊖        |
| ⊗        | LAND DRAINAGE SEWER | ⊗        | 50 GAS                 | ⊗           | ⊗        | ⊗        | 300 LDS                | ⊗        |
| ⊘        | WASTEWATER SEWER    | ⊘        | SURVEY BAR             | ⊘           | ⊘        | ⊘        | WASTEWATER SEWER       | ⊘        |
| ○        | 375 WWS             | ○        | FENCE                  | ○           | ○        | ○        | 250 WWS                | ○        |
| ○        | MANHOLE             | ○        | POLE - HYDRO, MTS      | ○           | ○        | ○        | € PROFILE              | ○        |
| □        | CATCH BASIN         | □        | CURB STOP              | □           | □        | □        | GROUND ABOVE PIPE      | □        |
| ▽        | CURB INLET          | ▽        | € DITCH (NORTH & WEST) | ▽           | ▽        | ▽        | € DITCH (SOUTH & EAST) | ▽        |
| ∇        | REDUCER             | ∇        | GUY ANCHOR             | ∇           | ∇        | ∇        | GUTTER (NORTH & WEST)  | ∇        |
| ×        | COUPLER             | ×        | LIGHT STANDARD         | ×           | ×        | ×        | GUTTER (SOUTH & EAST)  | ×        |
| ⊕        | ANODE               | ⊕        | TREE                   | ⊕           | ⊕        | ⊕        |                        | ⊕        |

| LOCATION APPROVED   | DATE |
|---|------|
| UNDERGROUND STRUCTURES  |      |
| SUPV. U/G STRUCTURES COMMITTEE  |      |
| NOTE:   |      |
| LOCATION OF UNDERGROUND STRUCTURES AS SHOWN ARE BASED ON THE BEST INFORMATION AVAILABLE BUT NO GUARANTEE IS GIVEN THAT ALL EXISTING UTILITIES ARE SHOWN OR THAT THE GIVEN LOCATIONS ARE EXACT. CONFIRMATION OF EXISTENCE AND EXACT LOCATION OF ALL SERVICES MUST BE OBTAINED FROM THE INDIVIDUAL UTILITIES BEFORE PROCEEDING WITH CONSTRUCTION. |      |

| DESIGNED BY | CHECKED BY  |
|-------------|-------------|
| DB          | KZ/SC       |
| DRAWN BY    | APPROVED BY |
| CJH         | KZ          |
| HOR. SCALE  | VERTICAL    |
| 1:250       | 1:50        |
| DATE        | DATE        |
| 2010 03 25  |             |

ENGINEER'S SEAL  
ORIGINAL MYLAR  
SIGNED BY  
K.R. ZUREK  
10/03/25  
BID OPPORTUNITY 216-2010  
FILENAME : D-12020.dwg  
PLOT DATE : 2010 03 25

**THE CITY OF WINNIPEG**  
WATER AND WASTE DEPARTMENT

2010 WATERMAIN RENEWALS  
CONTRACT 2  
**PEMBINA HIGHWAY**  
237.50 S OF DALHOUSIE DRIVE TO  
70 S OF DE VOS ROAD

SHEET 8 OF 9  
CITY DRAWING NUMBER  
D-12020