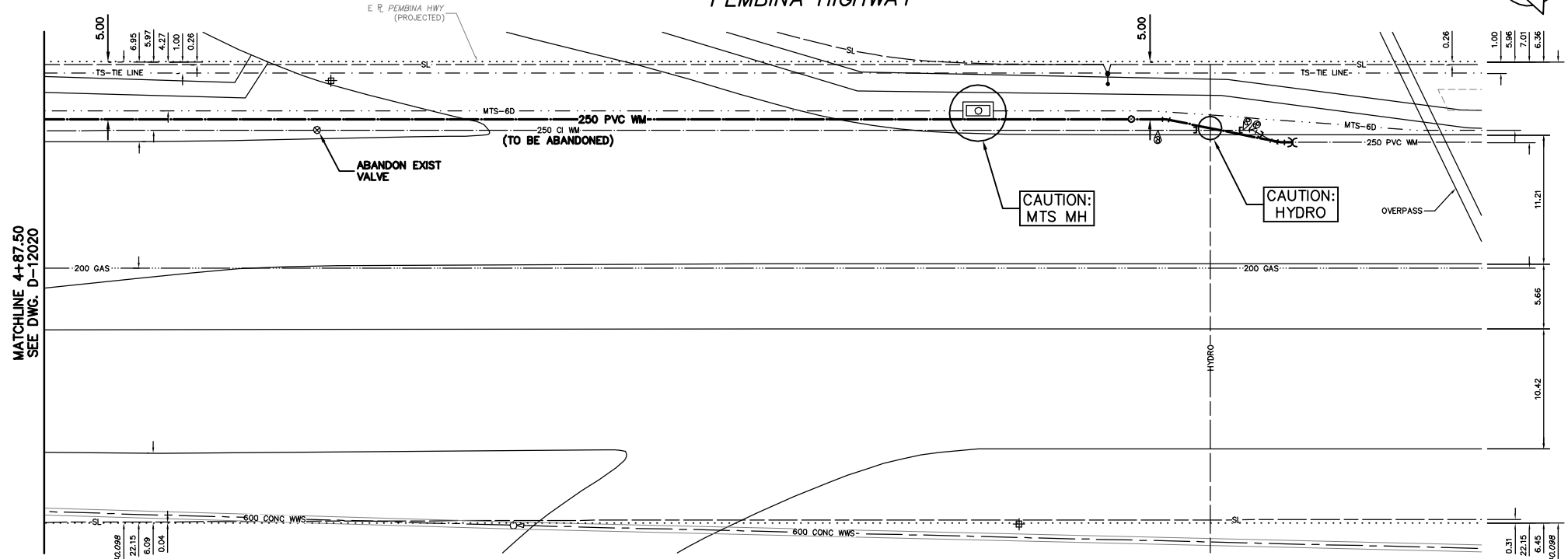


NOTE: CHAINAGES SHOWN ARE ALONG E R OF PEMBINA HWY.

PEMBINA HIGHWAY



- CONSTRUCTION NOTES**
1. EXPOSE EXISTING WATERMAIN & CONFIRM INVERTS PRIOR TO CONSTRUCTION.
 2. LOCATION OF ALL SERVICES TO BE CONFIRMED IN THE FIELD.
 3. INSTALL WATERMAIN BY TRENCHLESS METHODS.
 4. TRENCHES AND EXCAVATIONS WITHIN 1 METRE OF A PAVED AREA INCLUDING SIDEWALKS SHALL BE CLASS 3 BACKFILL.
 5. ALL MATERIALS SHALL CONFORM TO THE CITY OF WINNIPEG STANDARD CONSTRUCTION SPECIFICATIONS.
 6. MINIMUM COVER TO TOP OF WATERMAIN SHALL BE 2.4 m.
 7. REPLACE ALL EXISTING LEAD SERVICES FROM PROPOSED WATERMAIN TO R.
 8. NOTIFY ALL AFFECTED RESIDENTS AND BUSINESSES 24 HOURS IN ADVANCE OF ANY WATER SHUTDOWNS OR DISRUPTION OF SERVICE.

METRIC
WHOLE NUMBERS INDICATE MILLIMETRES
DECIMALIZED NUMBERS INDICATE METRES

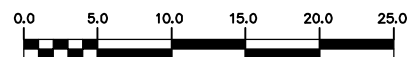
NOTE: ALL VALVES TO BE INSTALLED
CLOCKWISE TO CLOSE

WARNING

IF POWER EQUIPMENT OR EXPLOSIVES ARE TO BE USED FOR EXCAVATION ON THIS PROJECT THE CONTRACTOR MUST:

- 1) NOTIFY THE GAS COMPANY OF THE PROPOSED LOCATION OF EXCAVATION.
- 2) TAKE PRECAUTION TO AVOID DAMAGE TO GAS COMPANY INSTALLATIONS.

SEE PROVINCIAL REGULATION 210/72 FOR DETAILS



EXISTING	LEGEND-PLAN	PROPOSED	EXISTING	LEGEND-PLAN	PROPOSED	EXISTING	LEGEND-PROFILE	PROPOSED
200 WM	WATERMAIN	200 WM	SL, HYDRO	150 WM	WATERMAIN	150 WM		
⊕	HYDRANT	⊕	MTS	+	HYDRANT	+		
⊙	VALVE	⊙	TRAFFIC SIGNALS	X	VALVE	X		
525 LDS	LAND DRAINAGE SEWER	525 LDS	GAS	50 GAS	300 LDS	LAND DRAINAGE SEWER	300 LDS	
375 WWS	WASTEWATER SEWER	375 WWS	SURVEY BAR	250 WWS	WASTEWATER SEWER	250 WWS		
○	MANHOLE	●	FENCE	X	€	PROFILE		
□	CATCH BASIN	■	POLE - HYDRO, MTS	=====	GROUND ABOVE PIPE			
▽	CURB INLET	▽	CURB STOP	♂	€	DITCH (NORTH & WEST)		
◁	REDUCER	◁	GUY ANCHOR	—	€	DITCH (SOUTH & EAST)		
X	COUPLER	X	LIGHT STANDARD	□	GUTTER (NORTH & WEST)			
⊕	ANODE	⊕	TREE	○	GUTTER (SOUTH & EAST)			

LOCATION APPROVED UNDERGROUND STRUCTURES

SUPV. U/G STRUCTURES COMMITTEE DATE

NOTE:
LOCATION OF UNDERGROUND STRUCTURES AS SHOWN ARE BASED ON THE BEST INFORMATION AVAILABLE BUT NO GUARANTEE IS GIVEN THAT ALL EXISTING UTILITIES ARE SHOWN OR THAT THE GIVEN LOCATIONS ARE EXACT. CONFIRMATION OF EXISTENCE AND EXACT LOCATION OF ALL SERVICES MUST BE OBTAINED FROM THE INDIVIDUAL UTILITIES BEFORE PROCEEDING WITH CONSTRUCTION.

B.M. ELEV. FIELD BOOK #

POSTED TO LBS

NO. REVISIONS DATE BY

CITY OF WINNIPEG
WATER AND WASTE
ENGINEERING DIVISION

DESIGNED BY DB CHECKED BY KZ/SC

DRAWN BY CJH APPROVED BY KZ

HOR. SCALE 1:250
VERTICAL 1:50

DATE 2010 03 25

RELEASED FOR CONSTRUCTION

ENGINEER'S SEAL

ORIGINAL MYLAR
SIGNED BY
K.R. ZUREK
10/03/25

BID OPPORTUNITY 216-2010
FILENAME : D-12021.dwg
PLOT DATE : 2010 03 25

THE CITY OF WINNIPEG
WATER AND WASTE DEPARTMENT

2010 WATERMAIN RENEWALS
CONTRACT 2
PEMBINA HIGHWAY
70 S OF DE VOS ROAD TO
195 S OF DE VOS ROAD

SHEET 9 OF 9
CITY DRAWING NUMBER
D-12021