

- NOTES:**
- ALL WORK AND MATERIALS TO BE IN ACCORDANCE WITH THE LATEST REVISIONS OF THE CITY OF WINNIPEG STANDARD CONSTRUCTION SPECIFICATIONS.
  - CONTRACTOR TO VERIFY DEPTH OF UTILITIES PRIOR TO CONSTRUCTION.
  - LOCATION OF UNDERGROUND STRUCTURES AS SHOWN ARE BASED ON THE BEST INFORMATION AVAILABLE, BUT NO GUARANTEE IS GIVEN THAT ALL EXISTING UTILITIES ARE SHOWN OR THAT THE GIVEN LOCATIONS ARE EXACT. CONFIRMATION OF EXISTENCE AND EXACT LOCATION OF ALL SERVICES MUST BE OBTAINED FROM THE INDIVIDUAL UTILITIES BEFORE PROCEEDING WITH CONSTRUCTION.
  - EXCAVATED MATERIAL TO BE USED AS BACKFILL WHERE REQUIRED.
  - ALL SURFACES TO BE MAINTAINED OR RESTORED TO PREVIOUS CONDITION OR BETTER.
  - REFER TO CITY OF WINNIPEG E-SPEC FOR INSTALLATION OF DETECTABLE WARNING SURFACE TILES (CONTACT BRUCE PETERS @ 986-5302 FOR FURTHER INFORMATION).



**METRIC**  
WHOLE NUMBERS INDICATE MILLIMETERS  
DECIMALIZED NUMBERS INDICATE METERS

NOTE: These design documents are prepared solely for the use by the party with whom the design professional has entered into a contract and there are no representations of any kind made by the design professional to any party with whom the design professional has not entered into a contract.

EXISTING	PROPERTY LINE	PROPOSED	EXISTING	ROAD SHOULDER	PROPOSED	EXISTING	EXISTING GROUND	PROPOSED	EXISTING	PROPOSED
---	PROPERTY LINE	---	---	ROAD SHOULDER	---	---	EXISTING GROUND	---	---	---
○	MANHOLE	○	---	DITCH FLOW	---	---	PROPOSED CENTERLINE	---	---	---
□	CATCH BASIN	□	---	---	---	---	---	---	---	---
HP	HYDRO POLE	HP	---	---	---	---	---	---	---	---
HP	HYDRO POLE WITH LIGHT	HP	---	---	---	---	---	---	---	---
31.99	ELEVATION	32.50	---	---	---	---	---	---	---	---
---	CMP. CULVERT	---	---	---	---	---	---	---	---	---
---	SWALE	---	---	---	---	---	---	---	---	---
---	HYDRANT	---	---	---	---	---	---	---	---	---
---	ASPHALT PAVEMENT	---	---	---	---	---	---	---	---	---
---	PATHWAY CENTRELINE	---	---	---	---	---	---	---	---	---

**LOCATIONS APPROVED**

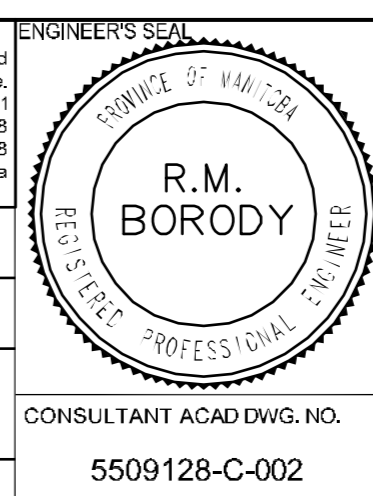
NO.	REVISIONS	DATE	BY
4	-	-	-
3	-	-	-
2	ISSUED FOR TENDER	05.04.10	RMB
1	ISSUED FOR REVIEW	22.01.10	RMB

G.B.M. XXXX  
ELEV. 232.335

CITY OF WINNIPEG MAPPING AND SURVEYS CAP IN CONCRETE (P.L.E. S/E CORNER OF BISHOP GRANDIN BLVD AND WAVERLEY AVE.)

**MMM GROUP**

DESIGNED BY	CHECKED BY
MR	WJ
DRAWN BY	APPROVED BY
MR	-
HOR. SCALE	RELEASED FOR CONSTRUCTION
1:500	-
VERTICAL	DATE
1:25	22.01.10



**CITY OF WINNIPEG**  
PUBLIC WORKS DEPARTMENT  
TRANSPORTATION ENGINEERING DIVISION

**2010 ACTIVE TRANSPORTATION PROGRAM**  
BISHOP GRANDIN / KENASTON BLVD GREENWAY

WAVERLEY STREET TO MCGILLIVARY BLVD  
MULTI-USE PATHWAY  
STA. 1+360 TO 1+725

**C-002**

SHEET 2 OF 8

Apr 03, 2010 - 2:02pm  
P:\5509128-C-002\5509128-C-002\Bisop Grandin Multi-Use Pathway - Property to McGilivray\MMM DWG'S\Revise 00 Pathway Process - Alignment Apr 7\_10.dwg - tab-C-02 1+360 TO 1+725