

- NOTES:**
1. ALL WORK AND MATERIALS TO BE IN ACCORDANCE WITH THE LATEST REVISIONS OF THE CITY OF WINNIPEG STANDARD CONSTRUCTION SPECIFICATIONS.
 2. CONTRACTOR TO VERIFY DEPTH OF UTILITIES PRIOR TO CONSTRUCTION.
 3. LOCATION OF UNDERGROUND STRUCTURES AS SHOWN ARE BASED ON THE BEST INFORMATION AVAILABLE, BUT NO GUARANTEE IS GIVEN THAT ALL EXISTING UTILITIES ARE SHOWN OR THAT THE GIVEN LOCATIONS ARE EXACT. CONFIRMATION OF EXISTENCE AND EXACT LOCATION OF ALL SERVICES MUST BE OBTAINED FROM THE INDIVIDUAL UTILITIES BEFORE PROCEEDING WITH CONSTRUCTION.
 4. EXCAVATED MATERIAL TO BE USED AS BACKFILL WHERE REQUIRED.
 5. ALL SURFACES TO BE MAINTAINED OR RESTORED TO PREVIOUS CONDITION OR BETTER.
 6. REFER TO CITY OF WINNIPEG E-SPEC FOR INSTALLATION OF DETECTABLE WARNING SURFACE TILES (CONTACT BRUCE PETERS @ 986-5302 FOR FURTHER INFORMATION).



NOTE:
These design documents are prepared solely for the use by the party with whom the design professional has entered into a contract and there are no representations of any kind made by the design professional to any party with whom the design professional has not entered into a contract.

EXISTING	PROPERTY LINE	PROPOSED	EXISTING	ROAD SHOULDER	PROPOSED	EXISTING	EXISTING GROUND	PROPOSED	PROPOSED CENTERLINE
---	MANHOLE	○	---	DITCH FLOW	→	---	---	---	---
□	CATCH BASIN	□	---	---	---	---	---	---	---
HP	HYDRO POLE	HP	---	---	---	---	---	---	---
HP	HYDRO POLE WITH LIGHT	HP	---	---	---	---	---	---	---
31.99	ELEVATION	(32.50)	---	---	---	---	---	---	---
---	CMP. CULVERT	---	---	---	---	---	---	---	---
---	SWALE	---	---	---	---	---	---	---	---
---	HYDRANT	---	---	---	---	---	---	---	---
---	ASPHALT PAVEMENT	---	---	---	---	---	---	---	---
---	PATHWAY CENTRELINE	---	---	---	---	---	---	---	---
---	LEGEND-PLAN	---	---	LEGEND-PLAN	---	---	LEGEND-PROFILE	---	---

LOCATIONS APPROVED

UNDERGROUND STRUCTURES

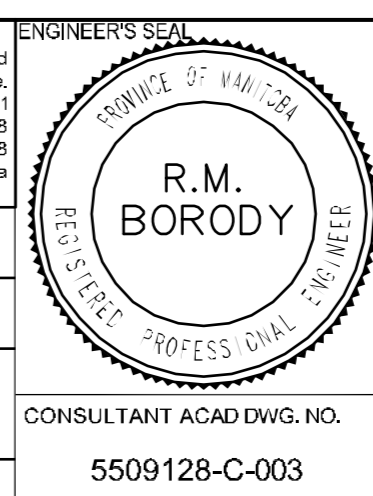
SIGNED BY: _____ DATE: _____

SUPV U/G STRUCTURES DATE

LOCATION OF UNDERGROUND STRUCTURES AS SHOWN ARE BASED ON THE BEST INFORMATION AVAILABLE, BUT NO GUARANTEE IS GIVEN THAT ALL EXISTING UTILITIES ARE SHOWN OR THAT THE GIVEN LOCATIONS ARE EXACT. CONFIRMATION OF EXISTENCE AND EXACT LOCATION OF ALL SERVICES MUST BE OBTAINED FROM THE INDIVIDUAL UTILITIES BEFORE PROCEEDING

NO.	REVISIONS	DATE	BY
4	-	-	-
3	-	-	-
2	ISSUED FOR TENDER	05.04.10	RMB
1	ISSUED FOR REVIEW	22.01.10	RMB

DESIGNED BY	MR	CHECKED BY	WJ
DRAWN BY	MR	APPROVED BY	-
HOR. SCALE	1:500	RELEASED FOR CONSTRUCTION	-
VERTICAL	1:25	DATE	22.01.10



METRIC
WHOLE NUMBERS INDICATE MILLIMETERS
DECIMALIZED NUMBERS INDICATE METERS

MM GROUP

MMM Group Limited
Suite 111 - 93 Lombard Ave.
Winnipeg, MB R2B 3B1
T: 204.943.3378
F: 204.943.4948
www.mmm.ca

CITY OF WINNIPEG
PUBLIC WORKS DEPARTMENT
TRANSPORTATION ENGINEERING DIVISION

2010 ACTIVE TRANSPORTATION PROGRAM
BISHOP GRANDIN / KENASTON BLVD
GREENWAY

WAVERLEY STREET TO MCGILLIVRAY BLVD
MULTI-USE PATHWAY
STA. 1+725 TO 2+085

C-003

SHEET 3 OF 8

Apr 03, 2010 - 3:02pm - P:\5509128-C-004\Drawings\5509128-C-004 Pathway - Waverley to McGillivray\MMM DWG\5509128-C-004 Pathway Proposed - Alignment Apr 7_10.dwg - 100C-03 1+725 TO 2+085