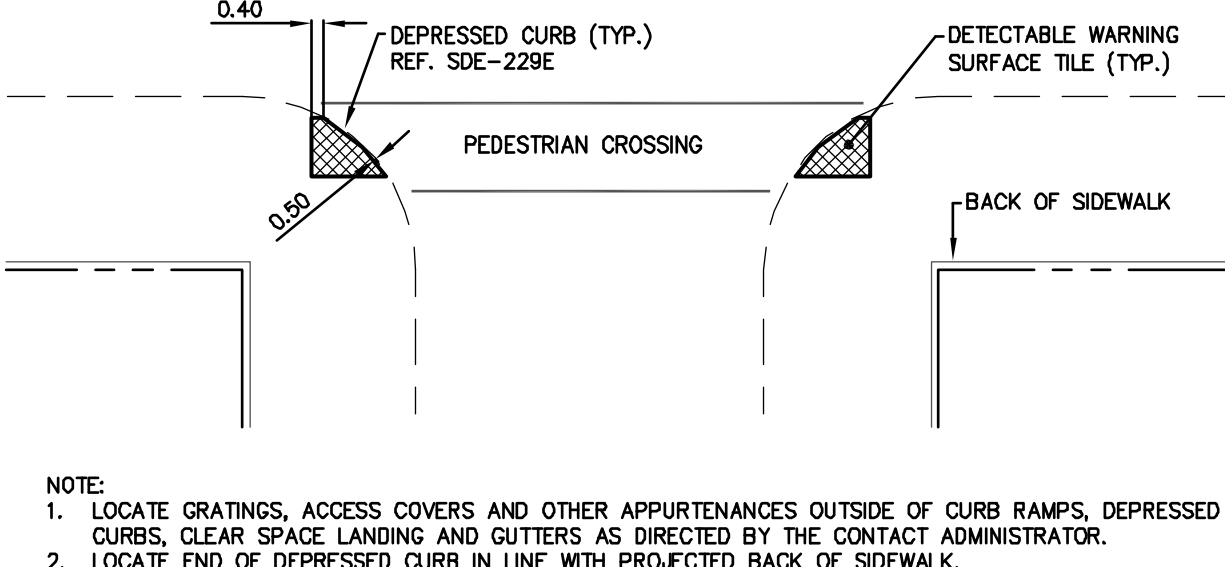
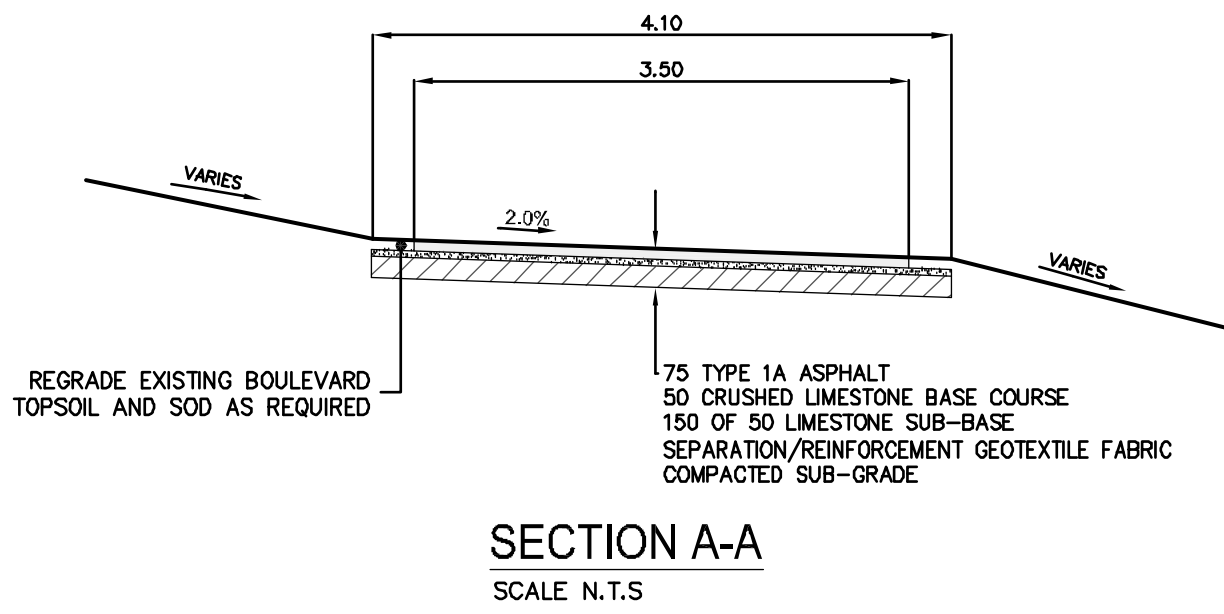


MATCHLINE - SEE DWG. 5509128-C-003 STA 2+085

MATCHLINE - SEE DWG. 5509128-C-005 STA 2+435



NOTE:
 1. LOCATE GRATINGS, ACCESS COVERS AND OTHER APPURTENANCES OUTSIDE OF CURB RAMPS, DEPRESSED CURBS, CLEAR SPACE LANDING AND GUTTERS AS DIRECTED BY THE CONTACT ADMINISTRATOR.
 2. LOCATE END OF DEPRESSED CURB IN LINE WITH PROJECTED BACK OF SIDEWALK.

- NOTES:**
1. ALL WORK AND MATERIALS TO BE IN ACCORDANCE WITH THE LATEST REVISIONS OF THE CITY OF WINNIPEG STANDARD CONSTRUCTION SPECIFICATIONS.
 2. CONTRACTOR TO VERIFY DEPTH OF UTILITIES PRIOR TO CONSTRUCTION.
 3. LOCATION OF UNDERGROUND STRUCTURES AS SHOWN ARE BASED ON THE BEST INFORMATION AVAILABLE, BUT NO GUARANTEE IS GIVEN THAT ALL EXISTING UTILITIES ARE SHOWN OR THAT THE GIVEN LOCATIONS ARE EXACT. CONFIRMATION OF EXISTENCE AND EXACT LOCATION OF ALL SERVICES MUST BE OBTAINED FROM THE INDIVIDUAL UTILITIES BEFORE PROCEEDING WITH CONSTRUCTION.
 4. EXCAVATED MATERIAL TO BE USED AS BACKFILL WHERE REQUIRED.
 5. ALL SURFACES TO BE MAINTAINED OR RESTORED TO PREVIOUS CONDITION OR BETTER.
 6. REFER TO CITY OF WINNIPEG E-SPEC FOR INSTALLATION OF DETECTABLE WARNING SURFACE TILES (CONTACT BRUCE PETERS @ 986-5302 FOR FURTHER INFORMATION).



METRIC
 WHOLE NUMBERS INDICATE MILLIMETERS
 DECIMALIZED NUMBERS INDICATE METERS

NOTE:
 These design documents are prepared solely for the use by the party with whom the design professional has entered into a contract and there are no representations of any kind made by the design professional to any party with whom the design professional has not entered into a contract.

---	PROPERTY LINE	---	ROAD SHOULDER	---	EXISTING GROUND	---	PROPOSED CENTERLINE	---
○	MANHOLE	○	DITCH FLOW	---	---	---	---	---
□	CATCH BASIN	---	---	---	---	---	---	---
HP	HYDRO POLE	---	---	---	---	---	---	---
HP	HYDRO POLE WITH LIGHT	---	---	---	---	---	---	---
31.99	ELEVATION	(32.50)	---	---	---	---	---	---
---	CMP. CULVERT	---	---	---	---	---	---	---
---	SWALE	---	---	---	---	---	---	---
---	HYDRANT	---	---	---	---	---	---	---
---	ASPHALT PAVEMENT	---	---	---	---	---	---	---
---	PATHWAY CENTRELINE	---	---	---	---	---	---	---
---	EXISTING	---	EXISTING	---	EXISTING	---	EXISTING	---
---	LEGEND-PLAN	---	LEGEND-PLAN	---	LEGEND-PROFILE	---	LEGEND-PROFILE	---

LOCATIONS APPROVED

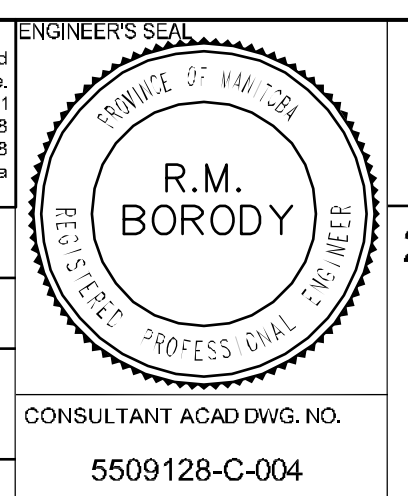
U	UNDERGROUND STRUCTURES	---	---	---	---
S	SUPV. U/G STRUCTURES	---	---	---	---
D	DATE	---	---	---	---

LOCATION OF UNDERGROUND STRUCTURES AS SHOWN ARE BASED ON THE BEST INFORMATION AVAILABLE, BUT NO GUARANTEE IS GIVEN THAT ALL EXISTING UTILITIES ARE SHOWN OR THAT THE GIVEN LOCATIONS ARE EXACT. CONFIRMATION OF EXISTENCE AND EXACT LOCATION OF ALL SERVICES MUST BE OBTAINED FROM THE INDIVIDUAL UTILITIES BEFORE PROCEEDING.

G.B.M. XXXX	---	---	---	---	---
ELEV. 232.335	---	---	---	---	---
4	ISSUED FOR TENDER	05.04.10	RMB	---	---
3	ISSUED FOR REVIEW	22.01.10	RMB	---	---
1	NO. REVISIONS	---	---	---	---
---	DATE	---	---	---	---
---	BY	---	---	---	---

MMM GROUP

DESIGNED BY	MR	CHECKED BY	WJ
DRAWN BY	MR	APPROVED BY	---
HOR. SCALE	1:500	RELEASED FOR CONSTRUCTION	---
VERTICAL	1:25	DATE	22.01.10



CITY OF WINNIPEG
 PUBLIC WORKS DEPARTMENT
 TRANSPORTATION ENGINEERING DIVISION

2010 ACTIVE TRANSPORTATION PROGRAM
 BISHOP GRANDIN / KENASTON BLVD
 GREENWAY

WAVERLEY STREET TO MCGILLIVARY BLVD
MULTI-USE PATHWAY
 STA. 2+085 TO 2+435

C-004

SHEET 4 OF 8

Apr 03, 2010 - 3:27pm - P:\5509128-C-003\Bicycle Production\Multi-Use Pathway - Waverley to McGillivary\MMM DWG\5509128-C-003 STA 2+085 TO 2+435