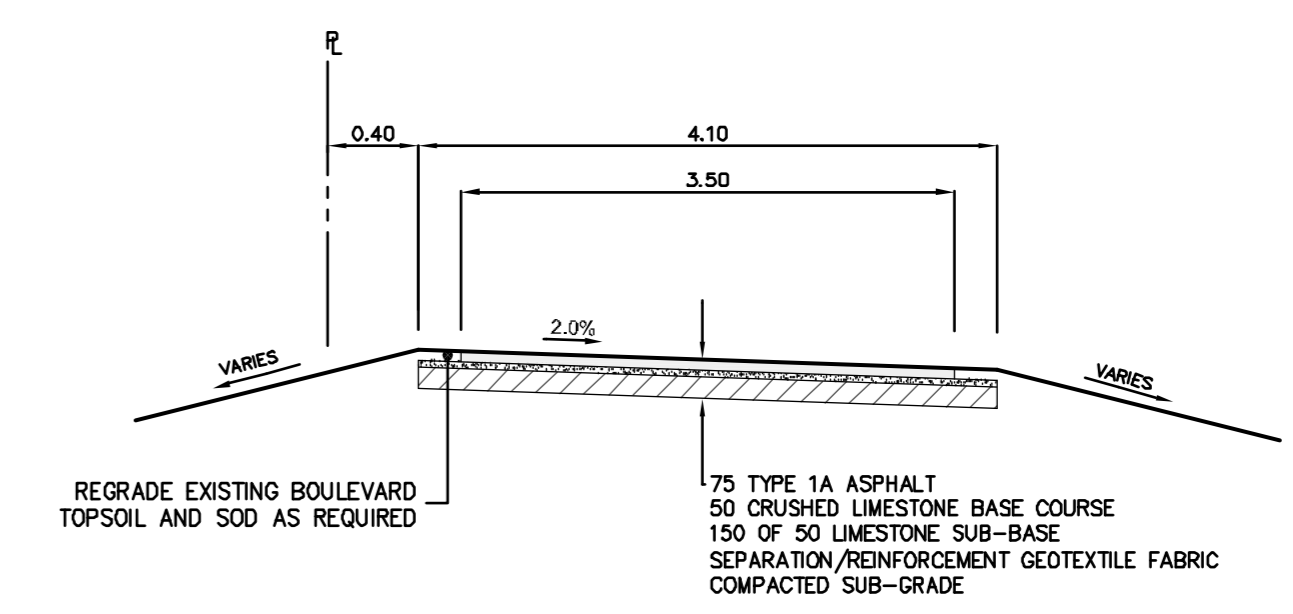


NOTE:
 1. LOCATE GRATINGS, ACCESS COVERS AND OTHER APPURTENANCES OUTSIDE OF CURB RAMPS, DEPRESSED CURBS, CLEAR SPACE LANDING AND GUTTERS AS DIRECTED BY THE CONTACT ADMINISTRATOR.
 2. LOCATE END OF DEPRESSED CURB IN LINE WITH PROJECTED BACK OF SIDEWALK.

TYPICAL CURB RAMP DETAIL
 SCALE: N.T.S.



SECTION C-C
 SCALE: N.T.S.

- NOTES:
- ALL WORK AND MATERIALS TO BE IN ACCORDANCE WITH THE LATEST REVISIONS OF THE CITY OF WINNIPEG STANDARD CONSTRUCTION SPECIFICATIONS.
 - CONTRACTOR TO VERIFY DEPTH OF UTILITIES PRIOR TO CONSTRUCTION.
 - LOCATION OF UNDERGROUND STRUCTURES AS SHOWN ARE BASED ON THE BEST INFORMATION AVAILABLE, BUT NO GUARANTEE IS GIVEN THAT ALL EXISTING UTILITIES ARE SHOWN OR THAT THE GIVEN LOCATIONS ARE EXACT. CONFIRMATION OF EXISTENCE AND EXACT LOCATION OF ALL SERVICES MUST BE OBTAINED FROM THE INDIVIDUAL UTILITIES BEFORE PROCEEDING WITH CONSTRUCTION.
 - EXCAVATED MATERIAL TO BE USED AS BACKFILL WHERE REQUIRED.
 - ALL SURFACES TO BE MAINTAINED OR RESTORED TO PREVIOUS CONDITION OR BETTER.
 - REFER TO CITY OF WINNIPEG E-SPEC FOR INSTALLATION OF DETECTABLE WARNING SURFACE TILES (CONTACT BRUCE PETERS @ 986-5302 FOR FURTHER INFORMATION).



METRIC
 WHOLE NUMBERS INDICATE MILLIMETERS
 DECIMALIZED NUMBERS INDICATE METERS

NOTE:
 These design documents are prepared solely for the use by the party with whom the design professional has entered into a contract and there are no representations of any kind made by the design professional to any party with whom the design professional has not entered into a contract.

| | | | | | | | | |
|----------|-----------------------|----------|----------|---------------|----------|----------|---------------------|----------|
| --- | PROPERTY LINE | | --- | ROAD SHOULDER | | --- | EXISTING GROUND | |
| ○ | MANHOLE | | → | DITCH FLOW | | --- | PROPOSED CENTERLINE | |
| □ | CATCH BASIN | | | | | | | |
| HP | HYDRO POLE | | | | | | | |
| HP | HYDRO POLE WITH LIGHT | | | | | | | |
| 31.99 | ELEVATION | (32.50) | | | | | | |
| | CMP CULVERT | | | | | | | |
| | SWALE | | | | | | | |
| ◇ | HYDRANT | | | | | | | |
| | ASPHALT PAVEMENT | | | | | | | |
| | PATHWAY CENTRELINE | | | | | | | |
| EXISTING | LEGEND-PLAN | PROPOSED | EXISTING | LEGEND-PLAN | PROPOSED | EXISTING | LEGEND-PROFILE | PROPOSED |

LOCATIONS APPROVED

UNDERGROUND STRUCTURES

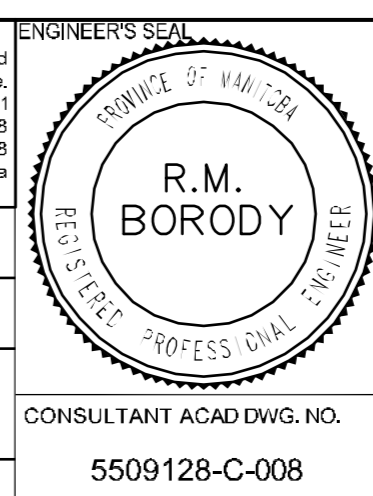
SIGNED BY: _____ DATE: _____

SUPV U/G STRUCTURES DATE

LOCATION OF UNDERGROUND STRUCTURES AS SHOWN ARE BASED ON THE BEST INFORMATION AVAILABLE, BUT NO GUARANTEE IS GIVEN THAT ALL EXISTING UTILITIES ARE SHOWN OR THAT THE GIVEN LOCATIONS ARE EXACT. CONFIRMATION OF EXISTENCE AND EXACT LOCATION OF ALL SERVICES MUST BE OBTAINED FROM THE INDIVIDUAL UTILITIES BEFORE PROCEEDING

| | | |
|-------------|--|---------------|
| G.B.M. XXXX | CITY OF WINNIPEG MAPPING AND SURVEYS CAP IN CONCRETE PILE, S/E CORNER OF BISHOP GRANDIN BLVD AND WAVERLEY AVE. | ELEV. 232.335 |
| 4 | - | - |
| 3 | - | - |
| 2 | ISSUED FOR TENDER | 05.04.10 RMB |
| 1 | ISSUED FOR REVIEW | 22.01.10 RMB |
| NO. | REVISIONS | DATE BY |

| | |
|------------------|----------|
| MMM GROUP | |
| DESIGNED BY | MR |
| CHECKED BY | WJ |
| DRAWN BY | MR |
| APPROVED BY | - |
| HOR. SCALE | 1:500 |
| VERTICAL | 1:25 |
| DATE: | 22.01.10 |



ENGINEER'S SEAL

MMM Group Limited
 Suite 111 - 93 Lombard Ave.
 Winnipeg, MB R2B 3B1
 T: 204.943.3178
 F: 204.943.4548
 www.mmm.ca

CITY OF WINNIPEG
 PUBLIC WORKS DEPARTMENT
 TRANSPORTATION ENGINEERING DIVISION

2010 ACTIVE TRANSPORTATION PROGRAM
 BISHOP GRANDIN / KENASTON BLVD
 GREENWAY

WAVERLEY STREET TO MCGILLIVRAY BLVD
 MULTI-USE PATHWAY

STA. 3+480 TO 3+585

| | |
|--------------|--------|
| C-008 | |
| SHEET | 8 OF 8 |

Apr 03, 2010 - 3:16pm
 P:\5509128-5509128-000 Bishop Grandin Multi-Use Pathway - Waverley - Waverley to McGillivray\MMW DWG\3-Rev 00 Pathway Process Alignment Apr 7_10.dwg - lbc-C-08 3+480 TO 3+587 AND WAVERLEY