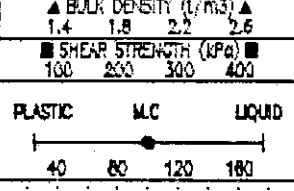
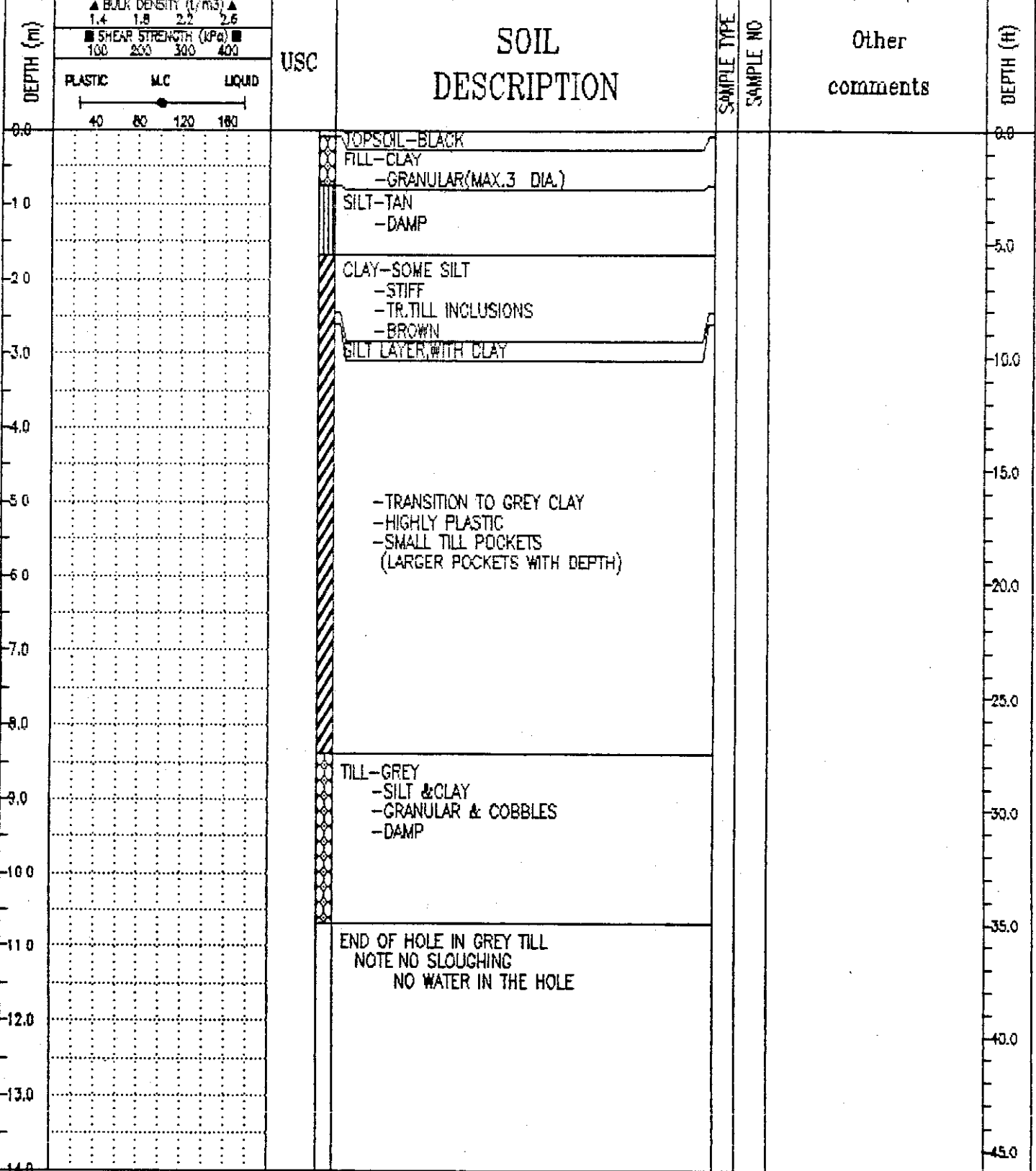


NORTH OF SASKATCHEWAN	SUBTERRANEAN LTD.	BOREHOLE No. G-88-1
GENSTAR DEVELOPMENTS LTD.		Project No: 06-0898-266-01
PROJECT ENGINEER: TW		ELEVATION 235.840 (m)

SAMPLE TYPE GRAB SAMPLE SHELEY TUBE DISTURBED NO RECOVERY CORE BARREL WIRELOG-TYPE



UMA Engineering Ltd. Winnipeg, Manitoba	COMPLETION DEPTH * * m	COMPLETE
	LOGGED BY TH	DWG NO.

NORTH OF SASKATCHEWAN		SUBTERRANEAN LTD.		BOREHOLE No. G-88-2				
GENSTAR DEVELOPMENTS LTD.				Project No: 08-0898-200-01				
PROJECT ENGINEER: TW				ELEVATION 234.250 (m)				
SAMPLE TYPE <input checked="" type="checkbox"/> GRAB SAMPLE		<input checked="" type="checkbox"/> SEEBLY TUBE		<input checked="" type="checkbox"/> DISTURBED				
		<input type="checkbox"/> NO RECOVERY		<input type="checkbox"/> CORE BARREL				
				<input type="checkbox"/> WIRELINE-TYPE				
DEPTH (m)	▲ BULK DENSITY (t/m ³) ▲ 1.4 1.8 2.2 2.6		USC	SOIL DESCRIPTION	SAMPLE TYPE	SAMPLE NO	Other comments	DEPTH (ft)
	■ SHEAR STRENGTH (kPa) ■ 100 200 300 400							
	PLASTIC M.C. LIQUID 40 80 120 160							
0.0				TOPSOIL				0.0
-1.0				FILL-GRANULAR & CLAY -GRANULAR (3 DIA.)				
-2.0				CLAY-WITH SILT -STIFF -BROWN -TR. TILL INCLUSIONS				5.0
-3.0								10.0
-4.0								
-5.0				-TRANSITION TO GREY CLAY -TILL INCLUSIONS (SMALL SAND & GRAVEL POCKETS)				15.0
-6.0								20.0
-7.0								25.0
-8.0								30.0
-9.0								35.0
-10.0								40.0
-11.0				TILL-GREY -WITH SILT & CLAY -WITH GRANULAR & COBBLES -WET (PAT TEST)				45.0
-12.0				END OF HOLE IN GREY TILL @ 11.28 NOTE: NO SLOUGHING NO WATER IN HOLE				
-13.0								
-14.0								

UMA Engineering Ltd.
Winnipeg, Manitoba

COMPLETION DEPTH ** m	COMPLETE
LOGGED BY TH	DWG NO.
	Page 1 of 1

NORTH OF SASKATCHEWAN		SUBTERRANEAN LTD.		BOREHOLE No. G-88-3	
GENSTAR DEVELOPMENTS LTD.				Project No: 08-0898-266-01	
PROJECT ENGINEER: TW				ELEVATION 234.870 (m)	
SAMPLE TYPE <input checked="" type="checkbox"/> GRAB SAMPLE		<input checked="" type="checkbox"/> SHELBY TUBE		<input checked="" type="checkbox"/> UNSTURBED	
		<input type="checkbox"/> NO RECOVERY		<input type="checkbox"/> CORE BARREL	
				<input type="checkbox"/> WIRELINE-TYPE	

DEPTH (m)	USC	SOIL DESCRIPTION	SAMPLE TYPE	SAMPLE NO	Other comments	DEPTH (#)
0.0		TOPSOIL FILL-CLAY & GRANULAR -GRANULAR TO 3 DIA.				0.0
1.0		SILT-TAN -WET TO PAT TEST				5.0
2.0		CLAY-WITH SILT -STIFF -BROWN -TR. TILL INCLUSIONS				10.0
3.0		-TRANSITION TO GREY CLAY -HIGHLY PLASTIC -TILL INCLUSIONS				15.0
4.0						20.0
5.0						25.0
6.0						30.0
7.0						35.0
8.0						40.0
9.0						45.0
10.0		TILL-SILT WITH CLAY -GREY -WITH GRANULAR & COBBLES -VERY DENSE (DIFFICULT TO DRILL) -DRY TO DAMP				
11.0						
12.0		AUGER REFUSAL @ 10.98 NOTE:NO SLOUGHING WATER ON TIP OF AUGER @ REFUSAL				
13.0						
14.0						

UMA Engineering Ltd. Winnipeg, Manitoba		COMPLETION DEPTH ** m	COMPLETE
LOGGED BY TH	DWG NO.	Page 1 of 1	

NORTH OF SASKATCHEWAN	SUBTERRANEAN LTD.	BOREHOLE No. G-88-6
GENSTAR DEVELOPMENTS LTD.		Project No: 06 -0696-268-01
PROJECT ENGINEER: TW		ELEVATION 235.650 (m)
SAMPLE TYPE <input checked="" type="checkbox"/> GRAB SAMPLE	<input checked="" type="checkbox"/> SHELBY TUBE	<input checked="" type="checkbox"/> DISTURBED
	<input type="checkbox"/> NO RECOVERY	<input type="checkbox"/> CORE BARREL
		<input type="checkbox"/> WIRELINE-TYPE

DEPTH (M)	▲ BULK DENSITY (L/M ³) ▲ 1.4 1.8 2.2 2.6			USC	SOIL DESCRIPTION	SAMPLE TYPE	SAMPLE NO	Other comments	DEPTH (FT)
	■ SHEAR STRENGTH (KPC) ■ 100 200 300 400								
	PLASTIC M.C LIQUID								
	40 80 120 160								
0.0					TOPSOIL				0.0
					FILL-CLAY & GRANULAR				
-1.0					SILT-SANDY				5.0
					- TAN				
					- DAMP				
-2.0					CLAY-WITH SILT				10.0
					- STIFF				
					- BROWN				
-3.0					SILT LAYER WITH CLAY				15.0
					- TRANSITION TO GREY CLAY				
					- TILL INCLUSIONS (GREATER WITH DEPTH)				
					- SMALL COBBLES				
-4.0									20.0
-5.0									25.0
-6.0									30.0
-7.0					TILL -SILT WITH CLAY				35.0
					- GREY				
					- COBBLES				
					- WITH GRANULAR				
-8.0									40.0
-9.0									45.0
					-VERY DENSE (DIFFICULT TO DRILL)				
-10.0					AUGER REFUSAL @ 9.60				50.0
					NOTE:NO SLOUGHING				
					NO WATER				
-11.0									55.0
-12.0									60.0
-13.0									65.0
-14.0									70.0

UMA Engineering Ltd.
Winnipeg, Manitoba

COMPLETION DEPTH ** m	COMPLETE
LOGGED BY TH	DWG NO.
	Page 1 of 1

NORTH OF SASKATCHEWAN		SUBTERRANEAN LTD.		BOREHOLE No. G-88-2				
GENSTAR DEVELOPMENTS LTD.				Project No: 08-0898-200-01				
PROJECT ENGINEER: TW				ELEVATION 234.250 (m)				
SAMPLE TYPE <input checked="" type="checkbox"/> GRAB SAMPLE		<input checked="" type="checkbox"/> SEEBLY TUBE		<input checked="" type="checkbox"/> DISTURBED				
		<input type="checkbox"/> NO RECOVERY		<input type="checkbox"/> CORE BARREL				
				<input type="checkbox"/> WIRELINE-TYPE				
DEPTH (m)	▲ BULK DENSITY (1/m ³) ▲ 1.4 1.8 2.2 2.6		USC	SOIL DESCRIPTION	SAMPLE TYPE	SAMPLE NO	Other comments	DEPTH (ft)
	■ SHEAR STRENGTH (kPa) ■ 100 200 300 400							
	PLASTIC M.C. LIQUID 40 80 120 160							
0.0				TOPSOIL				0.0
-1.0				FILL-GRANULAR & CLAY -GRANULAR (3 DIA.)				
-2.0				CLAY-WITH SILT -STIFF -BROWN -TR. TILL INCLUSIONS				5.0
-3.0								10.0
-4.0								15.0
-5.0				-TRANSITION TO GREY CLAY -TILL INCLUSIONS (SMALL SAND & GRAVEL POCKETS)				20.0
-6.0								25.0
-7.0								30.0
-8.0								35.0
-9.0								40.0
-10.0								45.0
-11.0				TILL-GREY -WITH SILT & CLAY -WITH GRANULAR & COBBLES -WET (PAT TEST)				
-12.0				END OF HOLE IN GREY TILL @ 11.28 NOTE: NO SLOUGHING NO WATER IN HOLE				
-13.0								
-14.0								

UMA Engineering Ltd.
Winnipeg, Manitoba

COMPLETION DEPTH ** m	COMPLETE
LOGGED BY TH	DWG NO.
	Page 1 of 1

NORTH OF SASKATCHEWAN		SUBTERRANEAN LTD.		BOREHOLE No. G-88-3	
GENSTAR DEVELOPMENTS LTD.				Project No: 08-0898-266-01	
PROJECT ENGINEER: TW				ELEVATION 234.870 (m)	
SAMPLE TYPE <input checked="" type="checkbox"/> GRAB SAMPLE		<input checked="" type="checkbox"/> SHELBY TUBE		<input checked="" type="checkbox"/> UNSTURBED	
		<input type="checkbox"/> NO RECOVERY		<input type="checkbox"/> CORE BARREL	
				<input type="checkbox"/> WIRELINE-TYPE	

DEPTH (m)	USC	SOIL DESCRIPTION	SAMPLE TYPE	SAMPLE NO	Other comments	DEPTH (#)
0.0		TOPSOIL FILL-CLAY & GRANULAR -GRANULAR TO 3 DIA.				0.0
1.0		SILT-TAN -WET TO PAT TEST				5.0
2.0		CLAY-WITH SILT -STIFF -BROWN -TR. TILL INCLUSIONS				10.0
3.0		-TRANSITION TO GREY CLAY -HIGHLY PLASTIC -TILL INCLUSIONS				15.0
4.0						20.0
5.0						25.0
6.0						30.0
7.0						35.0
8.0						40.0
9.0						45.0
10.0		TILL-SILT WITH CLAY -GREY -WITH GRANULAR & COBBLES -VERY DENSE (DIFFICULT TO DRILL) -DRY TO DAMP				
11.0						
12.0		AUGER REFUSAL @ 10.98 NOTE:NO SLOUGHING WATER ON TIP OF AUGER @ REFUSAL				
13.0						
14.0						

UMA Engineering Ltd. Winnipeg, Manitoba		COMPLETION DEPTH ** m	COMPLETE
LOGGED BY TH	DWG NO.	Page 1 of 1	

NORTH OF SASKATCHEWAN	SUBTERRANEAN LTD.	BOREHOLE No. G-88-5
GENSTAR DEVELOPMENTS LTD.		Project No: 06-0888-266-01
PROJECT ENGINEER: TW		ELEVATION 235.260 (m)

SAMPLE TYPE GRAB SAMPLE SHELBY TUBE DISTURBED NO RECOVERY CORE BARREL WIPELINE-TYPE

DEPTH (m)	USC	SOIL DESCRIPTION	SAMPLE TYPE	SAMPLE NO	Other comments	DEPTH (ft)
0.0		TOPSOIL				0.0
		FILL-WITH CLAY & GRANULAR				
-1.0		SILT-TAN				
		-COARSE				
		-WET (TO PAT TEST)				5.0
-2.0		CLAY-WITH SILT				
		-STIFF				
		-BROWN				
		-TR. TILL INCLUSIONS				10.0
-3.0						
-4.0						
-5.0		-TRANSITION TO GREY CLAY				15.0
		-TILL INCLUSIONS BECOMING LARGER WITH DEPTH				
		-COBBLES				
-6.0						20.0
-7.0		-GRAVEL POCKET +/- .3				
-8.0						25.0
-9.0		TILL-SILT WITH CLAY				
		-GREY				
		-WITH GRANULAR				
		-COBBLES & BOULDERS				30.0
-10.0		AUGER REFUSAL @ 9.15				
		NOTE: NO SLOUGHING				
		TRACE OF WATER				35.0
-11.0						
-12.0						40.0
-13.0						
-14.0						45.0

▲ BULK DENSITY (t/m³) ▲
1.4 1.8 2.2 2.6

■ SHEAR STRENGTH (kPa) ■
100 200 300 400

PLASTIC M.C LIQUID

40 80 120 160

UMA Engineering Ltd.
Winnipeg, Manitoba

COMPLETION DEPTH ** m	COMPLETE
LOGGED BY TW	DWG NO.
	Page 1 of 1

NORTH OF SASKATCHEWAN	SUBTERRANEAN LTD.	BOREHOLE No. G-88-6
GENSTAR DEVELOPMENTS LTD.		Project No: 06 -0696-268-01
PROJECT ENGINEER: TW		ELEVATION 235.650 (m)
SAMPLE TYPE <input checked="" type="checkbox"/> GRAB SAMPLE	<input checked="" type="checkbox"/> SHELLY TUBE	<input checked="" type="checkbox"/> DISTURBED
	<input type="checkbox"/> NO RECOVERY	<input type="checkbox"/> CORE BARREL
		<input type="checkbox"/> WIRELINE-TYPE

DEPTH (M)	USC	SOIL DESCRIPTION	SAMPLE TYPE	SAMPLE NO	Other comments	DEPTH (ft)
0.0		TOPSOIL				0.0
		FILL-CLAY & GRANULAR				
-1.0		SILT-SANDY				5.0
		- TAN				
		- DAMP				
-2.0		CLAY-WITH SILT				
		- STIFF				
		- BROWN				
-3.0		SILT LAYER WITH CLAY				10.0
-4.0		- TRANSITION TO GREY CLAY				
		- TILL INCLUSIONS (GREATER WITH DEPTH)				
		- SMALL COBBLES				
-5.0						
-6.0						
-7.0		TILL -SILT WITH CLAY				25.0
		- GREY				
		- COBBLES				
		- WITH GRANULAR				
-8.0						
-9.0		-VERY DENSE (DIFFICULT TO DRILL)				30.0
-10.0		AUGER REFUSAL @ 9.60				35.0
		NOTE:NO SLOUGHING				
		NO WATER				
-11.0						
-12.0						40.0
-13.0						
-14.0						45.0

UMA Engineering Ltd.
Winnipeg, Manitoba

COMPLETION DEPTH ** m	COMPLETE
LOGGED BY TH	DWG NO.
	Page 1 of 1

NORTH OF SASKATCHEWAN		SUBTERRANEAN LTD.		BOREHOLE No. G-88-7				
GENSTAR DEVELOPMENTS LTD.				Project No: 06-0888-266-01				
PROJECT ENGINEER: TW				ELEVATION 235.540 (m)				
SAMPLE TYPE <input type="checkbox"/> GRAB SAMPLE		<input checked="" type="checkbox"/> SHIELLY TUBE		<input checked="" type="checkbox"/> DISTURBED				
		<input type="checkbox"/> NO RECOVERY		<input type="checkbox"/> CORE BARREL				
				<input type="checkbox"/> WIRELINE-TYPE				
DEPTH (m)	▲ BULK DENSITY (t/m ³) ▲		USC	SOIL DESCRIPTION	SAMPLE TYPE	SAMPLE NO	Other comments	DEPTH (ft)
	PLASTIC	M.C						
	1.4 1.5 2.2 2.6							
	■ SHEAR STRENGTH (kPa) ■							
	100 200 300 400							
	40 80 120 160							
0.0				TOPSOIL				0.0
				FILL-CLAY WITH GRANULAR				
				-TRACE OF TOPSOIL				
1.0				CLAY-WITH SILT				5.0
				-STIFF				
				-BROWN				
2.0								
3.0								10.0
				-TRANSITION TO GREY CLAY				
				-TR. SILT POCKETS				
				-WITH TILL INCLUSIONS				
				(LARGER WITH DEPTH)				
4.0								
5.0								
6.0								20.0
				-CLAY BECOMING SOFTER WITH DEPTH				
7.0				TILL-WITH SILT AND CLAY				25.0
				-GREY				
				-GRANULAR & COBBLES				
				-WET TO PAT TEST				
8.0								
9.0								30.0
10.0								
				AUGER REFUSAL @ 9.45				35.0
				NOTE:NO INDICATION OF WATER				
				NO SLOUGHING				
11.0								
12.0								40.0
13.0								
14.0								45.0

UMA Engineering Ltd.
Winnipeg, Manitoba

COMPLETION DEPTH ** m

COMPLETE

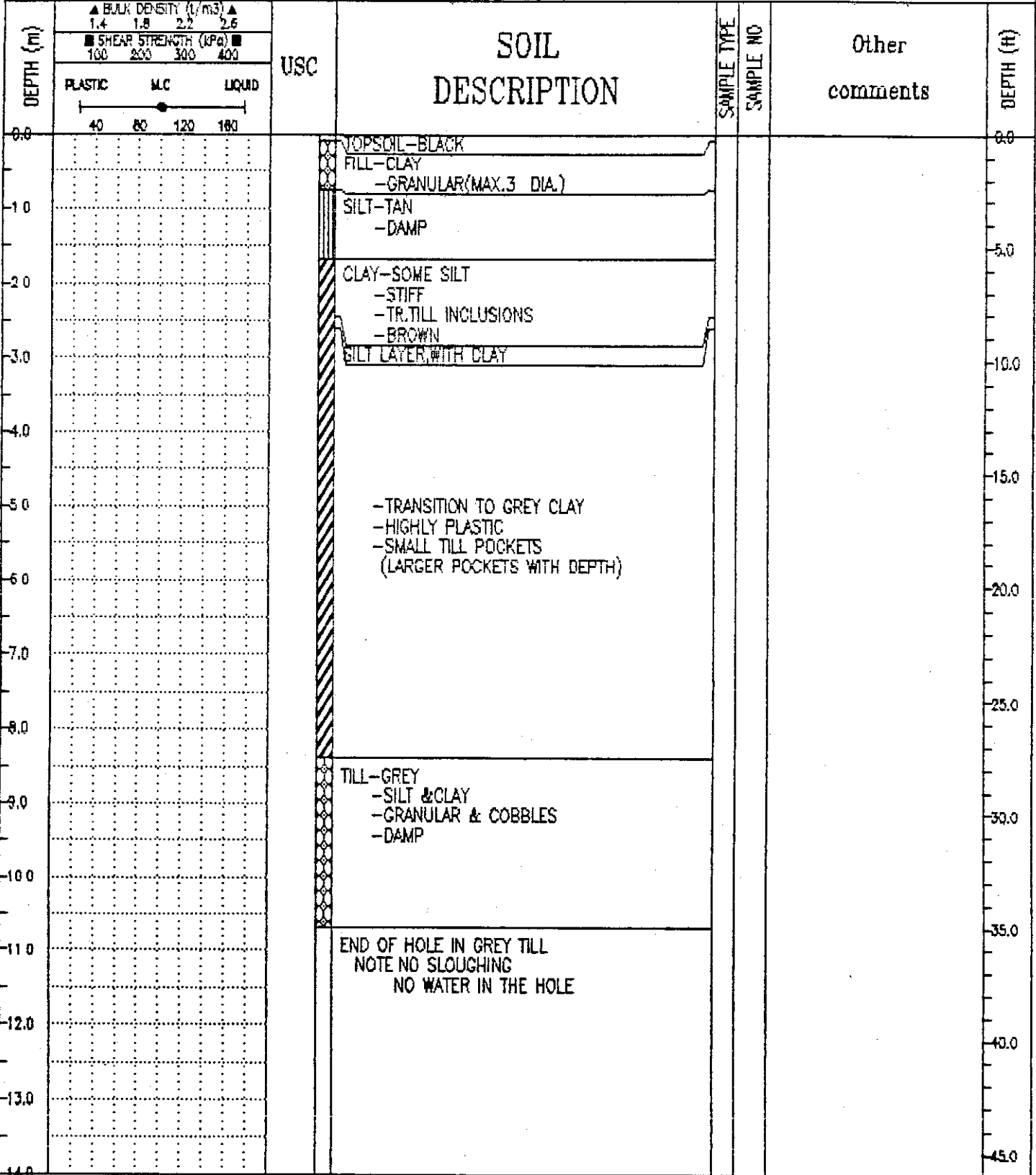
LOGGED BY TH

DWG NO.

Page 1 of 1

NORTH OF SASKATCHEWAN	SUBTERRANEAN LTD.	BOREHOLE No. G-88-1
GENSTAR DEVELOPMENTS LTD.		Project No: 06-0898-266-01
PROJECT ENGINEER: TW		ELEVATION 235.840 (m)

SAMPLE TYPE GRAB SAMPLE SHELEY TUBE DISTURBED NO RECOVERY CORE BARREL WIRELOG-TYPE



UMA Engineering Ltd.
Winnipeg, Manitoba

COMPLETION DEPTH * * m	COMPLETE
LOGGED BY TH	DWG NO.

Page 1 of 1

NORTH OF SASKATCHEWAN		SUBTERRANEAN LTD.		BOREHOLE No. G-88-7				
GENSTAR DEVELOPMENTS LTD.				Project No: 06-0888-266-01				
PROJECT ENGINEER: TW				ELEVATION 235.540 (m)				
SAMPLE TYPE <input type="checkbox"/> GRAB SAMPLE		<input checked="" type="checkbox"/> SHIELLY TUBE		<input checked="" type="checkbox"/> DISTURBED				
		<input type="checkbox"/> NO RECOVERY		<input type="checkbox"/> CORE BARREL				
				<input type="checkbox"/> WIRELINE-TYPE				
DEPTH (m)	▲ BULK DENSITY (t/m ³) ▲ 1.4 1.5 2.2 2.6		USC	SOIL DESCRIPTION	SAMPLE TYPE	SAMPLE NO	Other comments	DEPTH (ft)
	■ SHEAR STRENGTH (kPa) ■ 100 200 300 400							
	PLASTIC	M.C	LIQUID					
	40 80 120 160							
0.0				TOPSOIL				0.0
				FILL-CLAY WITH GRANULAR -TRACE OF TOPSOIL				
1.0				CLAY-WITH SILT -STIFF -BROWN				5.0
2.0								
3.0								
4.0				-TRANSITION TO GREY CLAY -TR. SILT POCKETS -WITH TILL INCLUSIONS (LARGER WITH DEPTH)				10.0
5.0								
6.0								
7.0				-CLAY BECOMING SOFTER WITH DEPTH				20.0
8.0				TILL-WITH SILT AND CLAY -GREY -GRANULAR & COBBLES -WET TO PAT TEST				25.0
9.0								30.0
10.0				AUGER REFUSAL @ 9.45 NOTE:NO INDICATION OF WATER NO SLOUGHING				35.0
11.0								
12.0								40.0
13.0								
14.0								45.0

UMA Engineering Ltd.
Winnipeg, Manitoba

COMPLETION DEPTH ** m

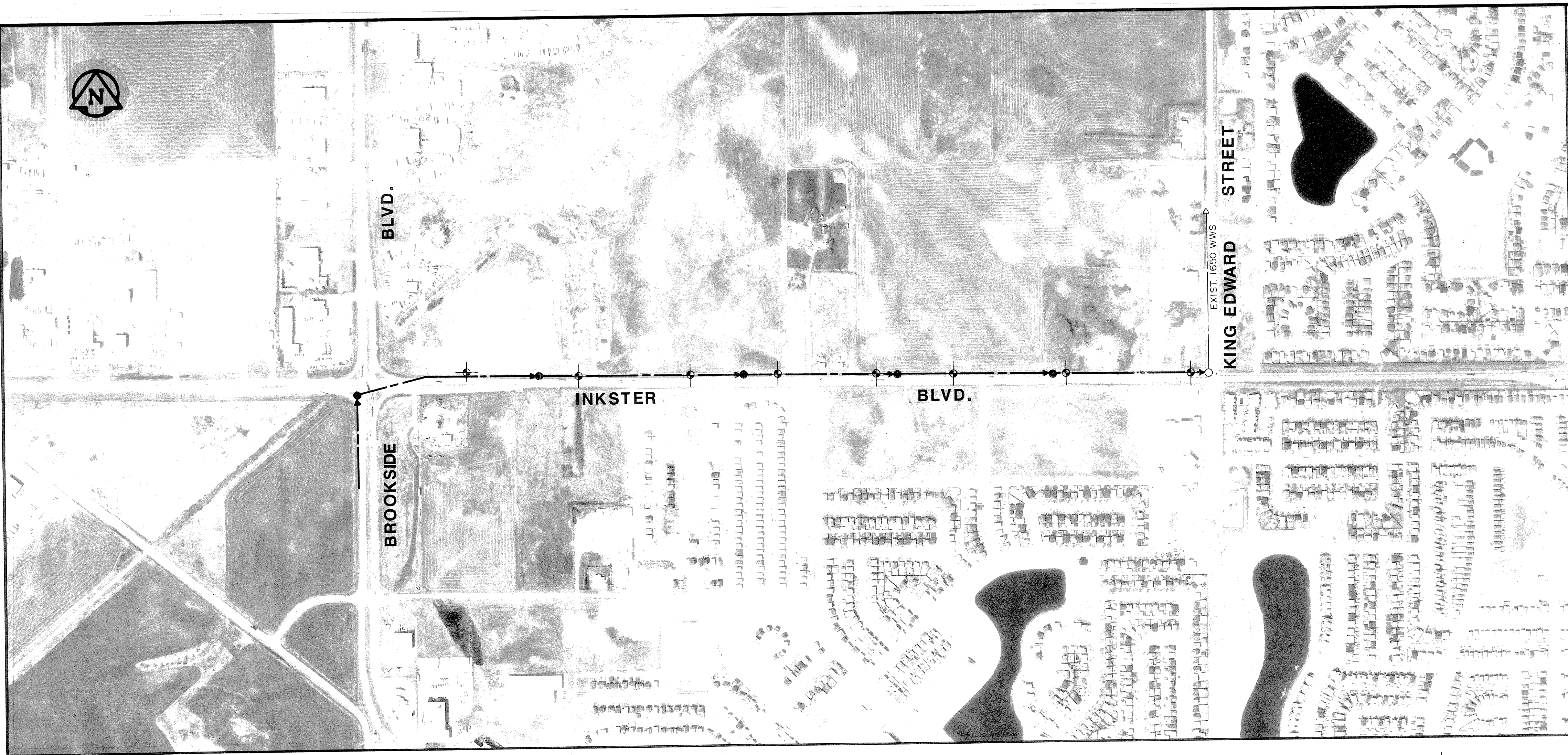
COMPLETE

LOGGED BY TH

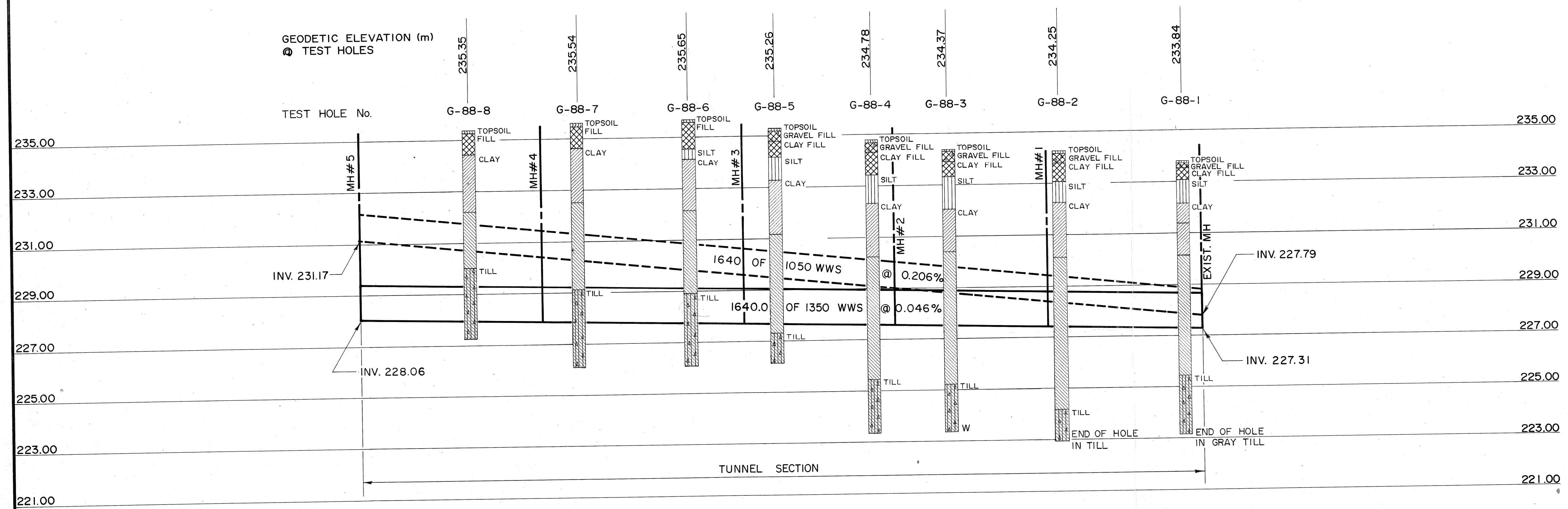
DWG NO.

Page 1 of 1

NORTH OF SASKATCHEWAN		SUBTERRANEAN LTD.		BOREHOLE No. G-88-8			
GENSTAR DEVELOPMENTS LTD.				Project No: 00-0000-200-01			
PROJECT ENGINEER: TW				ELEVATION 235.950 (m)			
SAMPLE TYPE <input checked="" type="checkbox"/> GRAB SAMPLE		<input checked="" type="checkbox"/> SHELBY TUBE		<input checked="" type="checkbox"/> DISTURBED			
		<input type="checkbox"/> NO RECOVERY		<input type="checkbox"/> CORE BARREL			
				<input type="checkbox"/> WIPELINE-TYPE			
DEPTH (M) ▲ BULK DENSITY (1/m ³) ▲ 1.4 1.8 2.2 2.6 ■ SHEAR STRENGTH (KPa) ■ 100 200 300 400	USC	SOIL DESCRIPTION		SAMPLE TYPE	SAMPLE NO	Other comments	DEPTH (ft)
		40 80 120 160					
0.0		TOPSOIL FILL-CLAY WITH GRANULAR					0.0
-1.0		CLAY-SOME SILT -STIFF -BROWN -TRACE TILL INCLUSIONS					5.0
-2.0							10.0
-3.0							15.0
-4.0							20.0
-5.0							25.0
-6.0		TILL-SILT AND CLAY -LT BROWN -SOME GRANULAR					30.0
-7.0							35.0
-8.0							40.0
-9.0							45.0
-10.0							50.0
-11.0							55.0
-12.0							60.0
-13.0							65.0
-14.0		AUGER REFUSAL @ 8.08 NOTE: NO SLOUGHING NO SEEPAGE					70.0
UMA Engineering Ltd. Winnipeg, Manitoba				COMPLETION DEPTH ** m		COMPLETE	
				LOGGED BY TH		DWG NO.	
						Page 1 of 1	



TEST HOLE LOCATION

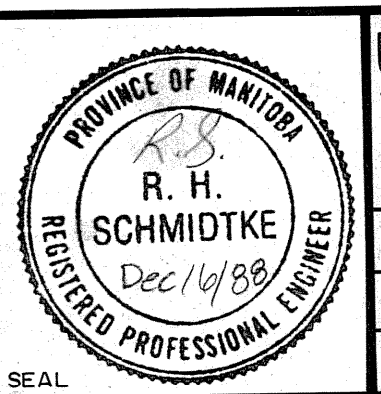
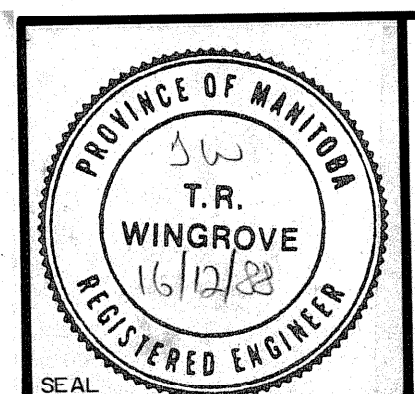


-ALL HOLES AUGURED TO REFUSAL UNLESS OTHERWISE NOTED.

NOTE: WWS = WASTE WATER SEWER

REV.	DESCRIPTION	DWN.	APP.	DATE
A	ADDED ALTERNATIVE 1050 WWS			12/12/89

- LEGEND**
- FILL
 - TOPSOIL
 - SILT
 - BROWN CLAY
 - GREY CLAY
 - TILL
 - W - WATER SEEPAGE



UMA Engineering Ltd.
Engineers & Planners
1479 Buffalo Place, Winnipeg, Manitoba, Canada R3T 1L7

APPROVED BY: DATE: 12/12/89

DRAWN BY: MAG DESIGNED BY:

CHECKED BY: TH CHECKED BY:

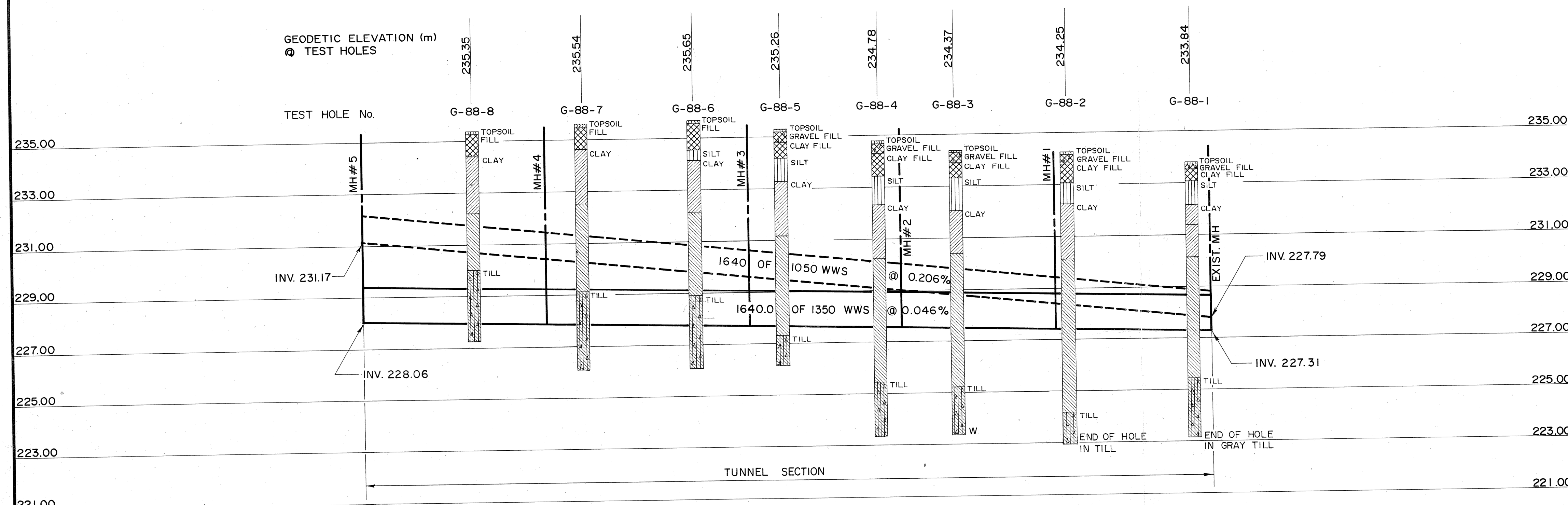
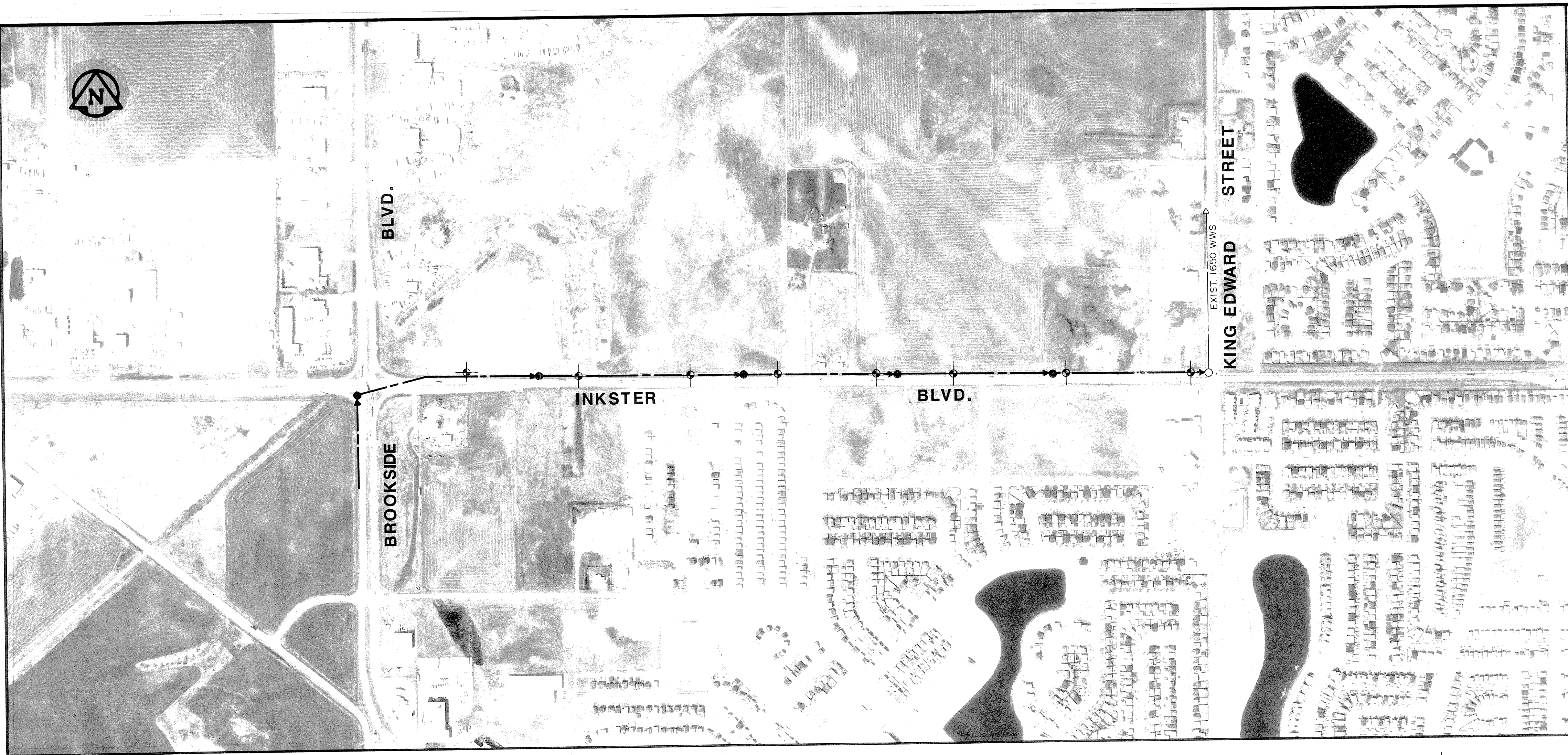
HORIZ. 1:5000 SCALE: VERT. 1:100 JOB No. 06-0699-266-01-01

PROPERTY NORTH OF SASKATCHEWAN AVE.

TEST HOLES FOR PROPOSED SEWER
INKSTER BLVD (P. R. 221)
KING EDWARD ST. TO BROOKSIDE BLVD.

DWS. No. 02

NORTH OF SASKATCHEWAN		SUBTERRANEAN LTD.		BOREHOLE No. G-88-8				
GENSTAR DEVELOPMENTS LTD.				Project No: 00-0000-200-01				
PROJECT ENGINEER: TW				ELEVATION 235.950 (m)				
SAMPLE TYPE <input checked="" type="checkbox"/> GRAB SAMPLE		<input checked="" type="checkbox"/> SHELBY TUBE		<input checked="" type="checkbox"/> DISTURBED				
		<input type="checkbox"/> NO RECOVERY		<input type="checkbox"/> CORE BARREL				
				<input type="checkbox"/> WIPELINE-TYPE				
DEPTH (M)	▲ BULK DENSITY (1/m ³) ▲ 1.4 1.8 2.2 2.6		USC	SOIL DESCRIPTION	SAMPLE TYPE	SAMPLE NO	Other comments	DEPTH (ft)
	■ SHEAR STRENGTH (KPa) ■ 100 200 300 400							
	PLASTIC MC LIQUID 40 80 120 160							
0.0			TOPSOIL				0.0	
-1.0			FILL-CLAY WITH GRANULAR				-1.0	
-2.0			CLAY-SOME SILT -STIFF -BROWN -TRACE TILL INCLUSIONS				-2.0	
-3.0			-TRANSITION TO GREY CLAY -TILL INCLUSIONS (GRANULAR IN TILL INCLUSIONS)				-3.0	
-4.0							-4.0	
-5.0							-5.0	
-6.0			TILL-SILT AND CLAY -LT BROWN -SOME GRANULAR				-6.0	
-7.0							-7.0	
-8.0			-DENSE -COBBLES & BOULDERS				-8.0	
-9.0			AUGER REFUSAL @ 8.08 NOTE:NO SLOUGHING NO SEEPAGE				-9.0	
-10.0							-10.0	
-11.0							-11.0	
-12.0							-12.0	
-13.0							-13.0	
-14.0							-14.0	
UMA Engineering Ltd. Winnipeg, Manitoba				COMPLETION DEPTH ** m		COMPLETE		
				LOGGED BY TH		DWG NO.		
						Page 1 of 1		



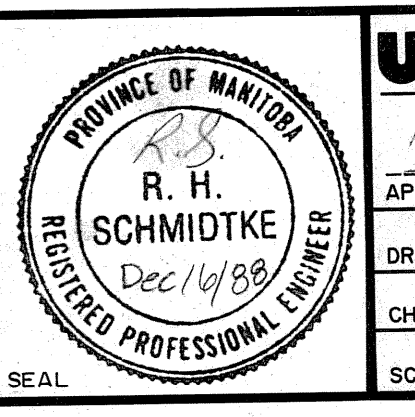
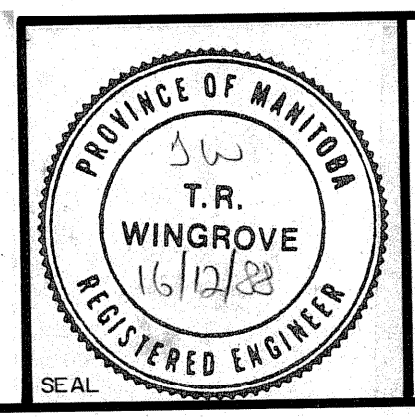
-ALL HOLES AUGURED TO REFUSAL UNLESS OTHERWISE NOTED.

NOTE: WWS = WASTE WATER SEWER

REV.	DESCRIPTION	DWN.	APP.	DATE
A	ADDED ALTERNATIVE 1050 WWS			12/12/89

LEGEND

	- FILL		- BROWN CLAY
	- TOPSOIL		- GREY CLAY
	- SILT		- TILL
W	- WATER SEEPAGE		



UMA Engineering Ltd.
Engineers & Planners
1479 Buffalo Place, Winnipeg, Manitoba, Canada R3T 1L7

APPROVED BY: *[Signature]* DATE: *12/12/89*

DRAWN BY: MAG DESIGNED BY: *[Signature]*

CHECKED BY: TH CHECKED BY: *[Signature]*

HORIZ. 1:5000 SCALE: VERT. 1:100 JOB No. 06-0699-266-01-01

PROPERTY NORTH OF SASKATCHEWAN AVE.

TEST HOLES FOR PROPOSED SEWER
INKSTER BLVD (P. R. 221)
KING EDWARD ST. TO BROOKSIDE BLVD.

DWS. No. 02