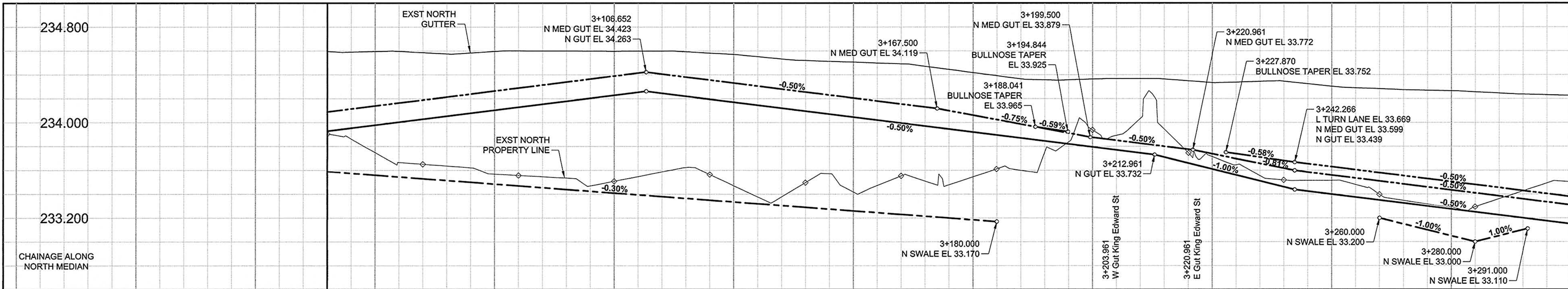
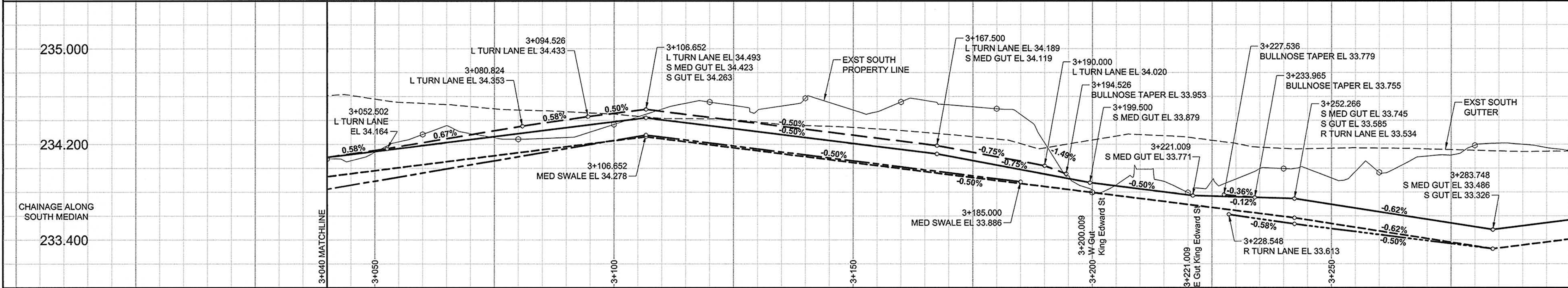
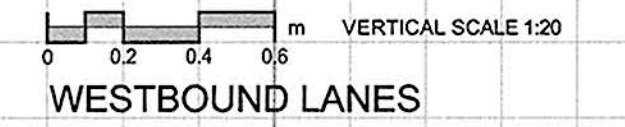


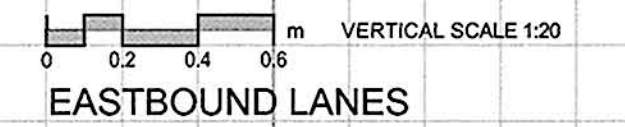
A1 SIZE 23.4" x 33.1" (594mm x 841mm)



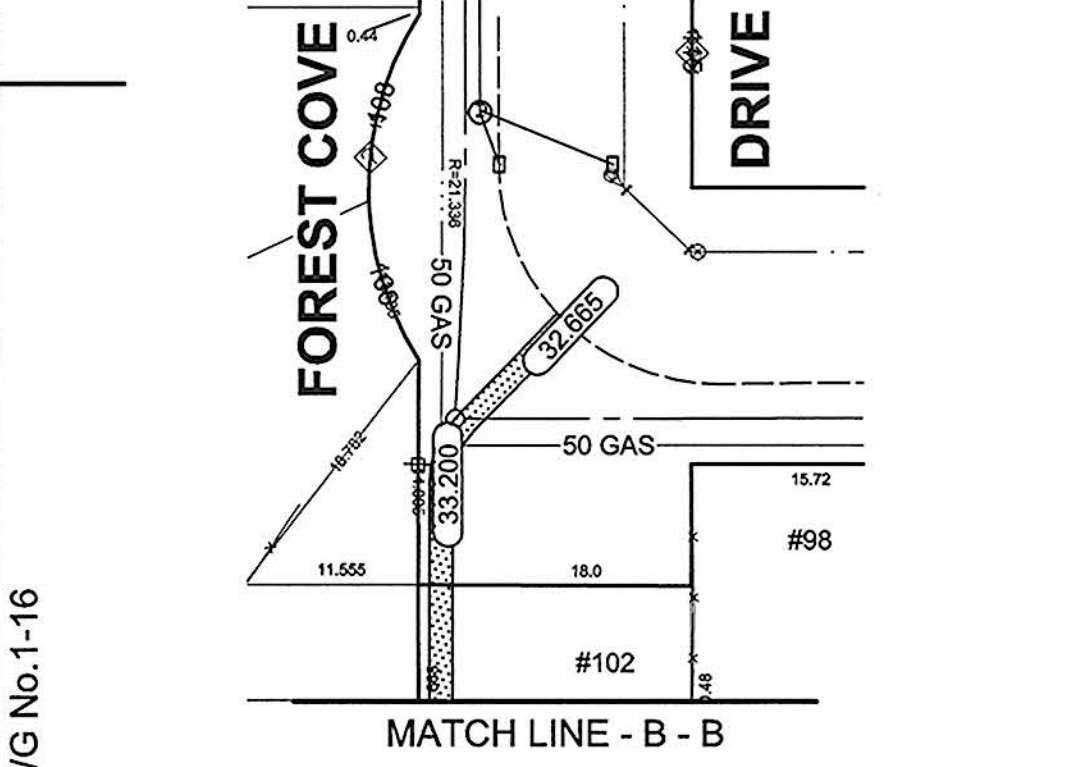
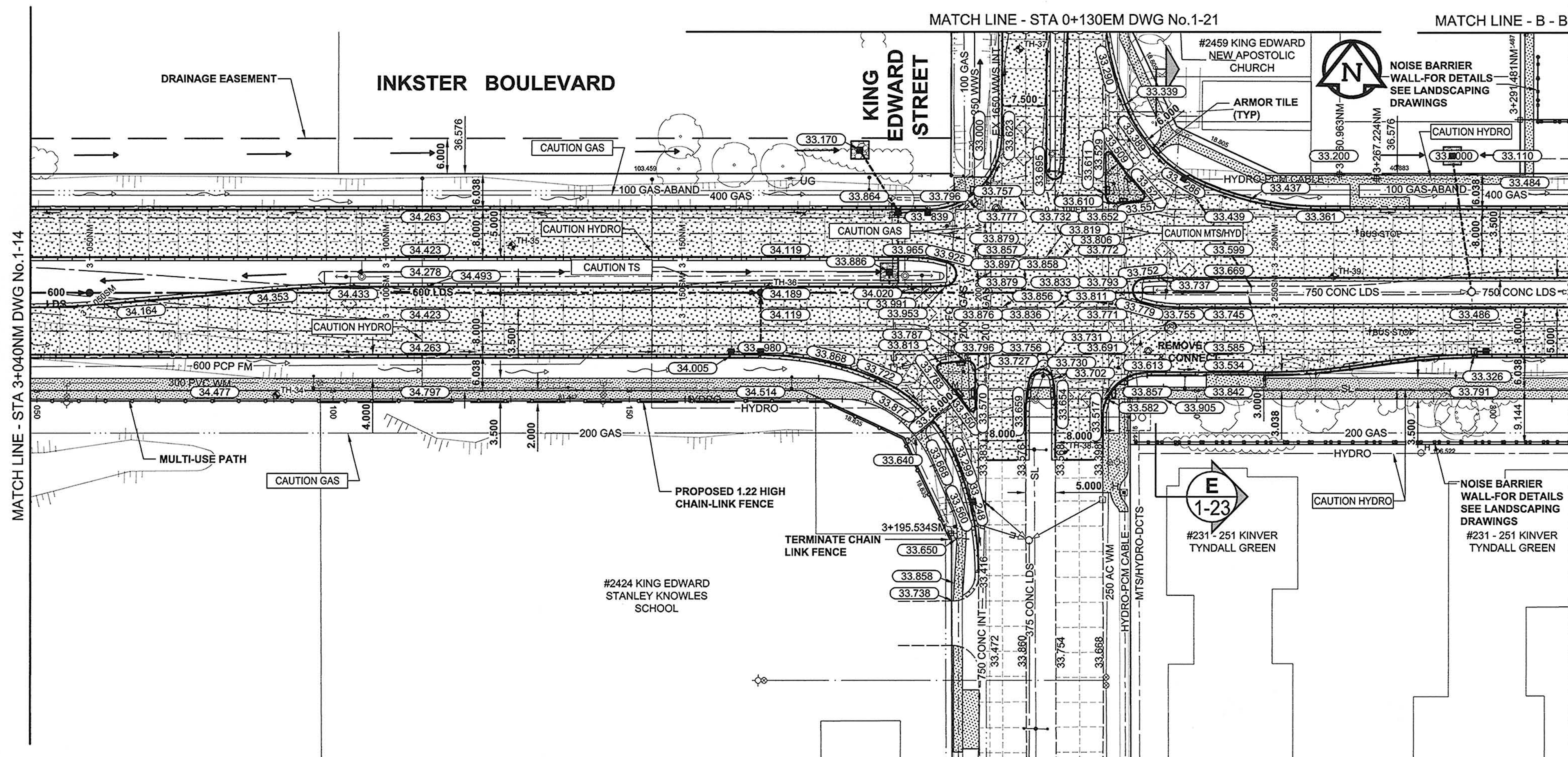
**PAVEMENT PROFILE**



**PAVEMENT PROFILE**



PLOT: 1009416 3:08:02 PM



- NOTES**
1. ADJUST EXST. MH AND CB RIMS TO NEW GRADES AS SHOWN.
  2. LIGHT STANDARDS, HYDRO POLES, AND ANCHORS MAY REQUIRE TEMPORARY SUPPORT/REMOVAL OR REPLACEMENT AT THE EXPENSE OF THE CONTRACTOR. LIGHT STANDARD BASES TO BE PERMANENTLY REMOVED FROM SITE BY CONTRACTOR AT LOCATIONS INDICATED.
  3. CONTRACTOR SHALL TAKE PRECAUTIONARY STEPS TO PROTECT EXISTING BOWLEND TREES FROM DAMAGE RESULTING FROM CONSTRUCTION ACTIVITIES WITHIN THE LIMITS OF CONSTRUCTION AS OUTLINED IN THE SPECIFICATIONS.
  4. ADD 200.000m TO ABBREVIATED ELEVATIONS TO OBTAIN GEODETIC ELEVATIONS.
  5. CONTRACTOR SHALL TAKE PRECAUTIONARY STEPS TO CONTROL EROSION BY INSTALLING STRAW WATTLE AT LOCATIONS DIRECTED BY CONTRACT ADMINISTRATOR.

Scale: 0 5 10 15 m H = 1:500

**AECOM**  
Certificate of Authorization  
AECOM Canada Ltd.  
No. 4671 Date: April 19/20

**METRIC**  
WHOLE NUMBERS INDICATE MILLIMETRES  
DECIMAL NUMBERS INDICATE METRES

BID OPPORTUNITY NO. 232-2010

---	GAS	○	MANHOLE	●	CONCRETE PAVEMENT	---	LOCATION APPROVED
---	MTS	□	CATCH BASIN / CATCH PIT	▲	ASPHALT PAVEMENT	---	UNDERGROUND STRUCTURES
---	HYDRO	△	CURB INLET WITH BOX	■	CONC. SIDEWALK/MEDIAN	---	BM REFER TO ELEV DWG 1-1
---	CAT/WO	○	TREE	■	PAVING STONE	---	DESIGNED BY WRJ
---	TRAFFIC SIGNALS/PIT	⊕	TEST HOLE	■	GRAVEL	---	CHECKED BY RPB
---	LAND DRAINAGE SEWER	⊕	PROPERTY LINE	---	RAMP CURB	---	APPROVED BY TGS
---	SANITARY/COMBINED SEWER	⊕	SURVEY BAR	---	PLANING/REMOVAL	---	RELEASED FOR CONSTRUCTION
---	SSP/DCP	⊕	FENCE	---	---	---	DATE April 19, 2010
---	WATERMAIN	⊕	BOC/EOPAVT	---	---	---	DATE April 19, 2010
---	SUBDRAIN	⊕	ELEVATION (33.100)	---	---	---	---
---	DITCH	---	TRAFFIC SIGN	---	---	---	---
---	EXISTING	---	LEGEND - PLAN	---	---	---	---
---	NEW	---	LEGEND - PLAN	---	---	---	---

**LOCATION APPROVED UNDERGROUND STRUCTURES**

SUPR. U/G STRUCTURES DATE COMMITTEE

**NOTE:**  
LOCATION OF UNDERGROUND STRUCTURES AS SHOWN ARE BASED ON THE BEST INFORMATION AVAILABLE. BUT NO GUARANTEE IS GIVEN THAT ALL EXISTING UTILITIES ARE SHOWN OR THAT THE GIVEN LOCATIONS ARE EXACT. CONFIRMATION OF EXISTENCE AND EXACT LOCATION OF ALL SERVICES MUST BE OBTAINED FROM THE INDIVIDUAL UTILITIES BEFORE PROCEEDING WITH CONSTRUCTION.

0	ISSUED FOR CONSTRUCTION	10/04/21	---	---	---
NO.	REVISIONS	YYMMDD	BY	---	---

**AECOM**

DESIGNED BY WRJ  
DRAWN BY DID/KLC  
HOR. SCALE 1:500  
VERT. SCALE 1:20  
DATE 10/04/21

CHECKED BY RPB  
APPROVED BY TGS  
RELEASED FOR CONSTRUCTION  
DATE April 19, 2010

PROFESSIONAL'S SEAL

PROVINCE OF MANITOBA  
REGISTERED PROFESSIONAL ENGINEER  
R. P. BRUCE

CONSULTANT DRAWING NO. 0265-411-00-04-CT1015\_RX.dwg

**THE CITY OF WINNIPEG**  
PUBLIC WORKS DEPARTMENT  
ENGINEERING DIVISION

**INKSTER BOULEVARD WIDENING PROJECT**  
BROOKSIDE BOULEVARD TO KEEWATIN STREET  
HORIZONTAL AND VERTICAL ALIGNMENT  
STA 3+040 TO STA 3+300

CITY DRAWING NUMBER P-3301-47  
SHEET 15 OF 82  
DRAWING No. 1-15 REV 0