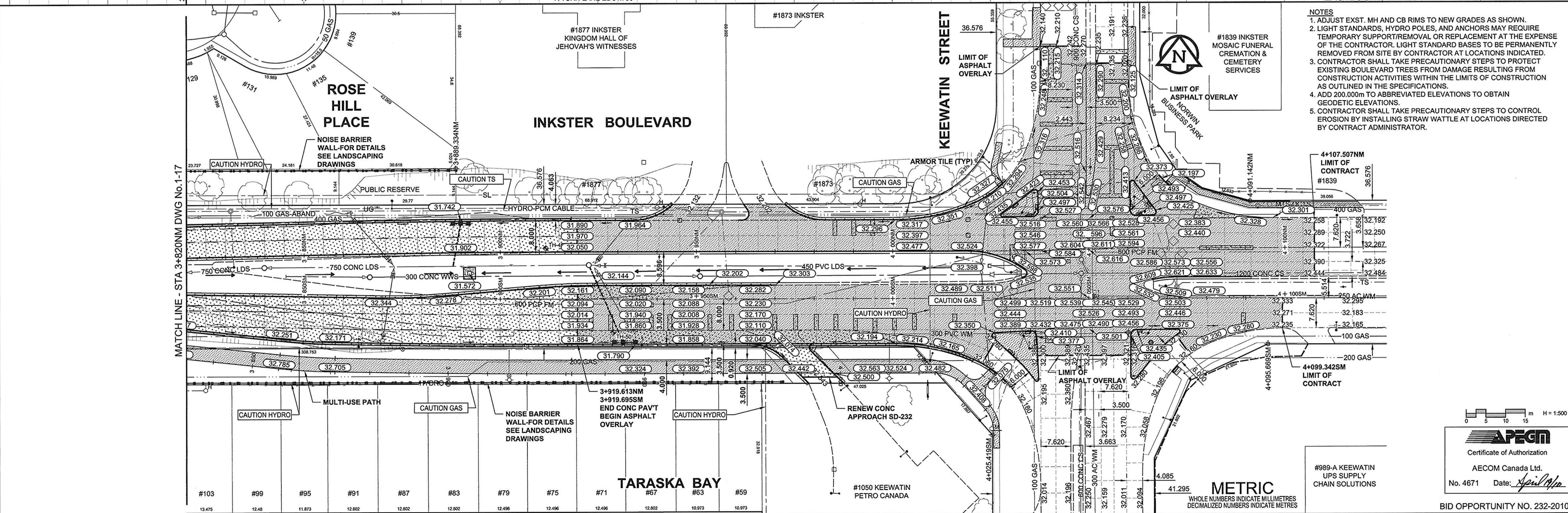
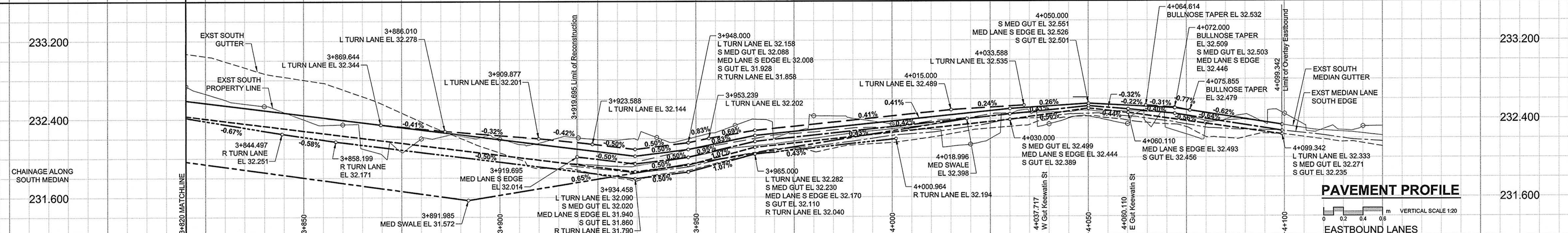
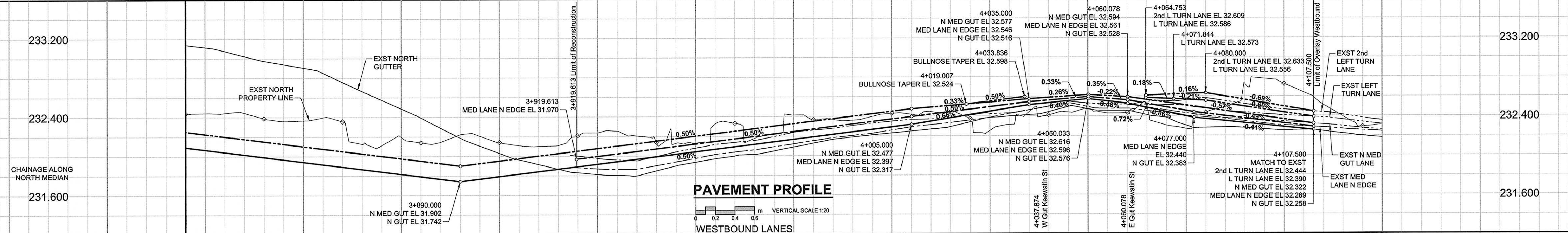


A1 SIZE 23.4" x 33.1" (594mm x 841mm)

PLOT: 100416 3:10:20 PM

AECOM FILE NAME: 0265-411-00_04-CT1018_RX.dwg Saved By: dazspodd



- NOTES**
- ADJUST EXST. MH AND CB RIMS TO NEW GRADES AS SHOWN.
 - LIGHT STANDARDS, HYDRO POLES, AND ANCHORS MAY REQUIRE TEMPORARY SUPPORT/REMOVAL OR REPLACEMENT AT THE EXPENSE OF THE CONTRACTOR. LIGHT STANDARD BASES TO BE PERMANENTLY REMOVED FROM SITE BY CONTRACTOR AT LOCATIONS INDICATED.
 - CONTRACTOR SHALL TAKE PRECAUTIONARY STEPS TO PROTECT EXISTING BOULEVARD TREES FROM DAMAGE RESULTING FROM CONSTRUCTION ACTIVITIES WITHIN THE LIMITS OF CONSTRUCTION AS OUTLINED IN THE SPECIFICATIONS.
 - ADD 200.000m TO ABBREVIATED ELEVATIONS TO OBTAIN GEODETIC ELEVATIONS.
 - CONTRACTOR SHALL TAKE PRECAUTIONARY STEPS TO CONTROL EROSION BY INSTALLING STRAW WATTLE AT LOCATIONS DIRECTED BY CONTRACT ADMINISTRATOR.

AECOM
Certificate of Authorization
AECOM Canada Ltd.
No. 4671 Date: April 19, 2020

#989-A KEEWATIN UPS SUPPLY CHAIN SOLUTIONS

BID OPPORTUNITY NO. 232-2010

—	GAS	○	MANHOLE	●	CONCRETE PAVEMENT	□	LOCATION APPROVED
—	MTS	□	CATCH BASIN / CATCH PIT	■	ASPHALT PAVEMENT	□	UNDERGROUND STRUCTURES
—	HYDRO	△	CURB INLET WITH BOX	▲	CONC. SIDEWALK/MEDIAN	□	SUPR. U/G STRUCTURES DATE COMMITTEE
—	CATV/FO	○	TREE	▲	PAVING STONE	□	NOTE:
—	TRAFFIC SIGNALS/PIT	⊕	TEST HOLE	▲	GRAVEL	□	LOCATION OF UNDERGROUND STRUCTURES AS SHOWN ARE BASED ON THE BEST INFORMATION AVAILABLE BUT NO GUARANTEE IS GIVEN THAT ALL EXISTING UTILITIES ARE SHOWN OR THAT THE GIVEN LOCATIONS ARE EXACT. CONFIRMATION OF EXISTENCE AND EXACT LOCATION OF ALL SERVICES MUST BE OBTAINED FROM THE INDIVIDUAL UTILITIES BEFORE PROCEEDING WITH CONSTRUCTION.
—	LAND DRAINAGE SEWER	⊕	PROPERTY LINE	▲	RAMP CURB	□	
—	SANITARY/COMBINED SEWER	⊕	SURVEY BAR	▲	PLANING/REMOVAL	□	
—	SSP/DCP	⊕	FENCE	▲		□	
—	WATERMAIN	⊕	BOC/EOPAVT	▲		□	
—	SUBDRAIN	⊕	ELEVATION	▲		□	
—	DITCH	⊕	TRAFFIC SIGN	▲		□	
—	EXISTING	LEGEND - PLAN	NEW	EXISTING	LEGEND - PLAN	NEW	

DESIGNED BY	WRJ	CHECKED BY	RPB
DRAWN BY	DID/KLC	APPROVED BY	TGS
HOR. SCALE	1:500	RELEASED FOR CONSTRUCTION	
VERT. SCALE	1:20	DATE	April 19, 2020
DATE	10/04/21		

AECOM

PROFESSIONAL'S SEAL
R. P. BRUCE
REGISTERED PROFESSIONAL ENGINEER

CONSULTANT DRAWING NO.
0265-411-00_04-CT1018_RX.dwg

THE CITY OF WINNIPEG
PUBLIC WORKS DEPARTMENT
ENGINEERING DIVISION

INKSTER BOULEVARD WIDENING PROJECT
BROOKSIDE BOULEVARD TO KEEWATIN STREET
HORIZONTAL AND VERTICAL ALIGNMENT
STA 3+820 TO KEEWATIN STREET

CITY DRAWING NUMBER P-3301-50
SHEET 18 OF 82
DRAWING No. 1-18
REV 0