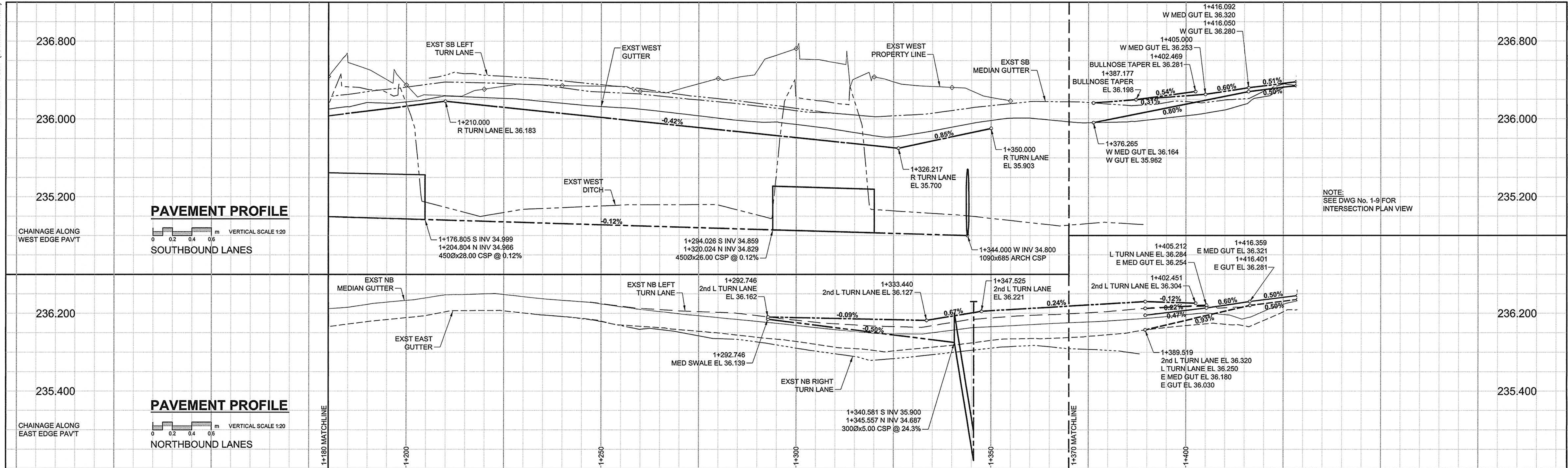


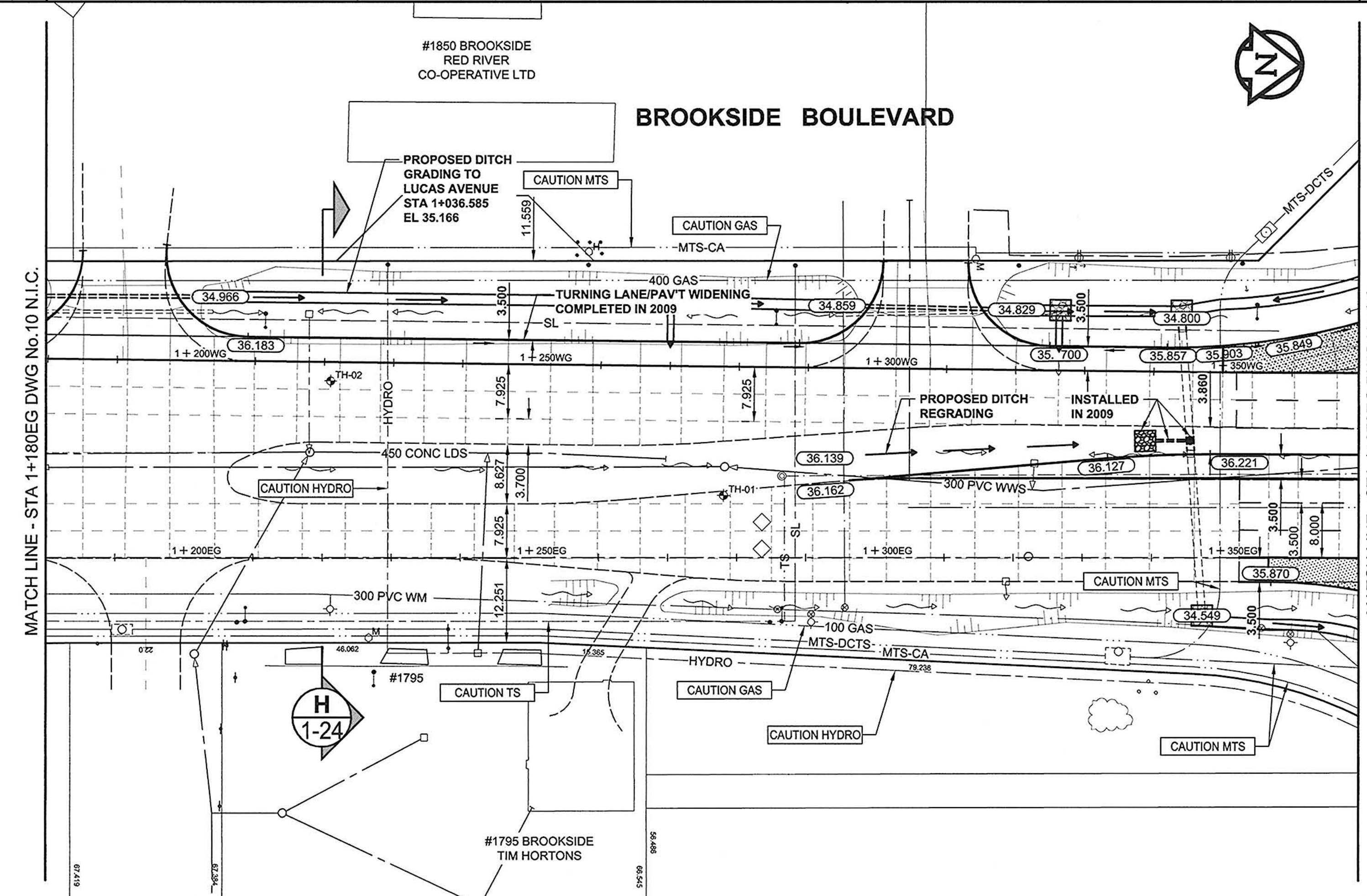
A1 SIZE 23.4" x 33.1" (594mm x 841mm)

PLOT: 10/04/19 2:40:19 PM

AECOM FILE NAME: 0265-411-00_04-CT1020_RX.dwg Saved By: dsszppdd



NOTE:
SEE DWG No. 1-9 FOR
INTERSECTION PLAN VIEW



- NOTES**
- ADJUST EXST. MH AND CB RIMS TO NEW GRADES AS SHOWN.
 - LIGHT STANDARDS, HYDRO POLES, AND ANCHORS MAY REQUIRE TEMPORARY SUPPORT/REMOVAL OR REPLACEMENT AT THE EXPENSE OF THE CONTRACTOR. LIGHT STANDARD BASES TO BE PERMANENTLY REMOVED FROM SITE BY CONTRACTOR AT LOCATIONS INDICATED.
 - CONTRACTOR SHALL TAKE PRECAUTIONARY STEPS TO PROTECT EXISTING BOULEVARD TREES FROM DAMAGE RESULTING FROM CONSTRUCTION ACTIVITIES WITHIN THE LIMITS OF CONSTRUCTION AS OUTLINED IN THE SPECIFICATIONS.
 - ADD 200.000m TO ABBREVIATED ELEVATIONS TO OBTAIN GEODETIC ELEVATIONS.
 - CONTRACTOR SHALL TAKE PRECAUTIONARY STEPS TO CONTROL EROSION BY INSTALLING STRAW WATTLE AT LOCATIONS DIRECTED BY CONTRACT ADMINISTRATOR.

Scale: 0 5 10 15 m H=1:500

AECOM
Certificate of Authorization
AECOM Canada Ltd.
No. 4671 Date: April 19/20

METRIC
WHOLE NUMBERS INDICATE MILLIMETRES
DECIMALIZED NUMBERS INDICATE METRES

---	GAS	○	MANHOLE	●	CONCRETE PAVEMENT	---	LOCATION APPROVED	BM REFER TO	<p>This drawing has been prepared for the use of AECOM's client and may not be used, reproduced or relied upon by third parties, except as agreed by AECOM and its client, as required by law or for use by governmental reviewing agencies. AECOM accepts no responsibility, and denies any liability whatsoever, to any party that modifies this drawing without AECOM's express written consent. Do not scale this document. All measurements must be obtained from stated dimensions.</p> <p>AECOM</p> <p>DESIGNED BY: WRJ DRAWN BY: DID/KLC HOR. SCALE: 1:500 VERT. SCALE: 1:20 DATE: 10/04/21</p> <p>CHECKED BY: RPB APPROVED BY: TGS RELEASED FOR CONSTRUCTION: [Signature] DATE: April 19, 2020</p> <p>PROFESSIONAL'S SEAL: R. P. BRUCE CONSULTANT DRAWING NO. 0265-411-00_04-CT1020_RX.dwg</p>
---	MTS	□	CATCH BASIN / CATCH PIT	■	ASPHALT PAVEMENT	---	UNDERGROUND STRUCTURES	ELEV DWG 1-1	
---	HYDRO	△	CURB INLET WITH BOX	▲	CONC. SIDEWALK/MEDIAN	---	SUPR. U/G STRUCTURES	DATE	
---	CAT/W/O	○	TREE	○	PAVING STONE	---	COMMITTEE		
---	TRAFFIC SIGNALS/PIT	⊕	TEST HOLE	⊕	GRAVEL	---	NOTE:		
---	LAND DRAINAGE SEWER	⊕	PROPERTY LINE	---	RAMP CURB	---	LOCATION OF UNDERGROUND STRUCTURES		
---	SANITARY/COMBINED SEWER	⊕	SURVEY BAR	---	PLANING/REMOVAL	---	AS SHOWN ARE BASED ON THE BEST		
---	SSP/DCP	---	FENCE	---		---	INFORMATION AVAILABLE, BUT NO		
---	WATERMAIN	---	BOC/EOPAVT	---		---	GUARANTEE IS GIVEN THAT ALL EXISTING		
---	SUBDRAIN	---	ELEVATION	---		---	LOCATIONS ARE SHOWN OR THAT THE GIVEN		
---	DITCH	---	TRAFFIC SIGN	---		---	LOCATIONS ARE EXACT. CONFIRMATION OF		
---	EXISTING	---	LEGEND - PLAN	---		---	EXISTENCE AND EXACT LOCATION OF ALL		
---	NEW	---	LEGEND - PLAN	---		---	SERVICES MUST BE OBTAINED FROM THE		
---	EXISTING	---	LEGEND - PLAN	---		---	INDIVIDUAL UTILITIES BEFORE PROCEEDING		
---	NEW	---	LEGEND - PLAN	---		---	WITH CONSTRUCTION.		

THE CITY OF WINNIPEG
PUBLIC WORKS DEPARTMENT
ENGINEERING DIVISION

**INKSTER BOULEVARD
WIDENING PROJECT
BROOKSIDE BOULEVARD
TO KEEWATIN STREET**

HORIZONTAL AND VERTICAL ALIGNMENT
BROOKSIDE BLVD STA 1+180EG TO STA 1+370EG

CITY DRAWING NUMBER: P-3301-51
SHEET 19 OF 82
DRAWING No. 1-19 REV 0

BID OPPORTUNITY NO. 232-2010