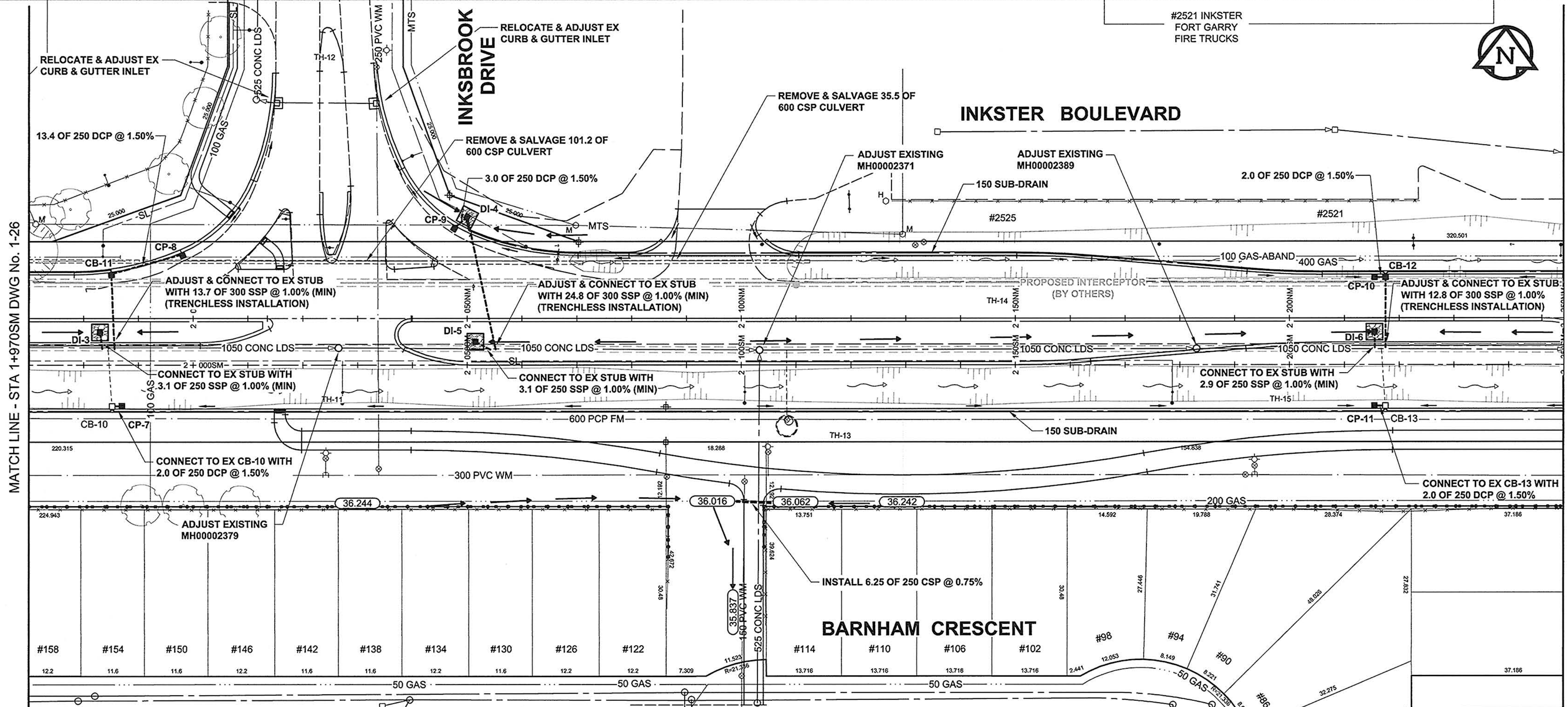
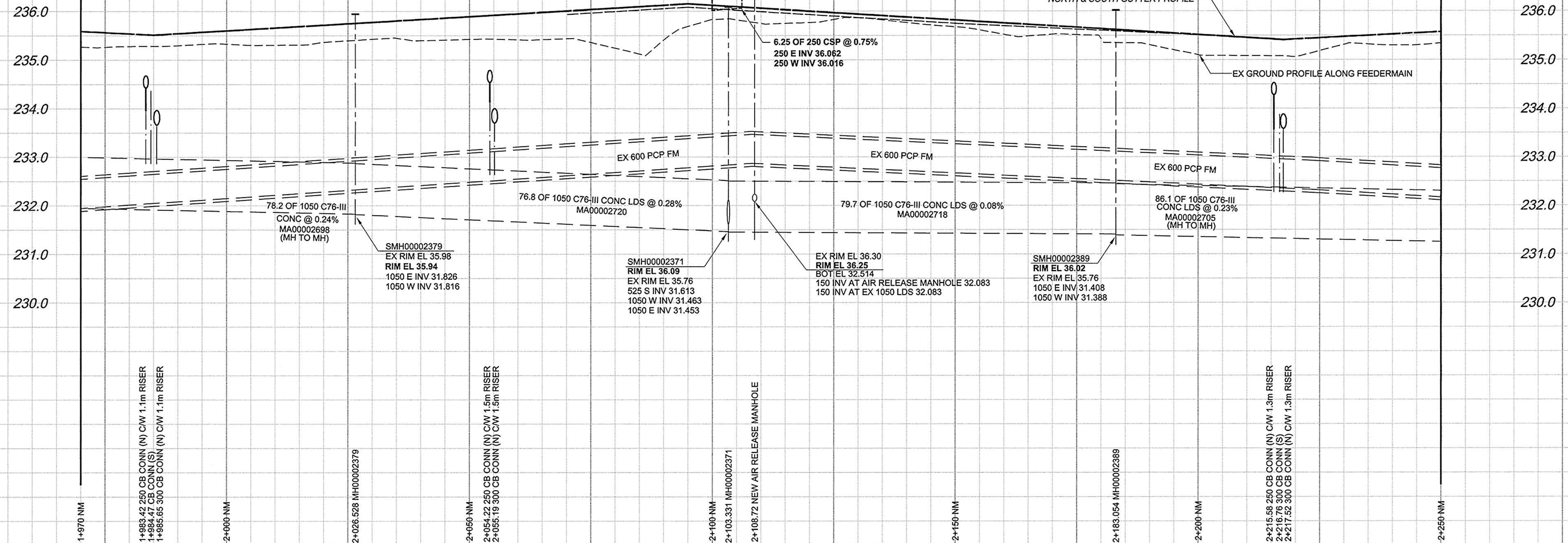


A1 SIZE 23.4" x 33.1" (594mm x 841mm)

PLOT: 4/18/2010 4:24:34 PM

AECOM REVIEW DIRFT CHK *AK*
AECOM FILE NAME: 0265-411-00_02-C-1003_RX.dwg Saved By: berardk

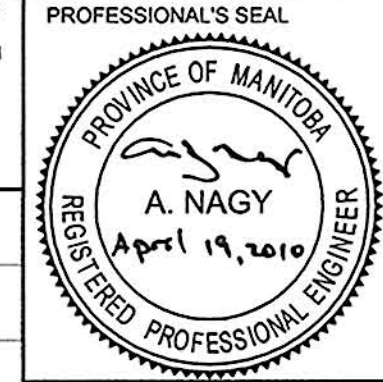


- GENERAL CONSTRUCTION NOTES:**
1. BACKFILL TO BE CLASS 2 UNLESS NOTED OTHERWISE.
 2. INSTALLATION OF ALL LDS TO BE IN A TRENCH UNLESS OTHERWISE NOTED.
 3. SEE SPECIFICATION FOR DETAILS & RESTRICTIONS WHEN WORKING AROUND EXISTING 600 FEEDERMAIN.
 4. REFER TO STRUCTURE & LOCATION SCHEDULE ON DRAWING 36 FOR FURTHER CATCHBASIN, CATCH PIT, DITCH INLET & MANHOLE DETAILS.
 5. TEMPORARILY PLUG SSP STUBS & BACKFILL AS PER THE DIRECTION OF THE CONTRACT ADMINISTRATOR.



METRIC
WHOLE NUMBERS INDICATE MILLIMETRES
DECIMALIZED NUMBERS INDICATE METRES
BID OPPORTUNITY NO. 232-2010

THE CITY OF WINNIPEG
PUBLIC WORKS DEPARTMENT
ENGINEERING DIVISION



CONSULTANT DRAWING NO.
0265-411-00_02-C-1003_RX.dwg

**INKSTER BOULEVARD
WIDENING PROJECT
BROOKSIDE BOULEVARD
TO KEEWATIN STREET**
LAND DRAINAGE SYSTEM
STA 1+970 TO STA 2+250

CITY DRAWING NUMBER
P-3301-59
SHEET 27 OF 82
DRAWING No. 1-27
REV 0

LOCATION APPROVED UNDERGROUND STRUCTURES

SUPR. U/G STRUCTURES	DATE	COMMITTEE

NOTE:
LOCATION OF UNDERGROUND STRUCTURES AS SHOWN ARE BASED ON THE BEST INFORMATION AVAILABLE. BUT NO GUARANTEE IS GIVEN THAT ALL EXISTING UTILITIES ARE SHOWN OR THAT THE GIVEN LOCATIONS ARE EXACT. CONFIRMATION OF EXISTENCE AND EXACT LOCATION OF ALL SERVICES MUST BE OBTAINED FROM THE INDIVIDUAL UTILITIES BEFORE PROCEEDING WITH CONSTRUCTION.

BM	ELEV

DESIGNED BY	DME	CHECKED BY	<i>AK</i>
DRAWN BY	KMB	APPROVED BY	<i>A. NAGY</i>
HOR. SCALE	1:500	RELEASED FOR CONSTRUCTION	<i>[Signature]</i>
VERT. SCALE	1:50	DATE	10/09/13
ISSUED FOR CONSTRUCTION	10/04/11	BY	KMB
NO. REVISIONS	YYMMDD		

150 WM	150 WM	150 WM	150 WM	150 WM	150 WM	150 WM	150 WM
	WATERMAIN		HYDRANT		VALVE		LAND DRAINAGE SEWER
	LAND DRAINAGE SEWER		WASTE WATER SEWER		MANHOLE		CATCH BASIN
	CURB INLET		CULVERT		PIPE ABANDONMENTS		SURVEY BAR
	EXISTING		NEW		LEGEND - PLAN		LEGEND - PROFILE