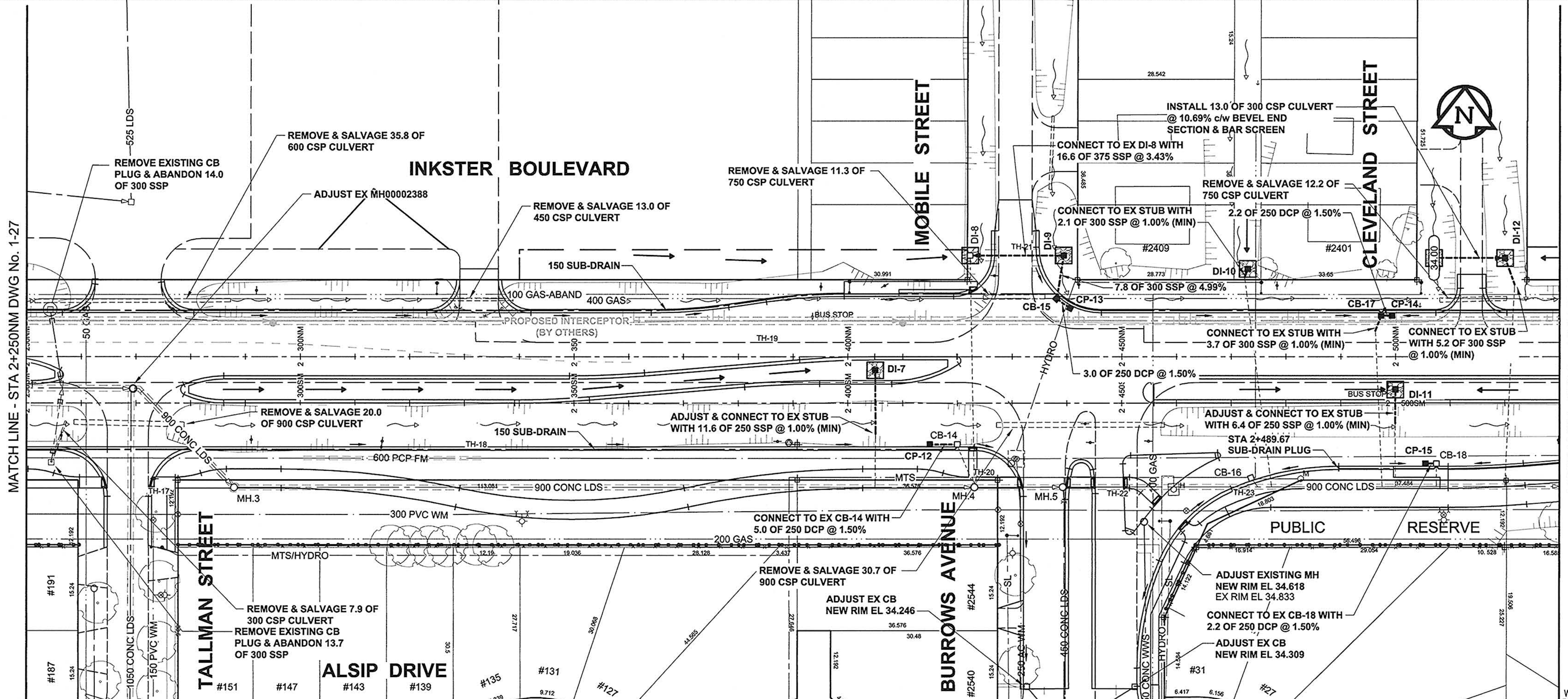
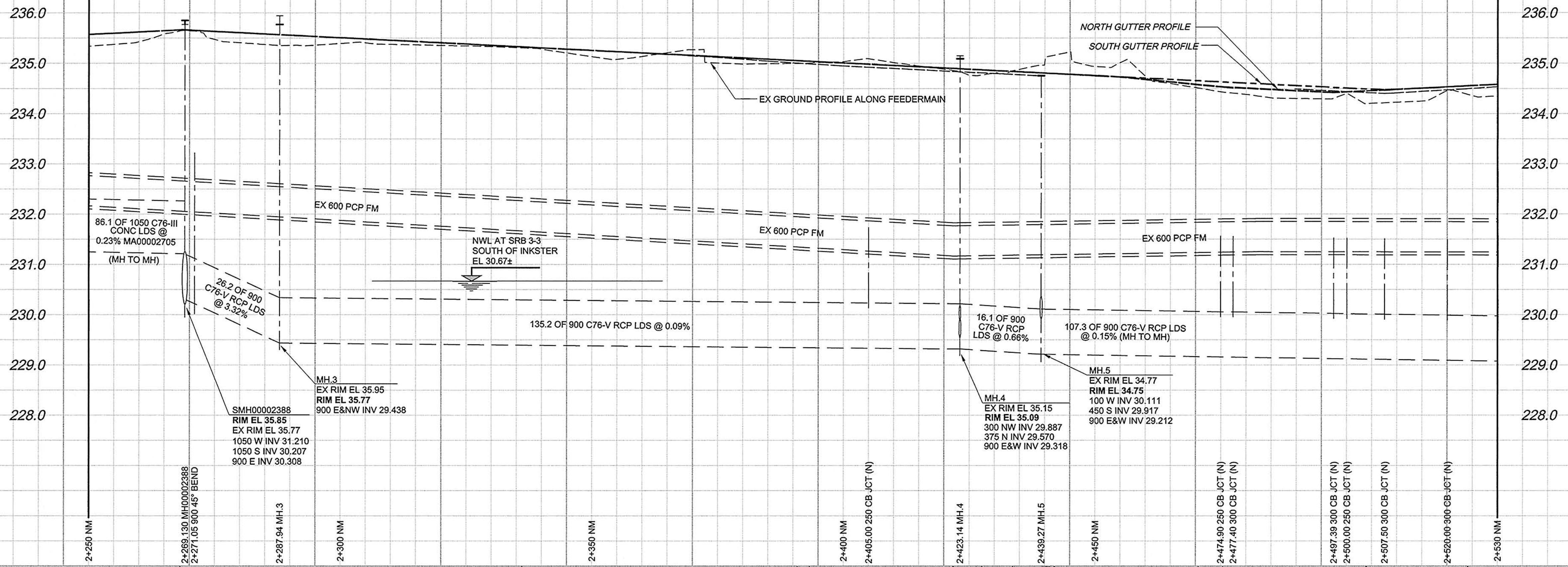


A1 SIZE 23.4" x 33.1" (594mm x 841mm)

PLOT: 4/18/2010 4:25:04 PM

AECOM FILE NAME: 0265-411-00\_02-C-1004\_RX.dwg Saved By: berardk



- GENERAL CONSTRUCTION NOTES:**
- BACKFILL TO BE CLASS 2 UNLESS NOTED OTHERWISE.
  - INSTALLATION OF ALL LDS TO BE IN A TRENCH UNLESS OTHERWISE NOTED.
  - SEE SPECIFICATION FOR DETAILS & RESTRICTIONS WHEN WORKING AROUND EXISTING 600 FEEDERMAIN.
  - REFER TO STRUCTURE & LOCATION SCHEDULE ON DRAWING 37 FOR FURTHER CATCHBASIN, CATCH PIT, DITCH INLET & MANHOLE DETAILS.
  - TEMPORARILY PLUG SSP STUBS & BACKFILL AS PER THE DIRECTION OF THE CONTRACT ADMINISTRATOR.

MATCH LINE - STA 2+250NM DWG No. 1-27

MATCH LINE - STA 2+530NM DWG No. 1-29

AECOM REVIEW DRAFT CHK (2)

150 WM	WATERMAIN	150 WM	CURB STOP
HYDRANT	REDUCER	150 WM	WATERMAIN
VALVE	COUPLING	HYDRANT	HYDRANT
300 LDS	LAND DRAINAGE SEWER	VALVE	VALVE
250 WWS	WASTE WATER SEWER	300 LDS	LAND DRAINAGE SEWER
MANHOLE	ANODE	250 WWS	WASTE WATER SEWER
CATCH BASIN	HYDRO	MANHOLE	MANHOLE
CURB INLET	MTS	CATCH BASIN	CATCH BASIN
CULVERT	GAS	CURB INLET	CURB INLET
PIPE ABANDONMENTS	TESTHOLE	CULVERT	CULVERT
SURVEY BAR	LAMP STANDARD	PIPE ABANDONMENTS	PIPE ABANDONMENTS
EXISTING	TREE	SURVEY BAR	SURVEY BAR
LEGEND - PLAN	LEGEND - PLAN	EXISTING	EXISTING

150 WM	WATERMAIN	150 WM	CURB STOP
HYDRANT	REDUCER	150 WM	WATERMAIN
VALVE	COUPLING	HYDRANT	HYDRANT
300 LDS	LAND DRAINAGE SEWER	VALVE	VALVE
250 WWS	WASTE WATER SEWER	300 LDS	LAND DRAINAGE SEWER
MANHOLE	ANODE	250 WWS	WASTE WATER SEWER
CATCH BASIN	HYDRO	MANHOLE	MANHOLE
CURB INLET	MTS	CATCH BASIN	CATCH BASIN
CULVERT	GAS	CURB INLET	CURB INLET
PIPE ABANDONMENTS	TESTHOLE	CULVERT	CULVERT
SURVEY BAR	LAMP STANDARD	PIPE ABANDONMENTS	PIPE ABANDONMENTS
EXISTING	TREE	SURVEY BAR	SURVEY BAR
LEGEND - PROFILE	LEGEND - PROFILE	EXISTING	EXISTING

150 WM	WATERMAIN	150 WM	CURB STOP
HYDRANT	REDUCER	150 WM	WATERMAIN
VALVE	COUPLING	HYDRANT	HYDRANT
300 LDS	LAND DRAINAGE SEWER	VALVE	VALVE
250 WWS	WASTE WATER SEWER	300 LDS	LAND DRAINAGE SEWER
MANHOLE	ANODE	250 WWS	WASTE WATER SEWER
CATCH BASIN	HYDRO	MANHOLE	MANHOLE
CURB INLET	MTS	CATCH BASIN	CATCH BASIN
CULVERT	GAS	CURB INLET	CURB INLET
PIPE ABANDONMENTS	TESTHOLE	CULVERT	CULVERT
SURVEY BAR	LAMP STANDARD	PIPE ABANDONMENTS	PIPE ABANDONMENTS
EXISTING	TREE	SURVEY BAR	SURVEY BAR
LEGEND - PLAN	LEGEND - PLAN	EXISTING	EXISTING

150 WM	WATERMAIN	150 WM	CURB STOP
HYDRANT	REDUCER	150 WM	WATERMAIN
VALVE	COUPLING	HYDRANT	HYDRANT
300 LDS	LAND DRAINAGE SEWER	VALVE	VALVE
250 WWS	WASTE WATER SEWER	300 LDS	LAND DRAINAGE SEWER
MANHOLE	ANODE	250 WWS	WASTE WATER SEWER
CATCH BASIN	HYDRO	MANHOLE	MANHOLE
CURB INLET	MTS	CATCH BASIN	CATCH BASIN
CULVERT	GAS	CURB INLET	CURB INLET
PIPE ABANDONMENTS	TESTHOLE	CULVERT	CULVERT
SURVEY BAR	LAMP STANDARD	PIPE ABANDONMENTS	PIPE ABANDONMENTS
EXISTING	TREE	SURVEY BAR	SURVEY BAR
LEGEND - PROFILE	LEGEND - PROFILE	EXISTING	EXISTING

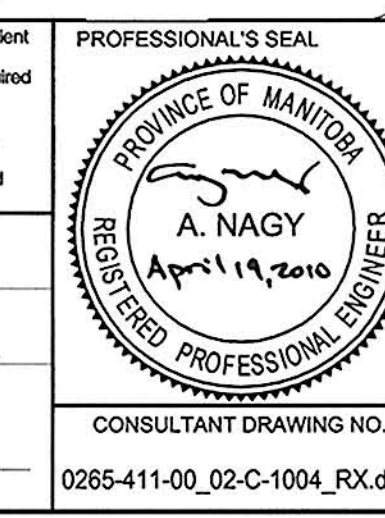
**LOCATION APPROVED UNDERGROUND STRUCTURES**

SUPR. U/G STRUCTURES DATE COMMITTEE

NOTE:  
LOCATION OF UNDERGROUND STRUCTURES AS SHOWN ARE BASED ON THE BEST INFORMATION AVAILABLE. BUT NO GUARANTEE IS GIVEN THAT ALL EXISTING UTILITIES ARE SHOWN OR THAT THE GIVEN LOCATIONS ARE EXACT. CONFIRMATION OF EXISTENCE AND EXACT LOCATION OF ALL SERVICES MUST BE OBTAINED FROM THE INDIVIDUAL UTILITIES BEFORE PROCEEDING WITH CONSTRUCTION.

BM ELEV	
0	ISSUED FOR CONSTRUCTION
NO.	REVISIONS
10/04/21	Y/M/MDD
	BY
	KMB

<b>AECOM</b>		PROFESSIONAL'S SEAL	
DESIGNED BY	DME	CHECKED BY	<i>[Signature]</i>
DRAWN BY	KMB	APPROVED BY	<i>[Signature]</i>
HOR. SCALE	1:500	RELEASED FOR CONSTRUCTION	<i>[Signature]</i>
VERT. SCALE	1:50	DATE	April 19, 2010
DATE	10/04/19	CONSULTANT DRAWING NO.	0265-411-00_02-C-1004_RX.dwg



**THE CITY OF WINNIPEG**  
PUBLIC WORKS DEPARTMENT  
ENGINEERING DIVISION

**INKSTER BOULEVARD WIDENING PROJECT**  
BROOKSIDE BOULEVARD TO KEEWATIN STREET  
LAND DRAINAGE SYSTEM  
STA 2+250 TO STA 2+530

CITY DRAWING NUMBER P-3301-60  
SHEET 28 OF 82  
DRAWING No. 1-28  
REV 0

BID OPPORTUNITY NO. 232-2010



METRIC  
WHOLE NUMBERS INDICATE MILLIMETRES  
DECIMALIZED NUMBERS INDICATE METRES