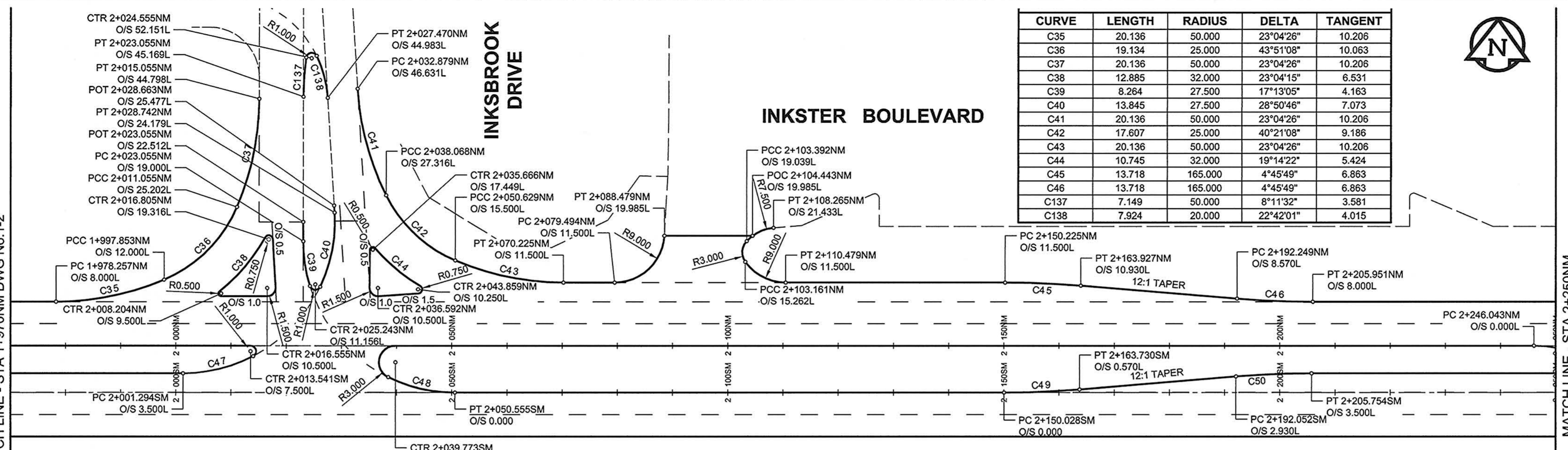
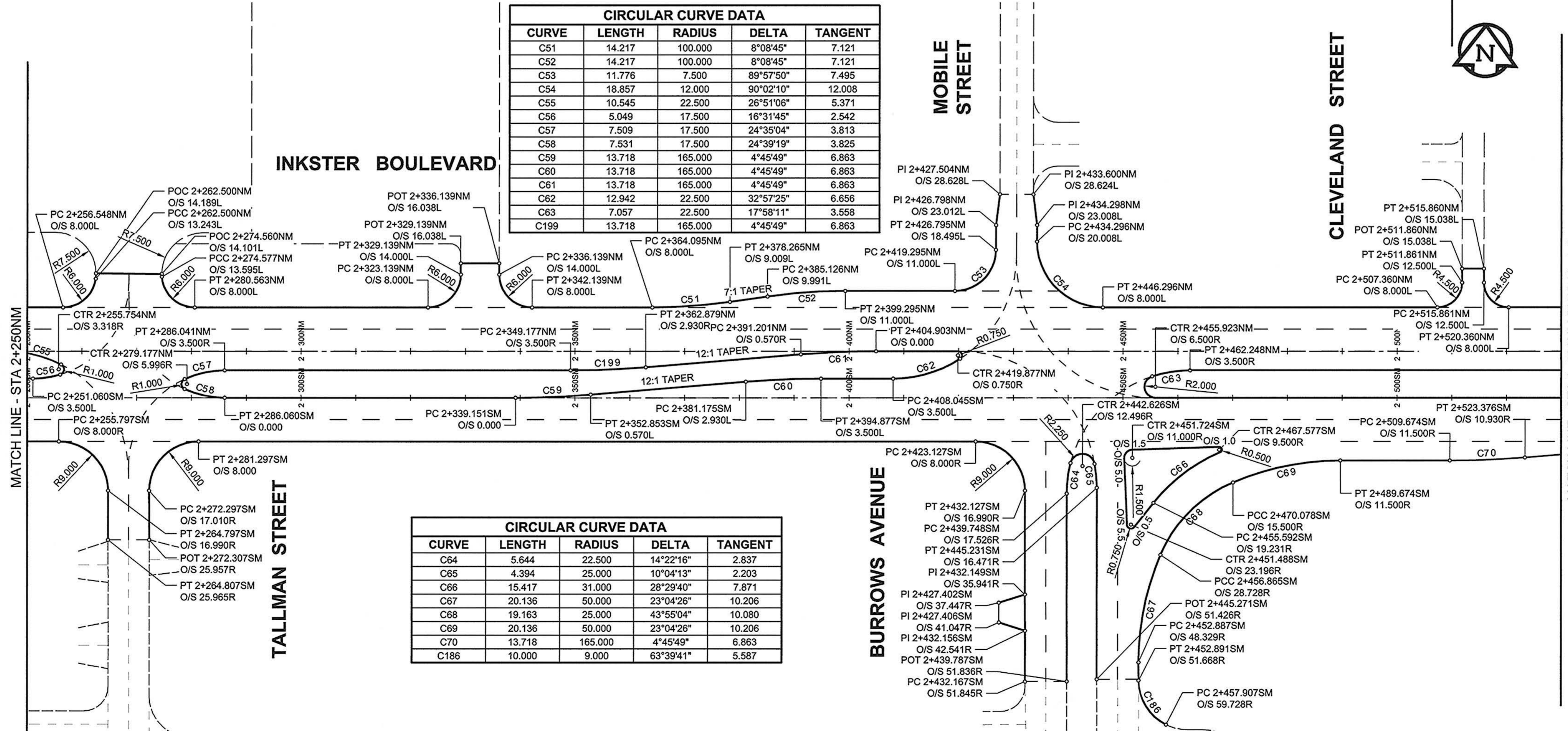


MATCH LINE - STA 1+970NM DWG No. 1-2



CURVE	LENGTH	RADIUS	DELTA	TANGENT
C35	20.136	50.000	23°04'26"	10.206
C36	19.134	25.000	43°51'08"	10.063
C37	20.136	50.000	23°04'26"	10.206
C38	12.885	32.000	23°04'15"	6.531
C39	8.264	27.500	17°13'05"	4.163
C40	13.845	27.500	28°50'46"	7.073
C41	20.136	50.000	23°04'26"	10.206
C42	17.607	25.000	40°21'09"	9.186
C43	20.136	50.000	23°04'26"	10.206
C44	10.745	32.000	19°14'22"	5.424
C45	13.718	165.000	4°45'49"	6.863
C46	13.718	165.000	4°45'49"	6.863
C137	7.149	50.000	8°11'32"	3.581
C138	7.924	20.000	22°42'01"	4.015

CIRCULAR CURVE DATA				
CURVE	LENGTH	RADIUS	DELTA	TANGENT
C47	13.212	27.500	27°31'38"	6.736
C48	12.531	27.500	26°06'32"	6.376
C49	13.718	165.000	4°45'49"	6.863
C50	13.718	165.000	4°45'49"	6.863



CIRCULAR CURVE DATA				
CURVE	LENGTH	RADIUS	DELTA	TANGENT
C51	14.217	100.000	8°08'45"	7.121
C52	14.217	100.000	8°08'45"	7.121
C53	11.776	7.500	89°57'50"	7.495
C54	18.857	12.000	90°02'10"	12.008
C55	10.545	22.500	26°51'06"	5.371
C56	5.049	17.500	16°31'45"	2.542
C57	7.509	17.500	24°35'04"	3.813
C58	7.531	17.500	24°39'19"	3.825
C59	13.718	165.000	4°45'49"	6.863
C60	13.718	165.000	4°45'49"	6.863
C61	13.718	165.000	4°45'49"	6.863
C62	12.942	22.500	32°57'25"	6.656
C63	7.057	22.500	17°58'11"	3.558
C199	13.718	165.000	4°45'49"	6.863

CIRCULAR CURVE DATA				
CURVE	LENGTH	RADIUS	DELTA	TANGENT
C64	5.644	22.500	14°22'16"	2.837
C65	4.394	25.000	10°04'13"	2.203
C66	15.417	31.000	28°29'40"	7.871
C67	20.136	50.000	23°04'26"	10.206
C68	19.163	25.000	43°55'04"	10.080
C69	20.136	50.000	23°04'26"	10.206
C70	13.718	165.000	4°45'49"	6.863
C186	10.000	9.000	63°39'41"	5.587

Scale: 0 5 10 15 m H=1:500

AECOM of Authorization
AECOM Canada Ltd.
No. 4671 Date: April 19, 2010

BID OPPORTUNITY NO. 232-2010

LOCATION APPROVED UNDERGROUND STRUCTURES SUPR. U/G STRUCTURES COMMITTEE DATE NOTE: LOCATION OF UNDERGROUND STRUCTURES AS SHOWN ARE BASED ON THE BEST INFORMATION AVAILABLE. BUT NO GUARANTEE IS GIVEN THAT ALL EXISTING UTILITIES ARE SHOWN OR THAT THE GIVEN LOCATIONS ARE EXACT. CONFIRMATION OF EXISTENCE AND EXACT LOCATION OF ALL SERVICES MUST BE OBTAINED FROM THE INDIVIDUAL UTILITIES BEFORE PROCEEDING WITH CONSTRUCTION.	BM - ELEV -	AECOM DESIGNED BY: WRJ DRAWN BY: DID HOR. SCALE: 1:500 VERT. SCALE: N/A DATE: 10/04/21	CHECKED BY: RPB APPROVED BY: TGS RELEASED FOR CONSTRUCTION: [Signature] DATE: April 19, 2010
--	----------------	--	---

This drawing has been prepared for the use of AECOM's client and may not be used, reproduced or relied upon by third parties, except as agreed by AECOM and its client, as required by law or for use by governmental reviewing agencies. AECOM accepts no responsibility, and denies any liability whatsoever, to any party that modifies this drawing without AECOM's express written consent. Do not scale this document. All measurements must be obtained from stated dimensions.	PROFESSIONAL SEAL PROVINCE OF MANITOBA REGISTERED PROFESSIONAL ENGINEER R. P. BRUCE CONSULTANT DRAWING NO. 0265-411-00_04-CT1003_RX.dwg
--	--

THE CITY OF WINNIPEG
PUBLIC WORKS DEPARTMENT
ENGINEERING DIVISION

INKSTER BOULEVARD WIDENING PROJECT
BROOKSIDE BOULEVARD TO KEEWATIN STREET
HORIZONTAL GEOMETRY
STA 1+970NM TO STA 2+530NM

CITY DRAWING NUMBER: P-3301-35	SHEET 3 OF 82
DRAWING No. 1-3	REV 0