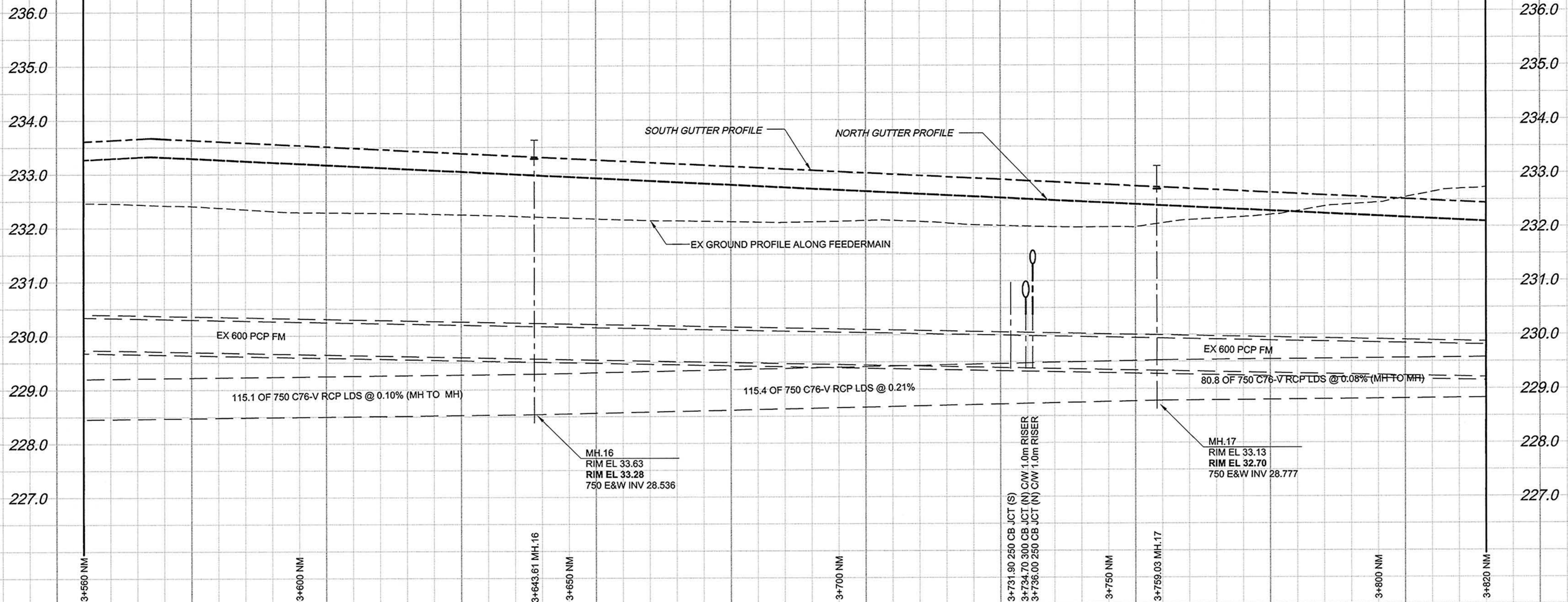


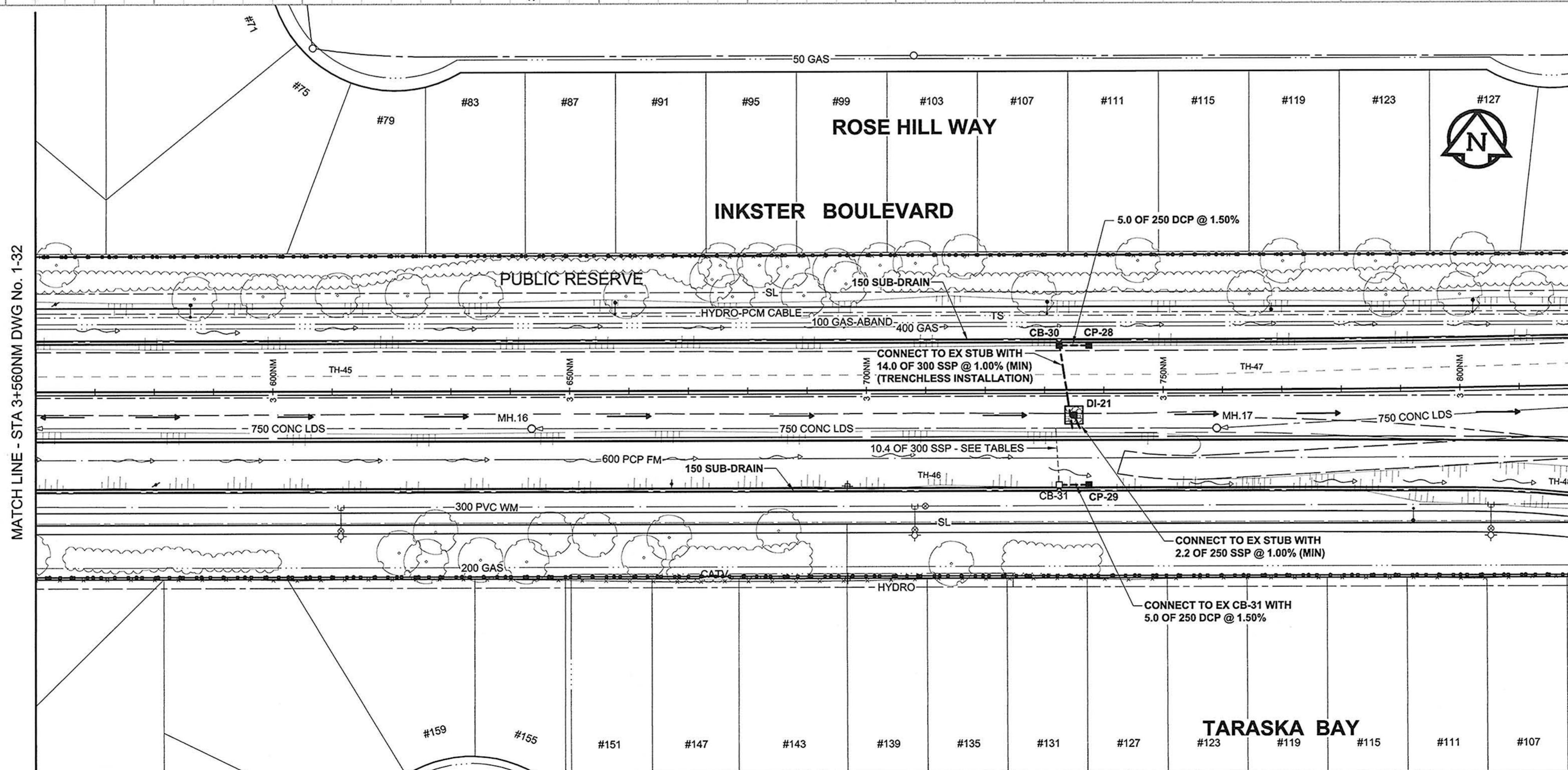
A1 SIZE 23.4" x 33.1" (594mm x 841mm)

PLOT: 4/16/2010 4:27:26 PM

AECOM REVIEW DRAFT CHK
 AECOM FILE NAME: 0265-411-00_02-C-1009_RX.dwg Saved By: berandk



CHAINAGE ALONG NORTH MEDIAN CONTROL LINE



GENERAL CONSTRUCTION NOTES:

- BACKFILL TO BE CLASS 2 UNLESS NOTED OTHERWISE.
- INSTALLATION OF ALL LDS TO BE IN A TRENCH UNLESS OTHERWISE NOTED.
- SEE SPECIFICATION FOR DETAILS & RESTRICTIONS WHEN WORKING AROUND EXISTING 600 FEEDERMAIN.
- REFER TO STRUCTURE & LOCATION SCHEDULE ON DRAWING 39 FOR FURTHER CATCHBASIN, DITCH PIT, DITCH INLET & MANHOLE DETAILS.
- TEMPORARILY PLUG SSP STUBS & BACKFILL AS PER THE DIRECTION OF THE CONTRACT ADMINISTRATOR.

MATCH LINE - STA 3+560NM DWG No. 1-32

MATCH LINE - STA 3+820NM DWG No. 1-34



METRIC
 WHOLE NUMBERS INDICATE MILLIMETRES
 DECIMALIZED NUMBERS INDICATE METRES
THE CITY OF WINNIPEG
PUBLIC WORKS DEPARTMENT
ENGINEERING DIVISION
 INKSTER BOULEVARD
 WIDENING PROJECT
 BROOKSIDE BOULEVARD
 TO KEEWATIN STREET
 LAND DRAINAGE SYSTEM
 STA 3+560 TO STA 3+820

CITY DRAWING NUMBER	P-3301-65
SHEET	33 OF 82
DRAWING No.	1-33
REV	0

150 WM	WATERMAIN	150 WM	150 WM	150 WM	WATERMAIN	150 WM	150 WM
HYDRANT	HYDRANT	REDUCER	REDUCER	HYDRANT	HYDRANT	REDUCER	REDUCER
VALVE	VALVE	COUPLING	COUPLING	VALVE	VALVE	COUPLING	COUPLING
300 LDS	LAND DRAINAGE SEWER	ANODE	ANODE	300 LDS	LAND DRAINAGE SEWER	ANODE	ANODE
250 WWS	WASTE WATER SEWER	HYDRO	HYDRO	250 WWS	WASTE WATER SEWER	HYDRO	HYDRO
MANHOLE	MANHOLE	MTS	MTS	MANHOLE	MANHOLE	MTS	MTS
CATCH BASIN	CATCH BASIN	GAS	GAS	CATCH BASIN	CATCH BASIN	GAS	GAS
CURB INLET	CURB INLET	TESTHOLE	TESTHOLE	CURB INLET	CURB INLET	TESTHOLE	TESTHOLE
CULVERT	CULVERT	LAMP STANDARD	LAMP STANDARD	CULVERT	CULVERT	LAMP STANDARD	LAMP STANDARD
PIPE ABANDONMENTS	PIPE ABANDONMENTS	TREE	TREE	PIPE ABANDONMENTS	PIPE ABANDONMENTS	TREE	TREE
SURVEY BAR	SURVEY BAR			SURVEY BAR	SURVEY BAR		
EXISTING	LEGEND - PLAN	NEW	EXISTING	EXISTING	LEGEND - PROFILE	NEW	EXISTING

LOCATION APPROVED UNDERGROUND STRUCTURES			
SUPR. U/G STRUCTURES	DATE	COMMITTEE	
NOTE:	LOCATION OF UNDERGROUND STRUCTURES AS SHOWN ARE BASED ON THE BEST INFORMATION AVAILABLE. BUT NO GUARANTEE IS GIVEN THAT ALL EXISTING UTILITIES ARE SHOWN OR THAT THE GIVEN LOCATIONS ARE EXACT. CONFIRMATION OF EXISTENCE AND EXACT LOCATION OF ALL SERVICES MUST BE OBTAINED FROM THE INDIVIDUAL UTILITIES BEFORE PROCEEDING WITH CONSTRUCTION.		
BM ELEV			
0	ISSUED FOR CONSTRUCTION	10/04/21	KMB
NO.	REVISIONS	YYMMDD	BY

This drawing has been prepared for the use of AECOM's client and may not be used, reproduced or relied upon by third parties, except as agreed by AECOM and its client, as required by law or for use by governmental reviewing agencies. AECOM accepts no responsibility, and denies any liability whatsoever, to any party that modifies this drawing without AECOM's express written consent. Do not scale this document. All measurements must be obtained from stated dimensions.			
AECOM	DESIGNED BY	DME	CHECKED BY
	DRAWN BY	KMB	APPROVED BY
	HOR. SCALE	1:500	RELEASED FOR CONSTRUCTION
	VERT. SCALE	1:50	DATE
	DATE	10/04/19	DATE

PROFESSIONAL'S SEAL
 PROVINCE OF MANITOBA
 A. NAGY
 April 19, 2010
 CONSULTANT DRAWING NO.
 0265-411-00_02-C-1009_RX.dwg