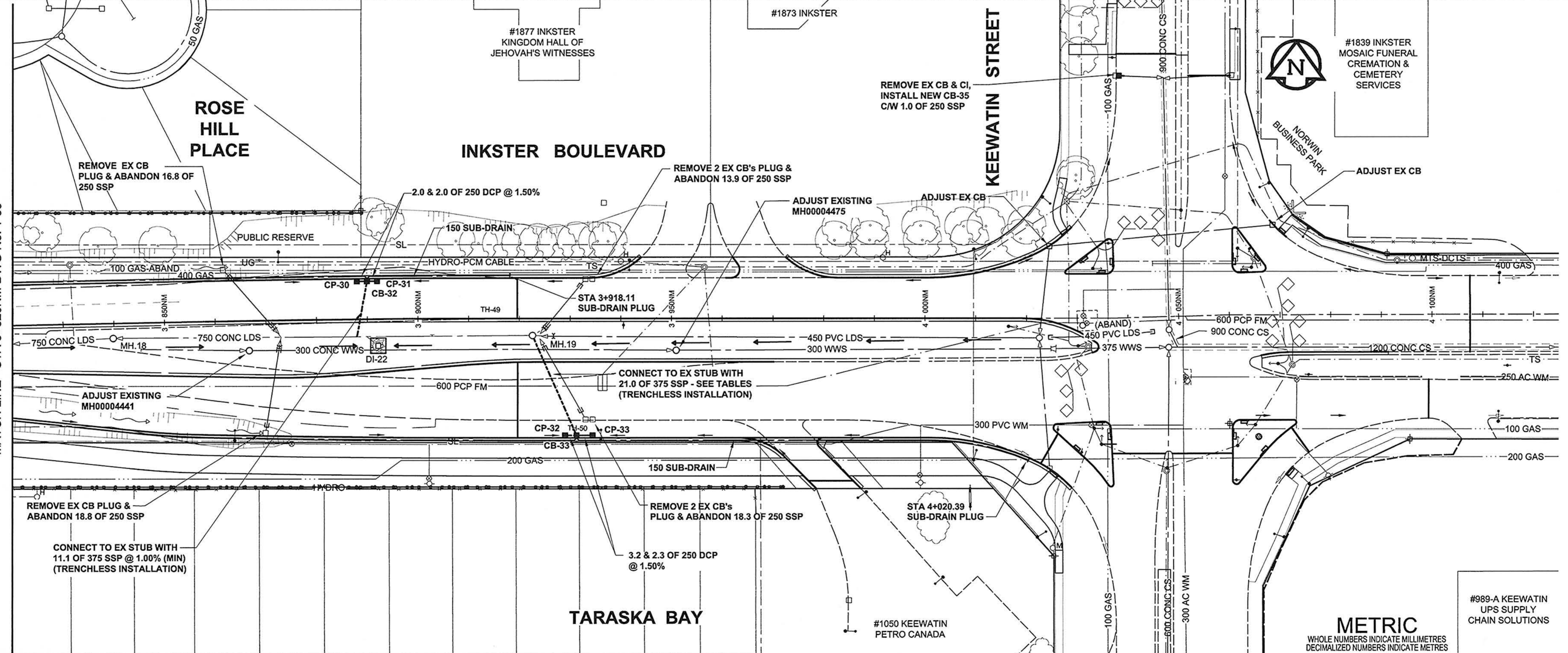


- GENERAL CONSTRUCTION NOTES:**
- BACKFILL TO BE CLASS 2 UNLESS NOTED OTHERWISE.
  - INSTALLATION OF ALL LDS TO BE IN A TRENCH UNLESS OTHERWISE NOTED.
  - SEE SPECIFICATION FOR DETAILS & RESTRICTIONS WHEN WORKING AROUND EXISTING 600 FEEDERMAIN.
  - REFER TO STRUCTURE & LOCATION SCHEDULE ON DRAWING 39 FOR FURTHER CATCHBASIN, CATCH PIT, DITCH INLET & MANHOLE DETAILS.
  - TEMPORARILY PLUG SSP STUBS & BACKFILL AS PER THE DIRECTION OF THE CONTRACT ADMINISTRATOR.



AECOM REVIEW DRFT CHK

AECOM FILE NAME: 0265-411-00\_02-C-1010\_RX.dwg Saved By: berardk

150 WM	WATERMAIN	150 WM	CURB STOP	150 WM	WATERMAIN	150 WM
	HYDRANT		REDUCER		VALVE	
	VALVE		COUPLING		VALVE	
	LAND DRAINAGE SEWER		ANODE		LAND DRAINAGE SEWER	
	WASTE WATER SEWER		HYDRO		WASTE WATER SEWER	
	MANHOLE		MTS		PAVEMENT CROWN	
	CATCH BASIN		GAS		N/W PROPERTY LINE	
	CURB INLET		TESTHOLE		S/E PROPERTY LINE	
	CULVERT		LAMP STANDARD		N/W GUTTER	
	PIPE ABANDONMENTS		TREE		S/E GUTTER	
	SURVEY BAR					
	EXISTING		NEW		EXISTING	
	LEGEND - PLAN		LEGEND - PLAN		LEGEND - PROFILE	

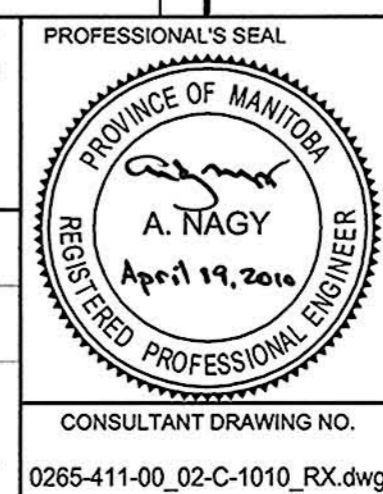
**LOCATION APPROVED UNDERGROUND STRUCTURES**

SUPR. U/G STRUCTURES	DATE COMMITTEE

**NOTE:**  
LOCATION OF UNDERGROUND STRUCTURES AS SHOWN ARE BASED ON THE BEST INFORMATION AVAILABLE. BUT NO GUARANTEE IS GIVEN THAT ALL EXISTING UTILITIES ARE SHOWN OR THAT THE GIVEN LOCATIONS ARE EXACT. CONFIRMATION OF EXISTENCE AND EXACT LOCATION OF ALL SERVICES MUST BE OBTAINED FROM THE INDIVIDUAL UTILITIES BEFORE PROCEEDING WITH CONSTRUCTION.

**AECOM**

DESIGNED BY	DME	CHECKED BY	
DRAWN BY	KMB	APPROVED BY	
HOR. SCALE	1:500	RELEASED FOR CONSTRUCTION	
VERT. SCALE	1:50	DATE	April 19, 2010
DATE	10/04/19		



**THE CITY OF WINNIPEG**  
PUBLIC WORKS DEPARTMENT  
ENGINEERING DIVISION

**INKSTER BOULEVARD WIDENING PROJECT**  
BROOKSIDE BOULEVARD TO KEEWATIN STREET  
LAND DRAINAGE SYSTEM  
STA 3+820 TO KEEWATIN STREET

CITY DRAWING NUMBER P-3301-66  
SHEET 34 OF 82  
DRAWING No. 1-34  
REV 0

#989-A KEEWATIN UPS SUPPLY CHAIN SOLUTIONS  
METRIC  
WHOLE NUMBERS INDICATE MILLIMETRES  
DECIMALIZED NUMBERS INDICATE METRES

#1877 INKSTER KINGDOM HALL OF JEHOVAH'S WITNESSES  
#1839 INKSTER MOSAIC FUNERAL CREMATION & CEMETERY SERVICES  
#1050 KEEWATIN PETRO CANADA

BID OPPORTUNITY NO. 232-2010