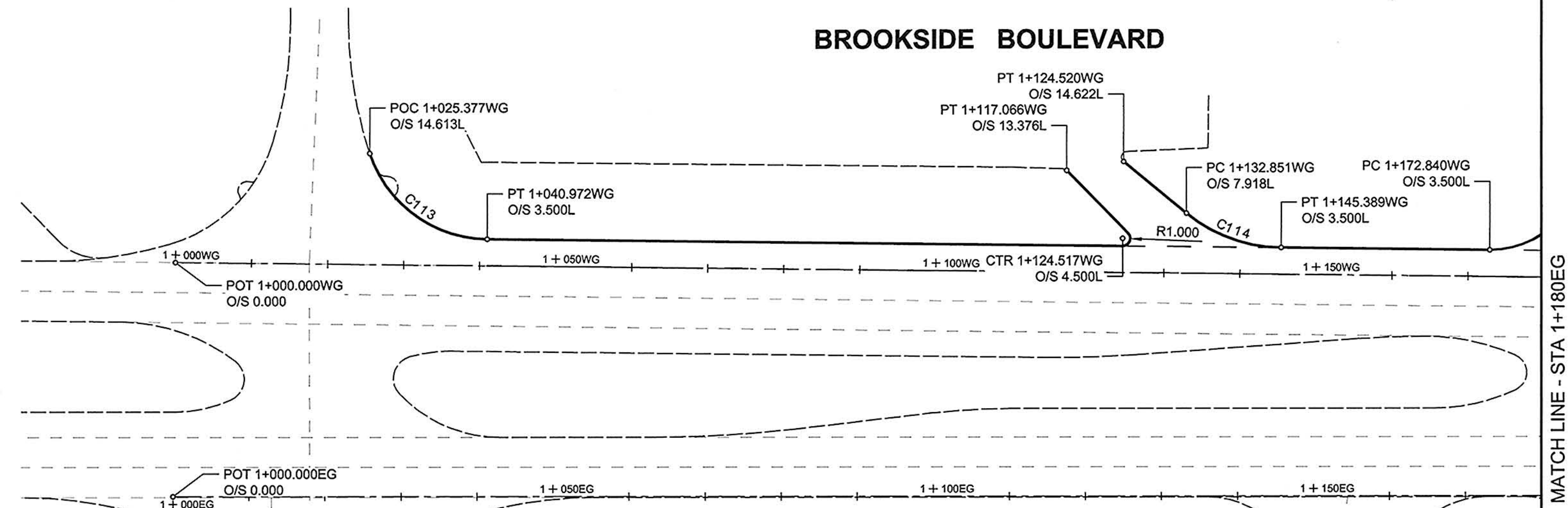


BROOKSIDE BOULEVARD WEST GUTTER CONTROL POINT COORDINATES		
POINT/STATION	NORTHING	EASTING
POT 1+000.000WG	9563.829	9178.534

BROOKSIDE BOULEVARD

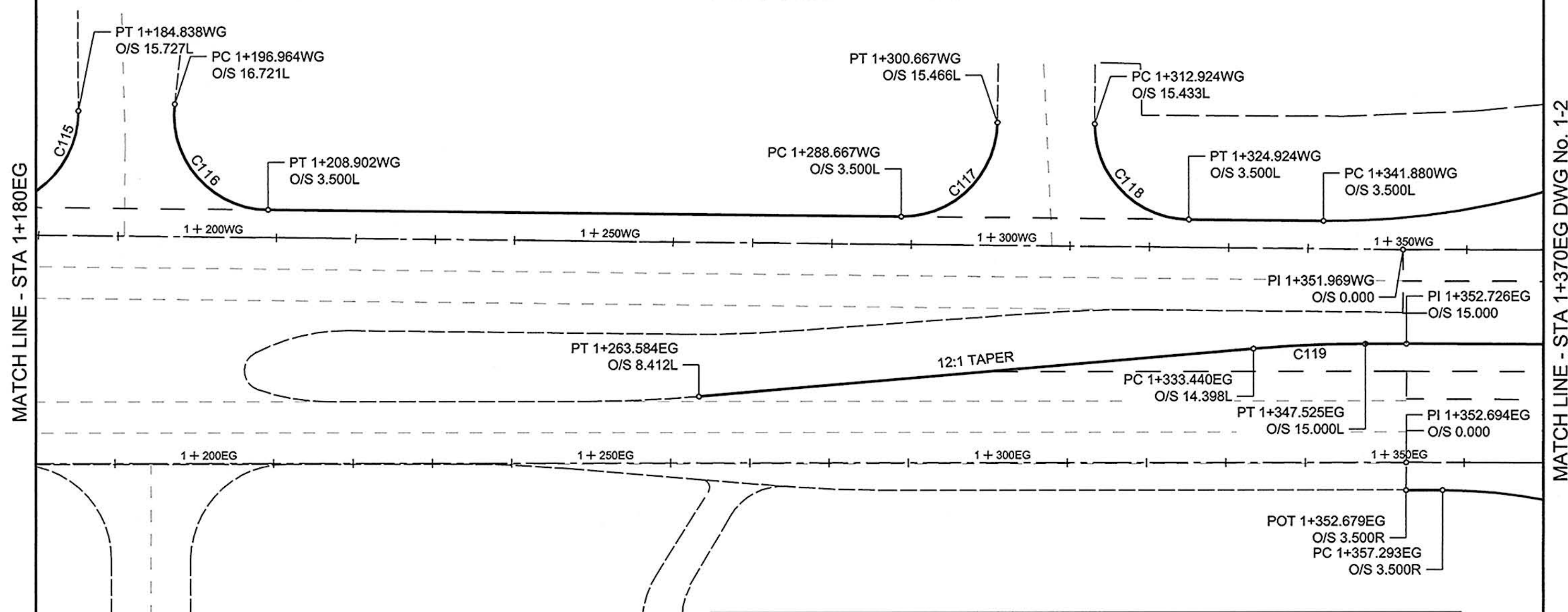


BROOKSIDE BOULEVARD EAST GUTTER CONTROL POINT COORDINATES		
POINT/STATION	NORTHING	EASTING
POT 1+000.000EG	9564.175	9209.401

CIRCULAR CURVE DATA				
CURVE	LENGTH	RADIUS	DELTA	TANGENT
C113	20.430	16.500	70°56'33"	11.757
C114	13.552	20.000	38°49'25"	7.048

BROOKSIDE BOULEVARD WEST GUTTER CONTROL POINT COORDINATES		
POINT/STATION	NORTHING	EASTING
PI 1+351.969WG	9915.775	9174.588

BROOKSIDE BOULEVARD



BROOKSIDE BOULEVARD EAST GUTTER CONTROL POINT COORDINATES		
POINT/STATION	NORTHING	EASTING
PI 1+352.694EG	9916.779	9201.434

CIRCULAR CURVE DATA				
CURVE	LENGTH	RADIUS	DELTA	TANGENT
C115	19.076	12.000	91°05'00"	12.229
C116	20.072	12.000	95°50'14"	13.289
C117	18.815	12.000	89°50'08"	11.966
C118	16.782	12.000	89°40'40"	11.933
C119	14.103	165.000	4°53'50"	7.056

METRIC
WHOLE NUMBERS INDICATE MILLIMETRES
DECIMALIZED NUMBERS INDICATE METRES

LOCATION APPROVED UNDERGROUND STRUCTURES

NOTE:
LOCATION OF UNDERGROUND STRUCTURES AS SHOWN ARE BASED ON THE BEST INFORMATION AVAILABLE. BUT NO GUARANTEE IS GIVEN THAT ALL EXISTING UTILITIES ARE SHOWN OR THAT THE GIVEN LOCATIONS ARE EXACT. CONFIRMATION OF EXISTENCE AND EXACT LOCATION OF ALL SERVICES MUST BE OBTAINED FROM THE INDIVIDUAL UTILITIES BEFORE PROCEEDING WITH CONSTRUCTION.

BM -			
ELEV -			
NO.	REVISIONS	YYMMDD	BY

AECOM		DESIGNED BY: WRJ		CHECKED BY: RPB	
DRAWN BY: DID		APPROVED BY: TGS		RELEASED FOR CONSTRUCTION	
HOR. SCALE: 1:500		VERT. SCALE: N/A		DATE: April 19, 2010	

PROFESSIONAL'S SEAL
PROVINCE OF MANITOBA
REGISTERED PROFESSIONAL ENGINEER
R.P. BRUCE

THE CITY OF WINNIPEG
PUBLIC WORKS DEPARTMENT
ENGINEERING DIVISION

INKSTER BOULEVARD WIDENING PROJECT
BROOKSIDE BOULEVARD TO KEEWATIN STREET
HORIZONTAL GEOMETRY

CITY DRAWING NUMBER: P-3301-39
SHEET 7 OF 82
DRAWING No. 1-7 REV 0

AECM
Certificate of Authorization
AECOM Canada Ltd.
No. 4671 Date: April 19/10

BID OPPORTUNITY NO. 232-2010

