

A1 SIZE 23.4" x 33.1" (594mm x 841mm)

PLOT: 10/04/16 4:17:03 PM

AECOM FILE NAME: 0265-411-00_04-CT1039_RX.dwg Saved By: dsspsd

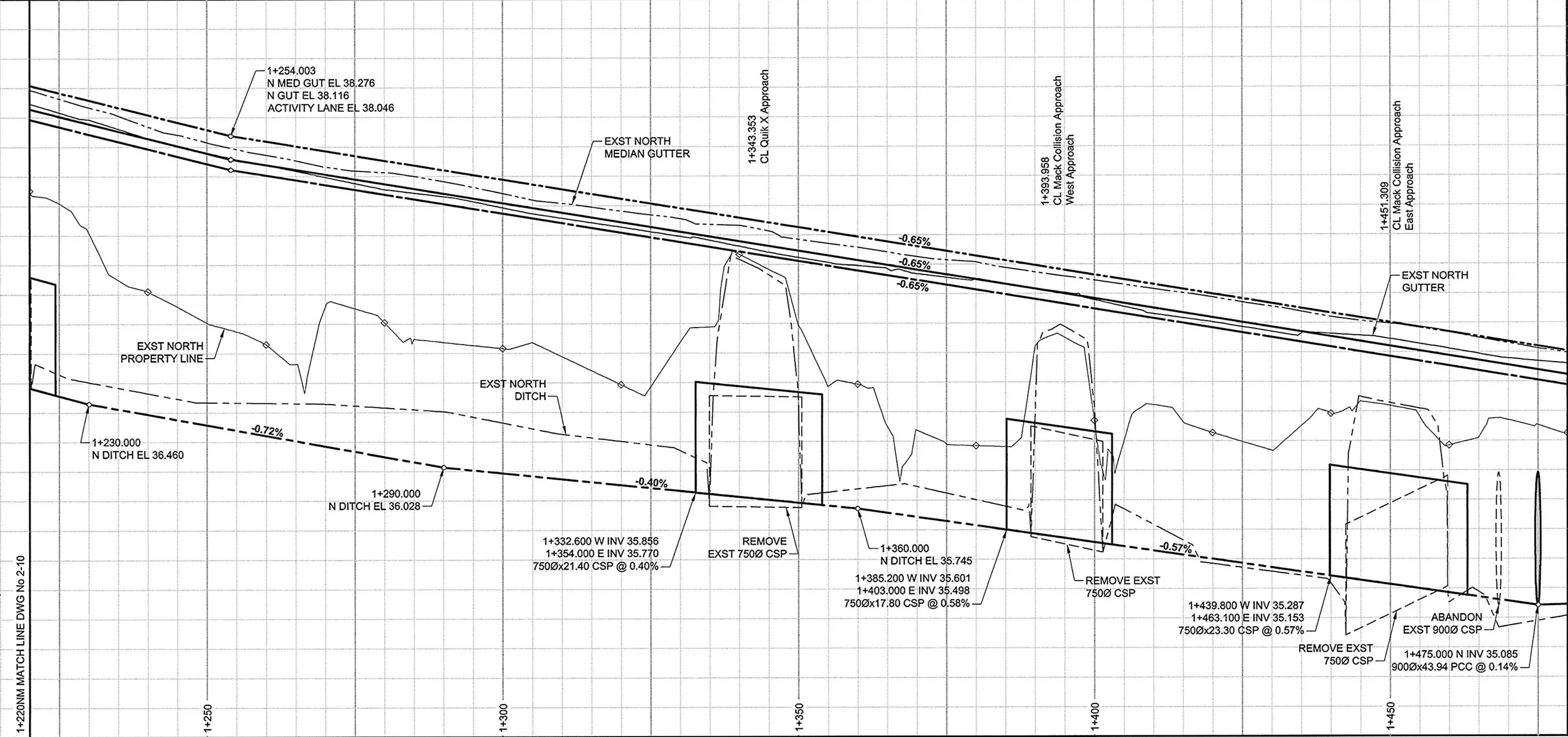
238.400
237.600
236.800
236.000
235.200

238.400
237.600
236.800
236.000
235.200

PAVEMENT PROFILE

PR No. 221
WESTBOUND LANES

CHAINAGE ALONG NORTH MEDIAN CONTROL LINE



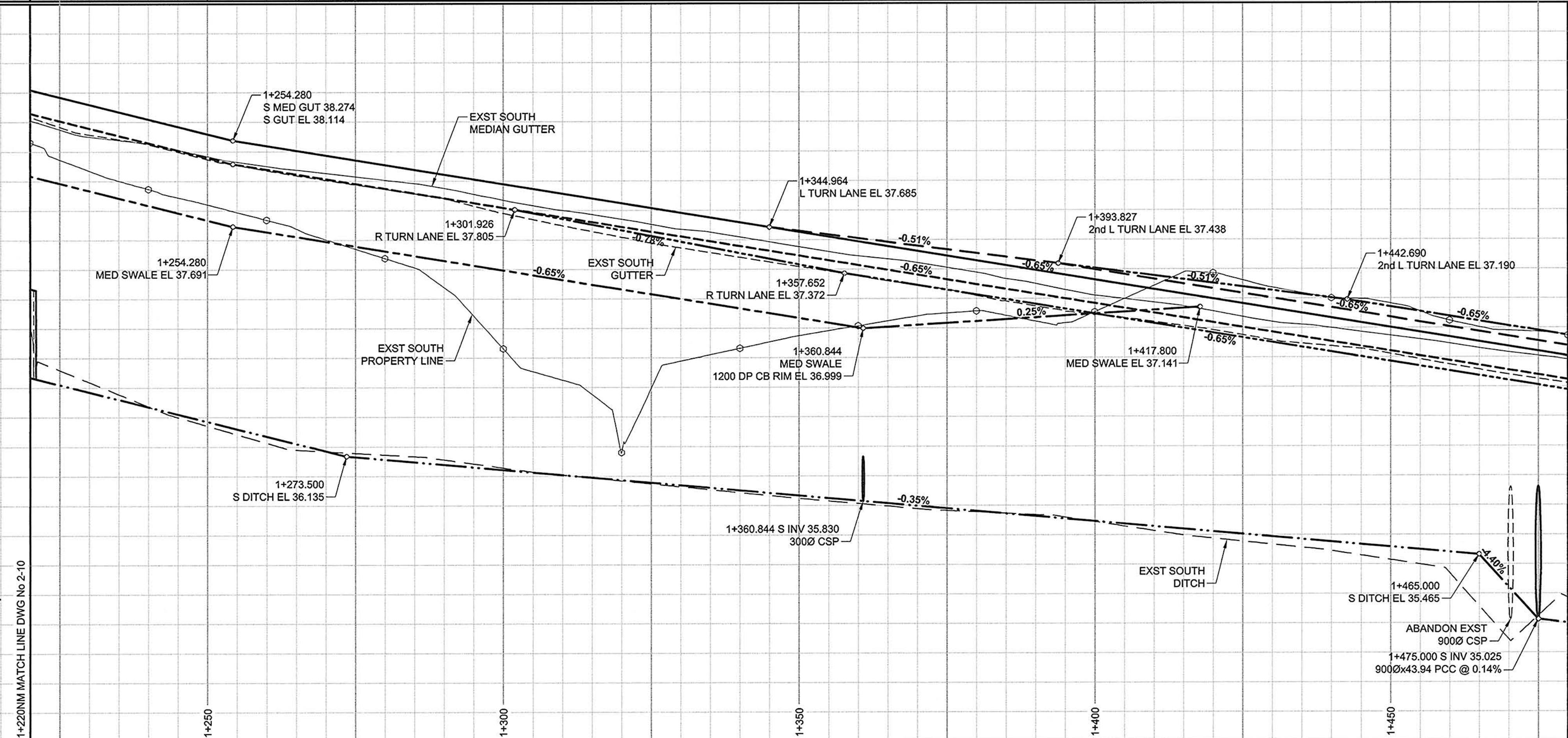
238.400
237.600
236.800
236.000
235.200

238.400
237.600
236.800
236.000
235.200

PAVEMENT PROFILE

PR No. 221
EASTBOUND LANES

CHAINAGE ALONG SOUTH MEDIAN CONTROL LINE



LOCATION APPROVED UNDERGROUND STRUCTURES

NOTE: LOCATION OF UNDERGROUND STRUCTURES AS SHOWN ARE BASED ON THE BEST INFORMATION AVAILABLE. BUT NO GUARANTEE IS GIVEN THAT ALL EXISTING UTILITIES ARE SHOWN OR THAT THE GIVEN LOCATIONS ARE EXACT. CONFIRMATION OF EXISTENCE AND EXACT LOCATION OF ALL SERVICES MUST BE OBTAINED FROM THE INDIVIDUAL UTILITIES BEFORE PROCEEDING WITH CONSTRUCTION.

Table with columns for NO., REVISIONS, DATE, and BY. Includes entry for 'ISSUED FOR CONSTRUCTION' on 10/04/21.

Table with columns for DESIGNED BY, DRAWN BY, HOR. SCALE, VERT. SCALE, CHECKED BY, APPROVED BY, and DATE. Includes AECOM logo and design details.

PROFESSIONAL'S SEAL for R. P. BRUCE, CONSULTANT DRAWING NO. 0265-411-00_04-CT1039_RX.dwg

THE CITY OF WINNIPEG PUBLIC WORKS DEPARTMENT ENGINEERING DIVISION. INKSTER BOULEVARD WIDENING PROJECT 430m WEST OF OAK POINT HIGHWAY TO BROOKSIDE BOULEVARD. VERTICAL ALIGNMENT STA 1+220 TO STA 1+480.

AECOM Certificate of Authorization, AECOM Canada Ltd., No. 4671, Date: April 19/10, BID OPPORTUNITY NO. 232-2010

METRIC WHOLE NUMBERS INDICATE MILLIMETRES DECIMALIZED NUMBERS INDICATE METRES

Table with columns for CITY DRAWING NUMBER (P-3301-102), SHEET (70 OF 82), DRAWING No. (2-11), and REV (0).