

A1 SIZE 23.4" x 33.1" (594mm x 841mm)

241.600

241.600

240.800

240.800

240.000

240.000

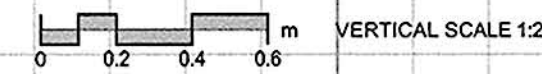
239.200

239.200

238.400

238.400

PAVEMENT PROFILE- (TO BE DETERMINED)



CHAINAGE ALONG CENTERLINE

0+100

0+150

0+200

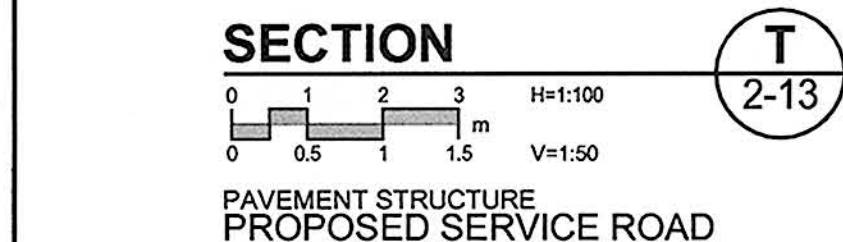
0+250

0+300

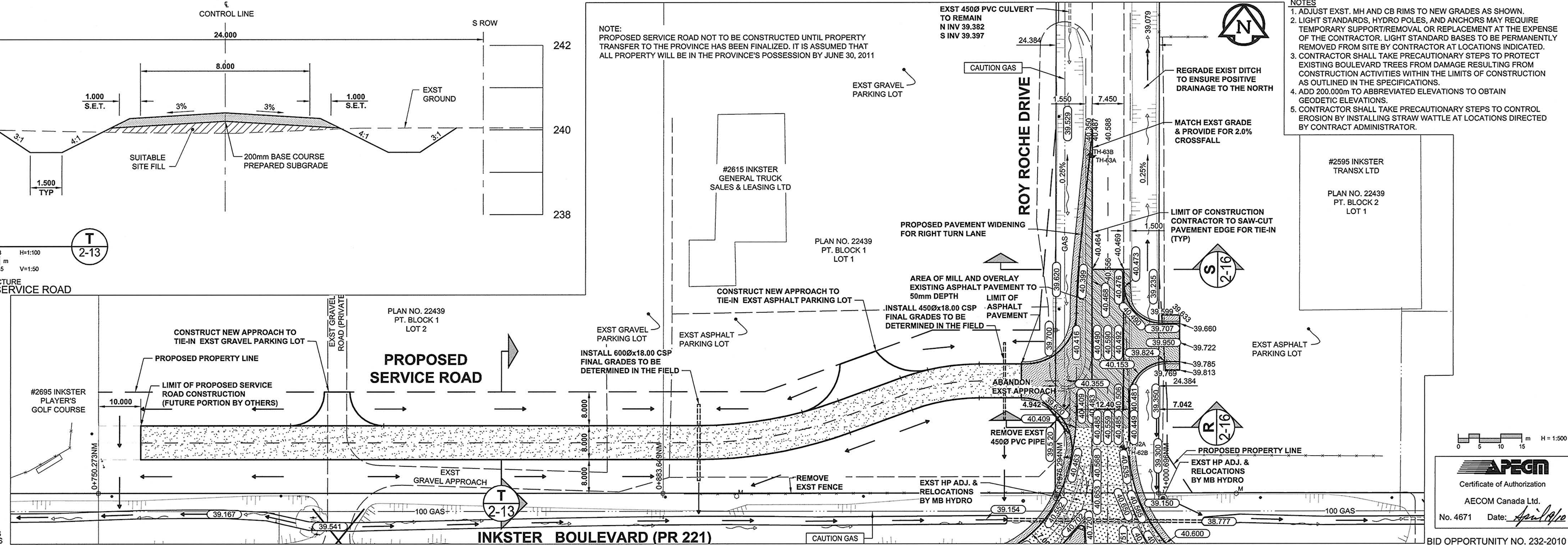
0+350

PLOT: 10/04/16 4:18:10 PM

AECOM FILE NAME: 0265-411-00_04-CT1034_RX.dwg Saved By: dsszpc00d



NOTE:
PROPOSED SERVICE ROAD NOT TO BE CONSTRUCTED UNTIL PROPERTY TRANSFER TO THE PROVINCE HAS BEEN FINALIZED. IT IS ASSUMED THAT ALL PROPERTY WILL BE IN THE PROVINCE'S POSSESSION BY JUNE 30, 2011



- NOTES
- ADJUST EXIST. MH AND CB RIMS TO NEW GRADES AS SHOWN.
 - LIGHT STANDARDS, HYDRO POLES, AND ANCHORS MAY REQUIRE TEMPORARY SUPPORT/REMOVAL OR REPLACEMENT AT THE EXPENSE OF THE CONTRACTOR. LIGHT STANDARD BASES TO BE PERMANENTLY REMOVED FROM SITE BY CONTRACTOR AT LOCATIONS INDICATED.
 - CONTRACTOR SHALL TAKE PRECAUTIONARY STEPS TO PROTECT EXISTING BOULEVARD TREES FROM DAMAGE RESULTING FROM CONSTRUCTION ACTIVITIES WITHIN THE LIMITS OF CONSTRUCTION AS OUTLINED IN THE SPECIFICATIONS.
 - ADD 200.000m TO ABBREVIATED ELEVATIONS TO OBTAIN GEODETIC ELEVATIONS.
 - CONTRACTOR SHALL TAKE PRECAUTIONARY STEPS TO CONTROL EROSION BY INSTALLING STRAW WATTLE AT LOCATIONS DIRECTED BY CONTRACT ADMINISTRATOR.

METRIC
WHOLE NUMBERS INDICATE MILLIMETRES
DECIMALIZED NUMBERS INDICATE METRES

	GAS		MANHOLE		CONCRETE PAVEMENT
	MTS		CATCH BASIN / CATCH PIT		ASPHALT PAVEMENT
	HYDRO		CURB INLET WITH BOX		CONC. SIDEWALK/MEDIAN
	CATWFO		TREE		PAVING STONE
	TRAFFIC SIGNALS/PIT		TEST HOLE		GRAVEL
	LAND DRAINAGE SEWER		PROPERTY LINE		RAMP CURB
	SANITARY/COMBINED SEWER		SURVEY BAR		PLANING/REMOVAL
	SSP/DCP		FENCE		
	WATERMAIN		BOC/EOPAVT		
	SUBDRAIN		ELEVATION (33.100)		
	DITCH		TRAFFIC SIGN		
	EXISTING		LEGEND - PLAN		NEW

LOCATION APPROVED UNDERGROUND STRUCTURES

DATE COMMITTEE

NOTE:
LOCATION OF UNDERGROUND STRUCTURES AS SHOWN ARE BASED ON THE BEST INFORMATION AVAILABLE. BUT NO GUARANTEE IS GIVEN THAT ALL EXISTING UTILITIES ARE SHOWN OR THAT THE GIVEN LOCATIONS ARE EXACT. CONFIRMATION OF EXISTENCE AND EXACT LOCATION OF ALL SERVICES MUST BE OBTAINED FROM THE INDIVIDUAL UTILITIES BEFORE PROCEEDING WITH CONSTRUCTION.

DESIGNED BY: WRJ/RPB
DRAWN BY: DID/KLC
HOR. SCALE: 1:500
VERT. SCALE: 1:20
DATE: 10/04/21

CHECKED BY: WRJ
APPROVED BY: TGS
RELEASED FOR CONSTRUCTION: [Signature]
DATE: April 19, 2010

PROFESSIONAL'S SEAL
R. P. BRUCE
REGISTERED PROFESSIONAL ENGINEER

THE CITY OF WINNIPEG
PUBLIC WORKS DEPARTMENT
ENGINEERING DIVISION

INKSTER BOULEVARD WIDENING PROJECT
430m WEST OF OAK POINT HIGHWAY TO BROOKSIDE BOULEVARD
HORIZONTAL AND VERTICAL ALIGNMENT

CITY DRAWING NUMBER: P-3301-104
SHEET 72 OF 82
DRAWING No. 2-13
REV 0

AECOM
Certificate of Authorization
AECOM Canada Ltd.
No. 4671 Date: April 19, 2010

BID OPPORTUNITY NO. 232-2010