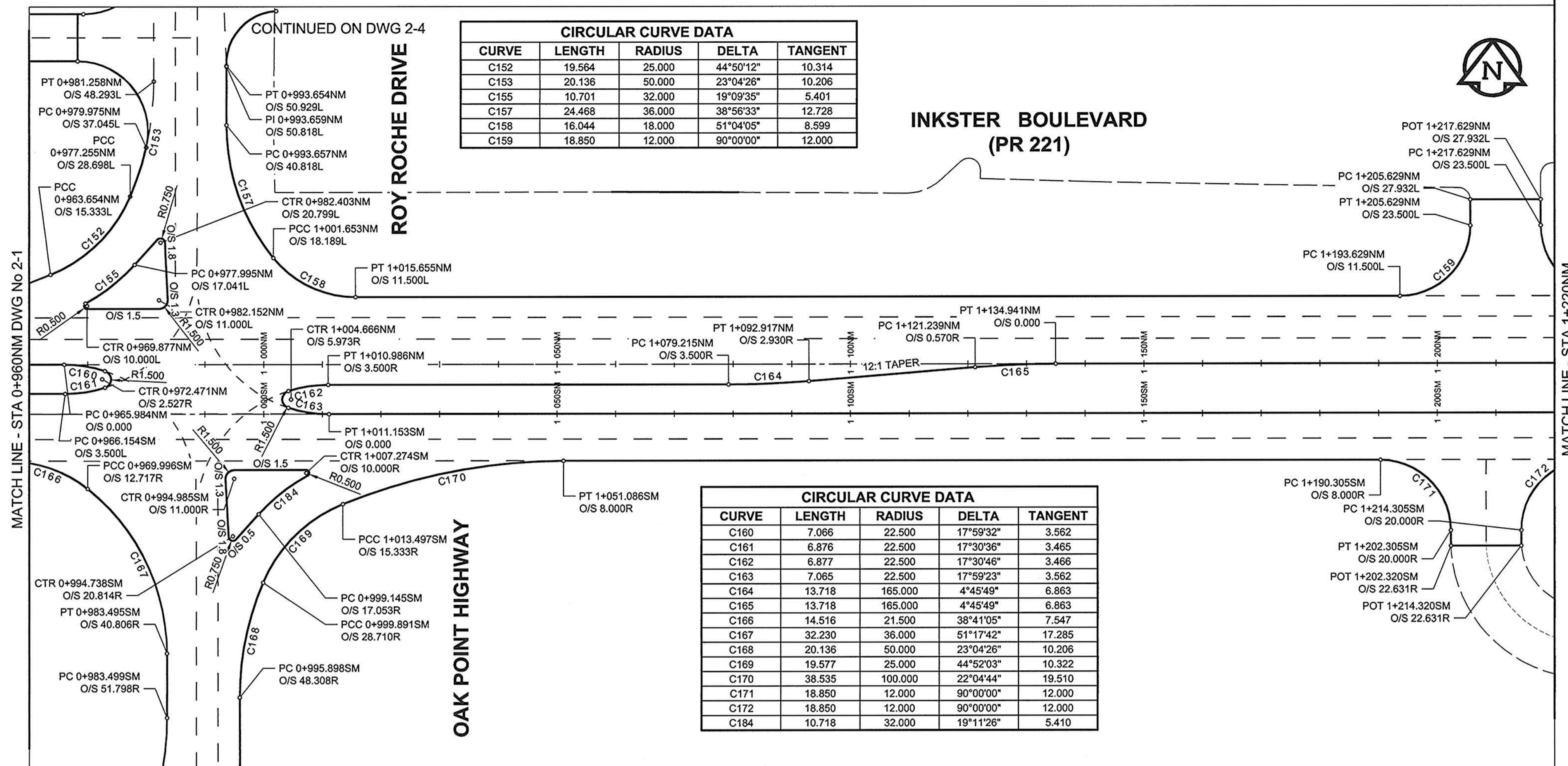


A1 SIZE 23.4" x 33.1" (594mm x 841mm)

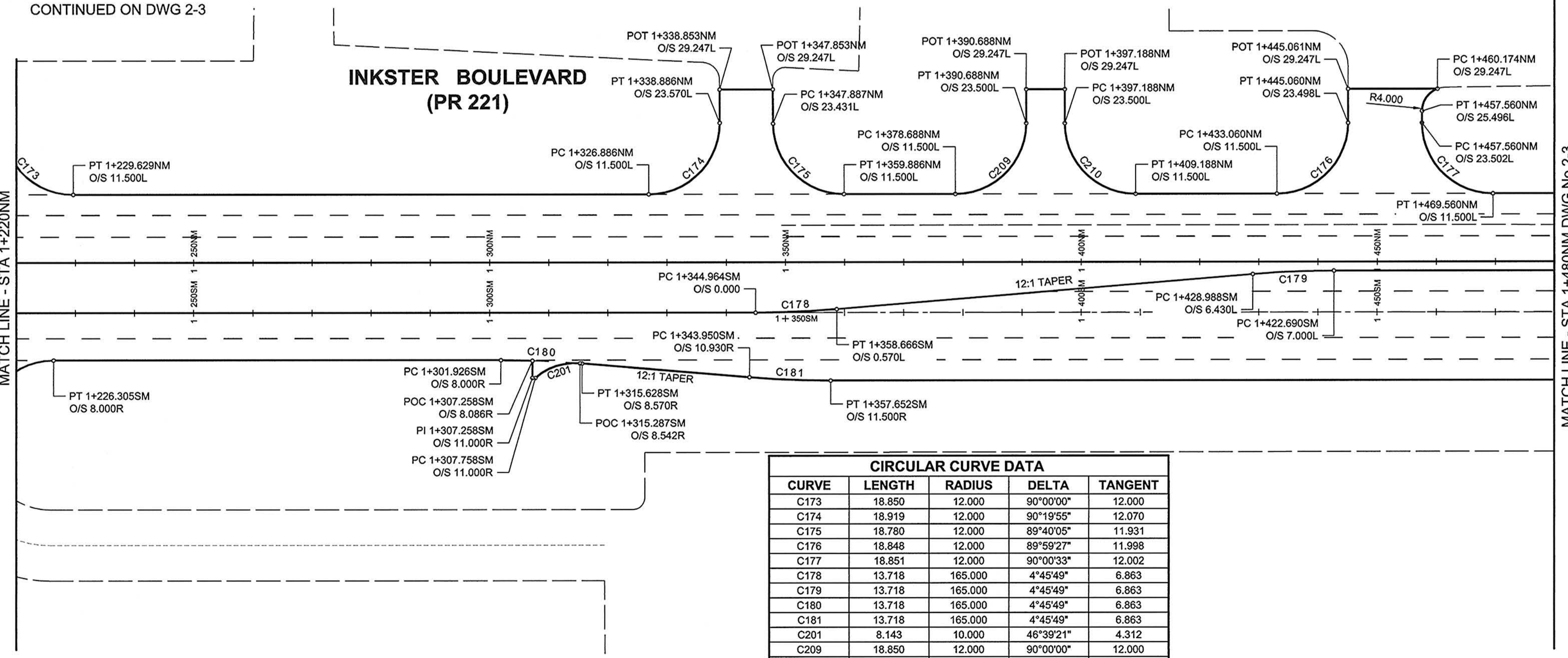
PLOT: 1004/16 4:15:04 PM

LJMA FILE NAME: 0265-411-00\_04-CT1025\_RX.dwg Saved By: daszpcdd



CURVE	LENGTH	RADIUS	DELTA	TANGENT
C152	19.564	25.000	44°50'12"	10.314
C153	20.136	50.000	23°04'26"	10.206
C155	10.701	32.000	19°09'35"	5.401
C157	24.468	36.000	38°56'33"	12.728
C158	16.044	18.000	51°04'05"	8.599
C159	18.850	12.000	90°00'00"	12.000

CURVE	LENGTH	RADIUS	DELTA	TANGENT
C160	7.066	22.500	17°59'32"	3.562
C161	6.876	22.500	17°30'36"	3.465
C162	6.877	22.500	17°30'46"	3.466
C163	7.065	22.500	17°59'23"	3.562
C164	13.718	165.000	4°45'49"	6.863
C165	13.718	165.000	4°45'49"	6.863
C166	14.516	21.500	38°41'05"	7.547
C167	32.230	36.000	51°17'42"	17.285
C168	20.136	50.000	23°04'26"	10.206
C169	19.577	25.000	44°52'03"	10.322
C170	38.535	100.000	22°04'44"	19.510
C171	18.850	12.000	90°00'00"	12.000
C172	18.850	12.000	90°00'00"	12.000
C184	10.718	32.000	19°11'26"	5.410



CURVE	LENGTH	RADIUS	DELTA	TANGENT
C173	18.850	12.000	90°00'00"	12.000
C174	18.919	12.000	90°19'55"	12.070
C175	18.780	12.000	89°40'05"	11.931
C176	18.848	12.000	89°59'27"	11.998
C177	18.851	12.000	90°00'33"	12.002
C178	13.718	165.000	4°45'49"	6.863
C179	13.718	165.000	4°45'49"	6.863
C180	13.718	165.000	4°45'49"	6.863
C181	13.718	165.000	4°45'49"	6.863
C201	8.143	10.000	46°39'21"	4.312
C209	18.850	12.000	90°00'00"	12.000
C210	18.850	12.000	90°00'00"	12.000

**AECOM**  
Certificate of Authorization  
AECOM Canada Ltd.  
No. 4671 Date: April 19/20

BID OPPORTUNITY NO. 232-2010

LOCATION APPROVED UNDERGROUND STRUCTURES	
SUPR. U/G STRUCTURES	DATE
COMMITTEE	

NOTE:  
LOCATION OF UNDERGROUND STRUCTURES AS SHOWN ARE BASED ON THE BEST INFORMATION AVAILABLE. BUT NO GUARANTEE IS GIVEN THAT ALL EXISTING UTILITIES ARE SHOWN OR THAT THE GIVEN LOCATIONS ARE EXACT. CONFIRMATION OF EXISTENCE AND EXACT LOCATION OF ALL SERVICES MUST BE OBTAINED FROM THE INDIVIDUAL UTILITIES BEFORE PROCEEDING WITH CONSTRUCTION.

NO.	ISSUED FOR CONSTRUCTION	DATE	BY
0	10/04/21	10/04/21	DID
	REVISIONS	YYMM/DD	

AECOM	
DESIGNED BY	WRJ
CHECKED BY	RPB
DRAWN BY	DID
APPROVED BY	TGS
HOR. SCALE	1:500
VERT. SCALE	N/A
DATE	10/04/21

PROFESSIONAL'S SEAL  
PROVINCE OF MANITOBA  
R. P. BRUCE  
REGISTERED PROFESSIONAL ENGINEER  
CONSULTANT DRAWING NO.  
0265-411-00\_04-CT1025\_RX.dwg

**THE CITY OF WINNIPEG**  
PUBLIC WORKS DEPARTMENT  
ENGINEERING DIVISION

**INKSTER BOULEVARD WIDENING PROJECT**  
430m WEST OF OAK POINT HIGHWAY TO BROOKSIDE BOULEVARD  
HORIZONTAL GEOMETRY  
STA 0+960NM TO STA 1+480NM

CITY DRAWING NUMBER	P-3301-93
SHEET	61 OF 82
DRAWING No.	2-2
REV	0