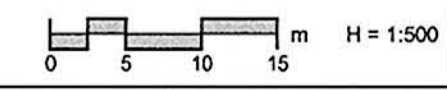
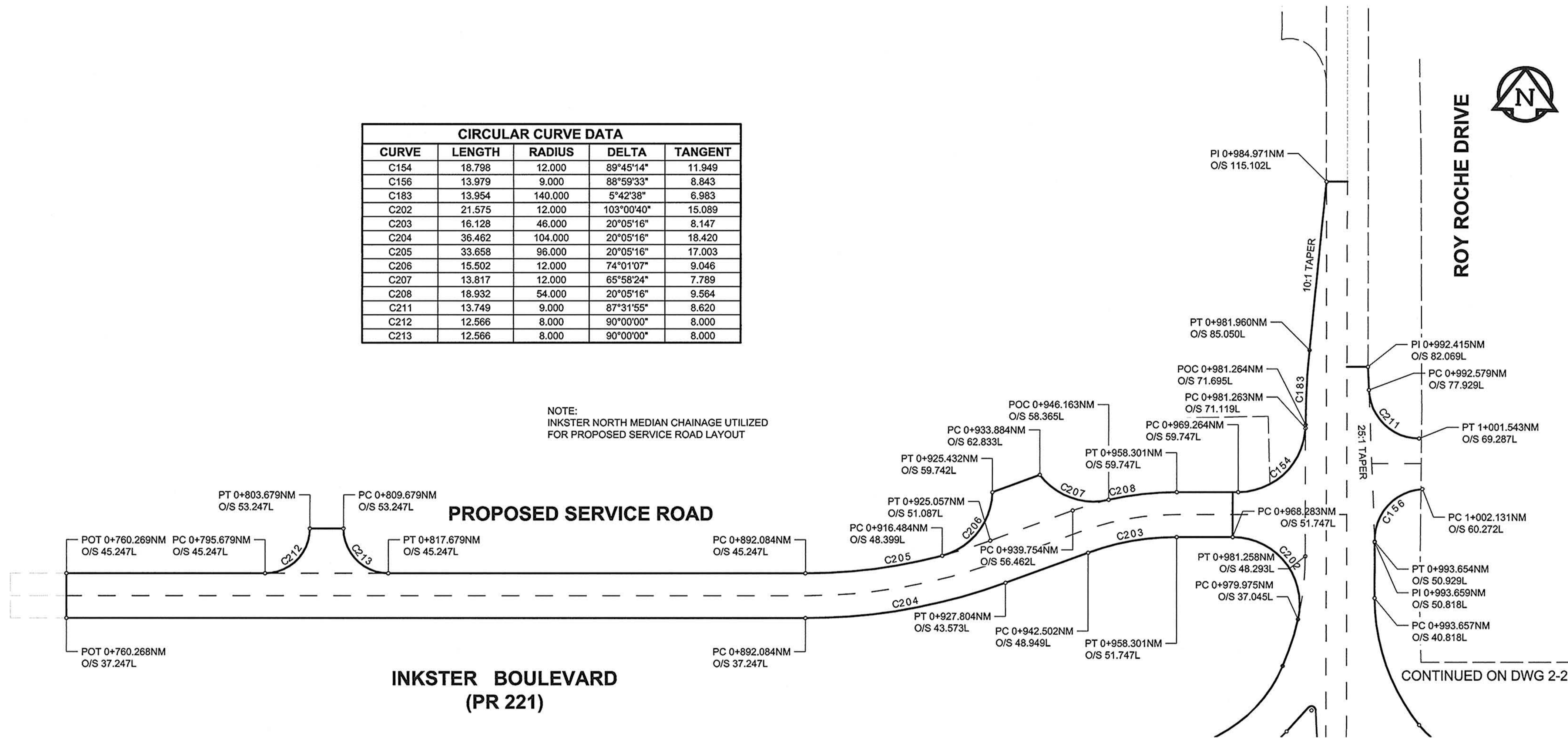


CIRCULAR CURVE DATA				
CURVE	LENGTH	RADIUS	DELTA	TANGENT
C154	18.798	12.000	89°45'14"	11.949
C156	13.979	9.000	88°59'33"	8.843
C183	13.954	140.000	5°42'38"	6.983
C202	21.575	12.000	103°00'40"	15.089
C203	16.128	46.000	20°05'16"	8.147
C204	36.462	104.000	20°05'16"	18.420
C205	33.658	96.000	20°05'16"	17.003
C206	15.502	12.000	74°01'07"	9.046
C207	13.817	12.000	65°58'24"	7.789
C208	18.932	54.000	20°05'16"	9.564
C211	13.749	9.000	87°31'55"	8.620
C212	12.566	8.000	90°00'00"	8.000
C213	12.566	8.000	90°00'00"	8.000

NOTE:  
INKSTER NORTH MEDIAN CHAINAGE UTILIZED  
FOR PROPOSED SERVICE ROAD LAYOUT



**AECOM**  
Certificate of Authorization  
AECOM Canada Ltd.  
No. 4671 Date: April 19/16

BID OPPORTUNITY NO. 232-2010

LOCATION APPROVED UNDERGROUND STRUCTURES		BM - ELEV -
SUPR. UG STRUCTURES	DATE	
COMMITTEE		
NOTE: LOCATION OF UNDERGROUND STRUCTURES AS SHOWN ARE BASED ON THE BEST INFORMATION AVAILABLE. BUT NO GUARANTEE IS GIVEN THAT ALL EXISTING UTILITIES ARE SHOWN OR THAT THE GIVEN LOCATIONS ARE EXACT. CONFIRMATION OF EXISTENCE AND EXACT LOCATION OF ALL SERVICES MUST BE OBTAINED FROM THE INDIVIDUAL UTILITIES BEFORE PROCEEDING WITH CONSTRUCTION.		
NO.	ISSUED FOR CONSTRUCTION	10/04/21 DID
NO.	REVISIONS	YYMMDD BY

<b>AECOM</b>			
DESIGNED BY	RPB	CHECKED BY	WRJ
DRAWN BY	DID	APPROVED BY	TGS
HOR. SCALE	1:500	RELEASED FOR CONSTRUCTION	
VERT. SCALE	N/A	DATE	April 19, 2016

PROFESSIONAL'S SEAL  
PROVINCE OF MANITOBA  
REGISTERED PROFESSIONAL ENGINEER  
R. P. BRUCE  
CONSULTANT DRAWING NO.  
0265-411-00-04-CT1027\_RX.dwg

**THE CITY OF WINNIPEG**  
PUBLIC WORKS DEPARTMENT  
ENGINEERING DIVISION

**INKSTER BOULEVARD WIDENING PROJECT**  
430m WEST OF OAK POINT HIGHWAY TO BROOKSIDE BOULEVARD  
HORIZONTAL GEOMETRY

CITY DRAWING NUMBER P-3301-95  
SHEET 63 OF 82  
DRAWING No. 2-4 REV 0

**METRIC**  
WHOLE NUMBERS INDICATE MILLIMETRES  
DECIMALIZED NUMBERS INDICATE METRES