

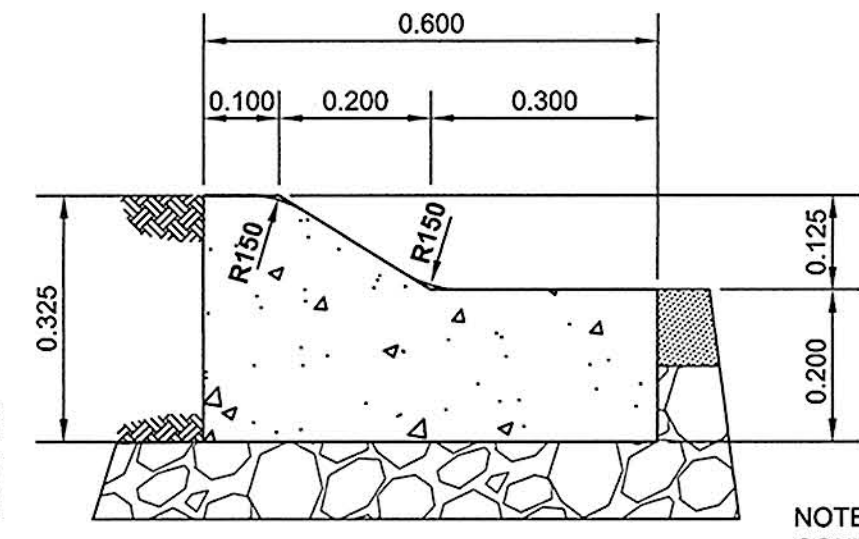
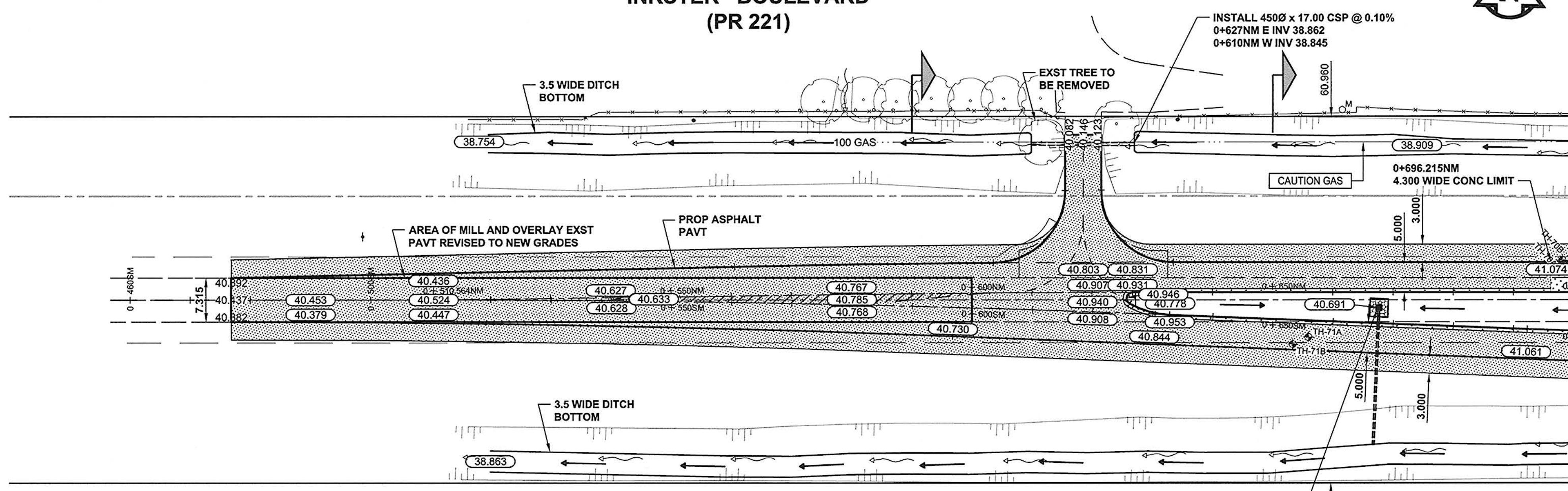
A1 SIZE 23.4" x 33.1" (594mm x 841mm)

PLOT: 10/04/16 4:15:45 PM

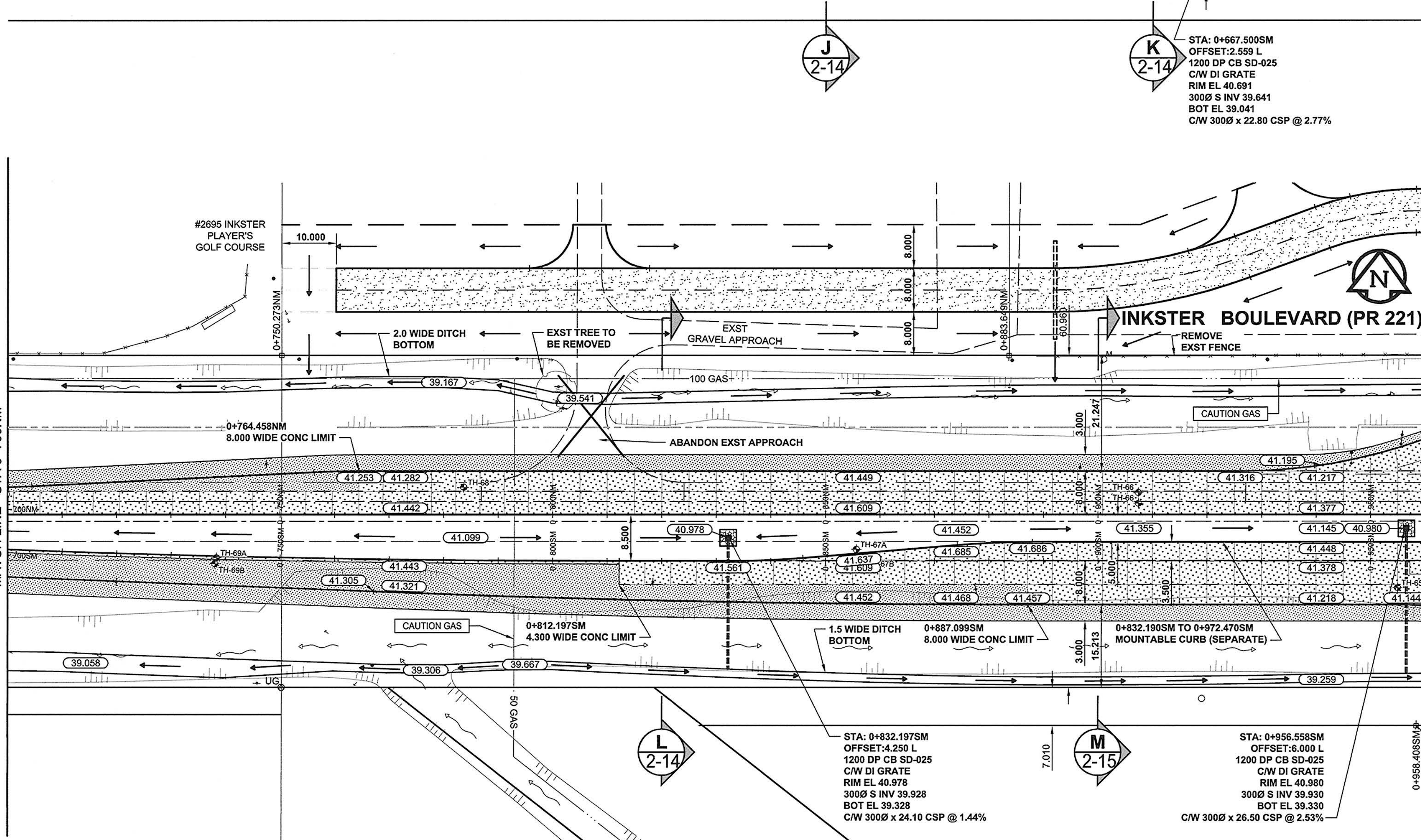
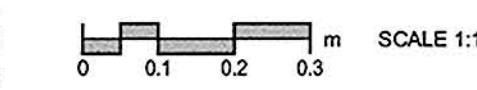
AECOM FILE NAME: 0265-411-00_04-CT1028_RX.dwg Saved By: dcszpcdd

INKSTER BOULEVARD (PR 221)

#2695 INKSTER PLAYER'S GOLF COURSE



MOUNTABLE CURB AND GUTTER



- NOTES**
1. ADJUST EXST. MH AND CB RIMS TO NEW GRADES AS SHOWN.
 2. LIGHT STANDARDS, HYDRO POLES, AND ANCHORS MAY REQUIRE TEMPORARY SUPPORT/REMOVAL OR REPLACEMENT AT THE EXPENSE OF THE CONTRACTOR. LIGHT STANDARD BASES TO BE PERMANENTLY REMOVED FROM SITE BY CONTRACTOR AT LOCATIONS INDICATED.
 3. CONTRACTOR SHALL TAKE PRECAUTIONARY STEPS TO PROTECT EXISTING BOULEVARD TREES FROM DAMAGE RESULTING FROM CONSTRUCTION ACTIVITIES WITHIN THE LIMITS OF CONSTRUCTION AS OUTLINED IN THE SPECIFICATIONS.
 4. ADD 200.000m TO ABBREVIATED ELEVATIONS TO OBTAIN GEODETIC ELEVATIONS.
 5. CONTRACTOR SHALL TAKE PRECAUTIONARY STEPS TO CONTROL EROSION BY INSTALLING STRAW WATTLE AT LOCATIONS DIRECTED BY CONTRACT ADMINISTRATOR.

Scale: 0 5 10 15 m H=1:500

Certificate of Authorization
AECOM Canada Ltd.
No. 4671 Date: April 19/20

METRIC
WHOLE NUMBERS INDICATE MILLIMETRES
DECIMALIZED NUMBERS INDICATE METRES

BID OPPORTUNITY NO.232-2010

EXISTING	LEGEND - PLAN	NEW	EXISTING	LEGEND - PLAN	NEW	EXISTING	LEGEND - PLAN	NEW	
	GAS		MANHOLE		CONCRETE PAVEMENT		LOCATION APPROVED		BM REFER TO ELEV DWG 1-1
	MTS		CATCH BASIN / CATCH PIT		ASPHALT PAVEMENT		SUPR. U/G STRUCTURES		DATE COMMITTEE
	HYDRO		CURB INLET WITH BOX		CONC. SIDEWALK/MEDIAN		NOTE:		
	CATV/FO		TREE		PAVING STONE		LOCATION OF UNDERGROUND STRUCTURES AS SHOWN ARE BASED ON THE BEST INFORMATION AVAILABLE, BUT NO GUARANTEE IS GIVEN THAT ALL EXISTING UTILITIES ARE SHOWN OR THAT THE GIVEN LOCATIONS ARE EXACT. CONFIRMATION OF EXISTENCE AND EXACT LOCATION OF ALL SERVICES MUST BE OBTAINED FROM THE INDIVIDUAL UTILITIES BEFORE PROCEEDING WITH CONSTRUCTION.		
	TRAFFIC SIGNALS/PIT		TEST HOLE		GRAVEL				
	LAND DRAINAGE SEWER		PROPERTY LINE		RAMP CURB				
	SANITARY/COMBINED SEWER		SURVEY BAR		PLANING/REMOVAL				
	SSP/DCP		FENCE						
	WATERMAIN		BOC/EOPAVT						
	SUBDRAIN		ELEVATION						
	DITCH		TRAFFIC SIGN						

LOCATION APPROVED
UNDERGROUND STRUCTURES

SUPR. U/G STRUCTURES DATE COMMITTEE

NOTE:
LOCATION OF UNDERGROUND STRUCTURES AS SHOWN ARE BASED ON THE BEST INFORMATION AVAILABLE, BUT NO GUARANTEE IS GIVEN THAT ALL EXISTING UTILITIES ARE SHOWN OR THAT THE GIVEN LOCATIONS ARE EXACT. CONFIRMATION OF EXISTENCE AND EXACT LOCATION OF ALL SERVICES MUST BE OBTAINED FROM THE INDIVIDUAL UTILITIES BEFORE PROCEEDING WITH CONSTRUCTION.

NO.	REVISIONS	YYMM/DD	BY
0	ISSUED FOR CONSTRUCTION	10/04/21	DID

DESIGNED BY	WRJ/RPB	CHECKED BY	WRJ
DRAWN BY	DID/KLC	APPROVED BY	TGS
HOR. SCALE	1:500	RELEASED FOR CONSTRUCTION	
VERT. SCALE	1:20		
DATE	10/04/21	DATE	April 19, 2020

PROFESSIONAL'S SEAL

PROVINCE OF MANITOBA
REGISTERED PROFESSIONAL ENGINEER
R. P. BRUCE

CONSULTANT DRAWING NO.
0265-411-00_04-CT1028_RX.dwg

THE CITY OF WINNIPEG
PUBLIC WORKS DEPARTMENT
ENGINEERING DIVISION

INKSTER BOULEVARD WIDENING PROJECT
430m WEST OF OAK POINT HIGHWAY TO BROOKSIDE BOULEVARD
HORIZONTAL ALIGNMENT
STA 0+440 TO STA 0+960

CITY DRAWING NUMBER P-3301-96
SHEET 64 OF 82
DRAWING No. 2-5
REV 0