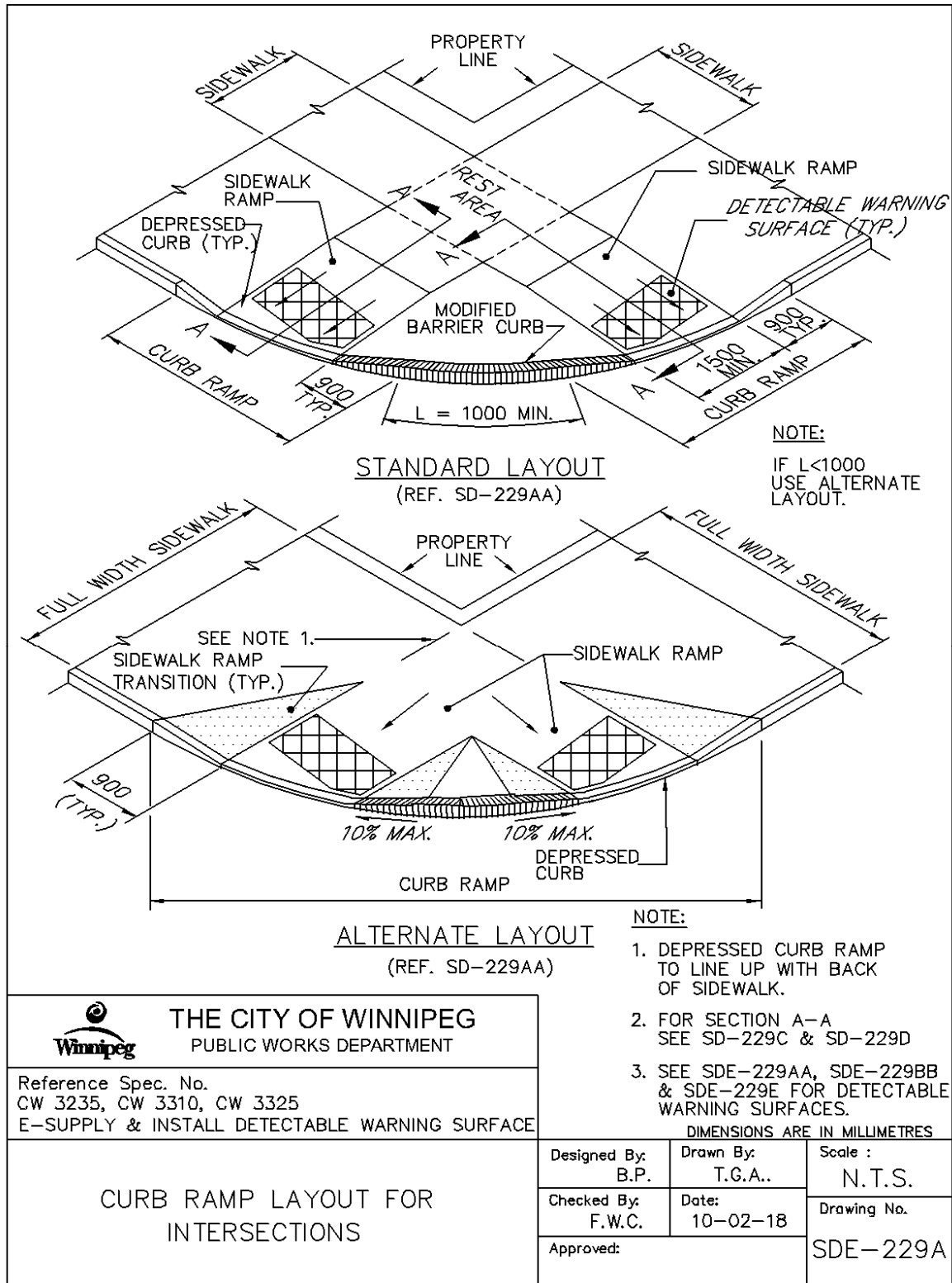
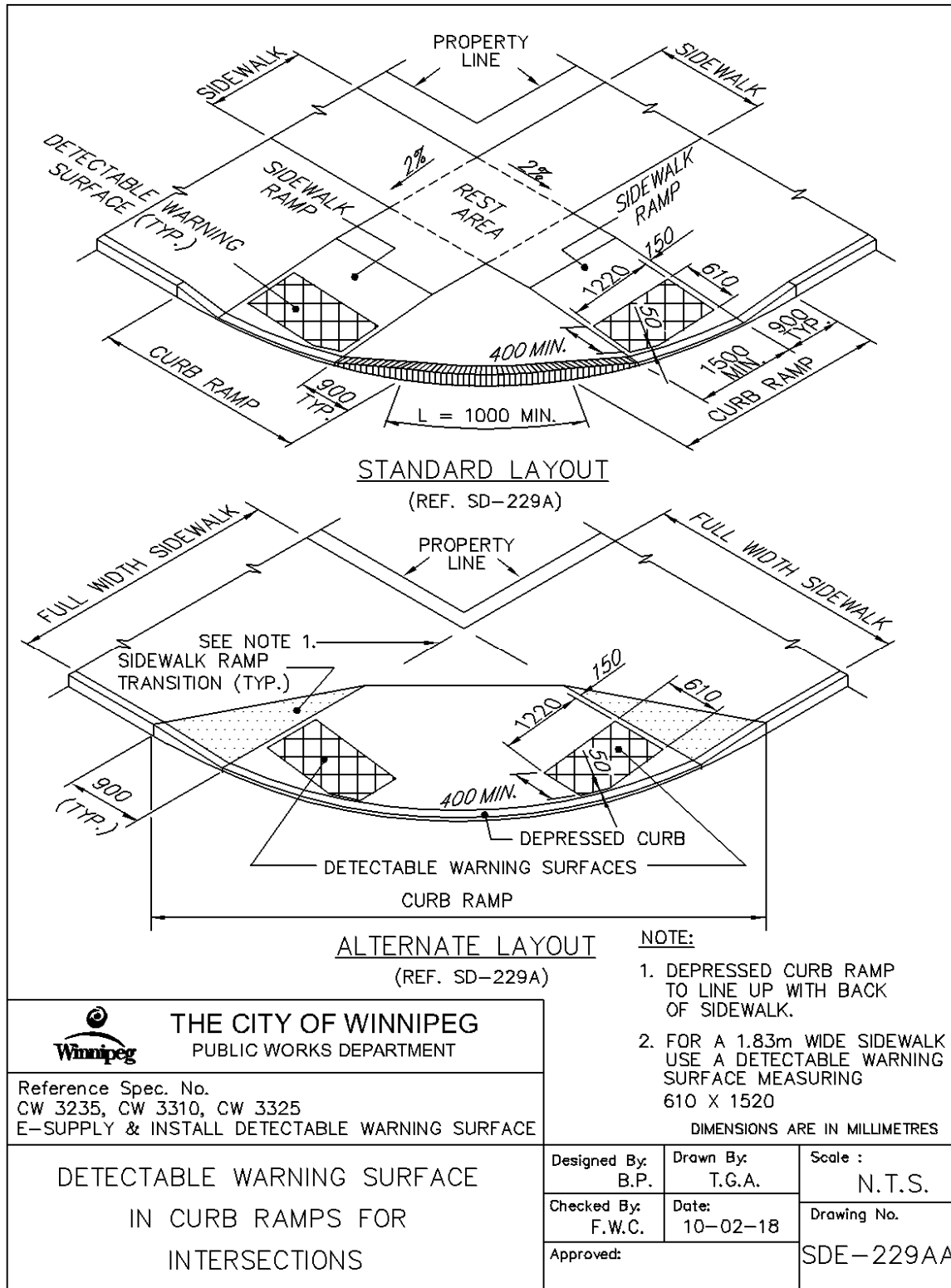
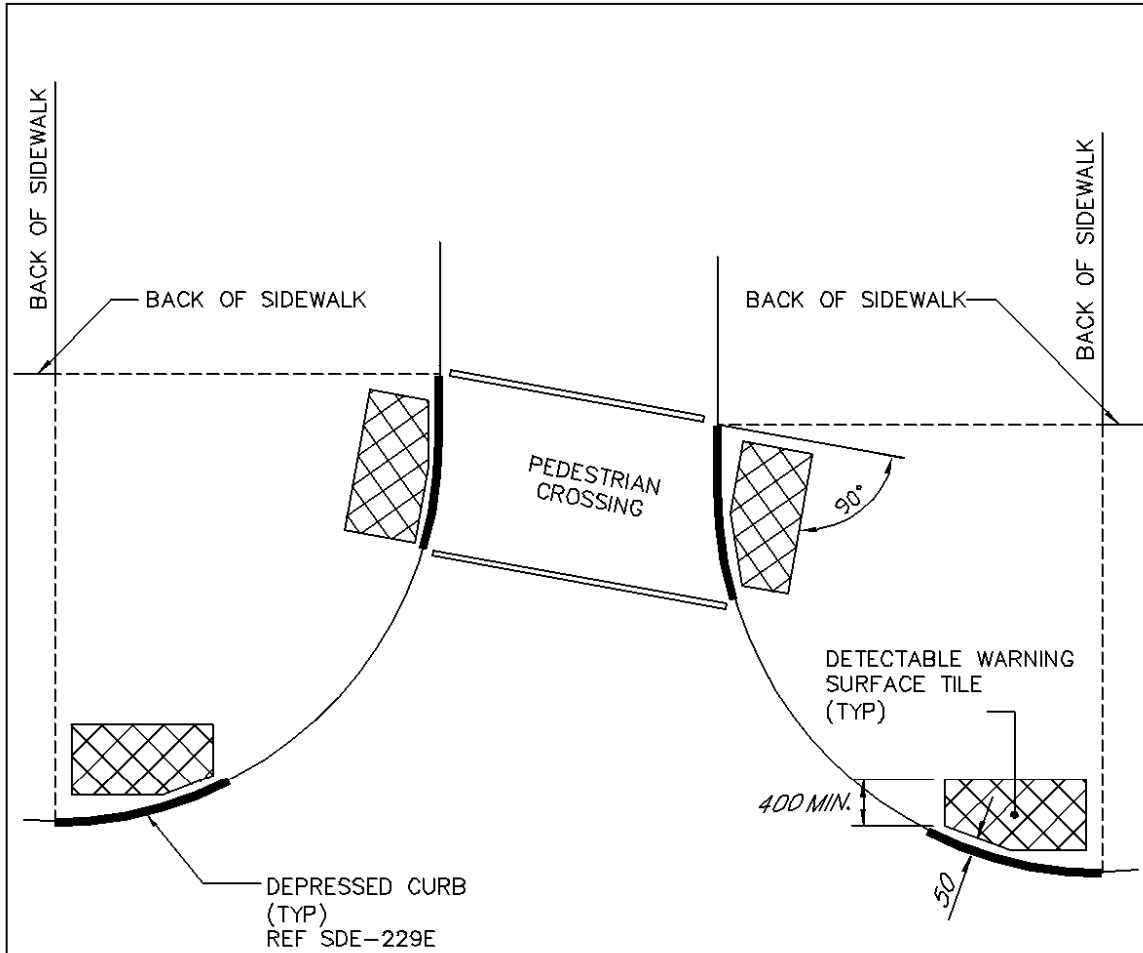


APPENDIX 'B'

DETECTABLE WARNING SURFACE TILES DRAWINGS AND INSTALLATION MANUAL




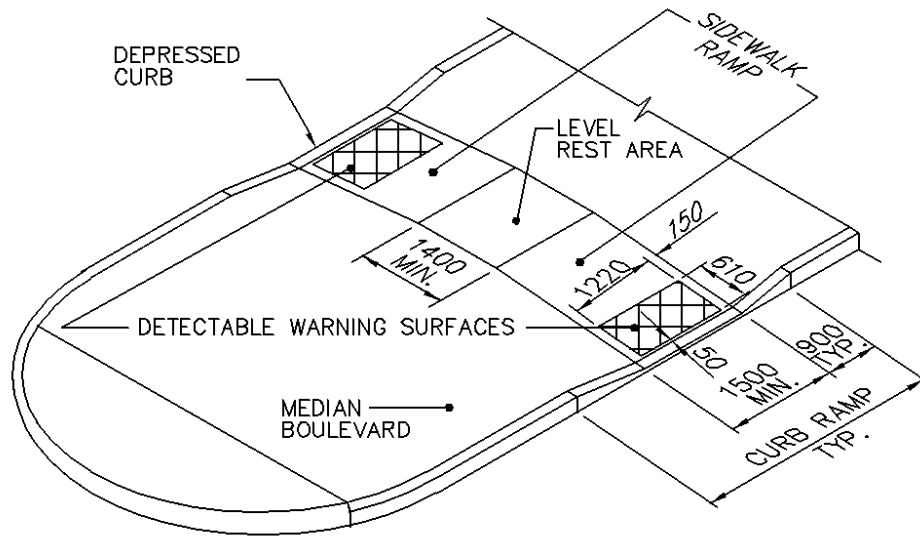




NOTES:

1. LOCATE GRATINGS, ACCESS COVERS AND OTHER APPURTENANCES OUTSIDE OF CURB RAMPS, DEPRESSED CURBS, CLEAR SPACE LANDINGS AND GUTTERS AS DIRECTED BY THE CONTRACT ADMINISTRATOR.
2. LOCATE END OF DEPRESSED CURB IN LINE WITH PROJECTED BACK OF SIDEWALK.


 THE CITY OF WINNIPEG PUBLIC WORKS DEPARTMENT	DIMENSIONS ARE IN MILLIMETRES		
Reference Spec. No. CW 3235, CW 3310, CW 3325 E—SUPPLY & INSTALL DETECTABLE WARNING SURFACE	Designed By: B.P.	Drawn By: T.G.A.	Scale : N.T.S.
CURB RAMP LAYOUT FOR OFFSET INTERSECTIONS	Checked By: F.W.C.	Date: 10-02-18	Drawing No. SDE-229AB
	Approved:		

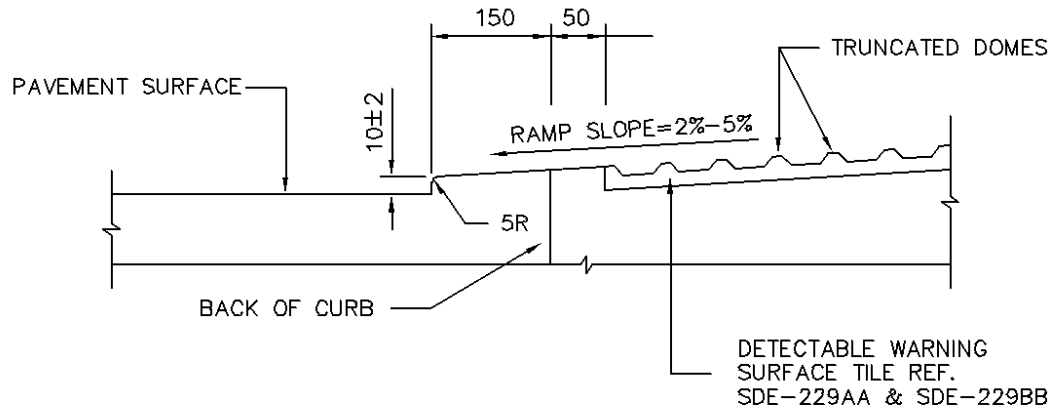


MEDIAN SIDEWALK CROSSING
 (REF. SD-229B)

NOTE:

1. FOR NARROW MEDIANS AND REFUGE ISLANDS < 1.32m IN WIDTH, PLACE DETECTABLE WARNING SURFACE FULL WIDTH, MAINTAINING 50mm SPACING FROM BACK OF CURB.
2. DETECTABLE WARNING SURFACE SHALL NOT BE PLACED AT PRIVATE APPROACHES OR ALLEYS.


 <div>THE CITY OF WINNIPEG PUBLIC WORKS DEPARTMENT</div>		DIMENSIONS ARE IN MILLIMETRES	
Reference Spec. No. CW 3235, CW 3310, CW 3325 E—SUPPLY & INSTALL DETECTABLE WARNING SURFACE			
DETECTABLE WARNING SURFACE IN CURB RAMPS FOR MEDIANS	Designed By: B.P.	Drawn By: T.G.A.	Scale : N.T.S.
	Checked By: F.W.C.	Date: 10—12—18	Drawing No.
	Approved:		SDE—229BB



DEPRESSED CURB

NOTES:

- 1) SIDEWALK RAMP SURFACE SHALL BE GIVEN A PARALLEL TEXTURED BROOM FINISH.
- 2) INSTALL DETECTABLE WARNING SURFACE SO THAT THE TOP OF THE TRUNCATED DOMES ARE FLUSH WITH THE SURFACE OF THE ADJACENT SIDEWALK.

 THE CITY OF WINNIPEG PUBLIC WORKS DEPARTMENT	DIMENSIONS ARE IN MILLIMETRES		
Reference Spec. No. CW 3235, CW 3310, CW 3325 E-SUPPLY & INSTALL DETECTABLE WARNING SURFACE	Designed By: B.P.	Drawn By: T.G.A.	Scale : N.T.S.
CURB RAMP DEPRESSED CURB	Checked By: F.W.C.	Date: 10-02-18	Drawing No.
	Approved:		SDE-229E

Manufacturer's Installation Manual

Armor-Tile Cast In Place

Inline Dome Detectable/Tactile Warning Surface Tile

- A. During Cast In Place Detectable/Tactile Warning Surface Tile installation procedures, ensure adequate safety guidelines are in place and that they are in accordance with the applicable industry and government standards.
- B. The specifications of the structural embedment flange system and related materials shall be in strict accordance with the contract documents and the guidelines set by their respective manufacturers. Not recommended for asphalt applications.
- C. The physical characteristics of the concrete shall be consistent with the contract specifications while maintaining a slump range of 4–7 to permit solid placement of the Cast In Place Detectable/Tactile Warning Surface Tile system. An overly wet mix will cause the tile to float. Under these conditions, suitable weights such as 2 concrete blocks or sandbags (25 lb) shall be placed on each tile.
- D. Prior to placement of the Cast In Place Detectable/Tactile Warning Surface Tile system, the contract drawings shall be reviewed.
- E. The concrete pouring and finishing operations require typical mason's tools, however, a 4' long level with electronic slope readout, 25 lb. weights, and a large non-marring rubber mallet are specific to the installation of the Cast In Place Detectable/Tactile Warning Surface Tile system. A vibrating mechanism such as that manufactured by Vibco can be employed, if desired. The vibrating unit should be fixed to a soft base such as wood, at least 1 foot square.
- F. The factory-installed plastic sheeting must remain in place during the entire installation process to prevent the splashing of concrete onto the finished surface of the tile.
- G. When preparing to set the tile, it is important that NO concrete be removed in the area to accept the tile. It is imperative that the installation technique eliminates any air voids under the tile. Holes in the tile perimeter allow air to escape during the installation process. Concrete will flow through the large holes in each embedment flange on the underside of the tile. This will lock the tile solidly into the cured concrete.
- H. The concrete shall be poured and finished true and smooth to the required dimensions and slope prior to the tile placement. Immediately after finishing concrete, the electronic level should be used to check that the required slope is achieved. The tile shall be placed in accordance with the contract drawings. The Cast In Place Detectable/Tactile Warning Surface Tiles shall be tamped (or vibrated) into the fresh concrete to ensure that the field level of the tile is flush to the adjacent concrete surface. The embedment process should not be accomplished by stepping on the tile as this may cause uneven setting which can result in air voids under the tile surface. ~~The contract drawings indicate that the tile field level (base of truncated dome) is flush to adjacent surfaces to permit proper water drainage and eliminate tripping hazards between adjacent finishes.~~
- I. In cold weather climates it is recommended that the Cast In Place Detectable/Tactile Warning Surface Tiles be set deeper such that the top of domes are level to the adjacent concrete on the top and sides of ramp and that the base of domes to allow water drainage. This installation will reduce the possibility of damage due to snow clearing operations.
- J. Immediately after placement, the tile elevation is to be checked to adjacent concrete. The elevation and slope should be set consistent with contract drawings to permit water drainage to curb as the design dictates.
- K. While concrete is workable, a 3/8" radius edging tool shall be used to create a finished edge of concrete, then a steel trowel shall be used to finish the concrete around the tile's perimeter, flush to the field level of the tile.
- L. During and after the tile installation and the concrete curing stage, it is imperative that there is no walking, leaning or external force placed on the tile that may rock the tile causing a void between the underside of tile and concrete.
- M. Following tile placement, review installation tolerances to contract drawings and adjust tile before the concrete sets. Two suitable weights of 25 lb each shall be placed on each tile as necessary to ensure solid contact of the underside of tile to concrete.
- N. Following the concrete curing stage, protective plastic wrap is to be removed from the tile surface by cutting the plastic with a sharp knife, tight to the concrete/tile interface. If concrete bled under the plastic, a soft brass wire brush will clean the residue without damage to the tile surface.
- O. If desired, individual tiles can be bolted together using 1/4 inch or equivalent hardware. This can help to ensure that adjacent tiles are flush to each other during the installation process. Tape or caulking can be placed on the underside of the bolted butt joint to ensure that concrete does not rise up between the tiles during installation. Any protective plastic wrap which was peeled back to facilitate bolting or cutting, should be replaced and taped to ensure that the tile surface remains free of concrete during the installation process.
- P. Tiles can be cut to custom sizes, or to make a radius, using a continuous rim diamond blade in a circular saw or mini-grinder. Use of a straightedge to guide the cut is advisable where appropriate.
- Q. ~~Any sound-amplifying plates on the underside of the tile, which are dislodged during handling or cutting, should be replaced and secured with construction adhesive. The air gap created between these plates and the bottom of the tile is important in preserving the detectability properties of the Armor-Tile system as required in various jurisdictions.~~