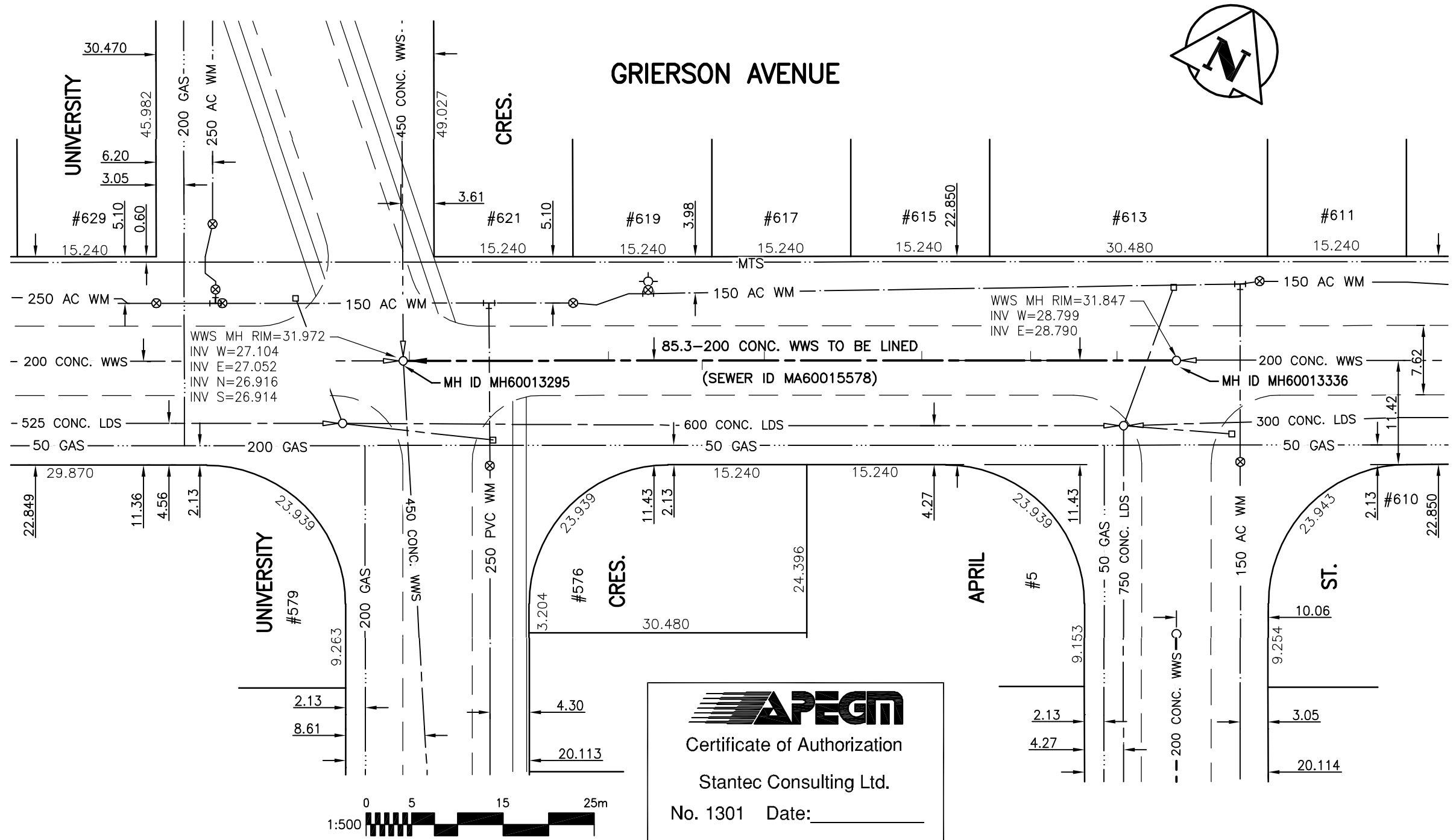


**SEWER JUNCTION INFORMATION  
FOR SEWER ID MA60015578**

REFERENCE—METERS EAST OF MANHOLE MH60013336

| DIST. FROM REF. MANHOLE | JUNCTION DIA. | CLOCK REF. | SERVICE TYPE | DESCRIPTION |
|-------------------------|---------------|------------|--------------|-------------|
| 6.5                     | 150           | 03         | JN           | LIVE        |
| 16.0                    | 150           | 02         | JN           | -           |
| 27.9                    | 150           | 02         | JN           | -           |
| 45.2                    | 150           | 02         | JN           | LIVE        |
| 52.0                    | 150           | 10         | CNI          | LIVE        |
| 62.3                    | 150           | 02         | JN           | LIVE        |
| 84.1                    | 150           | 06         | JN           | DROP PIPE   |

ALL JUNCTION INFORMATION  
BASED ON CCTV INSPECTION



**WARNING**

IF POWER EQUIPMENT OR EXPLOSIVES ARE TO BE USED FOR EXCAVATION ON THIS PROJECT THE CONTRACTOR MUST:

- 1) NOTIFY THE GAS COMPANY OF THE PROPOSED LOCATION OF EXCAVATION.
- 2) TAKE PRECAUTION TO AVOID DAMAGE TO GAS COMPANY INSTALLATIONS.

SEE PROVINCIAL REGULATION 140/92 FOR DETAILS

**METRIC**

WHOLE NUMBERS INDICATE MILLIMETRES  
DECIMALIZED NUMBERS INDICATE METRES

BENCH MARK: N. of Freedman Dr., E. of University Cres., Tblt. in top of most Wly. stair entrance on S. side of Ellis Bldg. (Food & Soil Sciences), 0.5 m E. & 2.0 m S. of S. wall.

**APEGM**  
Certificate of Authorization  
Stantec Consulting Ltd.  
No. 1301 Date: \_\_\_\_\_

BID OPPORTUNITY 245-2010

**LOCATION APPROVED  
UNDERGROUND STRUCTURES**

B.M. 77-09  
ELEV. 233.593m

SUPV. U/G STRUCTURES COMMITTEE DATE

NOTE:  
LOCATION OF UNDERGROUND STRUCTURES AS SHOWN ARE BASED ON THE BEST INFORMATION AVAILABLE BUT NO GUARANTEE IS GIVEN THAT ALL EXISTING UTILITIES ARE SHOWN OR THAT THE GIVEN LOCATIONS ARE EXACT. CONFIRMATION OF EXISTENCE AND EXACT LOCATION OF ALL SERVICES MUST BE OBTAINED FROM THE INDIVIDUAL UTILITIES BEFORE PROCEEDING WITH CONSTRUCTION.

| NO. | REVISIONS | DATE | BY |
|-----|-----------|------|----|
|     |           |      |    |



**Stantec Consulting Ltd.**

905 Waverley Street, Winnipeg, Manitoba  
Tel 204-489-5900 Fax 204-453-9012

|             |        |                            |          |
|-------------|--------|----------------------------|----------|
| DESIGNED BY | J.K.H. | CHECKED BY                 | W.A.B.   |
| DRAWN BY    | J.K.H. | APPROVED BY                | C.L.D.   |
| HOR. SCALE: | 1:500  | RELEASED FOR CONSTRUCTION: |          |
| VERTICAL:   | N/A    | DATE                       | 10.06.21 |

ENGINEER'S SEAL



CONSULTANT DRAWING NO.  
**C-101**



**THE CITY OF WINNIPEG  
WATER AND WASTE DEPARTMENT**

**2010 SEWER RENEWALS  
BY CIPP LINING - CONTRACT 14  
GRIERSON AVENUE**

MH AT APRIL ST. TO  
MH AT UNIVERSITY CR.

|   |           |
|---|-----------|
| SHEET   | OF        |
| <b>1</b>                                      | <b>26</b> |
| CAD FILE DRAWING NUMBER<br>12350c-101-735.dwg |           |
| CITY DRAWING NUMBER<br><b>9354</b>            |           |

W:\113\113333\113333.dwg (p) 11/11/2010 11:44 AM By: dclm