

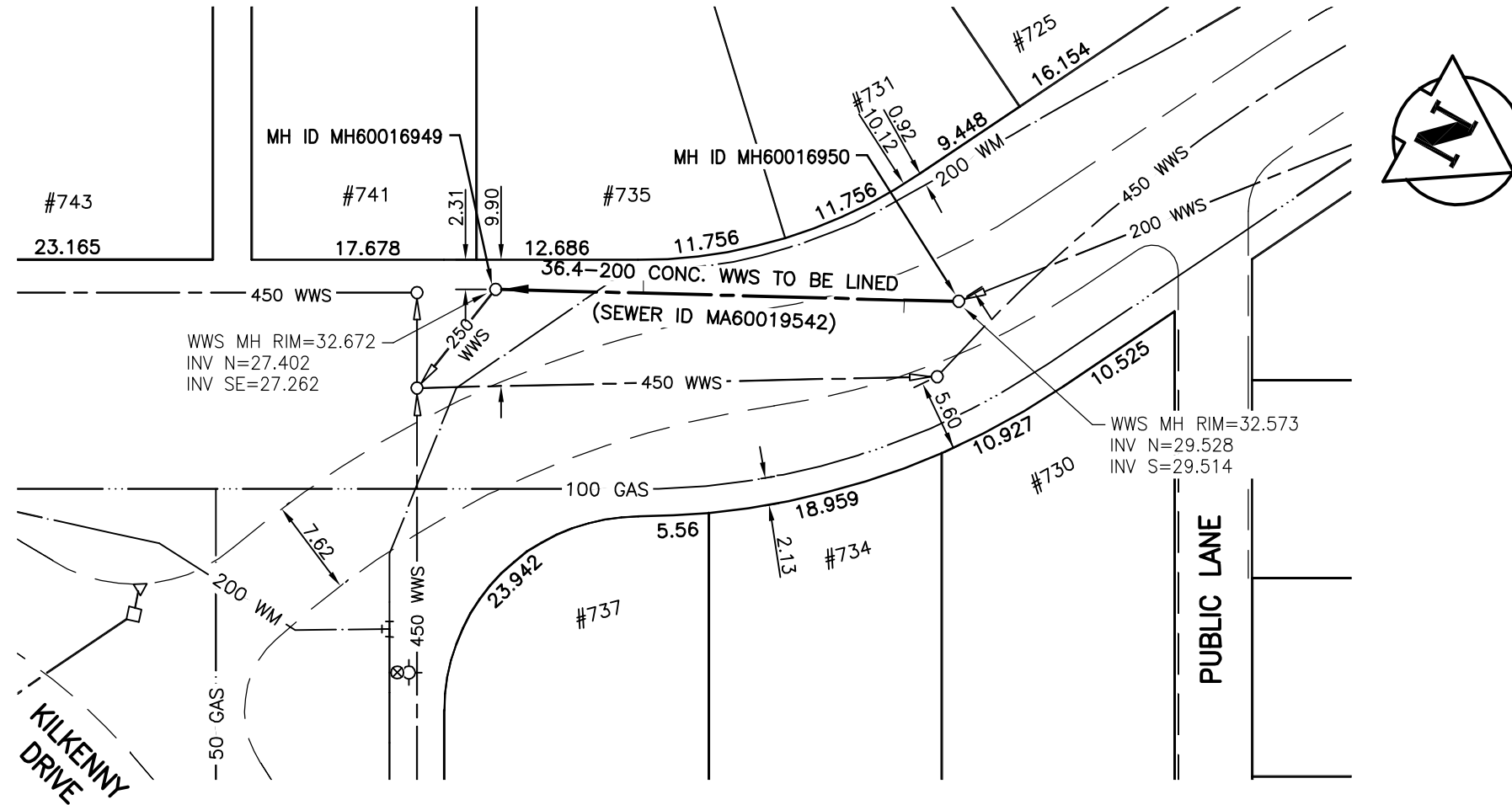
**SEWER JUNCTION INFORMATION
FOR SEWER ID MA60019542**

REFERENCE—METERS SOUTH OF MANHOLE MH60016950

DIST. FROM REF. MANHOLE	JUNCTION DIA.	CLOCK REF.	SERVICE TYPE	DESCRIPTION
4.3	150	10	CNI	—
24.8	150	02	CNI	—

ALL JUNCTION INFORMATION
BASED ON CCTV INSPECTION

PATRICIA AVENUE (WEST LEG)



WARNING

IF POWER EQUIPMENT OR EXPLOSIVES ARE TO BE USED FOR EXCAVATION ON THIS PROJECT THE CONTRACTOR MUST:

- 1) NOTIFY THE GAS COMPANY OF THE PROPOSED LOCATION OF EXCAVATION.
- 2) TAKE PRECAUTION TO AVOID DAMAGE TO GAS COMPANY INSTALLATIONS.

SEE PROVINCIAL REGULATION 140/92 FOR DETAILS

METRIC

WHOLE NUMBERS INDICATE MILLIMETRES
DECIMALIZED NUMBERS INDICATE METRES

BENCH MARK: S. side Kilkenny Dr., W. of Kings Dr., Tblt. in E. Conc. foundation of No. 612 Kilkenny Dr., 7.5 m S. & 0.1 m below stucco of N.E. Cor. of house.

BID OPPORTUNITY 245-2010



Certificate of Authorization

Stantec Consulting Ltd.

No. 1301 Date: _____

LOCATION APPROVED UNDERGROUND STRUCTURES

B.M. 76-16
ELEV. 232.103m

SUPV. U/G STRUCTURES COMMITTEE DATE

NOTE:
LOCATION OF UNDERGROUND STRUCTURES AS SHOWN ARE BASED ON THE BEST INFORMATION AVAILABLE BUT NO GUARANTEE IS GIVEN THAT ALL EXISTING UTILITIES ARE SHOWN OR THAT THE GIVEN LOCATIONS ARE EXACT. CONFIRMATION OF EXISTENCE AND EXACT LOCATION OF ALL SERVICES MUST BE OBTAINED FROM THE INDIVIDUAL UTILITIES BEFORE PROCEEDING WITH CONSTRUCTION.

NO.	REVISIONS	DATE	BY



Stantec Consulting Ltd.

905 Waverley Street, Winnipeg, Manitoba
Tel 204-489-5900 Fax 204-453-9012

DESIGNED BY	J.K.H.	CHECKED BY	W.A.B.
DRAWN BY	J.K.H.	APPROVED BY	C.L.D.
HOR. SCALE:	1:500	RELEASED FOR CONSTRUCTION:	
VERTICAL:	N/A		

ENGINEER'S SEAL



CONSULTANT DRAWING NO.
C-112



**THE CITY OF WINNIPEG
WATER AND WASTE DEPARTMENT**

**2010 SEWER RENEWALS
BY CIPP LINING - CONTRACT 14
PATRICIA AVENUE (WEST LEG)**

2ND MH N. OF KILKENNY DR. TO
1ST MH N. OF KILKENNY DR.

SHEET	OF
12	26
CAD FILE DRAWING NUMBER 12350c-112-735.dwg	
CITY DRAWING NUMBER 9365	