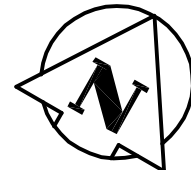
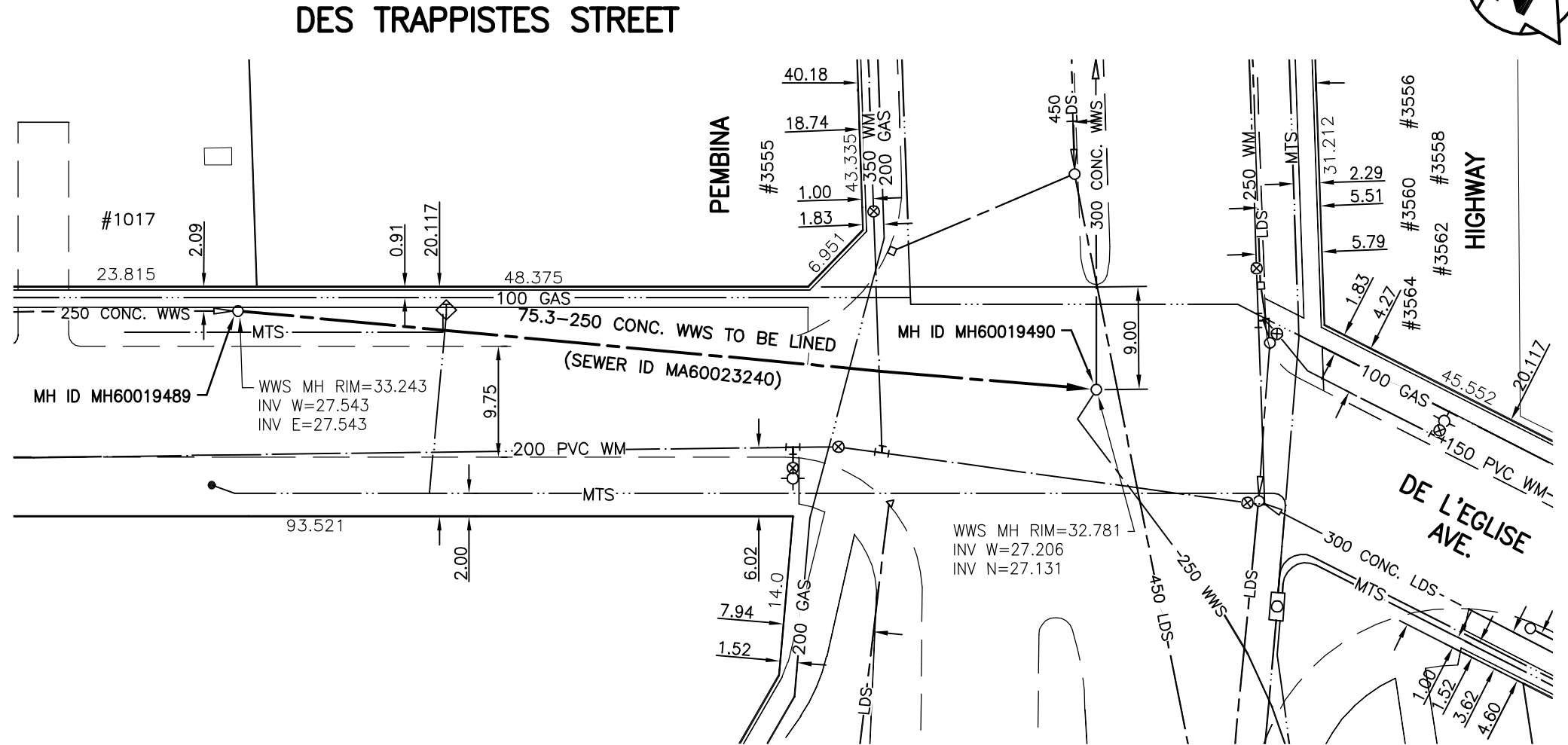


**SEWER JUNCTION INFORMATION
FOR SEWER ID MA60023240**

REFERENCE—METERS EAST OF MANHOLE MH60019489

DIST. FROM REF. MANHOLE	JUNCTION DIA.	CLOCK REF.	SERVICE TYPE	DESCRIPTION
50.2	150	12	JN	-

ALL JUNCTION INFORMATION
BASED ON CCTV INSPECTION



WARNING

IF POWER EQUIPMENT OR EXPLOSIVES ARE TO BE USED FOR EXCAVATION ON THIS PROJECT THE CONTRACTOR MUST:

- 1) NOTIFY THE GAS COMPANY OF THE PROPOSED LOCATION OF EXCAVATION.
- 2) TAKE PRECAUTION TO AVOID DAMAGE TO GAS COMPANY INSTALLATIONS.

SEE PROVINCIAL REGULATION 140/92 FOR DETAILS

METRIC

WHOLE NUMBERS INDICATE MILLIMETRES
DECIMALIZED NUMBERS INDICATE METRES

BENCH MARK: W. side Rue Landry, Tblt. in E. Conc. foundation of No. 15 Rue Landry, 3.3 m S. & 0.5 m below stucco from N.E. Cor. of dwelling.

BID OPPORTUNITY 245-2010



Certificate of Authorization

Stantec Consulting Ltd.

No. 1301 Date: _____

LOCATION APPROVED UNDERGROUND STRUCTURES

B.M. 88-11
ELEV. 233.529m

SUPV. U/G STRUCTURES COMMITTEE DATE

NOTE:
LOCATION OF UNDERGROUND STRUCTURES AS SHOWN ARE BASED ON THE BEST INFORMATION AVAILABLE BUT NO GUARANTEE IS GIVEN THAT ALL EXISTING UTILITIES ARE SHOWN OR THAT THE GIVEN LOCATIONS ARE EXACT. CONFIRMATION OF EXISTENCE AND EXACT LOCATION OF ALL SERVICES MUST BE OBTAINED FROM THE INDIVIDUAL UTILITIES BEFORE PROCEEDING WITH CONSTRUCTION.

NO.	REVISIONS	DATE	BY



Stantec Consulting Ltd.

905 Waverley Street, Winnipeg, Manitoba
Tel 204-489-5900 Fax 204-453-9012

DESIGNED BY	J.K.H.	CHECKED BY	W.A.B.
DRAWN BY	J.K.H.	APPROVED BY	C.L.D.
HOR. SCALE:	1:500	RELEASED FOR CONSTRUCTION:	
VERTICAL:	N/A		
NO.		DATE	10.06.21

ENGINEER'S SEAL



CONSULTANT DRAWING NO.
C-121



**THE CITY OF WINNIPEG
WATER AND WASTE DEPARTMENT**

**2010 SEWER RENEWALS
BY CIPP LINING - CONTRACT I4
DES TRAPPISTES STREET
1ST MH W. OF PEBINA HWY. TO
MH AT PEBINA HWY.**

SHEET	OF
21	26
CAD FILE DRAWING NUMBER 12350c-121-735.dwg	
CITY DRAWING NUMBER 9374	