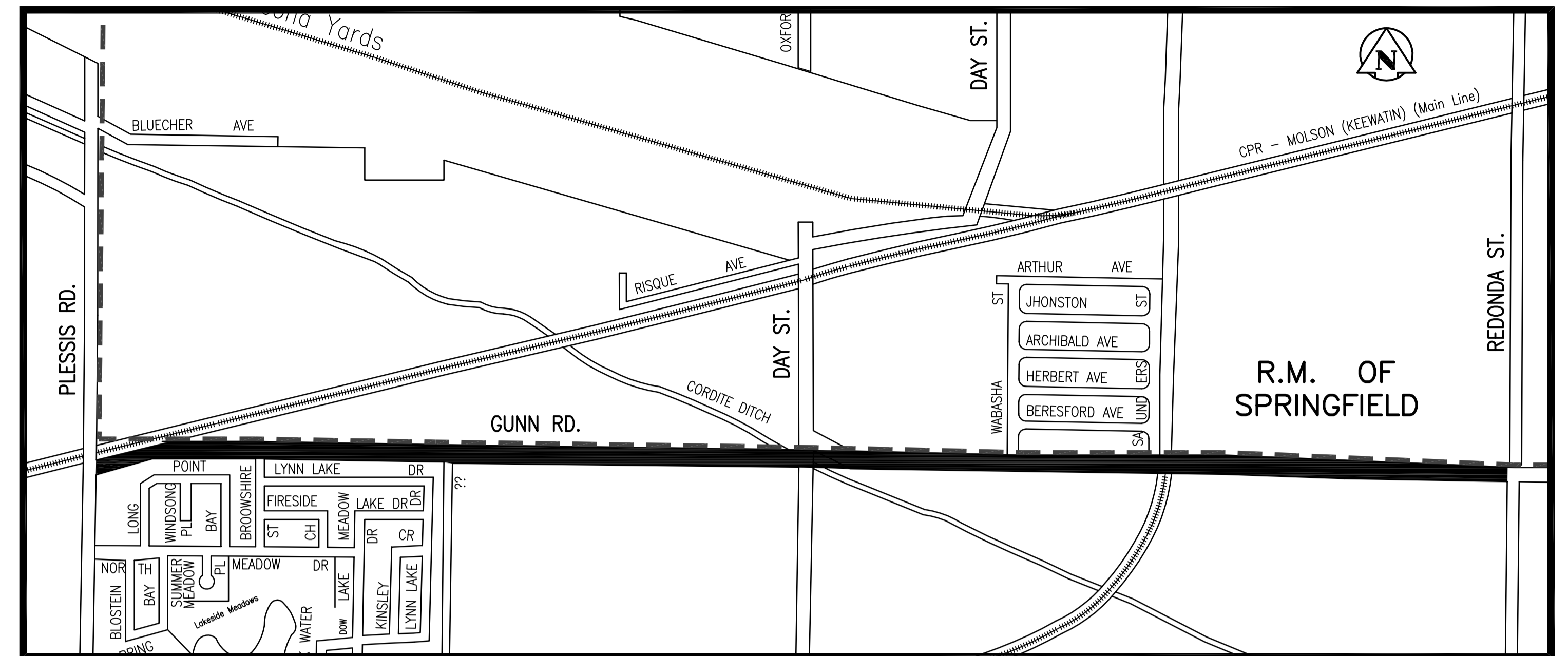




THE CITY OF WINNIPEG

PUBLIC WORKS DEPARTMENT
TRANSPORTATION ENGINEERING DIVISION



GUNN ROAD RECONSTRUCTION

PLESSIS ROAD TO REDONDA STREET

BID OPPORTUNITY No. 248-2010

DRAWING INDEX

P-3318-01	GUNN ROAD - PLESSIS RD. TO STA 0+675	SHEET 1 OF 29
P-3318-02	GUNN ROAD - STA 0+675 TO STA 0+800	SHEET 2 OF 29
P-3318-03	GUNN ROAD - STA 0+800 TO STA 0+925	SHEET 3 OF 29
P-3318-04	GUNN ROAD - STA 0+925 TO STA 1+050	SHEET 4 OF 29
P-3318-05	GUNN ROAD - STA 1+050 TO STA 1+175	SHEET 5 OF 29
P-3318-06	GUNN ROAD - STA 1+175 TO STA 1+300	SHEET 6 OF 29
P-3318-07	GUNN ROAD - STA 1+300 TO STA 1+425	SHEET 7 OF 29
P-3318-08	GUNN ROAD - STA 1+425 TO STA 1+550	SHEET 8 OF 29
P-3318-09	GUNN ROAD - STA 1+550 TO STA 1+675	SHEET 9 OF 29
P-3318-10	GUNN ROAD - STA 1+675 TO STA 1+800	SHEET 10 OF 29
P-3318-11	GUNN ROAD - STA 1+800 TO STA 1+925	SHEET 11 OF 29
P-3318-12	GUNN ROAD - STA 1+925 TO STA 2+050	SHEET 12 OF 29
P-3318-13	GUNN ROAD - STA 2+050 TO STA 2+175	SHEET 13 OF 29
P-3318-14	GUNN ROAD - STA 2+175 TO STA 2+300	SHEET 14 OF 29
P-3318-15	GUNN ROAD - STA 2+300 TO STA 2+425	SHEET 15 OF 29
P-3318-16	GUNN ROAD - STA 2+425 TO STA 2+550	SHEET 16 OF 29
P-3318-17	GUNN ROAD - STA 2+550 TO STA 2+675	SHEET 17 OF 29
P-3318-18	GUNN ROAD - STA 2+675 TO STA 2+800	SHEET 18 OF 29
P-3318-19	GUNN ROAD - STA 2+800 TO STA 2+925	SHEET 19 OF 29
P-3318-20	GUNN ROAD - STA 2+925 TO STA 3+050	SHEET 20 OF 29
P-3318-21	GUNN ROAD - STA 3+050 TO STA 3+175	SHEET 21 OF 29
P-3318-22	GUNN ROAD - STA 3+175 TO STA 3+300	SHEET 22 OF 29
P-3318-23	GUNN ROAD - STA 3+300 TO STA 3+410	SHEET 23 OF 29
P-3318-24	GUNN ROAD - STA 3+410 TO STA 3+550	SHEET 24 OF 29
P-3318-25	GUNN ROAD - STA 3+550 TO STA 3+675	SHEET 25 OF 29
P-3318-26	GUNN ROAD - STA 3+675 TO STA 3+800	SHEET 26 OF 29
P-3318-27	GUNN ROAD - STA 3+800 TO STA 3+875	SHEET 27 OF 29
P-3318-28	DAY STREET - STA 1+000 TO STA 1+120	SHEET 28 OF 29
P-3318-29	DAY STREET - STA 1+120 TO STA 1+172	SHEET 29 OF 29



Stantec Consulting Ltd.

WINNIPEG MANITOBA

RELEASED FOR CONSTRUCTION BY:

KEN TURKO, C.E.T. DATE:

CONSULTANT DRAWING No.

G-002-729

CITY DRAWING No.

P-3318-00

CAD FILE DRAWING No.

05170g-002-726.dwg

V:\1137\winn\11705210\winn\A02_design\sheet_files\contract_2\05170g-002-726.dwg
2010-03-25 03:01PM By: lgs