

WARNING
 IF POWER EQUIPMENT OR EXPLOSIVES ARE TO BE USED FOR EXCAVATION ON THIS PROJECT THE CONTRACTOR MUST:
 1) NOTIFY THE GAS COMPANY OF THE PROPOSED LOCATION OF EXCAVATION.
 2) TAKE PRECAUTION TO AVOID DAMAGE TO GAS COMPANY INSTALLATIONS.
 SEE PROVINCIAL REGULATION 140/92 FOR DETAILS

METRIC
 WHOLE NUMBERS INDICATE MILLIMETRES
 DECIMALIZED NUMBERS INDICATE METRES

150 W.M.	150 W.M.	150 W.M.	150 W.M.	150 W.M.	150 W.M.	150 W.M.	150 W.M.
WATERMAIN	WATERMAIN	HYDRO	HYDRO	WATERMAIN	WATERMAIN	WATERMAIN	WATERMAIN
HYDRANT	HYDRANT	M.T.S.	M.T.S.	HYDRANT, VALVE	HYDRANT, VALVE	LAND DRAINAGE SEWER	LAND DRAINAGE SEWER
VALVE	VALVE	CONCRETE	CONCRETE	LAND DRAINAGE SEWER	LAND DRAINAGE SEWER	WASTE WATER SEWER	WASTE WATER SEWER
LAND DRAINAGE SEWER	LAND DRAINAGE SEWER	ASPHALT	ASPHALT	WASTE WATER SEWER	WASTE WATER SEWER	SIDEWALK	SIDEWALK
WASTE WATER SEWER	WASTE WATER SEWER	SIDEWALK	SIDEWALK	SIDEWALK	SIDEWALK	NORTH OR WEST GUTTER	NORTH OR WEST GUTTER
MANHOLE	MANHOLE	PROPERTY LINE	PROPERTY LINE	NORTH OR WEST GUTTER	NORTH OR WEST GUTTER	SOUTH OR EAST GUTTER	SOUTH OR EAST GUTTER
CATCH BASIN	CATCH BASIN	SURVEY BAR	SURVEY BAR	SOUTH OR EAST GUTTER	SOUTH OR EAST GUTTER	NORTH OR WEST DITCH	NORTH OR WEST DITCH
CURB INLET	CURB INLET	DITCH	DITCH	NORTH OR WEST DITCH	NORTH OR WEST DITCH	SOUTH OR EAST DITCH	SOUTH OR EAST DITCH
JUNCTIONS	JUNCTIONS	ELEVATION	ELEVATION	SOUTH OR EAST DITCH	SOUTH OR EAST DITCH	NORTH OR WEST DITCH	NORTH OR WEST DITCH
CULVERT	CULVERT	SIDEWALK RAMP	SIDEWALK RAMP	NORTH OR WEST DITCH	NORTH OR WEST DITCH	SOUTH OR EAST DITCH	SOUTH OR EAST DITCH
GAS	GAS	HYDRO POLE	HYDRO POLE	SOUTH OR EAST DITCH	SOUTH OR EAST DITCH		
EXISTING	LEGEND-PLAN	PROPOSED	EXISTING	LEGEND-PLAN	PROPOSED	EXISTING	LEGEND-PROFILE

LOCATION APPROVED UNDERGROUND STRUCTURES
 SUPV. U/G STRUCTURES COMMITTEE DATE
 NOTE:
 LOCATION OF UNDERGROUND STRUCTURES AS SHOWN ARE BASED ON THE BEST INFORMATION AVAILABLE BUT NO GUARANTEE IS GIVEN THAT ALL EXISTING UTILITIES ARE SHOWN OR THAT THE GIVEN LOCATIONS ARE EXACT. CONFIRMATION OF EXISTENCE AND EXACT LOCATION OF ALL SERVICES MUST BE OBTAINED FROM THE INDIVIDUAL UTILITIES BEFORE PROCEEDING WITH CONSTRUCTION.

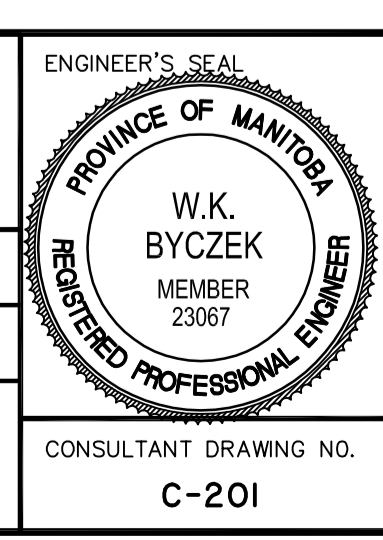
B.M. ELEV.	NO.	REVISIONS	DATE	BY
	0	ISSUED FOR TENDER	10.03.25	W.K.B.

Stantec Consulting Ltd.
 905 Waverley Street, Winnipeg, Manitoba
 Tel 204-489-5900 Fax 204-453-9012

DESIGNED BY: W.K.B. CHECKED BY: V.M.M.
 DRAWN BY: R.V. APPROVED BY: W.K.B.

HOR. SCALE: 1:250
 VERTICAL: 1:10

RELEASED FOR CONSTRUCTION: DATE



THE CITY OF WINNIPEG
 PUBLIC WORKS DEPARTMENT
 ENGINEERING DIVISION

GUNN ROAD
 PLESSIS ROAD TO REDONDA STREET
 PLESSIS ROAD TO STA. 0+675
 ROAD RECONSTRUCTION

SHEET 1 OF 29
 CAD FILE DRAWING NUMBER 05170c-201-726.dwg
 CITY DRAWING NUMBER P-3318-01

CONSULTANT DRAWING NO. C-201