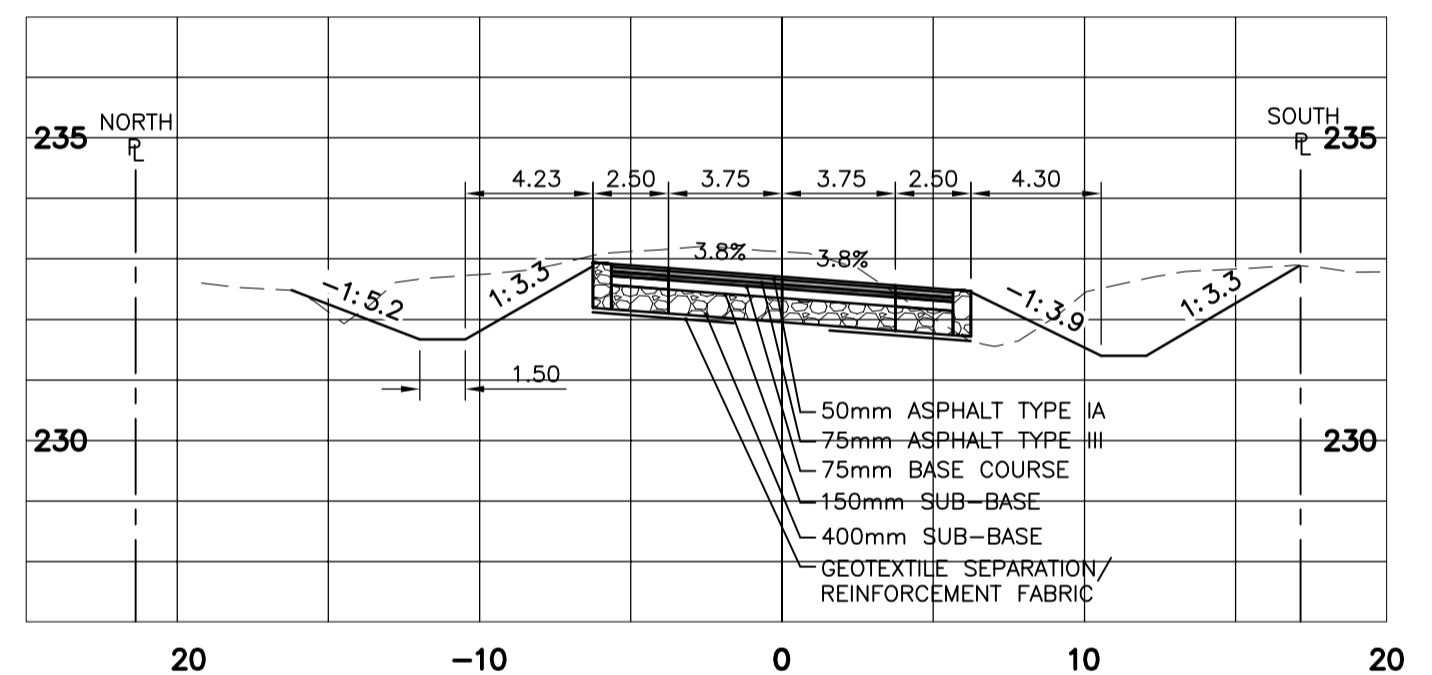
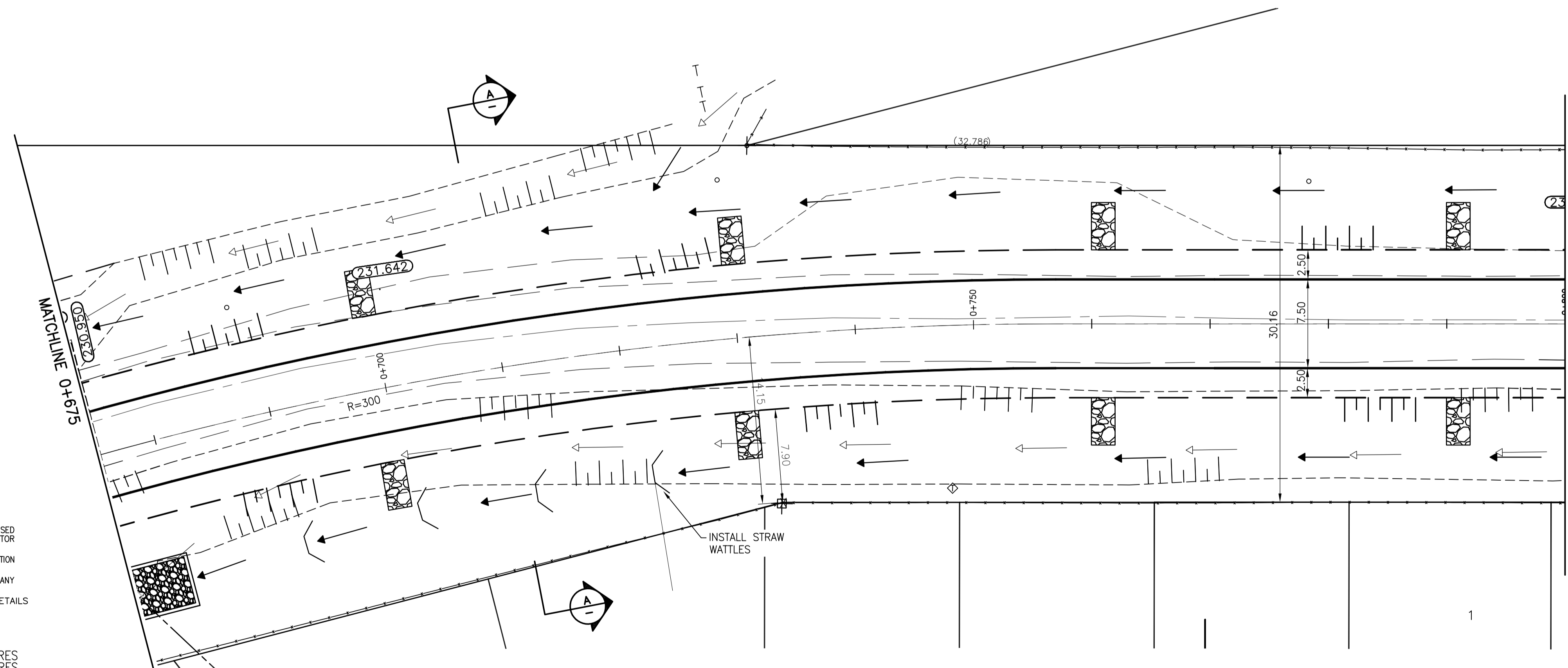
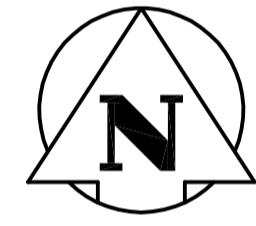
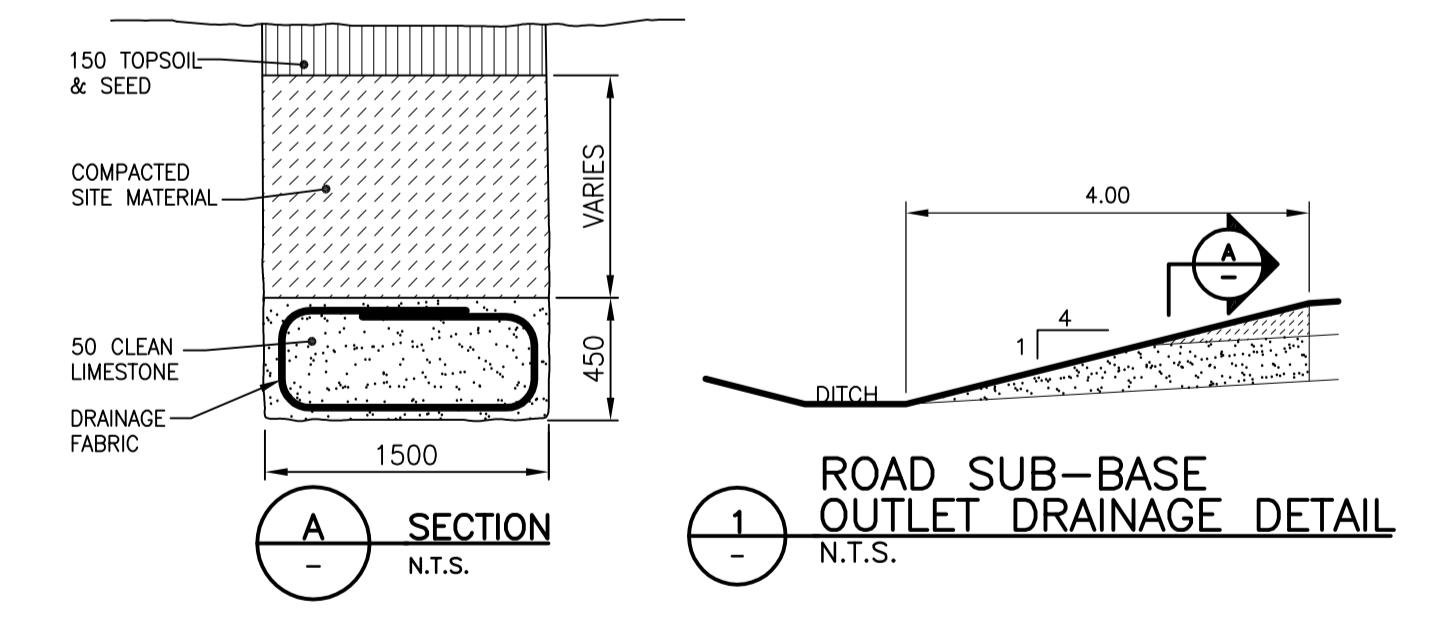


GUNN ROAD



SECTION AT STA 0+710
1:250H 1:125V



ROAD SUB-BASE OUTLET DRAINAGE DETAIL
N.T.S.

WARNING

IF POWER EQUIPMENT OR EXPLOSIVES ARE TO BE USED FOR EXCAVATION ON THIS PROJECT THE CONTRACTOR MUST:
1) NOTIFY THE GAS COMPANY OF THE PROPOSED LOCATION OF EXCAVATION.
2) TAKE PRECAUTION TO AVOID DAMAGE TO GAS COMPANY INSTALLATIONS.
SEE PROVINCIAL REGULATION 140/92 FOR DETAILS

METRIC

WHOLE NUMBERS INDICATE MILLIMETRES
DECIMALIZED NUMBERS INDICATE METRES

150 WWS	150 WM	150 WWS	150 WM	150 WWS	150 WM	150 WWS	150 WM
HYDRANT	WATERMAIN	HYDRANT	WATERMAIN	HYDRANT	WATERMAIN	HYDRANT	WATERMAIN
VALVE	VALVE	VALVE	VALVE	VALVE	VALVE	VALVE	VALVE
LAND DRAINAGE SEWER	LAND DRAINAGE SEWER	LAND DRAINAGE SEWER	LAND DRAINAGE SEWER	LAND DRAINAGE SEWER	LAND DRAINAGE SEWER	LAND DRAINAGE SEWER	LAND DRAINAGE SEWER
WASTE WATER SEWER	WASTE WATER SEWER	WASTE WATER SEWER	WASTE WATER SEWER	WASTE WATER SEWER	WASTE WATER SEWER	WASTE WATER SEWER	WASTE WATER SEWER
MANHOLE	MANHOLE	MANHOLE	MANHOLE	MANHOLE	MANHOLE	MANHOLE	MANHOLE
CATCH BASIN	CATCH BASIN	CATCH BASIN	CATCH BASIN	CATCH BASIN	CATCH BASIN	CATCH BASIN	CATCH BASIN
CURB INLET	CURB INLET	CURB INLET	CURB INLET	CURB INLET	CURB INLET	CURB INLET	CURB INLET
JUNCTIONS	JUNCTIONS	JUNCTIONS	JUNCTIONS	JUNCTIONS	JUNCTIONS	JUNCTIONS	JUNCTIONS
CULVERT	CULVERT	CULVERT	CULVERT	CULVERT	CULVERT	CULVERT	CULVERT
GAS	GAS	GAS	GAS	GAS	GAS	GAS	GAS
LEGEND-PLAN	LEGEND-PLAN	LEGEND-PLAN	LEGEND-PLAN	LEGEND-PLAN	LEGEND-PLAN	LEGEND-PLAN	LEGEND-PLAN
PROPOSED	PROPOSED	PROPOSED	PROPOSED	PROPOSED	PROPOSED	PROPOSED	PROPOSED
EXISTING	EXISTING	EXISTING	EXISTING	EXISTING	EXISTING	EXISTING	EXISTING
LEGEND-PLAN	LEGEND-PLAN	LEGEND-PLAN	LEGEND-PLAN	LEGEND-PLAN	LEGEND-PLAN	LEGEND-PLAN	LEGEND-PLAN
PROPOSED	PROPOSED	PROPOSED	PROPOSED	PROPOSED	PROPOSED	PROPOSED	PROPOSED
EXISTING	EXISTING	EXISTING	EXISTING	EXISTING	EXISTING	EXISTING	EXISTING
LEGEND-PROFILE	LEGEND-PROFILE	LEGEND-PROFILE	LEGEND-PROFILE	LEGEND-PROFILE	LEGEND-PROFILE	LEGEND-PROFILE	LEGEND-PROFILE
PROPOSED	PROPOSED	PROPOSED	PROPOSED	PROPOSED	PROPOSED	PROPOSED	PROPOSED
EXISTING	EXISTING	EXISTING	EXISTING	EXISTING	EXISTING	EXISTING	EXISTING

LOCATION APPROVED UNDERGROUND STRUCTURES
SUPV. U/G STRUCTURES COMMITTEE DATE
NOTE:
LOCATION OF UNDERGROUND STRUCTURES AS SHOWN ARE BASED ON THE BEST INFORMATION AVAILABLE BUT NO GUARANTEE IS GIVEN THAT ALL EXISTING UTILITIES ARE SHOWN THAT THE GIVEN LOCATIONS ARE EXACT. CONFIRMATION OF EXISTENCE AND EXACT LOCATION OF ALL SERVICES MUST BE OBTAINED FROM THE INDIVIDUAL UTILITIES BEFORE PROCEEDING WITH CONSTRUCTION.

B.M. ELEV.	NO.	REVISIONS	DATE	BY
	0	ISSUED FOR TENDER	10.03.25	W.K.B.

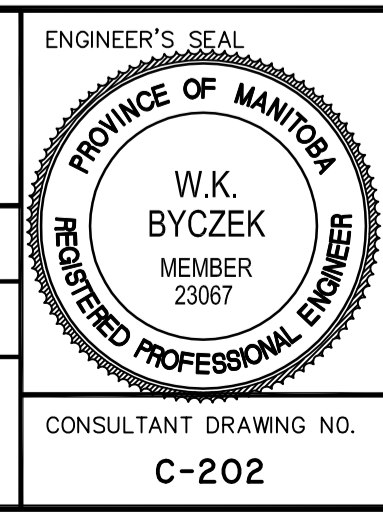
Stantec Consulting Ltd.
905 Waverley Street, Winnipeg, Manitoba
Tel 204-489-5900 Fax 204-453-9012

DESIGNED BY: W.K.B. CHECKED BY: V.M.M.
DRAWN BY: R.V. APPROVED BY: W.K.B.

HOR. SCALE: 1:250
VERTICAL: 1:10

RELEASED FOR CONSTRUCTION: DATE

CONSULTANT DRAWING NO. C-202



THE CITY OF WINNIPEG
PUBLIC WORKS DEPARTMENT
ENGINEERING DIVISION

GUNN ROAD
PLESSIS ROAD TO REDONDA STREET
STA. 0+675 TO STA. 0+800
ROAD RECONSTRUCTION

SHEET 2 OF 29
CAD FILE DRAWING NUMBER 05170c-201-726.dwg
CITY DRAWING NUMBER P-3318-02