

WARNING
 IF POWER EQUIPMENT OR EXPLOSIVES ARE TO BE USED FOR EXCAVATION ON THIS PROJECT THE CONTRACTOR MUST:
 1) NOTIFY THE GAS COMPANY OF THE PROPOSED LOCATION OF EXCAVATION.
 2) TAKE PRECAUTION TO AVOID DAMAGE TO GAS COMPANY INSTALLATIONS.
 SEE PROVINCIAL REGULATION 140/92 FOR DETAILS

METRIC
 WHOLE NUMBERS INDICATE MILLIMETRES
 DECIMALIZED NUMBERS INDICATE METRES

150 WWS	WATERMAIN	150 WWS	HYDRO	WATERMAIN	150 WWS	WATERMAIN	150 WWS
⊕	HYDRANT	⊕	M.T.S.	⊕	HYDRANT, VALVE	⊕	HYDRANT, VALVE
⊗	VALVE	⊗	CONCRETE	⊗	LAND DRAINAGE SEWER	⊗	LAND DRAINAGE SEWER
— 300 LDS	LAND DRAINAGE SEWER	— 300 LDS	ASPHALT	— 250 WWS	WASTE WATER SEWER	— 250 WWS	WASTE WATER SEWER
— 250 WWS	WASTE WATER SEWER	— 250 WWS	SIDEWALK	⊗	PROPERTY LINE	⊗	PROPERTY LINE
○	MANHOLE	○	PROPERTY LINE	⊗	NORTH OR WEST GUTTER	⊗	NORTH OR WEST GUTTER
□	CATCH BASIN	□	SURVEY BAR	⊗	SOUTH OR EAST GUTTER	⊗	SOUTH OR EAST GUTTER
▽	CURB INLET	▽	DITCH	⊗	NORTH OR WEST DITCH	⊗	NORTH OR WEST DITCH
+	JUNCTIONS	+	ELEVATION	⊗	SOUTH OR EAST DITCH	⊗	SOUTH OR EAST DITCH
—	CULVERT	—	SIDEWALK RAMP	⊗	NORTH OR WEST DITCH	⊗	NORTH OR WEST DITCH
—	GAS	—	HYDRO POLE	⊗	SOUTH OR EAST DITCH	⊗	SOUTH OR EAST DITCH
—	EXISTING	—	PROPOSED	—	EXISTING	—	PROPOSED

LOCATION APPROVED UNDERGROUND STRUCTURES
 SUPV. U/G STRUCTURES COMMITTEE DATE
 NOTE:
 LOCATION OF UNDERGROUND STRUCTURES AS SHOWN ARE BASED ON THE BEST INFORMATION AVAILABLE BUT NO GUARANTEE IS GIVEN THAT ALL EXISTING UTILITIES ARE SHOWN OR THAT THE GIVEN LOCATIONS ARE EXACT. CONFIRMATION OF EXISTENCE AND EXACT LOCATION OF ALL SERVICES MUST BE OBTAINED FROM THE INDIVIDUAL UTILITIES BEFORE PROCEEDING WITH CONSTRUCTION.

B.M. ELEV.	NO.	REVISIONS	DATE	BY
	0	ISSUED FOR TENDER	10.03.25	W.K.B.

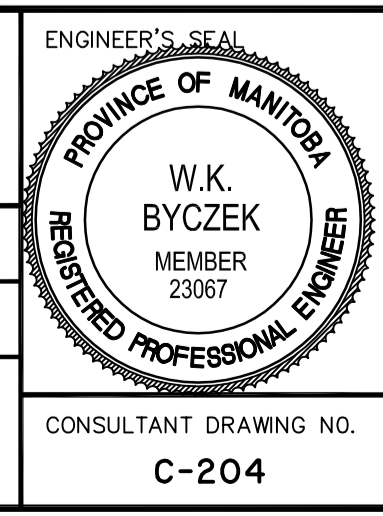
Stantec Consulting Ltd.
 905 Waverley Street, Winnipeg, Manitoba
 Tel 204-489-5900 Fax 204-453-9012

DESIGNED BY: W.K.B. CHECKED BY: V.M.M.
 DRAWN BY: R.V. APPROVED BY: W.K.B.

HOR. SCALE: 1:250
 VERTICAL: 1:10

RELEASED FOR CONSTRUCTION: DATE

CONSULTANT DRAWING NO. C-204



THE CITY OF WINNIPEG
 PUBLIC WORKS DEPARTMENT
 ENGINEERING DIVISION

GUNN ROAD
 PLESSIS ROAD TO REDONDA STREET
 STA. 0+925 TO STA. 1+050
 ROAD RECONSTRUCTION

SHEET 4 OF 29
 CAD FILE DRAWING NUMBER 05170c-201-726.dwg
 CITY DRAWING NUMBER P-3318-04