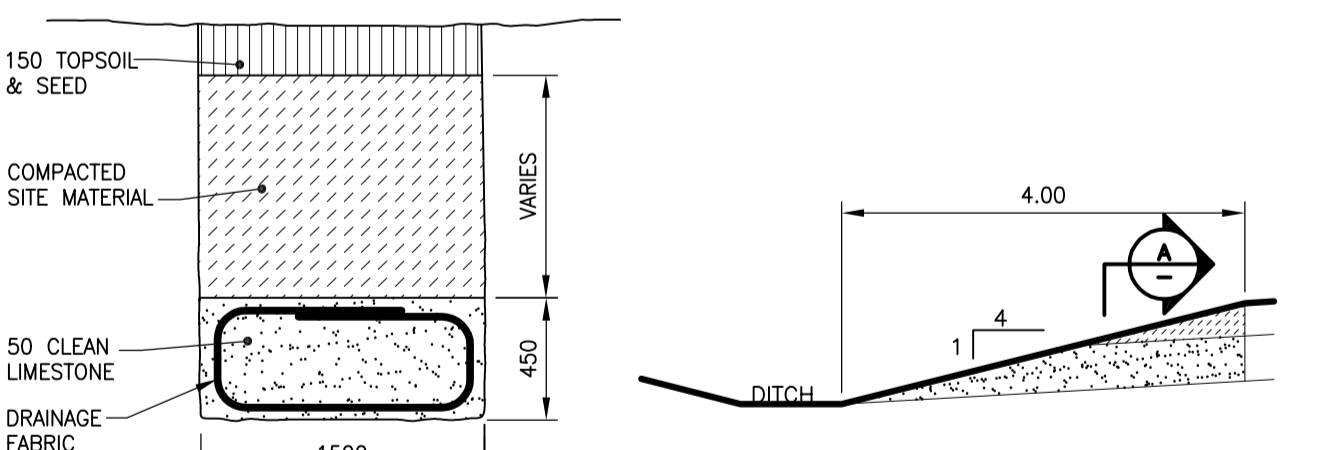


**A** SECTION AT STA 2+400  
1:250H 1:125V



**1** ROAD SUB-BASE OUTLET DRAINAGE DETAIL  
N.T.S.

**WARNING**

IF POWER EQUIPMENT OR EXPLOSIVES ARE TO BE USED FOR EXCAVATION ON THIS PROJECT THE CONTRACTOR MUST:  
 1) NOTIFY THE GAS COMPANY OF THE PROPOSED LOCATION OF EXCAVATION.  
 2) TAKE PRECAUTION TO AVOID DAMAGE TO GAS COMPANY INSTALLATIONS.  
 SEE PROVINCIAL REGULATION 140/92 FOR DETAILS

**METRIC**

WHOLE NUMBERS INDICATE MILLIMETRES  
 DECIMALIZED NUMBERS INDICATE METRES

150 W.M.	WATERMAIN	150 W.M.	HYDRO	WATERMAIN	150 W.M.	WATERMAIN	150 W.M.
○	HYDRANT	+	M.T.S.	+	+	HYDRANT, VALVE	+
○	VALVE	○	CONCRETE	○	○	LAND DRAINAGE SEWER	○
○	LAND DRAINAGE SEWER	○	ASPHALT	○	○	WASTE WATER SEWER	○
○	WASTE WATER SEWER	○	SIDEWALK	○	○	PROPERTY LINE	○
○	MANHOLE	○	PROPERTY LINE	○	○	SURVEY BAR	○
○	CATCH BASIN	○	SURVEY BAR	○	○	DITCH	○
○	CURB INLET	○	DITCH	○	○	ELEVATION	○
○	JUNCTIONS	○	ELEVATION	○	○	SIDEWALK RAMP	○
○	CULVERT	○	SIDEWALK RAMP	○	○	NORTH OR WEST GUTTER	○
○	GAS	○	NORTH OR WEST GUTTER	○	○	SOUTH OR EAST GUTTER	○
○	LEGEND-PLAN	○	SOUTH OR EAST GUTTER	○	○	NORTH OR WEST DITCH	○
○	PROPOSED	○	NORTH OR WEST DITCH	○	○	SOUTH OR EAST DITCH	○
○	EXISTING	○	SOUTH OR EAST DITCH	○	○	LEGEND-PROFILE	○
○	PROPOSED	○	LEGEND-PLAN	○	○	PROPOSED	○
○	EXISTING	○	PROPOSED	○	○	EXISTING	○

**LOCATION APPROVED UNDERGROUND STRUCTURES**  
 SUPV. U/G STRUCTURES COMMITTEE DATE  
 NOTE:  
 LOCATION OF UNDERGROUND STRUCTURES AS SHOWN ARE BASED ON THE BEST INFORMATION AVAILABLE BUT NO GUARANTEE IS GIVEN THAT ALL EXISTING UTILITIES ARE SHOWN OR THAT THE GIVEN LOCATIONS ARE EXACT. CONFIRMATION OF EXISTENCE AND EXACT LOCATION OF ALL SERVICES MUST BE OBTAINED FROM THE INDIVIDUAL UTILITIES BEFORE PROCEEDING WITH CONSTRUCTION.

B.M. ELEV.	NO.	REVISIONS	DATE	BY
	0	ISSUED FOR TENDER	10.03.25	W.K.B.

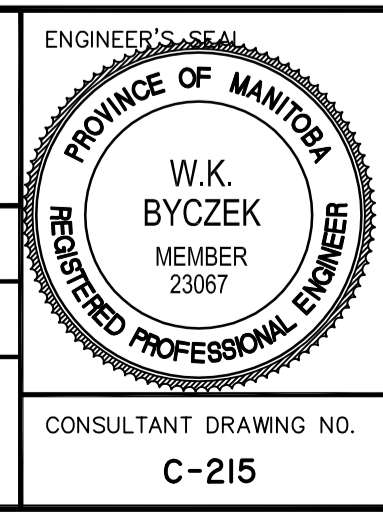
**Stantec Consulting Ltd.**  
 905 Waverley Street, Winnipeg, Manitoba  
 Tel 204-489-5900 Fax 204-453-9012

DESIGNED BY: W.K.B. CHECKED BY: V.M.M.  
 DRAWN BY: R.V. APPROVED BY: W.K.B.

HOR. SCALE: 1:250  
 VERTICAL: 1:10

RELEASED FOR CONSTRUCTION: DATE

CONSULTANT DRAWING NO. C-215



**THE CITY OF WINNIPEG**  
 PUBLIC WORKS DEPARTMENT  
 ENGINEERING DIVISION

**GUNN ROAD**  
 PLESSIS ROAD TO REDONDA STREET  
 STA. 2+300 TO STA. 2+425  
 ROAD RECONSTRUCTION

SHEET 15 OF 29  
 CAD FILE DRAWING NUMBER 05170c-210-726.dwg  
 CITY DRAWING NUMBER P-3318-15

V:\1137\winnipeg\113705170\drawing\A02\_design\sheet\plan\A02\05170c-210-726.dwg  
 2010-03-25 02:12PM By: tgal