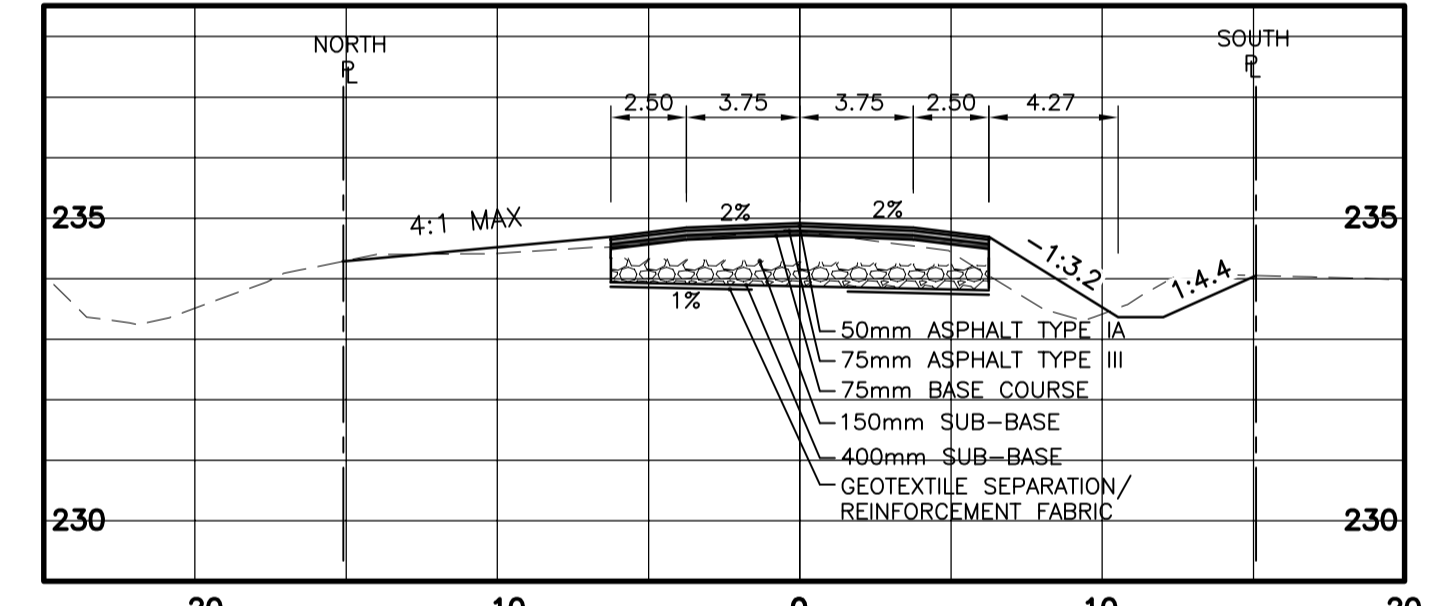
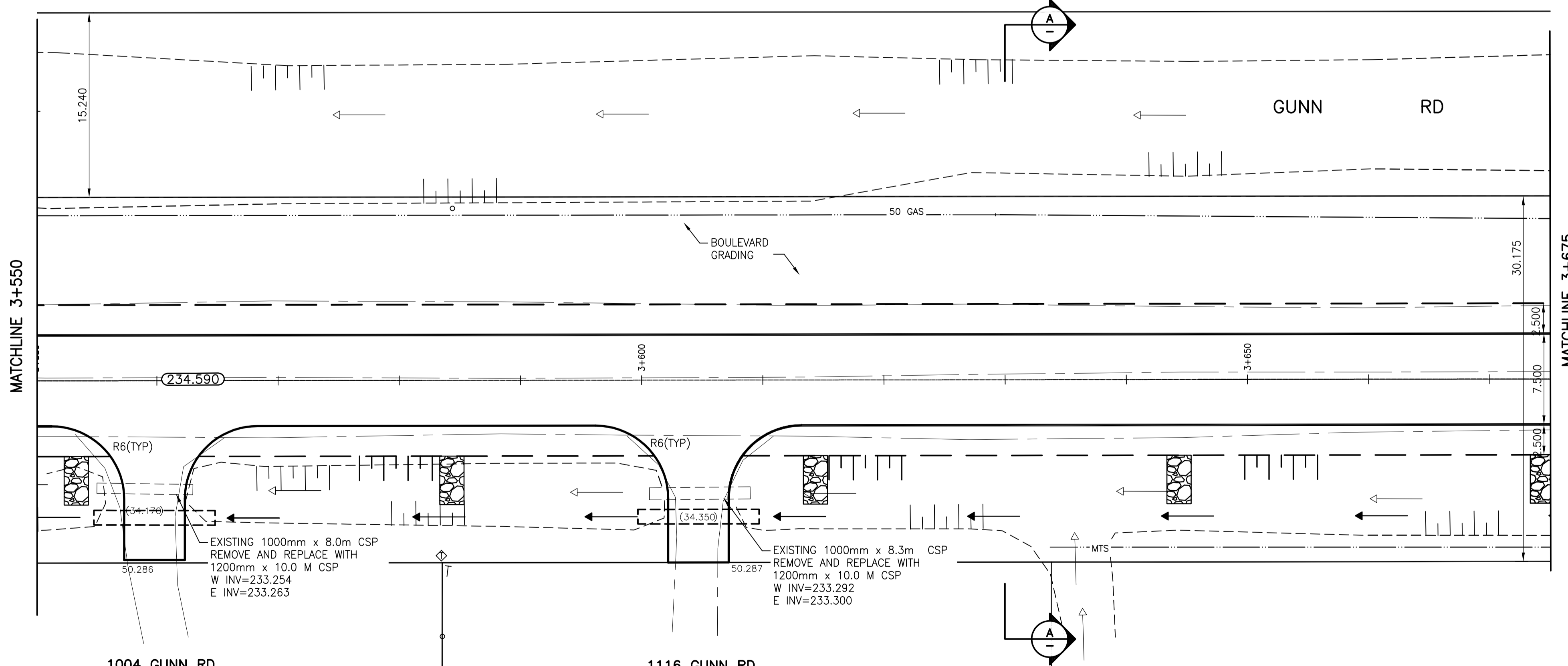
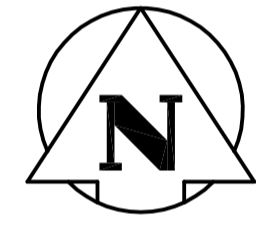
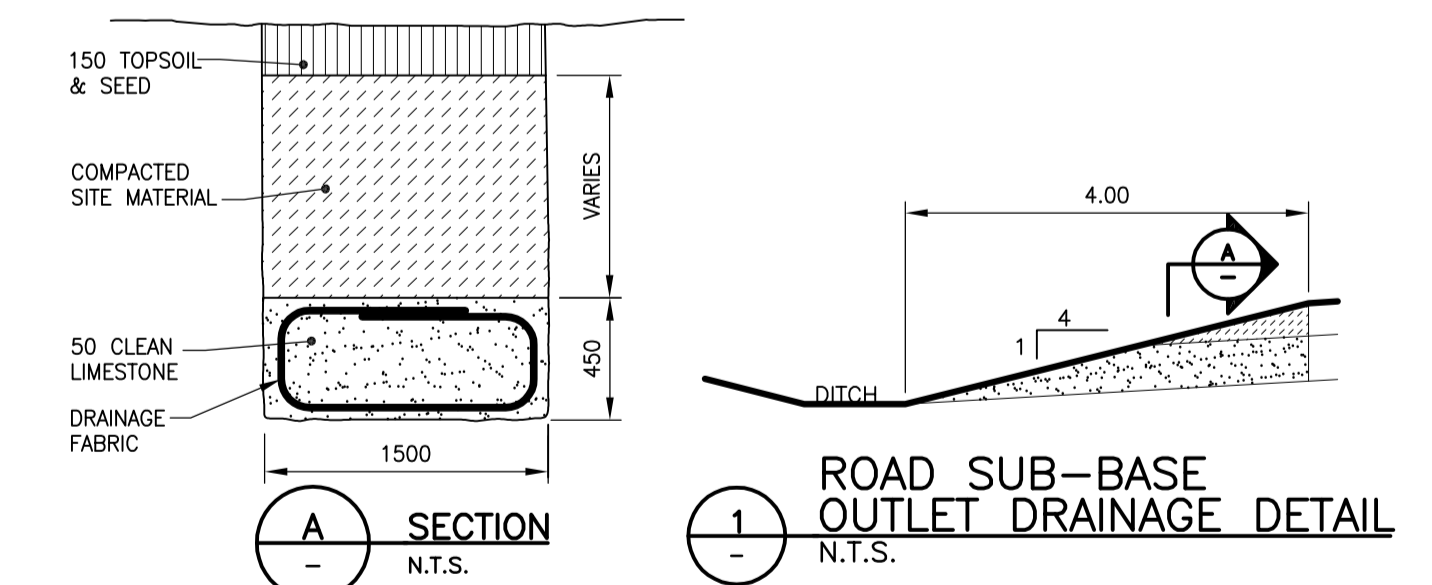


GUNN ROAD



SECTION AT STA 3+630
1:250H 1:125V



ROAD SUB-BASE OUTLET DRAINAGE DETAIL
N.T.S.

WARNING

IF POWER EQUIPMENT OR EXPLOSIVES ARE TO BE USED FOR EXCAVATION ON THIS PROJECT THE CONTRACTOR MUST:
1) NOTIFY THE GAS COMPANY OF THE PROPOSED LOCATION OF EXCAVATION.
2) TAKE PRECAUTION TO AVOID DAMAGE TO GAS COMPANY INSTALLATIONS.
SEE PROVINCIAL REGULATION 140/92 FOR DETAILS

METRIC

WHOLE NUMBERS INDICATE MILLIMETRES
DECIMALIZED NUMBERS INDICATE METRES

150 WM	WATERMAIN	150 WM	HYDRO	150 WM	WATERMAIN	150 WM
⊕	HYDRANT	⊕	M.T.S.	⊕	HYDRANT, VALVE	⊕
⊗	VALVE	⊗	CONCRETE	⊗	LAND DRAINAGE SEWER	⊗
—○—	LAND DRAINAGE SEWER	—○—	ASPHALT	—○—	WASTE WATER SEWER	—○—
—○—	WASTE WATER SEWER	—○—	SIDEWALK	—○—	PROPERTY LINE	—○—
○	MANHOLE	○	PROPERTY LINE	○	NORTH OR WEST GUTTER	○
□	CATCH BASIN	□	SURVEY BAR	□	SOUTH OR EAST GUTTER	□
▽	CURB INLET	▽	DITCH	▽	NORTH OR WEST DITCH	▽
+	JUNCTIONS	+	ELEVATION	+	SOUTH OR EAST DITCH	+
—○—	CULVERT	—○—	SIDEWALK RAMP	—○—	NORTH OR WEST DITCH	—○—
—○—	GAS	—○—		—○—	SOUTH OR EAST DITCH	—○—
---	EXISTING	---	LEGEND-PLAN	---	LEGEND-PROFILE	---
---	PROPOSED	---	LEGEND-PLAN	---	LEGEND-PROFILE	---

LOCATION APPROVED UNDERGROUND STRUCTURES
SUPV. U/G STRUCTURES COMMITTEE DATE
NOTE:
LOCATION OF UNDERGROUND STRUCTURES AS SHOWN ARE BASED ON THE BEST INFORMATION AVAILABLE BUT NO GUARANTEE IS GIVEN THAT ALL EXISTING UTILITIES ARE SHOWN OR THAT THE GIVEN LOCATIONS ARE EXACT. CONFIRMATION OF EXISTENCE AND EXACT LOCATION OF ALL SERVICES MUST BE OBTAINED FROM THE INDIVIDUAL UTILITIES BEFORE PROCEEDING WITH CONSTRUCTION.

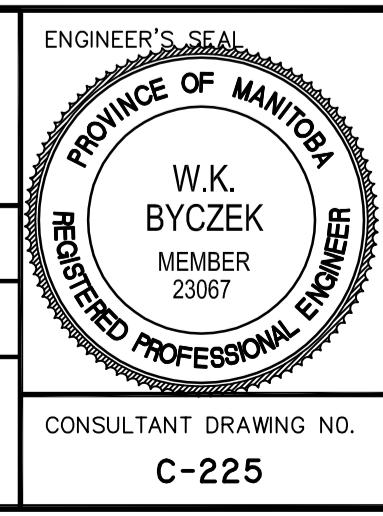
B.M. ELEV.	NO.	REVISIONS	DATE	BY
	0	ISSUED FOR TENDER	10.03.25	W.K.B.

Stantec Consulting Ltd.
905 Waverley Street, Winnipeg, Manitoba
Tel 204-489-5900 Fax 204-453-9012

DESIGNED BY: W.K.B. CHECKED BY: V.M.M.
DRAWN BY: R.V. APPROVED BY: W.K.B.

HOR. SCALE: 1:250
VERTICAL: 1:10

RELEASED FOR CONSTRUCTION: DATE



THE CITY OF WINNIPEG
PUBLIC WORKS DEPARTMENT
ENGINEERING DIVISION

GUNN ROAD
PLESSIS ROAD TO REDONDA STREET
STA. 3+550 TO STA. 3+675
ROAD RECONSTRUCTION

SHEET 25 OF 29
CAD FILE DRAWING NUMBER 05170c-220-726.dwg
CITY DRAWING NUMBER P-3318-25

CONSULTANT DRAWING NO. C-225