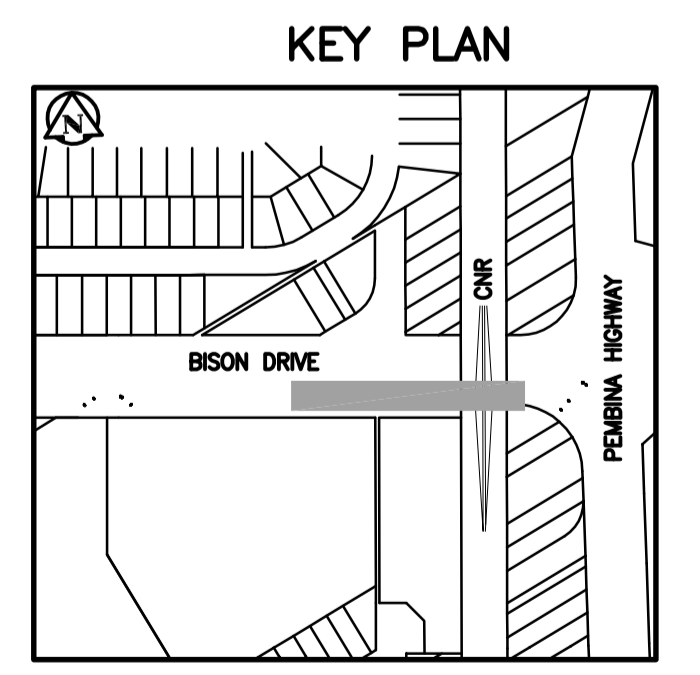
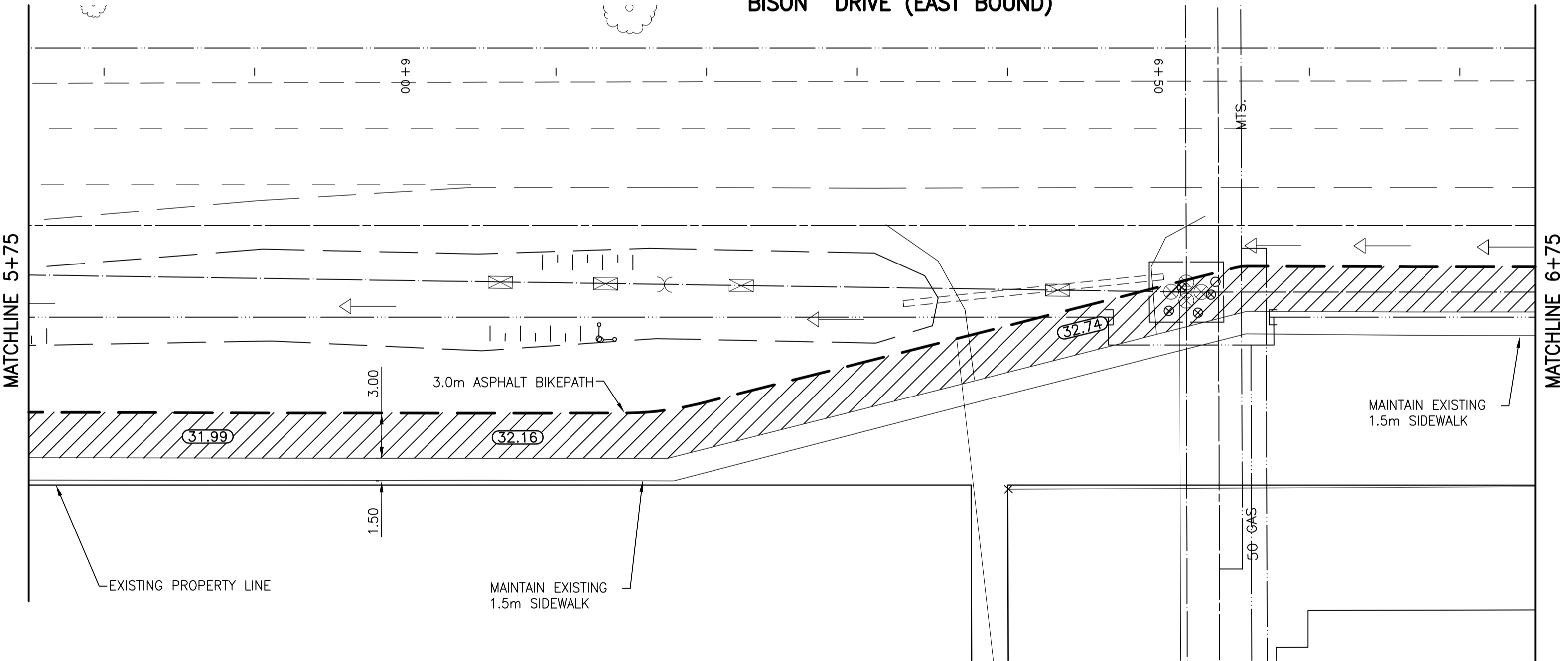


BISON DRIVE (EAST BOUND)



WARNING

IF POWER EQUIPMENT OR EXPLOSIVES ARE TO BE USED FOR EXCAVATION ON THIS PROJECT THE CONTRACTOR MUST:
 1) NOTIFY THE GAS COMPANY OF THE PROPOSED LOCATION OF EXCAVATION.
 2) TAKE PRECAUTION TO AVOID DAMAGE TO GAS COMPANY INSTALLATIONS.
 SEE PROVINCIAL REGULATION 140/92 FOR DETAILS

METRIC

WHOLE NUMBERS INDICATE MILLIMETRES
 DECIMALIZED NUMBERS INDICATE METRES

APEGM
 Certificate of Authorization
 Stantec Consulting Ltd.
 No. 1301 Date: _____

EXISTING	LEGEND-PLAN	PROPOSED	EXISTING	LEGEND-PLAN	PROPOSED	EXISTING	LEGEND-PROFILE	PROPOSED
150 WM	WATERMAIN	150 WM	HYDRO	150 WM	WATERMAIN	150 WM	WATERMAIN	150 WM
HYDRANT	HYDRANT	HYDRANT	M.T.S.	M.T.S.	HYDRANT, VALVE	HYDRANT, VALVE	HYDRANT, VALVE	HYDRANT, VALVE
VALVE	VALVE	VALVE	CONCRETE	CONCRETE	LAND DRAINAGE SEWER	LAND DRAINAGE SEWER	LAND DRAINAGE SEWER	LAND DRAINAGE SEWER
300 LDS	LAND DRAINAGE SEWER	300 LDS	ASPHALT	ASPHALT	WASTE WATER SEWER	WASTE WATER SEWER	WASTE WATER SEWER	WASTE WATER SEWER
250 WWS	WASTE WATER SEWER	250 WWS	SIDEWALK	SIDEWALK	Q PROFILE	Q PROFILE	Q PROFILE	Q PROFILE
MANHOLE	MANHOLE	MANHOLE	PROPERTY LINE	PROPERTY LINE	NORTH OR WEST GUTTER	NORTH OR WEST GUTTER	NORTH OR WEST GUTTER	NORTH OR WEST GUTTER
CATCH BASIN	CATCH BASIN	CATCH BASIN	SURVEY BAR	SURVEY BAR	SOUTH OR EAST GUTTER	SOUTH OR EAST GUTTER	SOUTH OR EAST GUTTER	SOUTH OR EAST GUTTER
CURB INLET	CURB INLET	CURB INLET	DITCH	DITCH	NORTH OR WEST DITCH	NORTH OR WEST DITCH	NORTH OR WEST DITCH	NORTH OR WEST DITCH
JUNCTIONS	JUNCTIONS	JUNCTIONS	ELEVATION	ELEVATION	SOUTH OR EAST DITCH	SOUTH OR EAST DITCH	SOUTH OR EAST DITCH	SOUTH OR EAST DITCH
CULVERT	CULVERT	CULVERT	SIDEWALK RAMP	SIDEWALK RAMP	NORTH OR WEST DITCH	NORTH OR WEST DITCH	NORTH OR WEST DITCH	NORTH OR WEST DITCH
GAS	GAS	GAS	TREE	TREE	SOUTH OR EAST DITCH	SOUTH OR EAST DITCH	SOUTH OR EAST DITCH	SOUTH OR EAST DITCH
EXISTING	LEGEND-PLAN	PROPOSED	EXISTING	LEGEND-PLAN	PROPOSED	EXISTING	LEGEND-PROFILE	PROPOSED

LOCATION APPROVED UNDERGROUND STRUCTURES
 SUPV. U/G STRUCTURES COMMITTEE DATE _____
 NOTE:
 LOCATION OF UNDERGROUND STRUCTURES AS SHOWN ARE BASED ON THE BEST INFORMATION AVAILABLE BUT NO GUARANTEE IS GIVEN THAT ALL EXISTING UTILITIES ARE SHOWN OR THAT THE GIVEN LOCATIONS ARE EXACT. CONFIRMATION OF EXISTENCE AND EXACT LOCATION OF ALL SERVICES MUST BE OBTAINED FROM THE INDIVIDUAL UTILITIES BEFORE PROCEEDING WITH CONSTRUCTION.

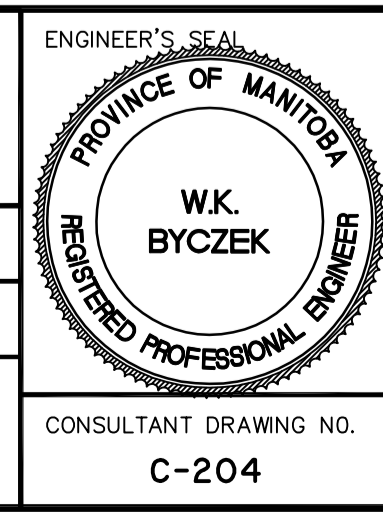
B.M. 76-022	ELEV. 233.014m		
1	ISSUED FOR TENDER	10.03.31	W.K.B.
0	ISSUED FOR REVIEW	10.03.31	W.K.B.
NO.	REVISIONS	DATE	BY

Stantec Consulting Ltd.
 905 Waverley Street, Winnipeg, Manitoba
 Tel 204-489-5900 Fax 204-453-9012

DESIGNED BY: W.K.B. CHECKED BY: B.K.
 DRAWN BY: R.V. APPROVED BY: W.K.B.

HOR. SCALE: 1:250
 VERTICAL: 1:10

RELEASED FOR CONSTRUCTION: _____
 DATE: 10.02.04



THE CITY OF WINNIPEG
 PUBLIC WORKS DEPARTMENT
 ENGINEERING DIVISION

2010 AT INFRASTRUCTURE STIMULUS PROGRAM

BISON DRIVE BIKEWAY
 BARNES STREET TO PEMBINA HIGHWAY
 STA 5+75 TO STA 6+75

SHEET 5 OF 6
 CAD FILE DRAWING NUMBER: 05260C-201.dwg
 CITY DRAWING NUMBER: W-374-05

CONSULTANT DRAWING NO. C-204

V:\1137\winn\113705260\winn\113705260.dwg (Contract) \05260C-201.dwg
 2010-03-31 08:39PM By: lgr