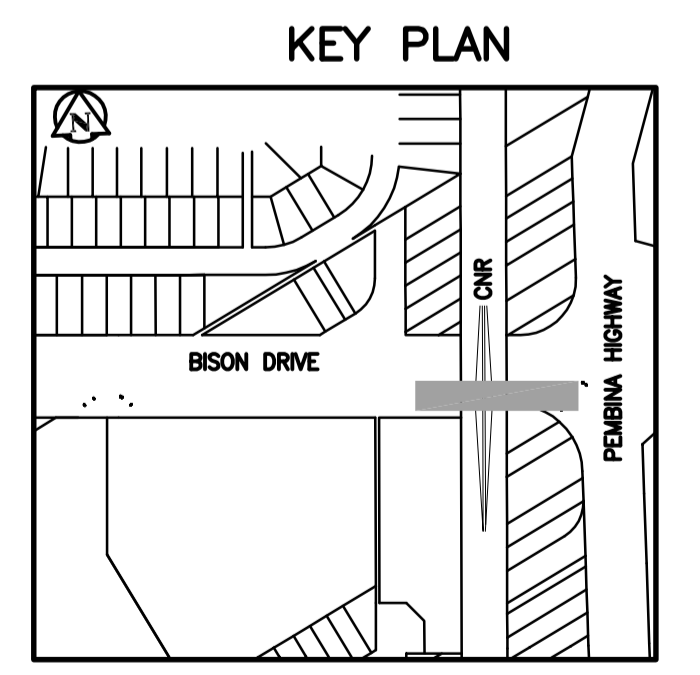
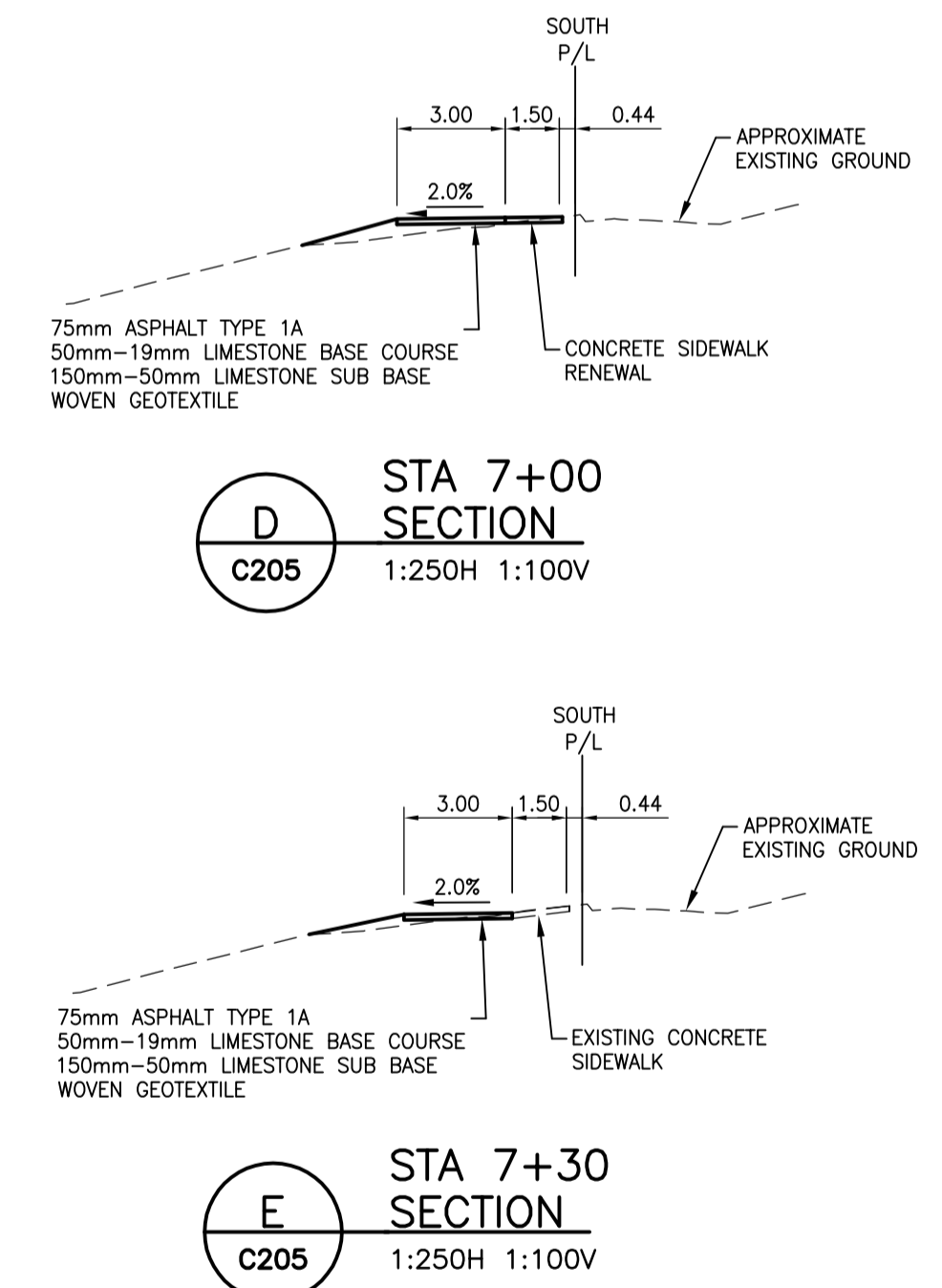
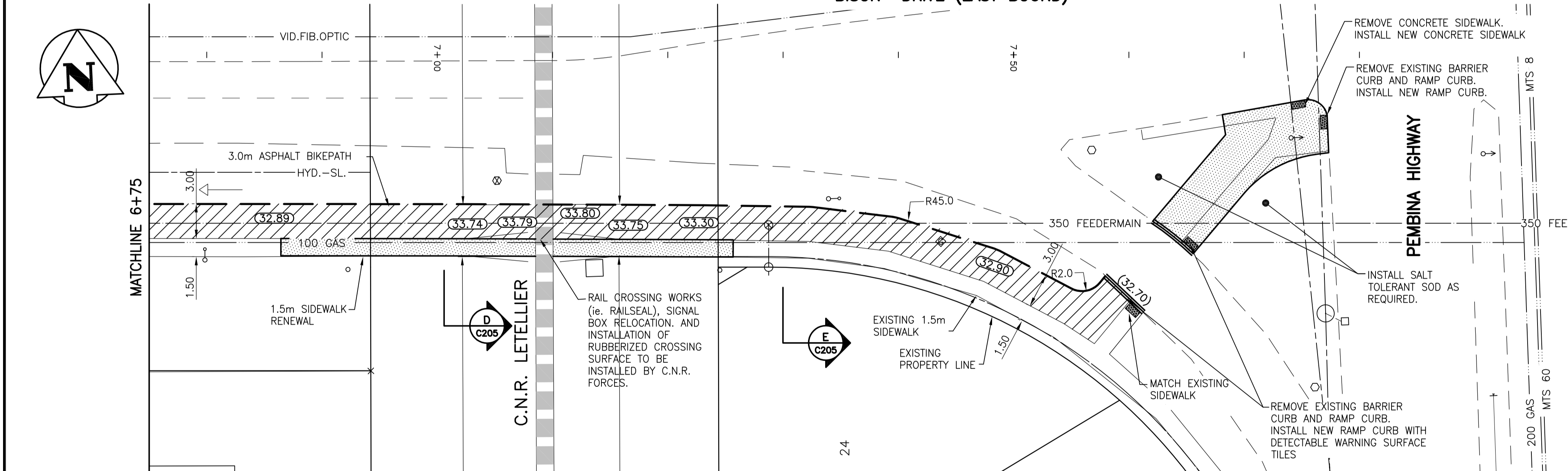


BISON DRIVE (EAST BOUND)



WARNING

IF POWER EQUIPMENT OR EXPLOSIVES ARE TO BE USED FOR EXCAVATION ON THIS PROJECT THE CONTRACTOR MUST:
 1) NOTIFY THE GAS COMPANY OF THE PROPOSED LOCATION OF EXCAVATION.
 2) TAKE PRECAUTION TO AVOID DAMAGE TO GAS COMPANY INSTALLATIONS.
 SEE PROVINCIAL REGULATION 140/92 FOR DETAILS

METRIC

WHOLE NUMBERS INDICATE MILLIMETRES
 DECIMALIZED NUMBERS INDICATE METRES

NOTE:
 FOR C.N.R. CALL 24/48 HOURS PRIOR TO CONSTRUCTION

150 WM	WATERMAIN	150 WM	HYDRO	150 WM	WATERMAIN	150 WM
300 LDS	LAND DRAINAGE SEWER	300 LDS	M.T.S.	300 LDS	HYDRANT, VALVE	300 LDS
250 WWS	WASTE WATER SEWER	250 WWS	CONCRETE	250 WWS	LAND DRAINAGE SEWER	250 WWS
ASPHALT	ASPHALT	ASPHALT	PROPERTY LINE	ASPHALT	WASTE WATER SEWER	ASPHALT
MANHOLE	MANHOLE	MANHOLE	SURVEY BAR	MANHOLE	WASTE WATER SEWER	MANHOLE
CATCH BASIN	CATCH BASIN	CATCH BASIN	DITCH	CATCH BASIN	WASTE WATER SEWER	CATCH BASIN
CURB INLET	CURB INLET	CURB INLET	ELEVATION	CURB INLET	WASTE WATER SEWER	CURB INLET
JUNCTIONS	JUNCTIONS	JUNCTIONS	SIDEWALK RAMP	JUNCTIONS	WASTE WATER SEWER	JUNCTIONS
CULVERT	CULVERT	CULVERT	TREE	CULVERT	WASTE WATER SEWER	CULVERT
GAS	GAS	GAS	LEGEND-PLAN	GAS	WASTE WATER SEWER	GAS
EXISTING	LEGEND-PLAN	PROPOSED	PROPOSED	EXISTING	LEGEND-PROFILE	PROPOSED

LOCATION APPROVED UNDERGROUND STRUCTURES

SUPV. U/G STRUCTURES COMMITTEE DATE
 NOTE:
 LOCATION OF UNDERGROUND STRUCTURES AS SHOWN ARE BASED ON THE BEST INFORMATION AVAILABLE BUT NO GUARANTEE IS GIVEN THAT ALL EXISTING UTILITIES ARE SHOWN OR THAT THE GIVEN LOCATIONS ARE EXACT. CONFIRMATION OF EXISTENCE AND EXACT LOCATION OF ALL SERVICES MUST BE OBTAINED FROM THE INDIVIDUAL UTILITIES BEFORE PROCEEDING WITH CONSTRUCTION.

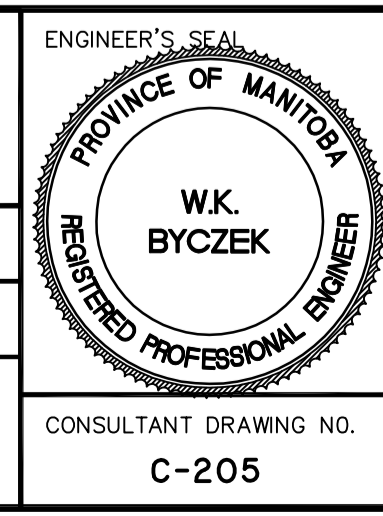
B.M. 76-022	ELEV. 233.014m		
1	ISSUED FOR TENDER	10.03.31	W.K.B.
0	ISSUED FOR REVIEW	10.03.31	W.K.B.
NO.	REVISIONS	DATE	BY

Stantec Consulting Ltd.
 905 Waverley Street, Winnipeg, Manitoba
 Tel 204-489-5900 Fax 204-453-9012

DESIGNED BY: W.K.B. CHECKED BY: B.K.
 DRAWN BY: R.V. APPROVED BY: W.K.B.

HOR. SCALE: 1:250
 VERTICAL: 1:10

RELEASED FOR CONSTRUCTION: DATE
 DATE 10.02.04



THE CITY OF WINNIPEG
 PUBLIC WORKS DEPARTMENT
 ENGINEERING DIVISION

2010 AT INFRASTRUCTURE STIMULUS PROGRAM
 BISON DRIVE BIKEWAY
 BARNES STREET TO PEMBINA HIGHWAY
 STA 6+75 TO STA 7+75

SHEET 6 OF 6
 CAD FILE DRAWING NUMBER 05260C-201.dwg
 CITY DRAWING NUMBER W-374-06

V:\1137\winn\11370260\drawing\A02_design\sheet\CONTRACT\05260C-201.dwg
 2010-03-31 03:38PM By: tgr